

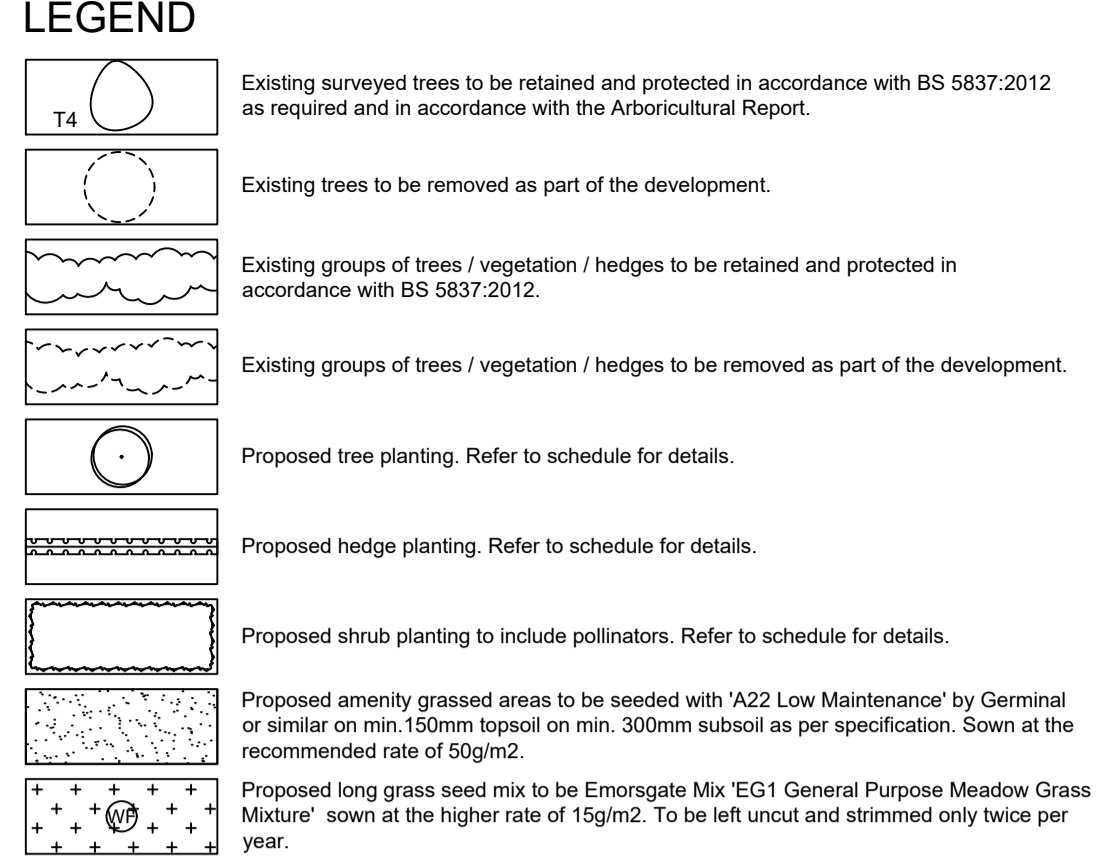
PLANTING SCHEDULE			
Number	Species	Girth	Specification
1	Acer campestre	14-16cm	RB Extra Heavy Standard
4	Betula pendula	14-16cm	RB Extra Heavy Standard
1	Malus sylvestris	14-16cm	RB Extra Heavy Standard
1	Prunus avium	14-16cm	RB Extra Heavy Standard
2	Sorbus aria	14-16cm	RB Extra Heavy Standard
2	Sorbus aucuparia	14-16cm	RB Extra Heavy Standard
2	Tilia europaea	14-16cm	RB Extra Heavy Standard
Total 14			

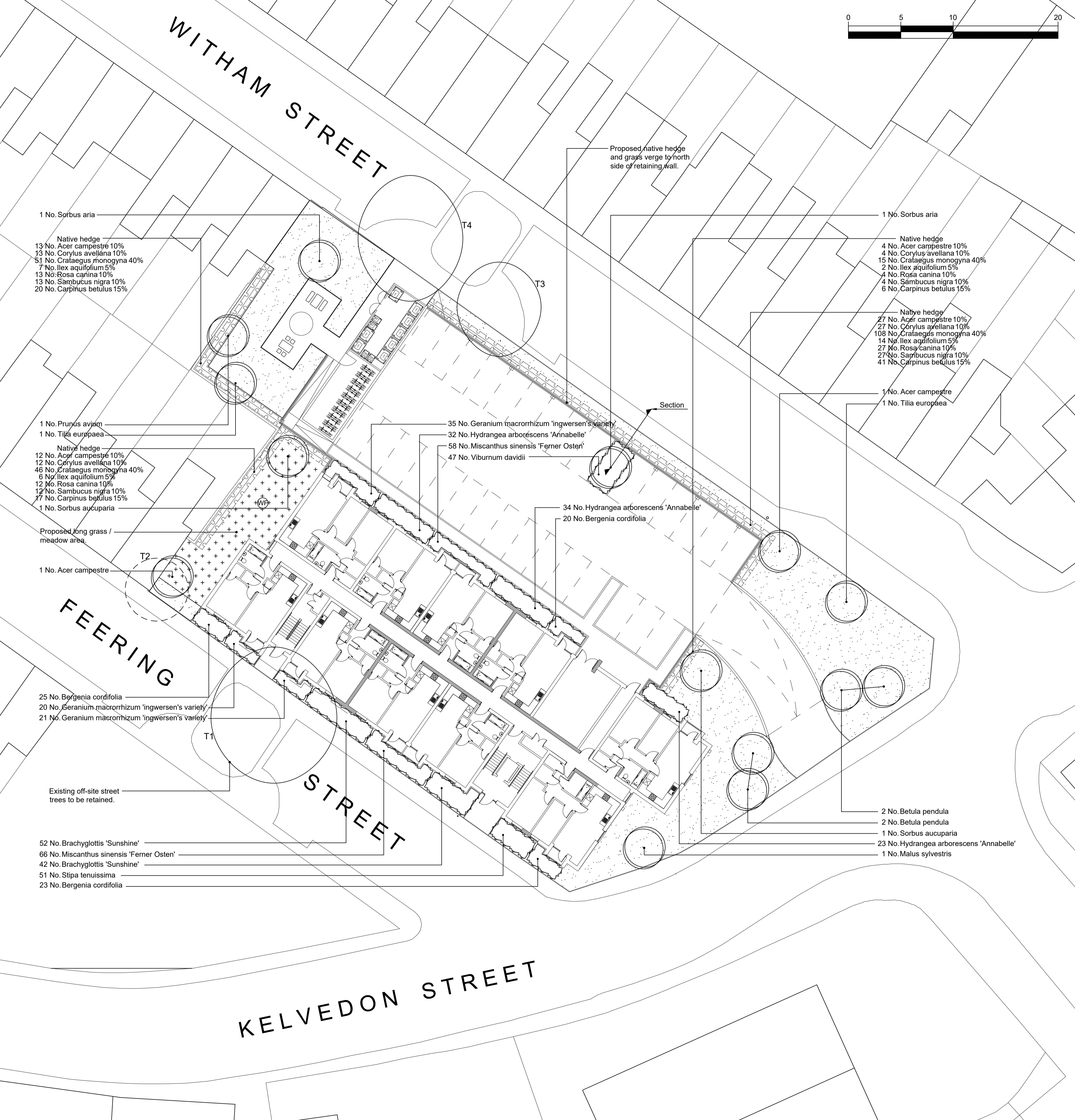
Shrubs			
Number	Species	Height	Pot Size/Specification/Density
68	Bergenia cordifolia	20-30cm	SL C 4/m <sup>2</sup>
94	Brachyglottis 'Sunshine'	40-60cm	SL C 4/m <sup>2</sup>
76	Geranium macrorrhizum 'Ingwersen's variety'	30-40cm	SL C 4/m <sup>2</sup>
69	Hydrangea arborescens 'Annabelle'	40-60cm	SL C 3/m <sup>2</sup>
124	Miscanthus sinensis 'Ferner Osten'	SL	C 6/m <sup>2</sup>
51	Stipa tenuissima	2L	C 6/m <sup>2</sup>
17	Viburnum davidii	40-60cm	SL C 4/m <sup>2</sup>
Total 549			

Native Hedge			
Number	Species	Height	Specification/Percentage Contribution
55	Acer campestre	60-80cm	15%
94	Carpinus betulus	60-80cm	15%
99	Corylus avellana	60-80cm	10%
220	Crataegus monogyna	40-60cm	40%
29	Ilex aquifolium	40-60cm	5%
69	Rosa canina	60-80cm	10%
56	Sambucus nigra	60-80cm	10%
Total 557			

Hedge planting to be established in double staggered rows, 300mm between rows, plants equally spaced with 6no plants per linear metre.



**Notes about birds breeding season and tree removal:**  
It is recommended that vegetation which needs to be removed is done prior to the bird breeding season [1st March to 31st August]. If this is not possible within this period, the vegetation removal should be carried out under the supervision of an Ecologist.  
If birds are found to be breeding in the vegetation which needs to be removed then vegetation removal in the area surrounding the nest must be delayed until the eggs have hatched and the young birds have left the nest.



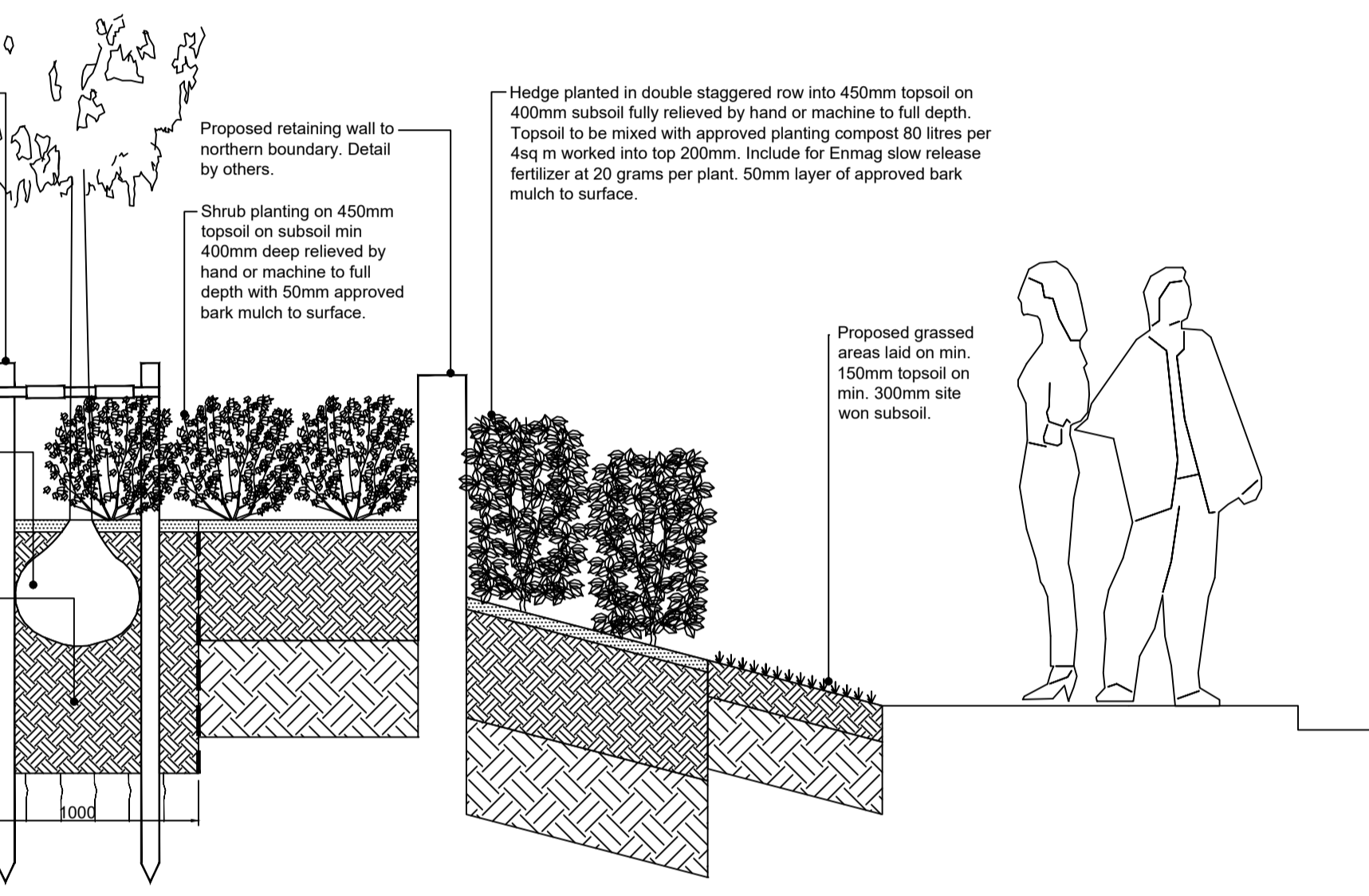
Tree planting to be double staked using 75mm diameter pointed softwood stakes treated with Tanalith E Class 4.0. Stakes to be driven into ground 1500mm below finished soil level and be 600mm above ground. Trees to be secured to stakes using adjustable rubber tree ties.

GreenBlue Urban ReRoot 1000 root barrier system within 6M of all service locations installed in compliance with manufacturers installation instructions.

GreenBlue Urban Root Rain urban irrigation system RRURB1.

1 x 1 x 1m tree pit backfilled firstly with site won subsoil [700mm] and then site won topsoil [300mm]. Topsoil to BS3852 thoroughly mixed with Melcourt Topgrow Planting Compost in ratio 2:1 as specified. Include for Enmag slow release fertiliser at 100gms per pit, and backfill in 150mm layers firming in before next layer is added. Break up bottom of pit 200mm deep and sides where root barrier is not installed.

Section through tree pit / shrub planting and boundary wall.  
Scale 1:25



**Planting Specification**

All work and materials shall be in accordance with current British Standards components and to Code of Practice.

**SITE CLEARANCE**  
a - Remove general builders rubble, litter and any stones greater than 75mm in size from the areas to be planted. Such materials are to be collected and taken to the Contractors tip or disposed of on site as directed.

**EARTHWORKS**  
**Planting Areas**  
a - Approved topsoil, both site won and imported, shall be led onto site and spread evenly on the approved formation to give a finished depth of 150mm for grassed areas, 450mm for shrub planted areas and 1000mm depth for tree pits. All topsoil to be placed on a minimum of 300mm depth of subsoil.  
b - Finished levels of topsoil in grassed areas to be 25mm above adjoining paving. Finished level of topsoil in shrub beds to be 50mm lower than adjacent edge to allow placing of bark mulch.  
c - Supply and spread approved fertiliser such as SAI Enmag or similar standard at the rate of 70g/m<sup>2</sup> to be worked into top 200mm.

**CULTIVATIONS AND PLANTING**  
**Planting Areas**  
a - Shrub beds shall be cultivated prior to planting to produce a medium tilth and all weeds, stones and other debris arising from this work are to be collected and removed from site.  
b - Spread approved tree and shrub planting compost over the planting beds at a rate of 20 litres/m<sup>2</sup> and work into the top 200mm.  
c - Shrubs to be staked in locations, numbers and demarcates shown in the planting schedule and on the soft landscape drawings. Shrubs to be placed to achieve an even spacing and matching of shapes. All shrubs are to be planted at the depth at which they have previously been growing, allowing for soil settlement after planting.  
d - Surfaces of shrub planting areas shall be left clean and neat with a raked surface between the planting during and on completion of planting.  
e - Immediately after planting all contaminated plants shall be watered with 5 litres of water per plant.  
f - All grass edges to be cut vertically with an edging iron to a depth of 100mm. Resultant edges to be clean and straight or an even smooth radius. Edges to be left neat and tidy with ground on shrub side meeting cut face at an even gradient. All cuttings to be removed from site.  
g - A 50mm layer of mature conifer bark to be spread over planting areas and tops of tree pits, at least 75% of which shall exceed 60mm particle size and shall contain a minimum of wood particles, the bark is to be pest, disease and weed free.

**Tree Planting - Planting Pits**  
a - Excavate tree pits as follows:  
Standard / Feathered trees - 1000 x 1000 x 1000mm  
Semi-Mature trees - 1500 x 1500 x 1000  
b - Loosen base to a further depth of 200mm and scarify sides. Dispose of unsuitable excavated material off site to approved tip.  
c - Trees to be double staked with stakes positioned parallel to the adjacent kerb line or paving. Tree stakes to be pressure treated, minimum diameter 65mm and pointed at one end. Stakes to be driven into the pit before planting to a minimum depth of 300mm below the base of the pit.

**Minor Grading**  
a - Finished levels of amenity grass areas to be 25mm above adjoining paving or kerbs. Levels to be arranged to give gentle falls for drainage purposes.  
b - New areas to be marled in to adjoining solid areas.

**Final Cultivations**  
a - The surface for seeding should be 25mm deep and free from weeds and stones.  
b - Areas for seeding to have topsoil depths of min. 150mm apart from willow areas where seed should be sown directly onto subsoil.  
c - One month prior to sowing, areas shall be harrowed to a depth of 100mm followed by chain harrowing to a depth of 50mm to produce a fine tilth. Finished surfaces to be rolled with a Cambridge roller.  
d - All weeds, stones and other debris arising from this work shall be collected and removed from site to the Contractors tip.

**Sowing**  
**Grass Seed Mixes**  
a - 'Germinal Seeds Ref.' 'A22 Low Maintenance' sown at recommended rate of 50g/m<sup>2</sup> or similar approved.  
b - Emorgate Seeds Ref. 'EG1 General Purpose Meadow Grass Mixture' sown at higher rate of 15g/m<sup>2</sup>, or similar approved.

**Procedure**  
a - The Contractor shall purchase fresh grass seed each season throughout the contract period. The grass seed shall be made up of certified seeds under EEC regulations. The seed shall have a certified germination of not less than 10% and a certificate of purity of not less than 90%. Total weed seed and other crop seeds content shall not be more than 15. Seeds shall be obtained at least 21 days before sowing.  
b - The Contractor shall be required to submit certificates for all deliveries of grass seed stating the seed source, mature percentage, percentage purity and germination.

d - Trees to be planted in pit to a depth and orientation related to the original growing position in the nursery and backfilled with the excavated topsoil mixed with approved tree and shrub planting compost in the following amounts:-  
Feathered trees - 60 litres/tree  
Standard trees - 95 litres/tree  
Heavy standard trees - 120 litres/tree  
Semi-mature trees - 150 litres/tree  
e - Trees to be tied to the supporting stakes with adjustable reinforced rubber tree ties with solid rubber spacers positioned at an approved point suitable to the habit of the tree.  
f - Proposed trees within 3m distance from buildings or services, or within 2.5m of roads/parking areas are to have root barriers installed.  
g - Water to be applied to all trees and transplants on the same day as planting:-  
Feathered trees - 36 litres/tree  
Standard trees - 36 litres/tree  
Heavy Standard trees - 42 litres/tree  
Extra Heavy standard - 48 litres/tree

**Grass Seeding**  
a - Areas for seeding to have topsoil depths of min. 150mm apart from willow areas where seed should be sown directly onto subsoil.  
b - One month prior to sowing, areas shall be harrowed to a depth of 100mm followed by chain harrowing to a depth of 50mm to produce a fine tilth. Finished surfaces to be rolled with a Cambridge roller.  
c - All weeds, stones and other debris arising from this work shall be collected and removed from site to the Contractors tip.  
d - All grassed and broad-leaved plants which emerge between cultivations and seeding shall only be treated with an approved translocated herbicide before sowing.

**Watering**  
a - Contractor shall be entirely responsible for all watering necessitated by dry weather and it shall be undertaken by stationary rotary sprays.  
b - New areas to be marled in to adjoining solid areas.

**Completion**  
a - Grass areas shall be accepted as having reached practical completion only when germination has proved satisfactory and healthy weed free swards have been established.

**MAINTENANCE**  
**General**  
a - The Contractor shall be responsible for the maintenance of the planting and grassed areas for a 12 month period following the completion of the works and will be responsible for any defects due to faulty materials, including plant failures, or workmanship during this time.  
b - The Contractor shall carry out maintenance work at suitable intervals and in suitable weather conditions.  
c - 48 hours notice in writing shall be given before commencement of any maintenance operations. Failure to do so will result in no payment for any supposed work carried out.

**Grass Subsidence/Damage**  
a - Any subsidence of seeded or turfed areas below the specified levels shall be made good and re-seeded. These works shall be rectified at the Contractor's expense.  
b - The Contractor shall make good any damage caused by work personnel, plant or material whilst carrying out and maintaining the work on site.

**Watering**  
a - All planting shall be watered with a low pressure hose during dry spells, within the first year of growth only, at the following rates:-  
Feathered/standard trees - 36 litres/tree/visit  
Heavy standard trees - 42 litres/tree/visit  
Semi-mature trees - 48 litres/tree/visit  
Shrubs - 5 litres/plant/visit  
**Fertiliser**  
a - At the end of the establishment period, 30gms of slow release fertiliser to be applied around each plant. Allow 1 no. visit at end of Year 2  
**Grass Cutting**  
a - Areas sown with amenity mix:-  
16no. visits between April and October. Grass areas to be cut to a height of c.40mm. NB: in drought conditions adjust cutting heights to c.60mm. In very wet conditions, all operations involving grass cutting shall cease until conditions allow operations to continue without damaging the surfacing, levels and contours of the ground. Allow for sweeping clean of all paths and roads of grass cuttings at each mowing.  
**Final**  
a - IN ALL CASES all arisings are to be removed from site.  
**Planting**  
a - All plants and tree stakes loosened by planting operations, wind or frost shall be firmed in. Allow 1 no. visit per year.  
**Litter Collection**  
a - Whole site to be kept in a clean and tidy condition throughout the establishment period. Litter to be removed from site. Allow 20 no. visits per year.

**Defects Liability Period**  
a - Any trees, shrubs and grass found to be defective or missing for any reason before practical completion shall be replaced by the Contractor entirely at his own expense.  
b - Thereafter any failures within 12 months of the date of practical completion shall also be replaced to the original specification by the Contractor entirely at his own expense, in the next planting season.  
c - Thereafter any failures within the next 4 years shall also be replaced to the original specification in accordance with the planning conditions.

**Weed Control**  
a - Keep shrub beds and areas around trees free from annual and perennial weeds by hand weeding. All arisings to be removed from site. Allow 7 no. visits per year.  
b - Apply translocated herbicide to shrub beds using weed wiper. Allow 3 visits a year with dead weed growth removed after each visit.  
**Mulch**  
a - Bark mulch to be reinstated to original depths at the end of each growing season. Allow 1 no. visit per year.  
**Watering**  
a - All planting shall be watered with a low pressure hose during dry spells, within the first year of growth only, at the following rates:-  
Feathered/standard trees - 36 litres/tree/visit  
Heavy standard trees - 42 litres/tree/visit  
Semi-mature trees - 48 litres/tree/visit  
Shrubs - 5 litres/plant/visit

**Grass Seeding**  
a - Areas for seeding to have topsoil depths of min. 150mm apart from willow areas where seed should be sown directly onto subsoil.  
b - One month prior to sowing, areas shall be harrowed to a depth of 100mm followed by chain harrowing to a depth of 50mm to produce a fine tilth. Finished surfaces to be rolled with a Cambridge roller.  
c - All weeds, stones and other debris arising from this work shall be collected and removed from site to the Contractors tip.  
d - All grassed and broad-leaved plants which emerge between cultivations and seeding shall only be treated with an approved translocated herbicide before sowing.

**Watering**  
a - Contractor shall be entirely responsible for all watering necessitated by dry weather and it shall be undertaken by stationary rotary sprays.  
b - New areas to be marled in to adjoining solid areas.

**Completion**  
a - Grass areas shall be accepted as having reached practical completion only when germination has proved satisfactory and healthy weed free swards have been established.

**MAINTENANCE**  
**General**  
a - The Contractor shall be responsible for the maintenance of the planting and grassed areas for a 12 month period following the completion of the works and will be responsible for any defects due to faulty materials, including plant failures, or workmanship during this time.  
b - The Contractor shall carry out maintenance work at suitable intervals and in suitable weather conditions.  
c - 48 hours notice in writing shall be given before commencement of any maintenance operations. Failure to do so will result in no payment for any supposed work carried out.

**Grass Subsidence/Damage**  
a - Any subsidence of seeded or turfed areas below the specified levels shall be made good and re-seeded. These works shall be rectified at the Contractor's expense.  
b - The Contractor shall make good any damage caused by work personnel, plant or material whilst carrying out and maintaining the work on site.

**Watering**  
a - All planting shall be watered with a low pressure hose during dry spells, within the first year of growth only, at the following rates:-  
Feathered/standard trees - 36 litres/tree/visit  
Heavy standard trees - 42 litres/tree/visit  
Semi-mature trees - 48 litres/tree/visit  
Shrubs - 5 litres/plant/visit  
**Fertiliser**  
a - At the end of the establishment period, 30gms of slow release fertiliser to be applied around each plant. Allow 1 no. visit at end of Year 2  
**Grass Cutting**  
a - Areas sown with amenity mix:-  
16no. visits between April and October. Grass areas to be cut to a height of c.40mm. NB: in drought conditions adjust cutting heights to c.60mm. In very wet conditions, all operations involving grass cutting shall cease until conditions allow operations to continue without damaging the surfacing, levels and contours of the ground. Allow for sweeping clean of all paths and roads of grass cuttings at each mowing.  
**Final**  
a - IN ALL CASES all arisings are to be removed from site.  
**Planting**  
a - All plants and tree stakes loosened by planting operations, wind or frost shall be firmed in. Allow 1 no. visit per year.  
**Litter Collection**  
a - Whole site to be kept in a clean and tidy condition throughout the establishment period. Litter to be removed from site. Allow 20 no. visits per year.

REV.	DESCRIPTION	DATE	REV.	DESCRIPTION	DATE	REV.	DESCRIPTION	DATE
A	Wall added to cross section, grass seed mixes amended, hedge mix amended, shrub species amended as per LPA comments, LH/DP	28.01.25						

**IMPORTANT CDM / H&S NOTE**  
The designers would draw the reader's attention to key residual construction health and safety hazards that have not been eliminated from the designs shown on the drawings by the design process. These hazards are identified below:  
Working on or adjacent to the public highway.  
Working adjacent to water bodies during storm conditions.  
Working adjacent to changes in level.  
Any construction personnel including operatives intending to construct the designs shown on this drawing should ensure that they have been thoroughly briefed by the principle contractor on all health and safety matters and have sight of:  
1. The full designers and contractors hazard risk assessments and risk registers.  
2. The developed construction phase health and safety plan.  
3. The contractors construction method statements.

**PROJECT**  
Kelvedon Street, Newport  
**DRAWING TITLE**  
Soft Landscape Proposals

**SCALE (A1)**  
1:200

**DATE**  
Sept/24

**DRAWN**  
LH

**CHKD**  
DP

**DRAWING No.**  
1229.01 Rev A

**SCALE (A1)**  
1:200

**DATE**  
Sept/24

**DRAWN**  
LH

**CHKD**  
DP

**Note:** Do not scale this drawing. Use figured dimensions in all cases. Check all dimensions on site. Report any discrepancies to the landscape architecture before proceeding. This document is copyright and must not be used, amended or reproduced in any form without written consent from dp landscape architecture ltd.

**dp landscape architecture**  
Newcastle Upon Tyne  
T: 01464 773 861  
info@dpila.co.uk

**Cardiff / Caerdydd**  
T: 01446 773 861  
www.dplandscapearchitecture.co.uk