

56 Bridge Street – Waste Storage & Collection

Introduction

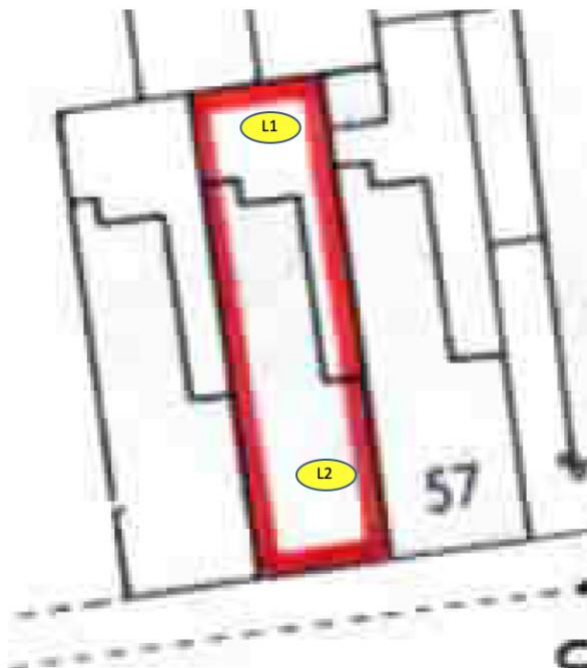
This document outlines the location of the waste and recycling storage for both the residential and commercial units within the proposed mixed-use development. And regarding the residential unit, it outlines the collection day process to be adhered to by the occupiers.

Storage Location

The proposed planning application is a mixed-use development. Section 3.9 of the Waste Storage and Collection guidance states: “In a mixed development, a strict separation of waste is required to ensure that commercial waste does not enter the domestic waste stream. Two refuse storage areas must be identified on site plans detailing this separation”

The proposed storage refuse storage areas are located on the below site plan.

- **(L1) Residential:** Recycling containers and wheelie bins will be stored in the rear garden
- **(L2) Commercial:** Commercial waste will be stored in the storage room provided within the commercial unit. Section 3.6 of the Waste Storage and Collection guidance states: “By law all industrial and commercial premises have a duty of care to ensure their waste is managed and disposed of correctly.” Please see proposed floor plan documents for specific location and size of storage room if required.



Collection Day Process

The below steps outline the steps required for the residential part of the mixed used development. Regarding the commercial part, section 3.6 of the Waste Storage and Collection guidance states: "By law all industrial and commercial premises have a duty of care to ensure their waste is managed and disposed of correctly."

On or before collection day, when waste is allowed to be positioned on the pavement, occupiers will move all recycling containers to the pavement, if it's also a general waste collection, they will move the wheelie bin to the pavement as well. Once items have been collected, the containers will be moved back to the storage location on the same day as collection.

Reference

<https://www.newport.gov.uk/documents/Planning-Documents/Supplementary-Planning-Guidance/2020/Waste-Storage-and-Collection-SPG-Adopted-Jan-2020.pdf>