





PROPOSED CHANGE OF USE FROM C3 to C6 SHORT-TERM LET

13 ASH COTTAGE, NEWPORT, NP18 1AG

Prepared by RDK Civil Engineering Limited



LONDON OFFICE: 30, CHILTERN ROAD, SM2 5RD | BRISTOL OFFICE: 1 FERNHILL COURT, ALMONDSBURY, BS32 4LX

INFO@RDKCIVILS.CO.UK | WWW.RDKCIVILS.CO.UK

020 38161818 | 079 85543471

This document is the property and copyright of RDK Civil Engineering Limited

Unless otherwise stated, all drawings, images, and diagrams contained within this document are not to scale. This document is the property and copyright of RDK Civil Engineering Limited

2.4. Site Photographs

Site Photographs

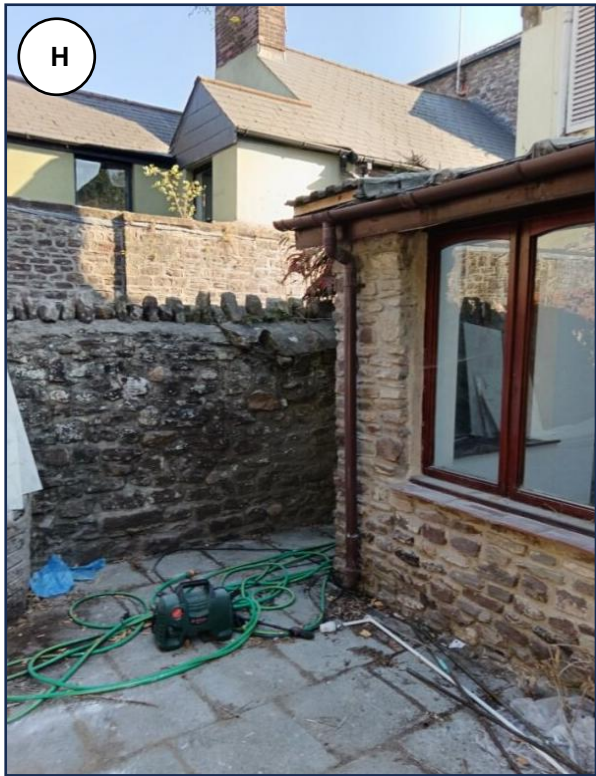
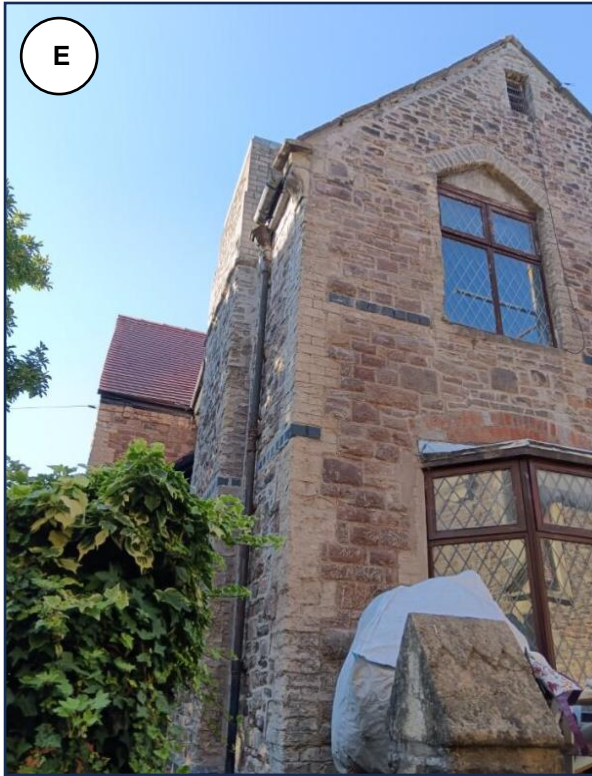
A site visit was conducted by one of our engineers on August 25th, 2025, to capture the existing condition of the property. The photographs taken provide a detailed representation of the current state of the building and surrounding area, which will serve as a valuable reference for future development and planning.

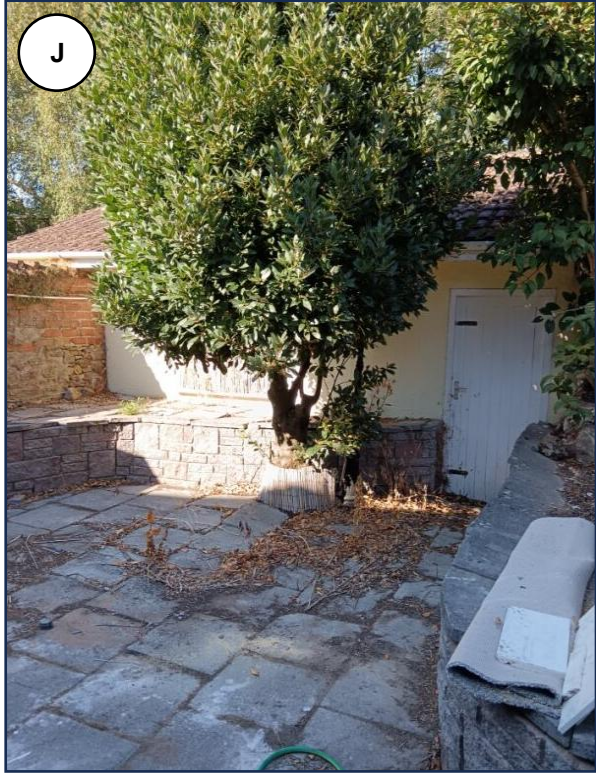
Internal Images

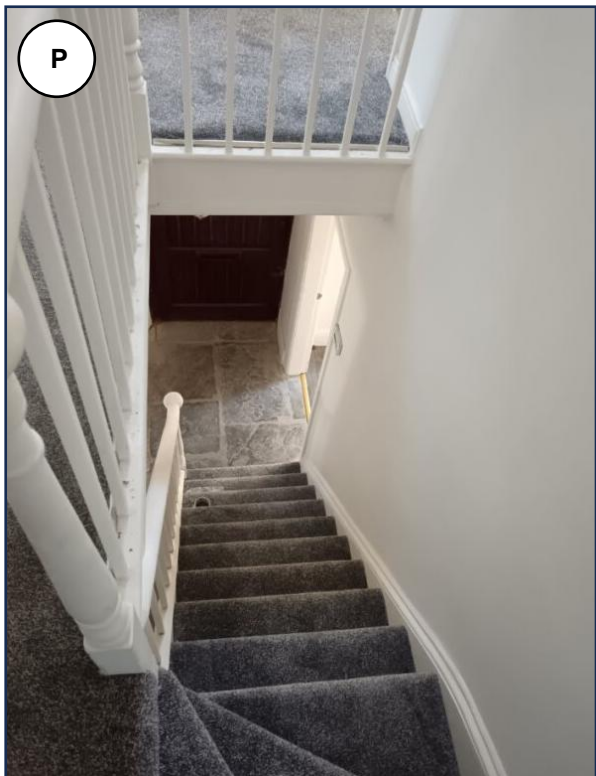
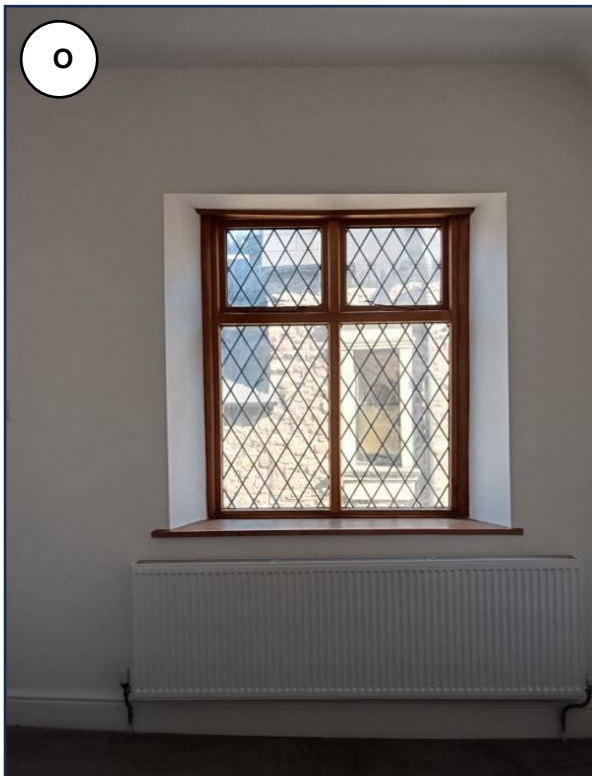
External Images















THIS CONCLUDES THE DOCUMENT