

**Concrete pad footings**

- P1 - 750x750
- P2 - 1000x1000
- P3 - 1500x1500
- P4 - 1000x2000

All pad footings to be min. 900 below ground level - cast in Gen 3 concrete

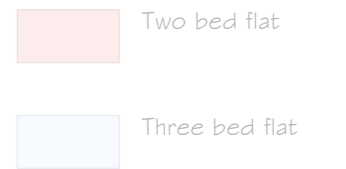
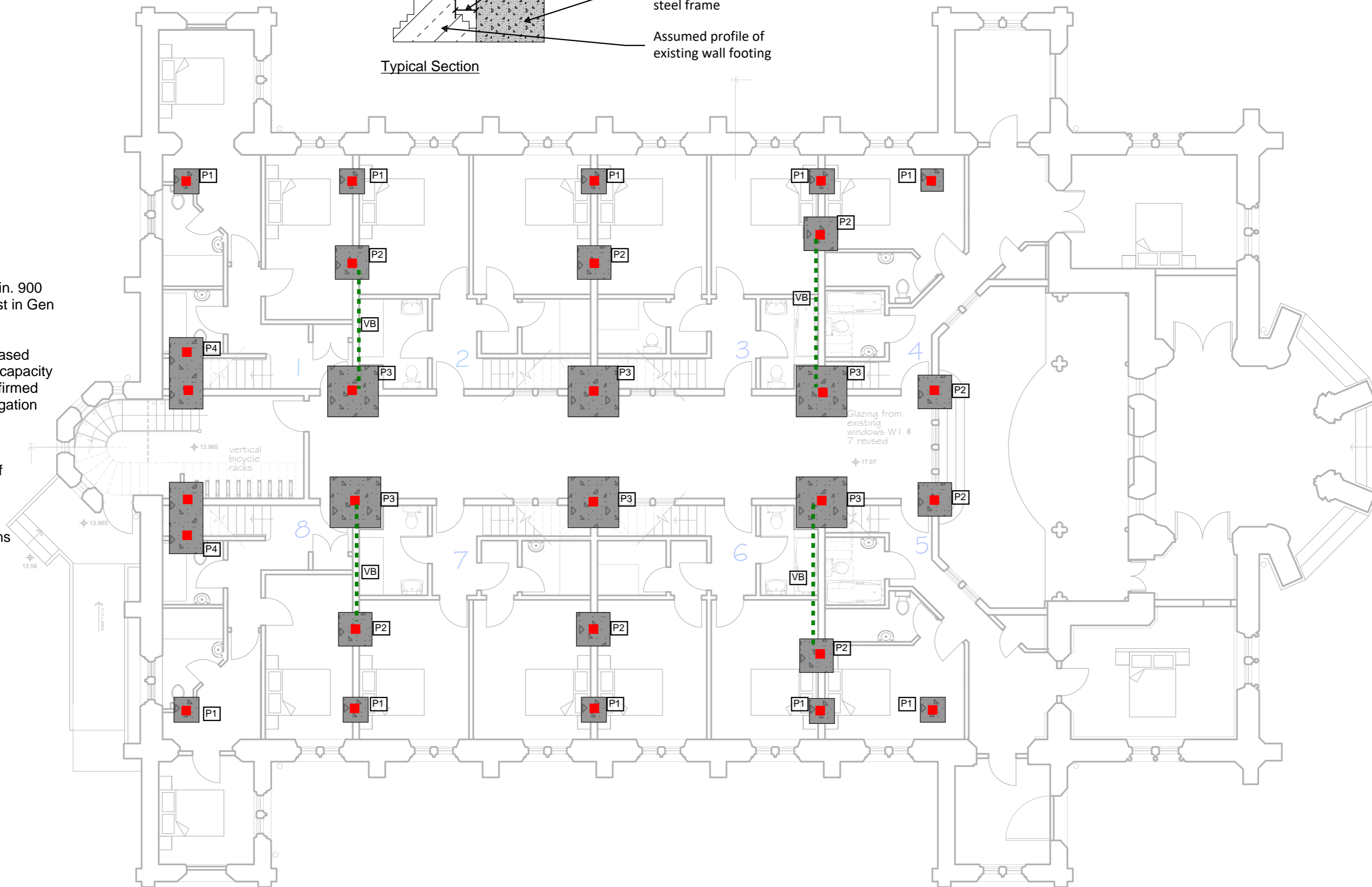
Sizing of pad footings based upon predicted bearing capacity of 100kN/m<sup>2</sup> - to be confirmed following ground investigation

**Columns**

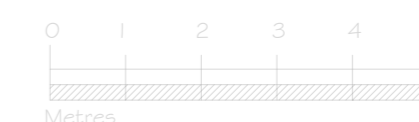
■ - Indicates location of column

All columns to be 152x152x30 UC sections

VB - Vertical bracing - nominally 100x12 Steel cross flats or 88.9x8.0 CHS

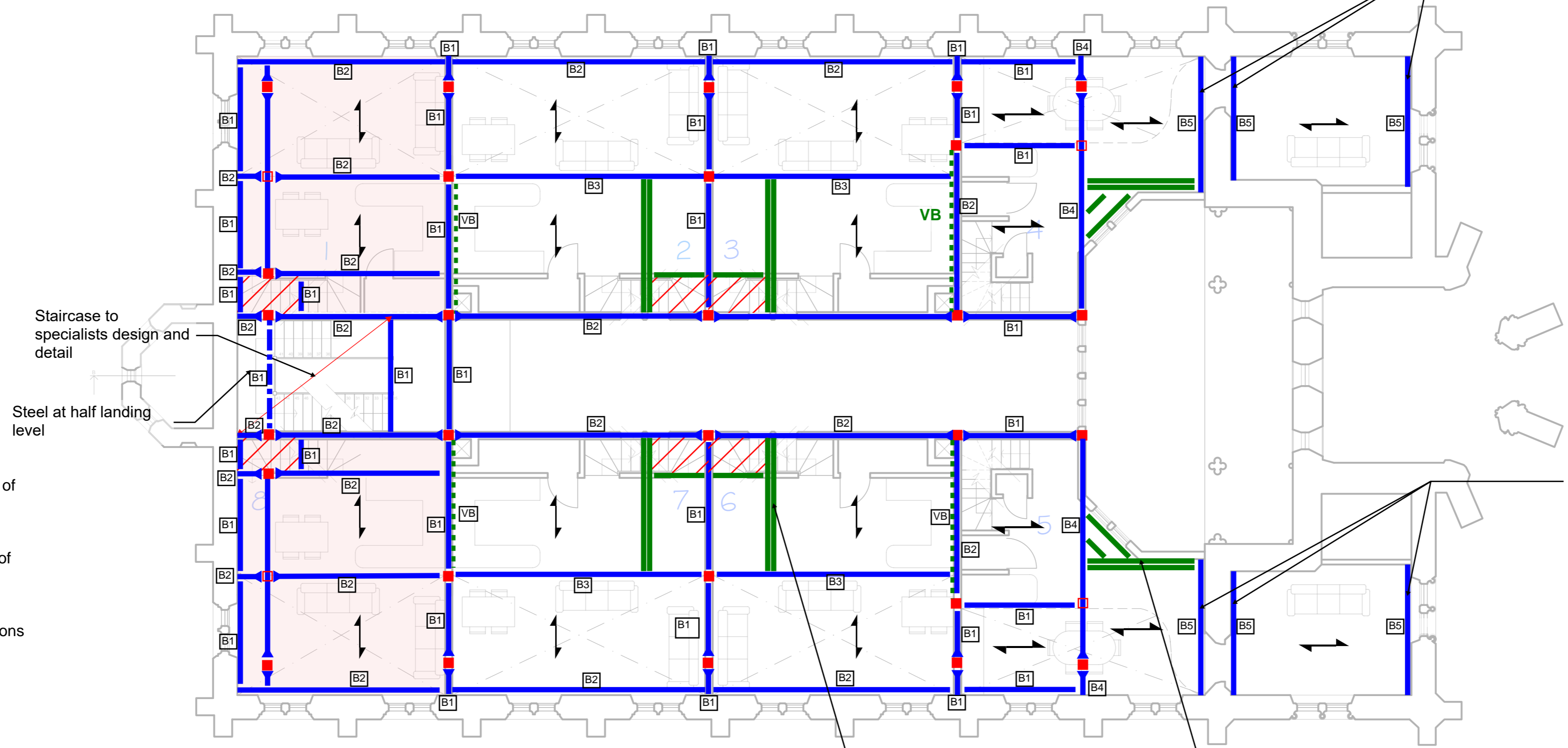


GROUND FLOOR PLAN



Span of 225 deep  
 posi-joists

Steel angles to provide support  
 to new Posi-Joist infill floor



Two bed flat  
 Three bed flat

**Columns**

- - Indicates location of column
- - Indicates location of columns over

All columns to be  
 152x152x30 UC sections

B1 - 203x133x30 UB  
 B2 - 254x146x31 UB  
 B3 - 305x127x37 UB  
 B4 - 406x178x54 UB  
 B5\* - 150x150x10 RSA

\* - Steel angles are to be fixed  
 back to wall via M16 resin fixings  
 at 400mm centres

➡ - Indicates full moment  
 connection at beam end

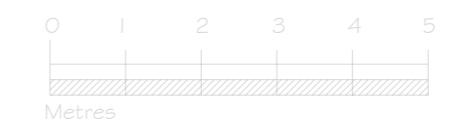
VB - Vertical bracing - nominally  
 100x12 Steel cross flats or  
 88.9x8.0 CHS

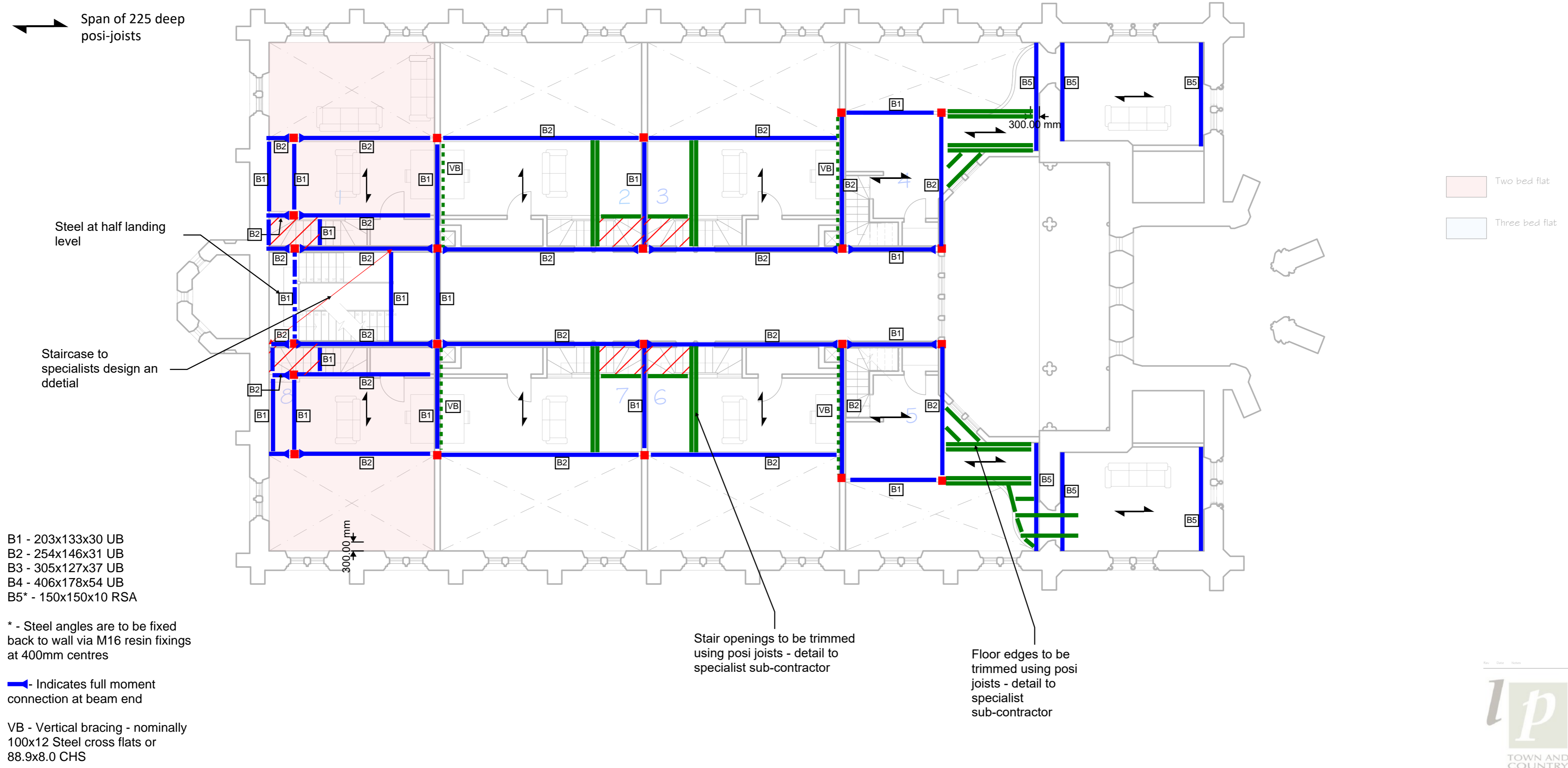
FIRST FLOOR PLAN

Stair openings to be trimmed  
 using posi joists - detail to  
 specialist sub-contractor

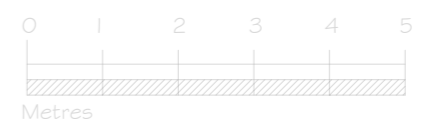
Floor edges to be trimmed  
 using posi joists - detail to  
 specialist  
 sub-contractor

Steel angles to provide support  
 to new Posi-Joist infill floor





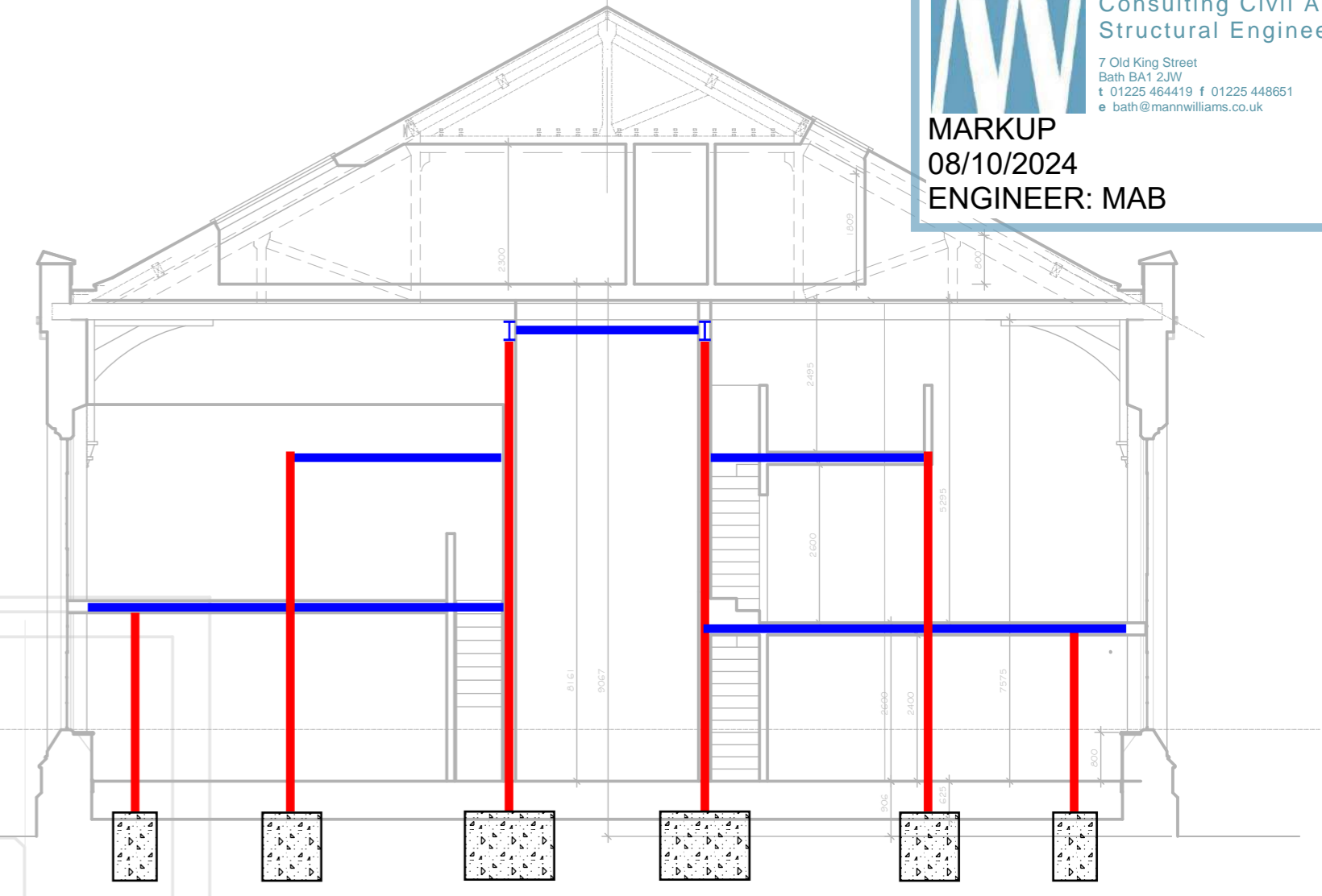
MEZZANINE LEVEL PLAN



B1 - 203x133x30 UB  
 B2 - 254x146x31 UB  
 B3 - 305x127x37 UB  
 B4 - 406x178x54 UB  
 B5\* - 150x150x10 RSA

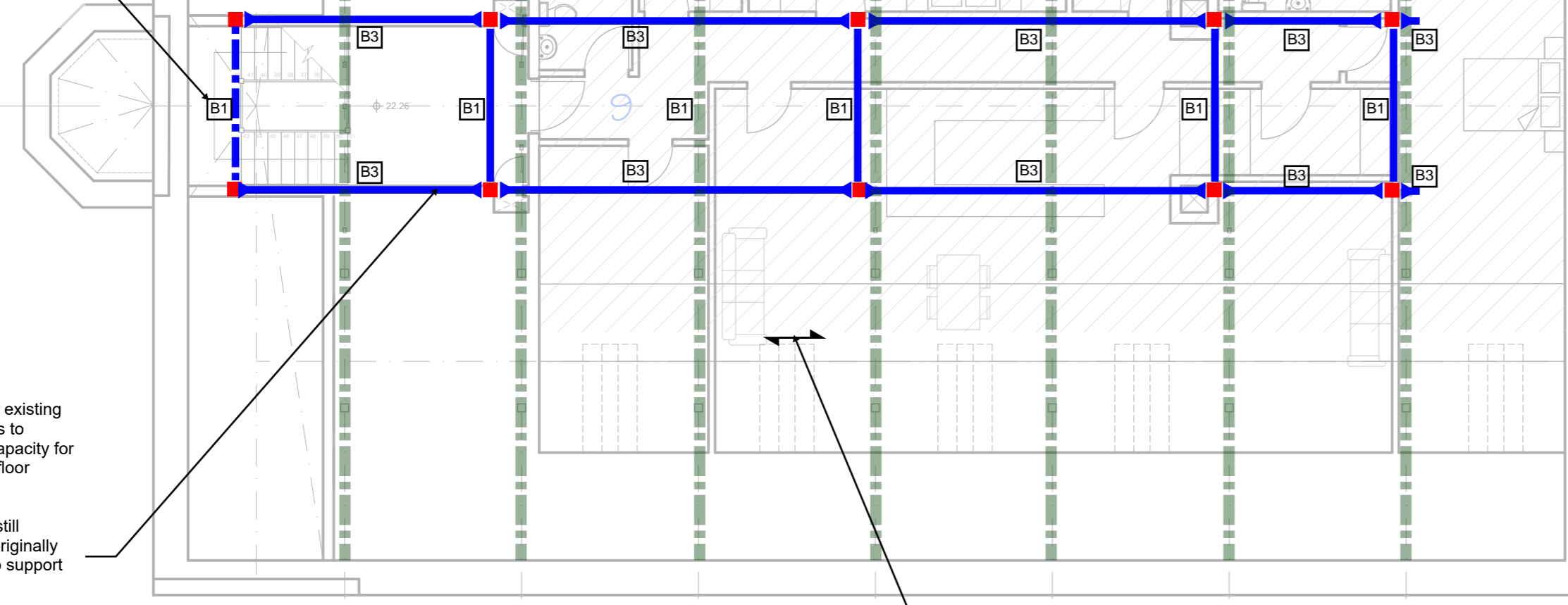
\* - Steel angles are to be fixed back to wall via M16 resin fixings at 400mm centres

← Indicates full moment connection at beam end



Indicative Section

Steel at half landing level



Steel frame to prop existing lower ties of trusses to provide sufficient capacity for truss ties to act as floor beams

Note - trusses are still required to act as originally intended in order to support roof load over

Repairs required to trusses are required prior to main works. Repair works are not in the scope of this design package.

Allow for strengthening existing floor joists throughout attic space by partnering with 150x50 C24 joists

SECOND FLOOR PLAN

Three bed flat  
 Ceiling height above 1.8m

