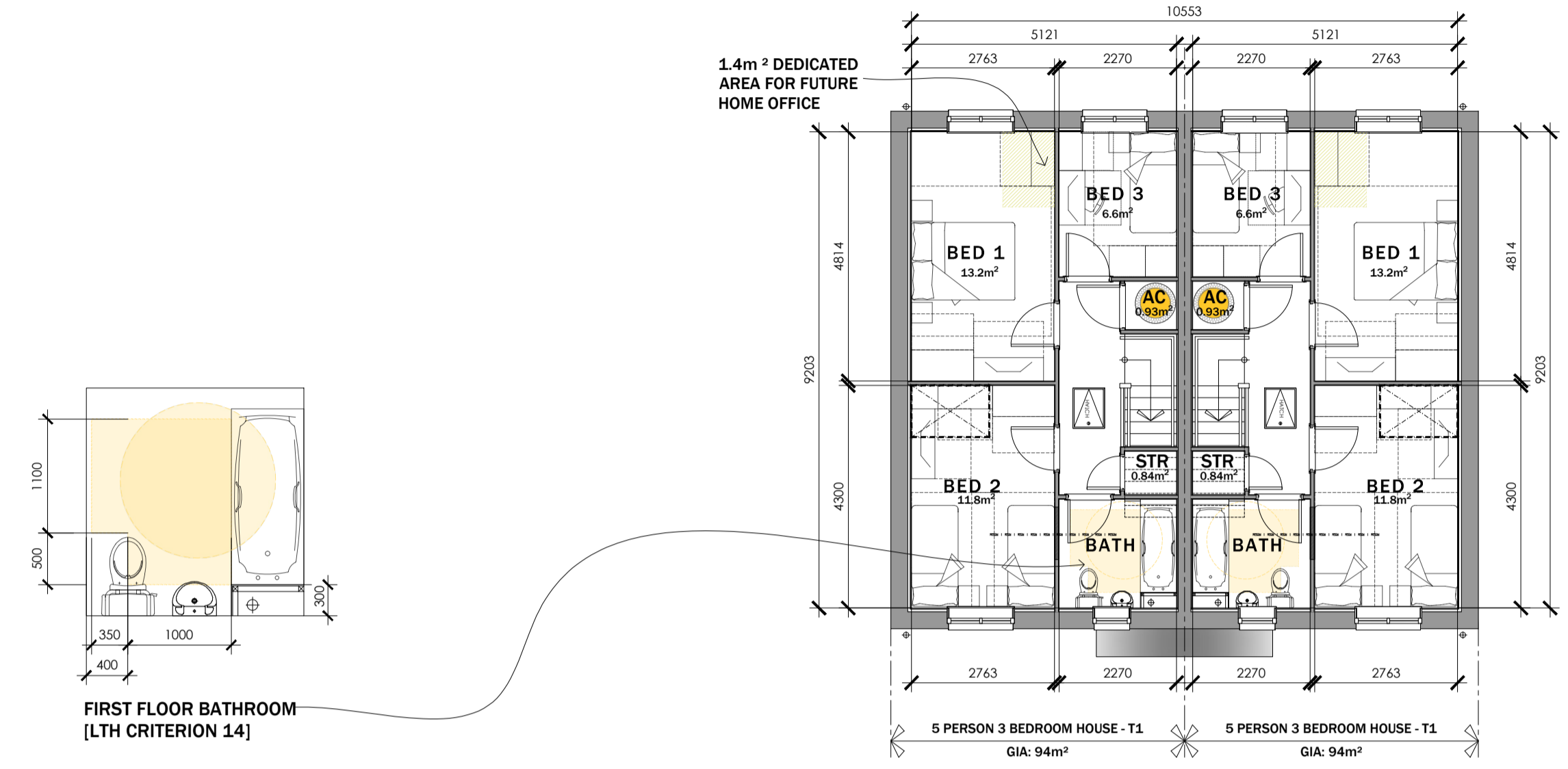


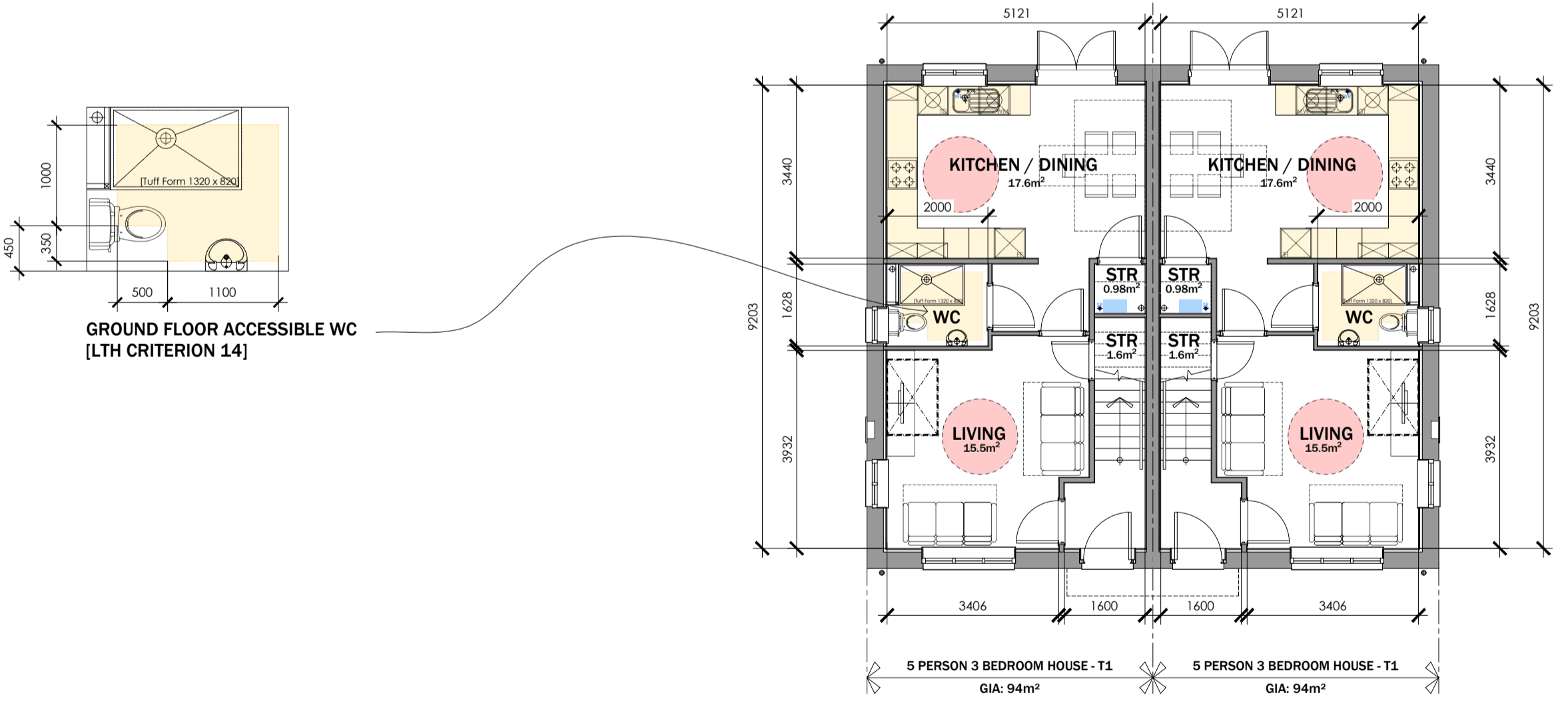
MATERIAL KEY LEGEND

- 1 RECONSTITUTED SLATE ROOF FINISHES - GREY
- 2 WHITE UPVC FASCIAS, SOFFITES AND BARGEBOARDS WITH BLACK RAINWATER GOODS
- 3 ANTHRACITE GREY UPVC DOUBLE GLAZED WINDOWS AND REAR DOOR UNITS
- 4 THRU COLOURED RENDER SYSTEM AS MAIN FINISHES - COLOUR TO SUIT PLOTS
- 5 GRP PORCH CANOPY OVER
- 6 FACING BRICKWORK UP TO DPC LEVEL
- 7 GRP COMPOSITE FRONT ENTRANCE DOORS COLOUR: TBC
- 8 ANTHRACITE GREY FIBRE CEMENT HORIZONTAL BOARDING DETAIL
- 9 LOCATION OF BIRD BOX - REFER TO ECOLOGISTS REPORT
- 10 LOCATION OF BAT BOX - REFER TO ECOLOGISTS REPORT
- 11 PV PANELS - EXACT LOCATIONS TO SUIT DWELLINGS ORIENTATION TO SOUTH

Do not scale from this drawing. The users of this drawing shall check all dimensions and specifications and accept any omissions to LeTrucco Design. This drawing is copyright. It must not be reproduced or used in any form without prior permission of LeTrucco Design.



FIRST FLOOR PLAN



GROUND FLOOR PLAN

STORAGE SCHEDULE:

5P3B HOUSE TYPE 1

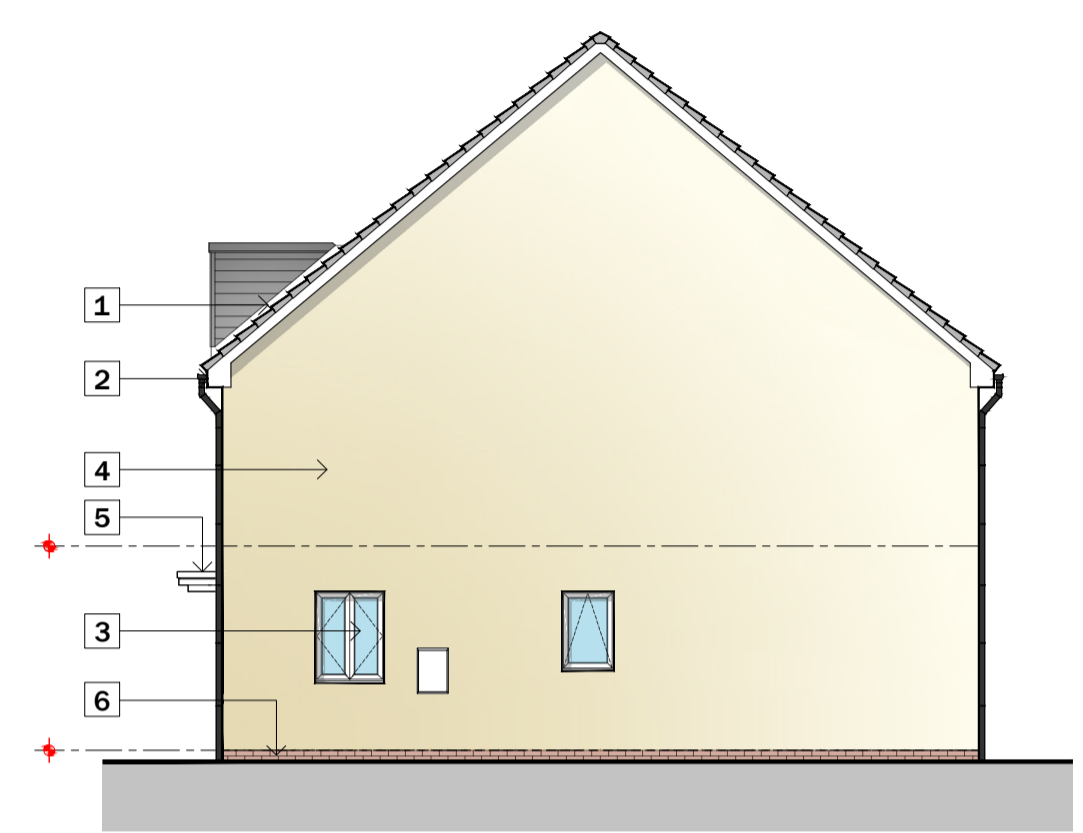
GROUND FLOOR:
 STORE: 0.98M²
 U/S STAIRS: 1.60M²

FIRST FLOOR:
 STORE: 0.84M²
 AC: 0.93M²

TOTAL STORAGE PROVIDED - 4.35M²
 TOTAL STORAGE REQUIRED - 2.5M²
 TOTAL STORAGE EXCESS - 1.85M²



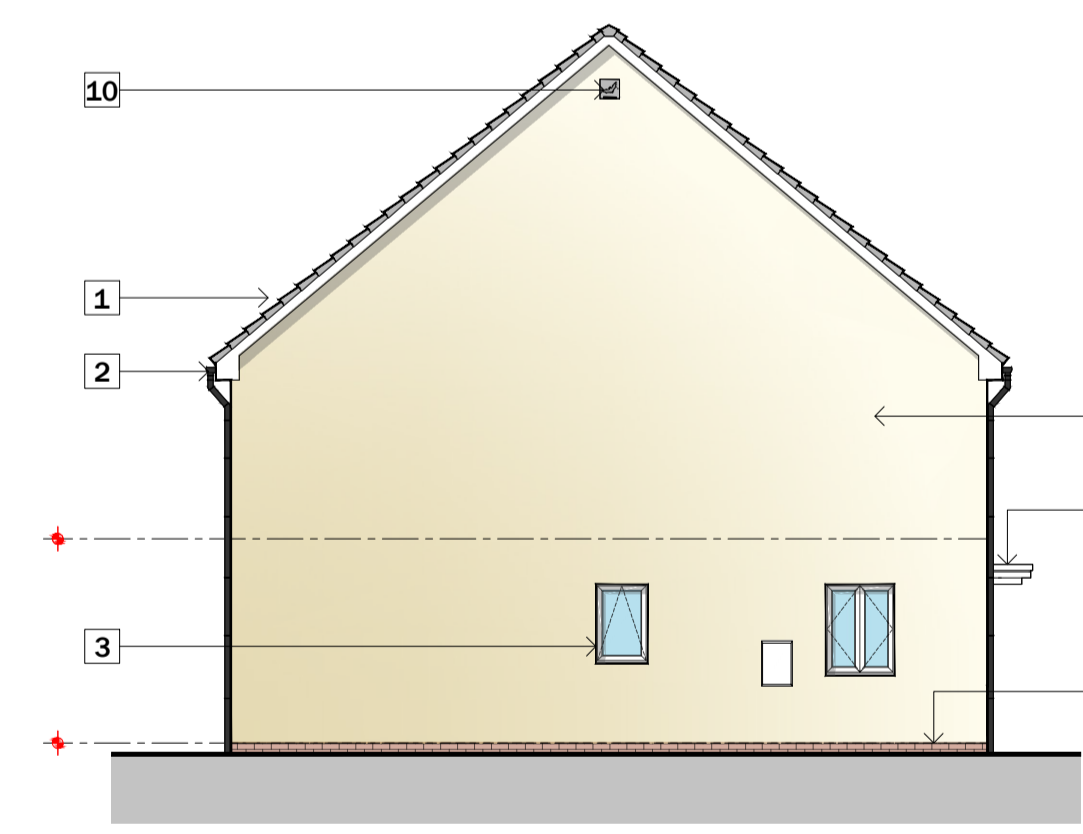
FRONT ELEVATION



SIDE ELEVATION

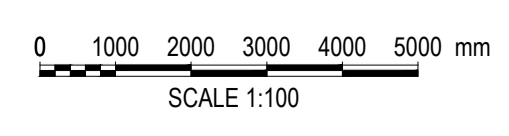


REAR ELEVATION



SIDE ELEVATION

5P 3B HOUSE TYPE 1
 Plots 12 - 13
 G.I.A = 94M² / 1011.81 ft²



Revisions

Rev: A Oct 25
 Drawing updated along with plot numbers to addresses (see report)

Drawing No	Revision	Scale	Date	Checked
LT2413.04.105	A	1:100 @ A1	Nov 24	KML

Drawing Purpose
 PLANNING

Client
 Welling / Bron Afon

Job Title
 Traston Lane, Newport

LeTrucco design
 ARCHITECTURE

Suite 7, 35 Stow Park Circle
 Newport, NP20 4HF

Tel: 07710390800 / 07710390801
 info@letruccodesign.co.uk
 www.letruccodesign.co.uk