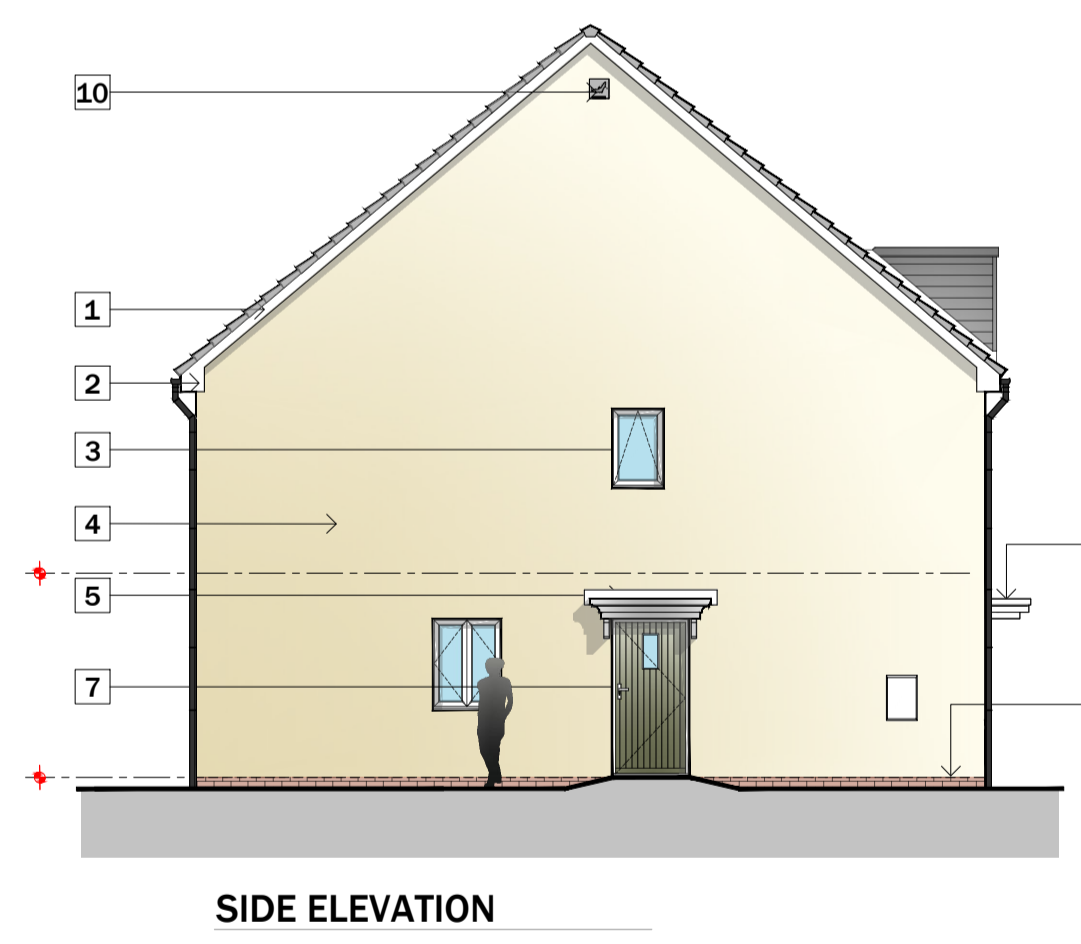
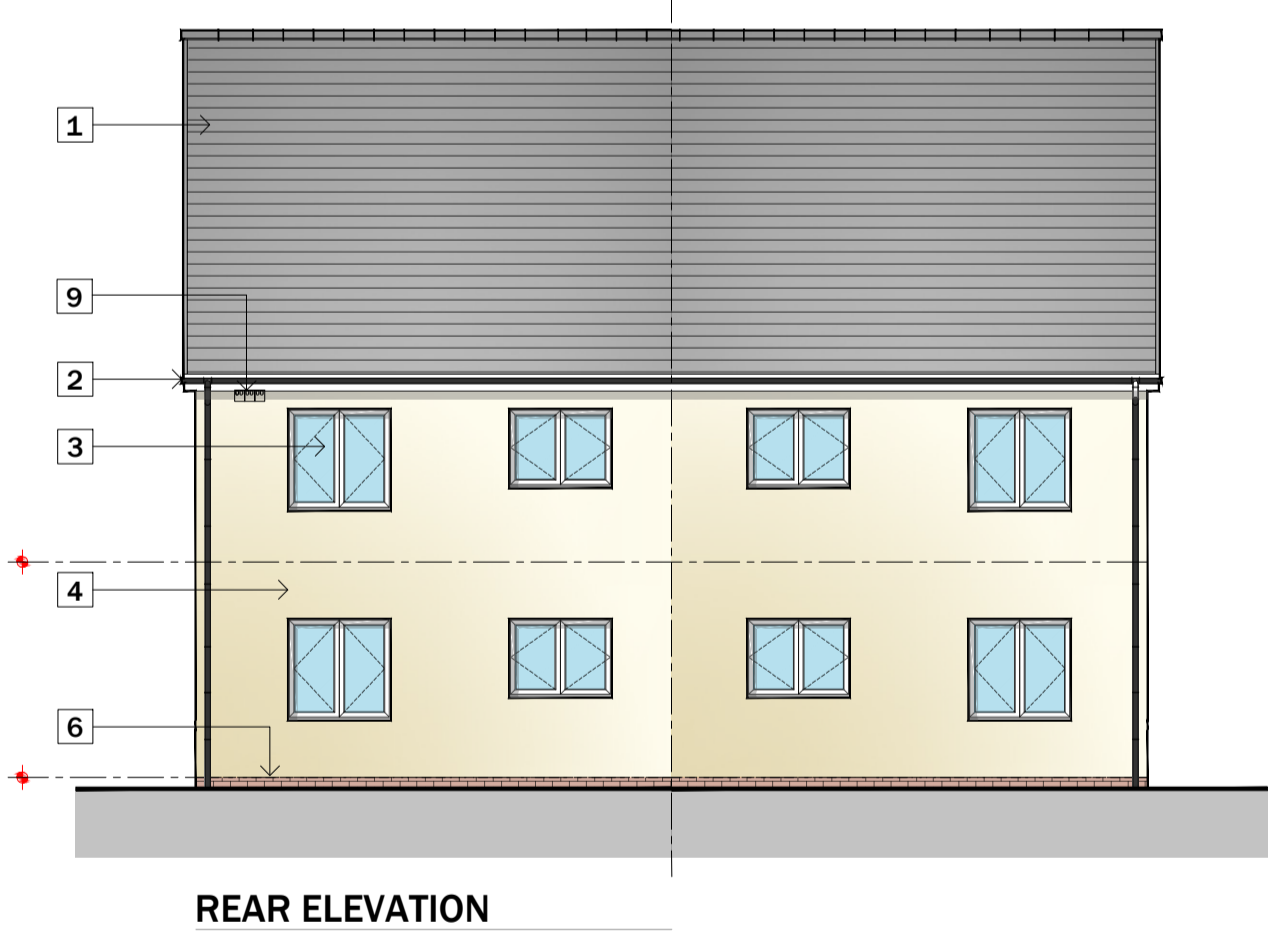
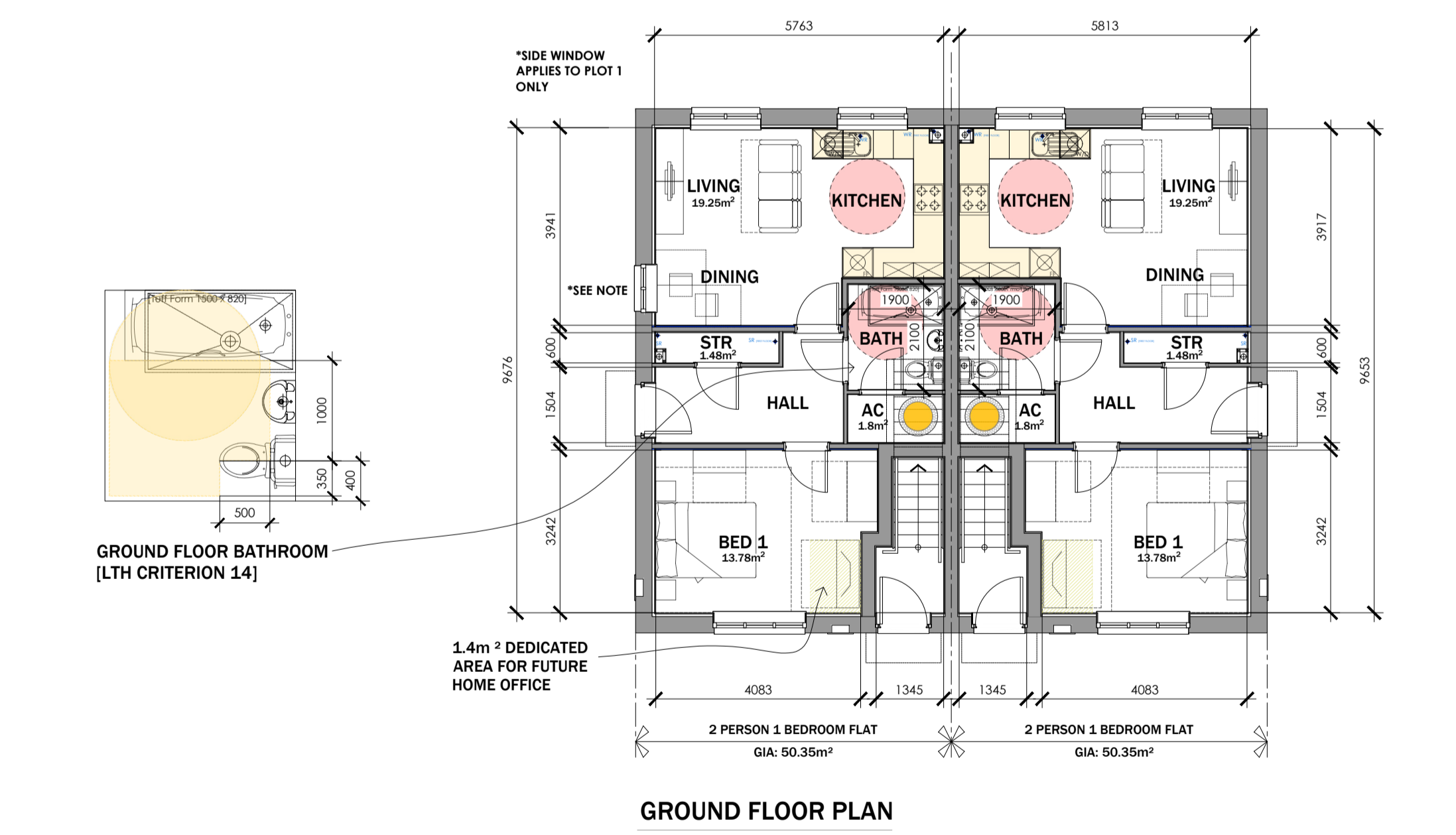
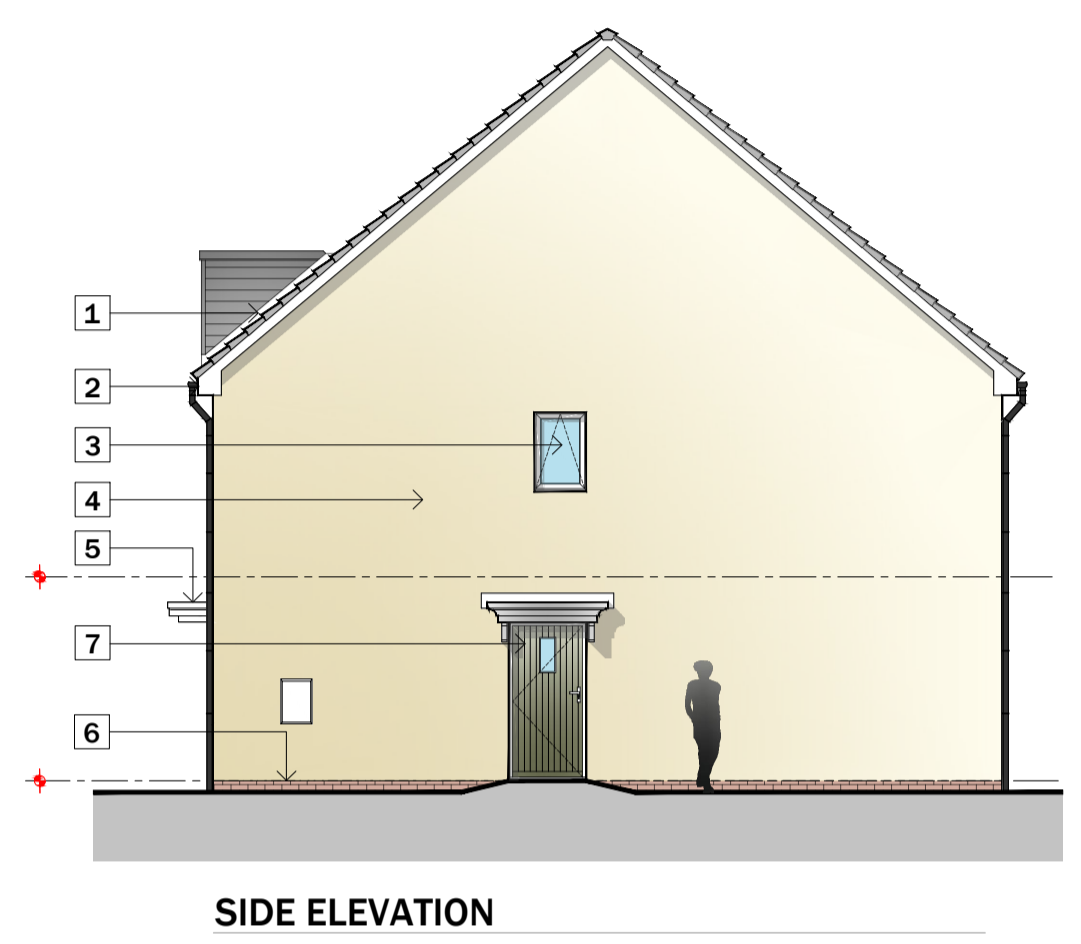
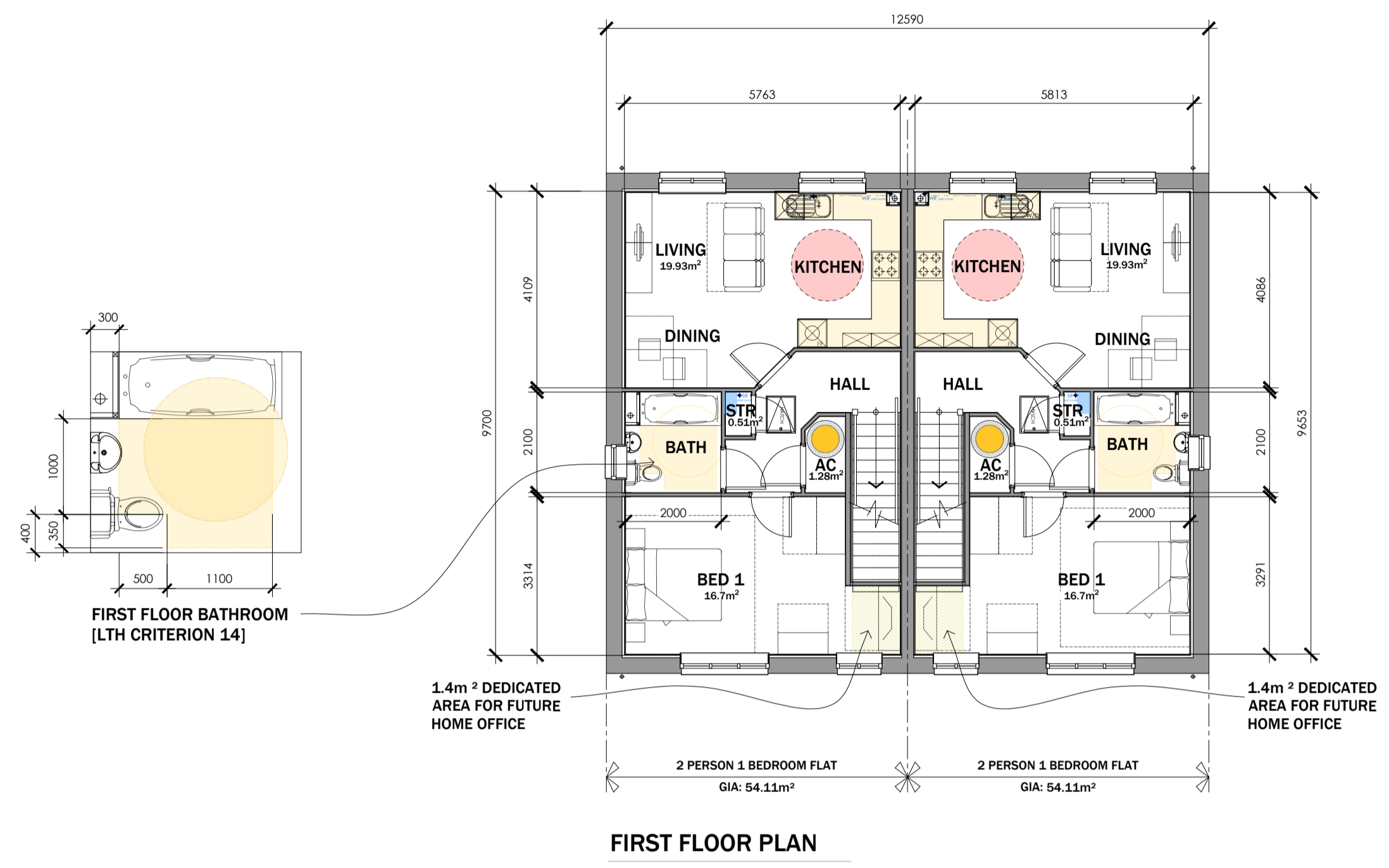


MATERIAL KEY LEGEND

- 1 RECONSTITUTED SLATE ROOF FINISHES - GREY
- 2 WHITE UPVC FASCIAS, SOFFITES AND BERGEBOARDS WITH BLACK RAINWATER GOODS
- 3 ANTHRACITE GREY UPVC DOUBLE GLAZED WINDOWS AND REAR DOOR UNITS
- 4 THRU COLOURED RENDER SYSTEM AS MAIN FINISHES - COLOUR TO SUIT PLOTS
- 5 GRP PORCH CANOPY OVER
- 6 FACING BRICKWORK UP TO DPC LEVEL
- 7 GRP COMPOSITE FRONT ENTRANCE DOORS COLOUR: TBC
- 8 ANTHRACITE GREY FIBRE CEMENT HORIZONTAL BOARDING DETAIL
- 9 LOCATION OF BIRD BOX - REFER TO ECOLOGISTS REPORT
- 10 LOCATION OF BAT BOX - REFER TO ECOLOGISTS REPORT
- 11 PV PANELS - EXACT LOCATIONS TO SUIT DWELLINGS ORIENTATION TO SOUTH

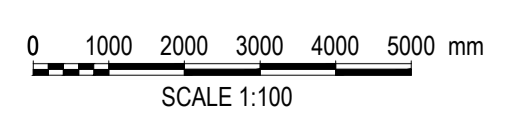
Do not scale from this drawing. The users of this drawing shall check all dimensions and specifications and omissions to LeTrucco Design. This drawing is copyright. It must not be reproduced or used in any form without prior permission of LeTrucco Design.



STORAGE SCHEDULE:

2P1B FLAT TYPE 1 GROUND FLOOR FLAT:	2P1B FLAT TYPE 2 FIRST FLOOR FLAT:
STORE: 1.48M²	AC: 1.28M²
AC UNDER STAIRS: 1.80M²	STORE: 0.51M²
TOTAL STORAGE PROVIDED - 3.28M²	TOTAL STORAGE PROVIDED - 1.79M²
TOTAL STORAGE REQUIRED - 1.5M²	TOTAL STORAGE REQUIRED - 1.5M²
TOTAL STORAGE EXCESS - 1.78M²	TOTAL STORAGE EXCESS - 0.29M²

2P 1B FLAT TYPE -
Plots 23 - 26
G.I.A = 54.11 m² / 582.44 ft²
50.35 m² / 541.96 ft²



Revisions
Rev.A Oct 25 - Revised and added numbers revised to suit updated fire layout

Drawing No	Revision	Scale	Date	Checked
LT2413.04.108	A	1:100 @ A1	Nov 24	KWL

Drawing Purpose: PLANNING

Client: Wellspring / Bron Afon
Job Title: 2P1B Flat Type - 23 - 26
Traston Lane, Newport

LeTruccodesign
ARCHITECTURE

Suite 7, 35 Stow Park Circle
Newport, NP20 4HF

Tel: 07710390800 / 07710390801
info@letruccodesign.co.uk
www.letruccodesign.co.uk