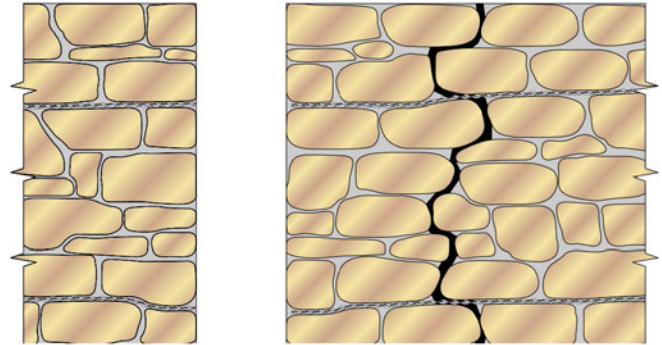


Repair of a Crack Near a Corner in a Stone Wall using HeliBars

METHOD STATEMENT

1. Using a twin-bladed, diamond-tipped wall chaser and vacuum attachment, cut slots into the horizontal mortar joints, to the specified depth and at the required vertical spacing. Ensure that NO mortar is left attached to the exposed stone surfaces in order to provide a good masonry/grout bond. This operation may require the use of hand tools to remove the mortar due to the random nature of the stone.
2. Remove ALL dust and mortar from the slots and thoroughly flush with water. Where the substrate is very porous or flushing with water is inappropriate, use HeliPrimer WB. Ensure the slot is damp or primed prior to commencing step 5.
3. Mix HeliBond cementitious grout using a power mixer and load into the Helifix Pointing Gun CS.
4. Fit appropriate mortar nozzle.
5. Inject a bead of HeliBond grout, approx. 15mm deep, into the back of the slot.
6. Push the 6mm HeliBar into the grout to obtain good coverage.
7. Inject a second bead of HeliBond grout over the exposed HeliBar and iron it into the slot using a finger trowel. Inject additional HeliBond grout as necessary, leaving 10-15mm for new pointing.
8. Point up the remaining slot with a suitable matching mortar and make good the crack using an appropriate Helifix bonding agent depending on the width of the crack.
9. Clean tools with clean, fresh water.

N.B. Pointing may be carried out as soon as is convenient after the HeliBond has started to gel.



RECOMMENDED TOOLING

- **For cutting slots up to 40mm deep**
Twin-bladed cutter with vacuum attachment
- **For mixing HeliBond**
3-jaw-chuck drill with mixing paddle
- **For injection of HeliBond into slots**
Helifix Pointing Gun CS with mortar nozzle
- **For smoothing pointing**
Standard finger trowel

Specification Notes

The following criteria are to be used unless specified otherwise:

- A. Depth of slot into the masonry to be 35mm to 40mm.
- B. Height of slot to be equal to full mortar joint height, with a minimum of 8mm. For thin mortar joint specifications refer to the Helifix Technical Dept.

Continued...

- C.** HeliBar to be long enough to extend a minimum of 500mm either side of the crack or 500mm beyond the outer cracks if two or more adjacent cracks are being stitched using one rod.
- D.** Normal vertical spacing is 450mm.
- E.** Where a crack is less than 300mm from the end of a wall or an opening the HeliBar is to be continued for at least 100mm around the corner and bonded into the adjoining wall.
- F.** In hot conditions ensure the masonry is well wetted or primed to prevent premature drying of the HeliBond due to rapid de-watering. Ideally additional wetting of the slot, or priming with HeliPrimer WB, should be carried out just prior to injecting the HeliBond grout.
- G.** Do not use HeliBond when the air temperature is +4°C and falling or apply over ice. In all instances the slot must be thoroughly damp or primed prior to injection of the HeliBond grout.

The above specification notes are for general guidance only and Helifix reserves the right to amend details/notes as necessary.

GENERAL NOTES

If your application differs from this repair detail or you require specific advice on your particular project or Helifix products, call our Technical Sales Team on **020 8735 5222**.

Our Technical Department can provide you with a full support service including:

- Advice, assistance and recommendations on all structural repair matters
- Devising and preparing complete repair proposals for specific situations
- An insurance-backed warranty via our Approved Installers scheme