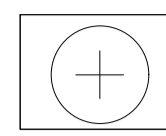


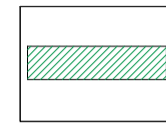

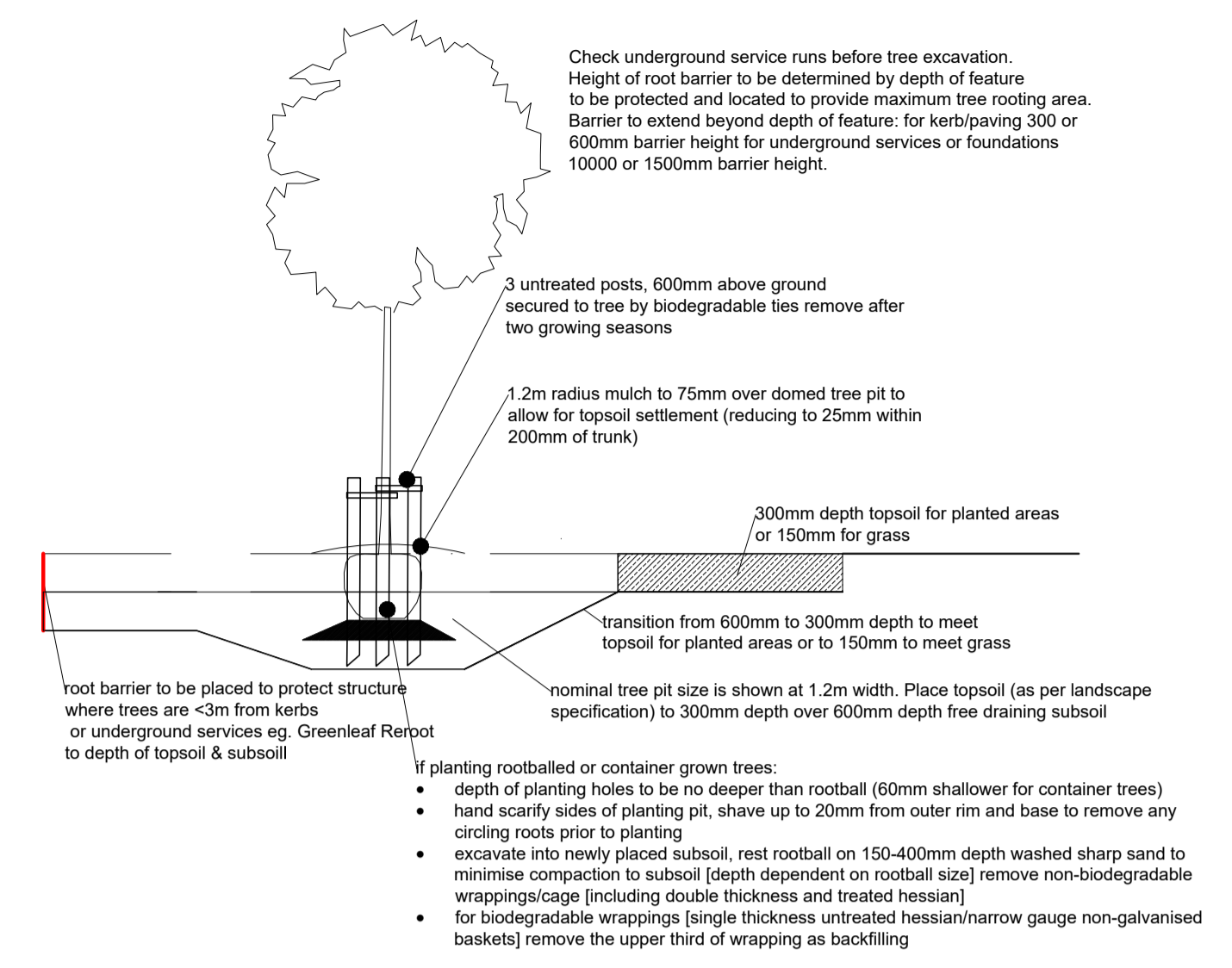


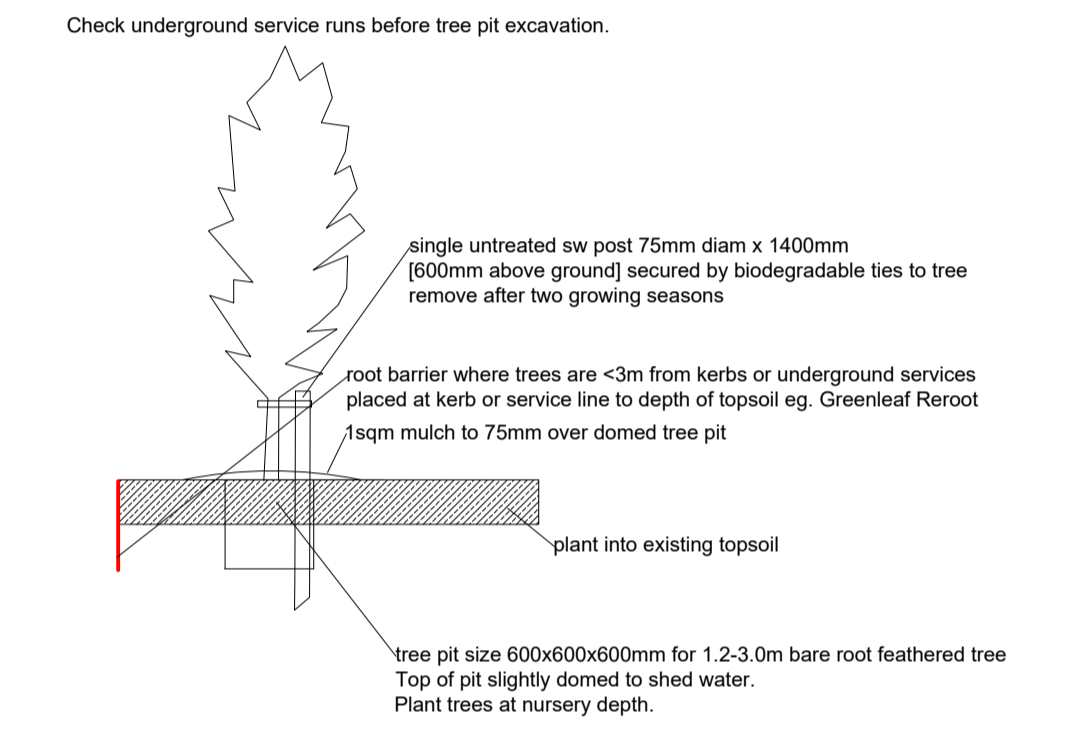
Notes

-  proposed trees
-  proposed native mixed hedges underseeded with Emorsgate EH1 Hedgerow Mix
-  proposed evergreen ornamental hedges
-  proposed low native ferns and bulb planting
-  species rich seed mix close mown eg Germinal WFG20 at 10g/sqm can also be maintained on a less regular basis by strimming

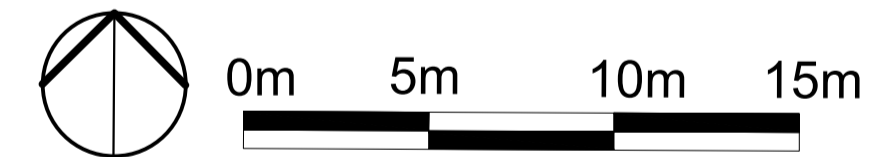
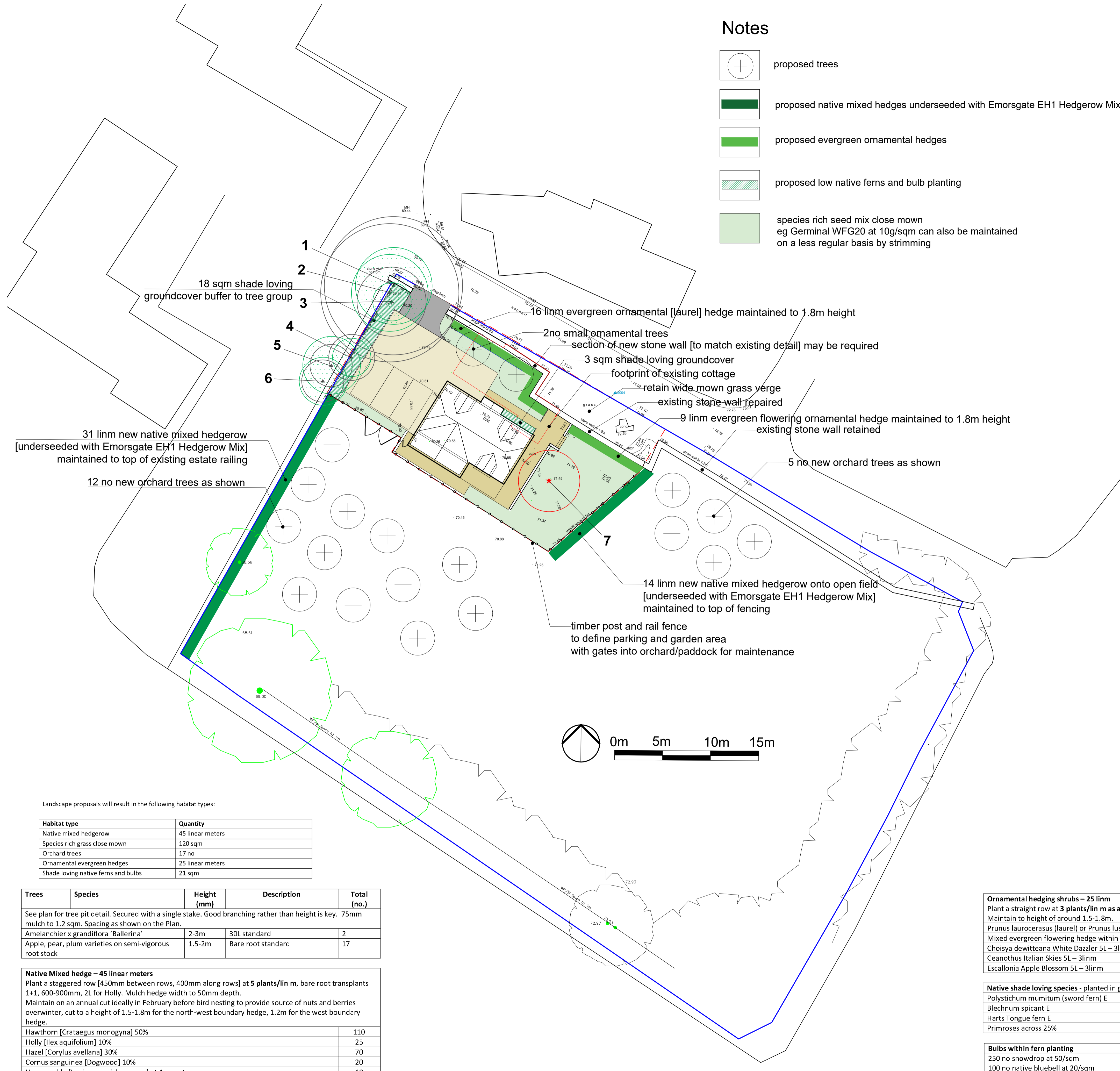
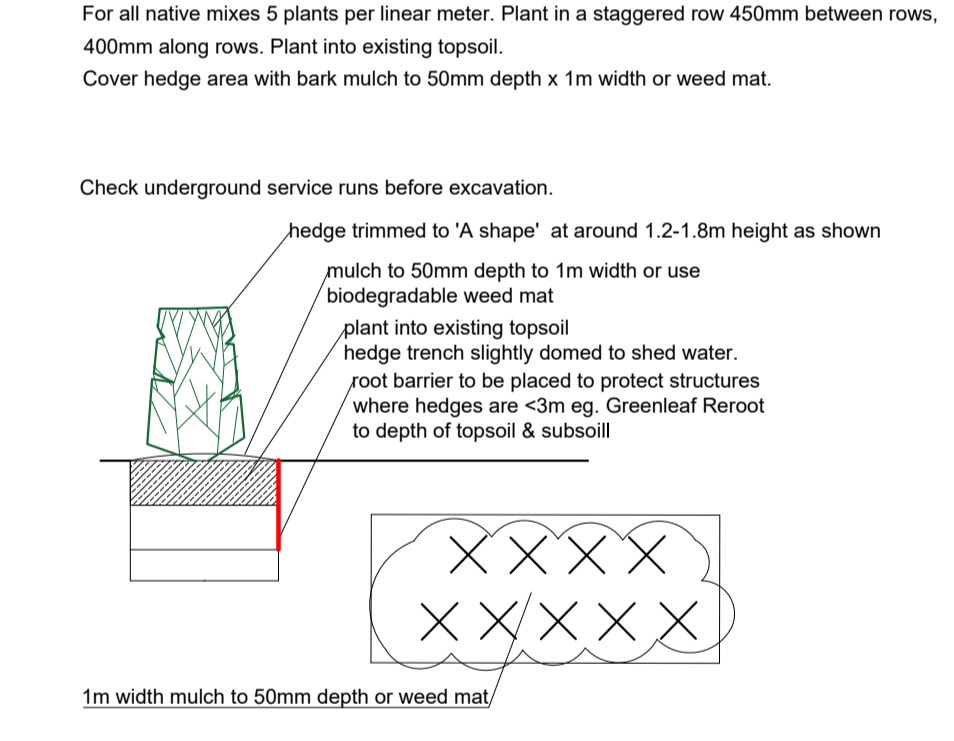
STANDARD TREE PIT DETAIL



ORCHARD TREE PIT DETAIL



NATIVE MIXED HEDGE PLANTING DETAIL



Landscape proposals will result in the following habitat types:

Habitat type	Quantity
Native mixed hedgerow	45 linear meters
Species rich grass close mown	120 sqm
Orchard trees	17 no
Ornamental evergreen hedges	25 linear meters
Shade loving native ferns and bulbs	21 sqm

Trees	Species	Height (mm)	Description	Total (no.)
See plan for tree pit detail. Secured with a single stake. Good branching rather than height is key. 75mm mulch to 1.2 sqm. Spacing as shown on the Plan.				
	Amelanchier x grandiflora 'Ballerina'	2-3m	30L standard	2
	Apple, pear, plum varieties on semi-vigorous root stock	1.5-2m	Bare root standard	17

Native Mixed hedge – 45 linear meters				
Plant a staggered row [450mm between rows, 400mm along rows] at 5 plants/lin m, bare root transplants 1+1, 600-900mm, 2L for Holly. Mulch hedge width to 50mm depth. Maintain on an annual cut ideally in February before bird nesting to provide source of nuts and berries overwinter, cut to a height of 1.5-1.8m for the north-west boundary hedge, 1.2m for the west boundary hedge.				
	Hawthorn [Crataegus monogyna]	50%		110
	Holly [Ilex aquifolium]	10%		25
	Hazel [Corylus avellana]	30%		70
	Cornus sanguinea [Dogwood]	10%		20
	Honeysuckle [Lonicera periclymenum]	at 4m centres		10

Ornamental hedging shrubs – 25 linn				
Plant a straight row at 3 plants/lin m as a hedge. Mulch full hedge width of 800mm to 50mm depth. Maintain to height of around 1.5-1.8m.				
	Prunus laurocerasus (laurel) or Prunus lusitanica (Portuguese laurel) 5L – 16linm			48
Mixed evergreen flowering hedge within rear garden for pollinators:				
	Choisy dewitteana White Dazzler 5L – 3linm			9
	Ceanothus Italian Skies 5L – 3linm			9
	Escallonia Apple Blossom 5L – 3linm			9

Native shade loving species - planted in groups of 3 or 5 no. Mulch to 50mm depth				
	Polystichum munitum (sword fern) E	2L	5/sqm	35
	Blechnum spicant E	2L	5/sqm	35
	Harts Tongue fern E	2L	5/sqm	35
	Primroses across 25%	0.5L	8/sqm	40

Bulbs within fern planting		
250 no snowdrop at 50/sqm	Plant in informal drifts in species groups	5 sqm
100 no native bluebell at 20/sqm	centres/depths as per suppliers recommendation	5sqm

All dimensions must be checked on site and not scaled from this drawing.

This drawing is for the purposes of PLANNING. Based on Ordnance Survey data. OS Licence 100043966

Refer to Planting and Maintenance Schedule by Mackley Davies Assoc Ltd.

Refer to Tree Survey by Mackley Davies Assoc Ltd.

MACKLEY DAVIES ASSOCIATES LTD
Ffynnon yr Eirin . Crickhowell Road. Gilwern Abergavenny . NP7 0EH . 01873 831796 . gill@mackleydaves.co.uk

Garden Cottage, Rhiwderin NP10 8RT

David Williams Homes Ltd

DRAWING TITLE
Soft Landscape Plan

1:250 @ A1	Job No.	24/1053/03
August 2024	REVISION No.	