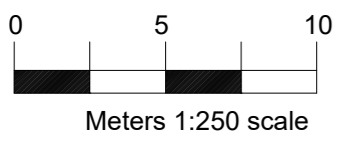


Site Block Plan As proposed
1:250 scale



Proposed hedge planting schedule and specification to be used where appropriate for infill & repair of existing hedgerow.

(i) Ground preparation:
Clear the planting area of weeds and rubble. Dig over the planting area, turning over any turf and planting in the upturned soil.

(ii) Species:
Hedge plants purchased will be 45-60cm whips. The mix of local species will be as follows:

Hedge Plants:

Hawthorn	<i>Crataegus monogyna</i>	40%
Hazel	<i>Corylus avellana</i>	25%
Holly	<i>Ilex aquifolium</i>	15%
Field Maple	<i>Acer campestre</i>	10%
Dogwood	<i>Cornus sanguinea</i>	5%
Guelder Rose	<i>Viburnum opulus</i>	3%
Spindle	<i>Euonymus europaeus</i>	2%

(iii) Numbers and Spacing:
Hedge plant spacing to be at 0.3m intervals in two rows, 0.3m apart. Planting should be staggered so that a plant in the second row is mid-way between plants in the first row. This would give about 6 plants per running metre of (double) hedge-line.

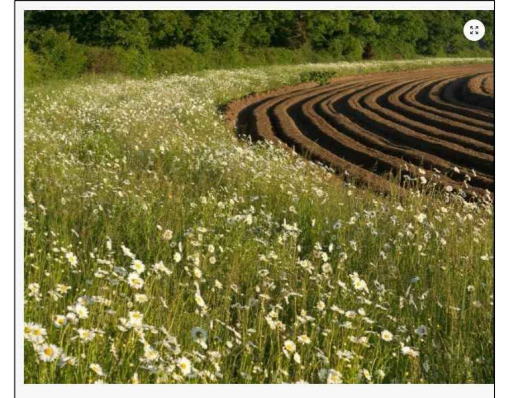
(iv) Planting season:
Hedge plants to be supplied bare rooted and planted in the winter months from November to March, when the roots are dormant.

(v) Maintenance:
Protection:
Spiral guards for the hedge plants to be installed.
Weeding: will be carried out for the first 3 years, either by hand or by chemical spraying.

Beating up (replacement of failed plants): Will be undertaken as required in order to maintain the continuity of the hedge line.

Pruning: The hedge will be pruned after the first or second year to encourage extra-thick multiple growth.

Trimming:
Sides will be trimmed from year 3 onwards, in order to maintain good shape to the sides and maintain the hedge line. Hedge will be left to attain a height of 2 metres.



EM1 Wildflower mix

- Biodiversity enhancements**
- Native hedgerow planing.
 - Wildflower meadows



SUDs Planter

GriffithsDesign Architectural Technologists. Tel: 07969446621 Email: griffithsdesign@outlook.com		
Client	Messrs Williams	
Project	Replacement dwelling; Summerleaze Cottage Green Street Caldicot NP26 3DE	
Drawing	Proposed block plan	
Date	May 2024	Scale As Shown @ A2
Drawn by	JG	Drawing No [PP] 05
Checked by	***	
Revision		