

Refuse vehicles access site from either end of Witham Street as shown. This is the route(s) taken when collecting from existing houses. Vehicles can park within 10-14m from Bin Store and access is via a level hard surface all in accordance with 4.1 of Newport City Council's Waste Storage and Collection SPG - Jan 2020.



Bin store is easily accessible by residents along a footpath from Main Entrance.

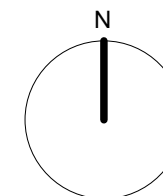


Bin numbers:

**Waste**  
 120l per apartment  
 = 4200l  
 = 4 large 1100l bins

**Recycling**  
 2 x 1100l card  
 2 x 1100l plastic/cans  
 2 x 360l glass  
 2 x 240l food

Which gives a total of:  
 8 number 1100l bins  
 2 number 360l bins  
 2 number 240l bins



Kennedy James Griffiths  
 Chartered Architects and Project Managers  
 Project



T 02920 545100  
 10 Victoria Park Court  
 516 Cowbridge Road East  
 Cardiff  
 CF5 1DB

**Proposed Apartments**  
**Kelvedon Street, Newport**

Title  
**Waste Strategy**

Date  
 14 09 2022

Status  
**Planning Application**

Scale @ A3  
 1:200

Job Number  
**1660-PL1-09**

Revision  
 Drawn by  
 CKG

Use figured dimensions where possible. Do not scale for construction purposes.  
 This drawing is copyright.