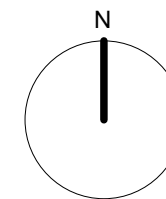




- KEY:**
- Area of RPZ unaffected by proposed works
 - Area of RPZ where new surface is landscaping or permeable surface with minimum surface disruption required
 - Area of RPZ where foundations/construction required
 - Area of RPZ previously under tarmac/service yard

Tree	Type	Cat	area m ² /%	area m ² /%	area m ² /%	area m ²
T1	False Acacia	B	91.0/87.5	12.1/11.5	1.0/1.0	104.1/100
T3	Lime	A	45.3/81.7	9.10/16.6	1.04/1.65	55.4/100
T4	Lime	A	77.5/88.5	9.3/10.7	0.75/0.8	87.6/100



Kennedy James Griffiths
Chartered Architects and Project Managers
Project
Proposed Apartments
Kelvedon Street, Newport

KJG
T 02920 545100
10 Victoria Park Court
516 Cowbridge Road East
Cardiff
CF5 1DB

Title	Date
Root Protection Areas	16 12 2024
Status	Scale @ A3
Planning Application	1:200
Job Number	Revision
1660-PL1-10	CKG

Use figured dimensions where possible. Do not scale for construction purposes.
This drawing is copyright.