

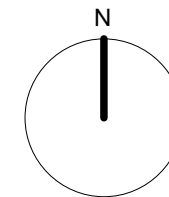


- KEY:**
- Area of RPZ unaffected by proposed works
  - Area of RPZ where new surface is landscaping or permeable surface with minimum surface disruption required
  - Area of RPZ where foundations/construction required
  - Area of RPZ previously under tarmac/service yard

Tree	Type	Cat	area m <sup>2</sup> /%	area m <sup>2</sup> /%	area m <sup>2</sup> /%	area m <sup>2</sup>
T1	False Acacia	B	91.0/80.6	12.0/10.6	10/8.8	113/100
T3	Lime	A	45.3/81.7	9.10/16.6	1.04/1.65	55.4/100
T4	Lime	A	87.6/100	0/0	0/0	87.6/100



Rev B 27 03 25 Revisited to suit new layout  
 Rev A 22 01 25 Tree Canopies from Tree Survey added



Kennedy James Griffiths  
 Chartered Architects and Project Managers  
 Project  
**Proposed Apartments**  
**Kelvedon Street, Newport**

  
 T 02920 545100  
 10 Victoria Park Court  
 516 Cowbridge Road East  
 Cardiff  
 CF5 1DB

Title **Root Protection Areas** Date 16 12 2024

Status **Planning Application** Scale @ A3 1:200

Job Number **1660-PL1-10** Revision **B** Drawn by CKG

Use figured dimensions where possible. Do not scale for construction purposes.  
 This drawing is copyright.