

Bin store with Sedum Roof and timber cladding supplied by Urban Spec: <https://urbanspec.co.uk/products/bin-store-buildings/>
 Store to accommodate bins as shown and as described in the DAS Store fixed to concrete slab and to have hard standing on pavement side for presentation of bins on collection day as shown on site plan. Further details can be found on the submitted data sheet.
 Model number is: HB:36:74 with Sedum Roof.
 The Green roofs to the bin store and the bike store will be a Bauder Extensive Sedum blanket on a cold bitumen applied waterproof finish as seen at:

<https://www.bauder.co.uk/green-and-blue-roofs/green-roofs/extensive-lightweight-sedum>

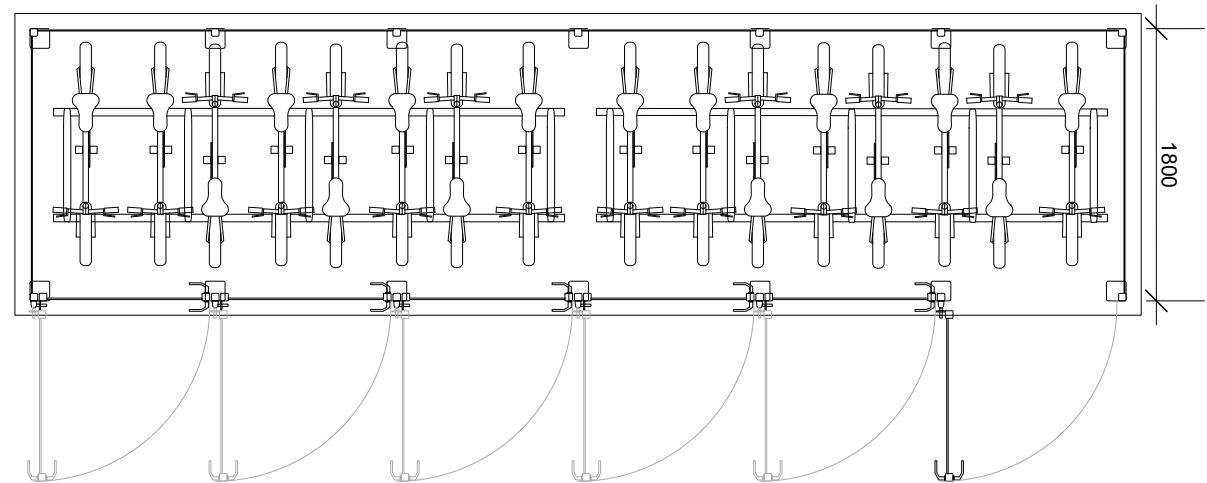
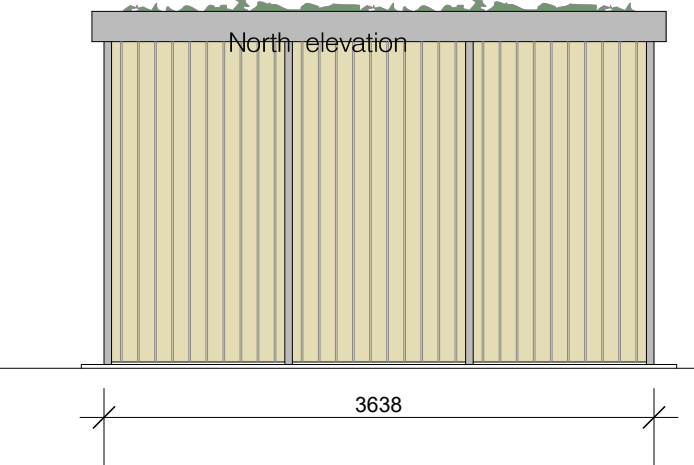
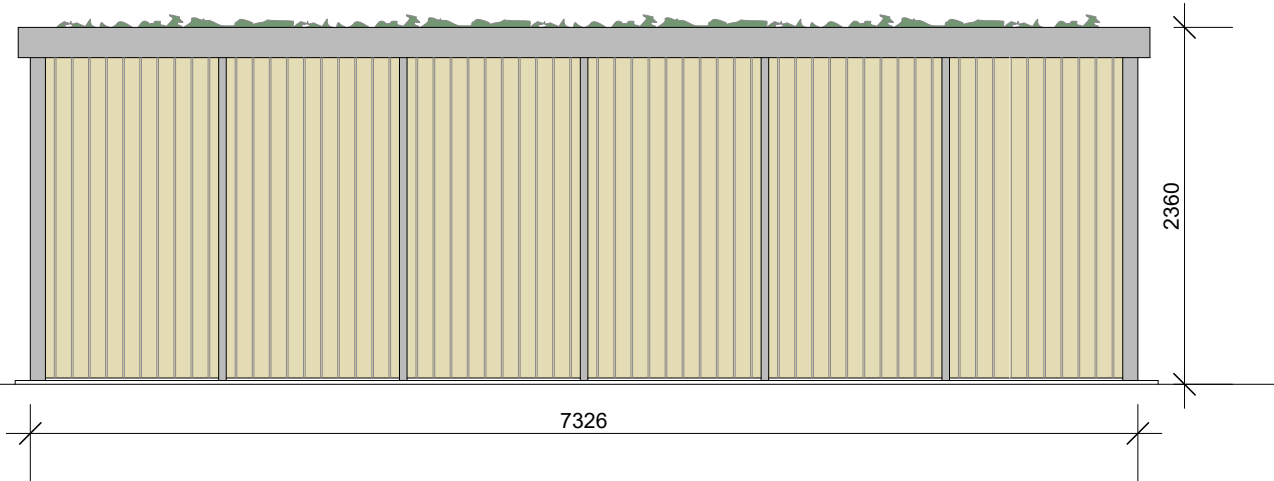
The species of plants within the blanket are shown on the document XF 301 and SB Sedum Species List

Sedum roofs require little to no maintenance and plants are self germinating and replacing. The roofs will be inspected by the appointed Landscape Consultant, DP Landscapes as part of the services set out in the Landscape Management Plan submitted as part of the planning application.

The following drawings have been submitted as part of the planning application:

- BauderGREEN-XF-301-System-Summary
- BauderLtd-ExtensiveGreenRoofSystem-XF301SedumBlanket
- XF301 Sedum Blanket Specification
- XF 301 and SB Sedum Species List

Picture shown is same width as specified but shorter in length



Bike store with Sedum Roof and Secured by Design steel mesh walls supplied by Urban Spec: <https://urbanspec.co.uk/bike-stores-shelters-and-racks/>

Store to accommodate bikes as shown and as described in the DAS Store fixed to concrete slab. Further details can be found on the submitted data sheet.
 Model number is: M18:724 with Sedum Roof. and SBD mesh and fittings.

The Green roofs to the bin store and the bike store will be a Bauder Extensive Sedum blanket on a cold bitumen applied waterproof finish as seen at:

<https://www.bauder.co.uk/green-and-blue-roofs/green-roofs/extensive-lightweight-sedum>

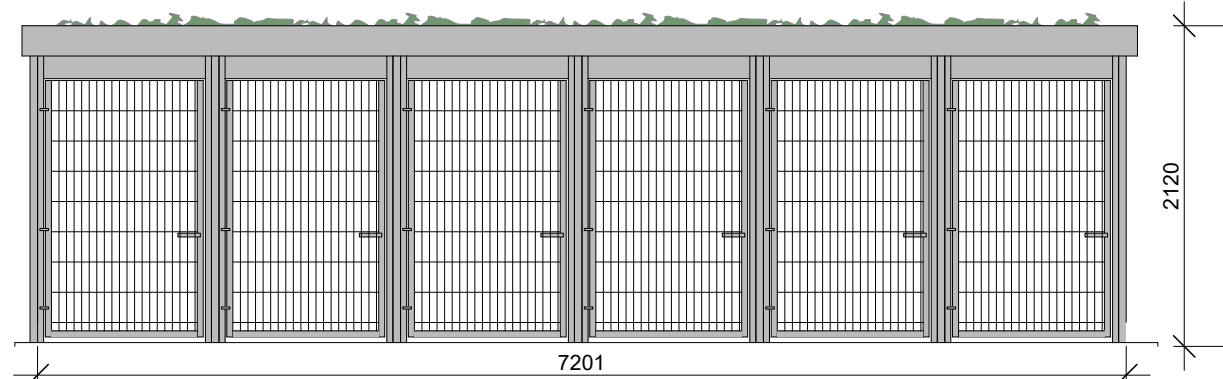
The species of plants within the blanket are shown on the document XF 301 and SB Sedum Species List

Sedum roofs require little to no maintenance and plants are self germinating and replacing. The roofs will be inspected by the appointed Landscape Consultant, DP Landscapes as part of the services set out in the Landscape Management Plan submitted as part of the planning application.

The following drawings have been submitted as part of the planning application:

- BauderGREEN-XF-301-System-Summary
- BauderLtd-ExtensiveGreenRoofSystem-XF301SedumBlanket
- XF301 Sedum Blanket Specification
- XF 301 and SB Sedum Species List

Picture shown is same finish but different layout



Kennedy James Griffiths
 Chartered Architects and Project Managers
 Project
Proposed Apartments
Kelvedon Street, Newport
 T 02920 545100
 10 Victoria Park Court
 516 Cowbridge Road East
 Cardiff
 CF5 1DB

Title	Date
Bike & Bin Store	16 12 2024
Status	Scale @ A3
Planning Application	1:50
Job Number	Revision
1660-PL1-11	CKG

Use figured dimensions where possible. Do not scale for construction purposes.
 This drawing is copyright.

Bin Store