

46 Corporation Road – Cycle Storage

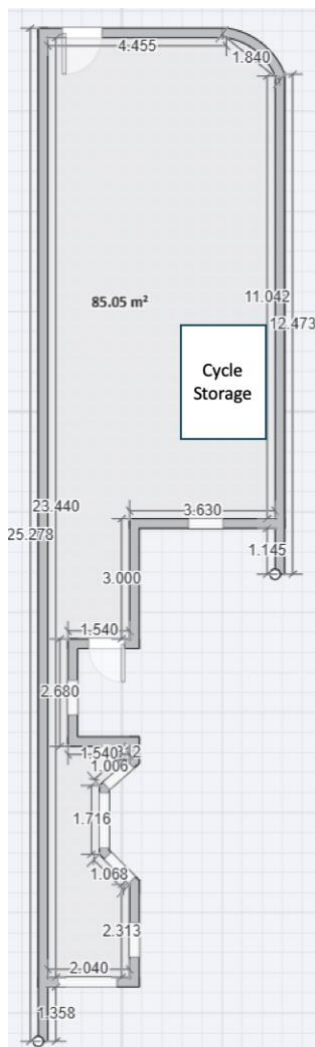
Introduction

This document outlines the storage location and process to be followed by occupiers who will own cycles.

Note: The landlord is not responsible for the security of cycles during the occupiers term.

Storage Location

1no. Cycle Shed will be provided in the rear garden for use by occupiers. The location is provided below. The cycle shed will have a capacity to contain 4no. bicycles.



Below is an example of the cycle shed which will be provided, providing coverage for the bicycles for long term storage.

<https://www.amazon.co.uk/Outdoor-Storage-Galvanized-Bicycles-6-6x6-4ft/dp/B0CT8675VV>



Occupier Cycle Storage Daily Usage Guidelines

Note: The landlord is not responsible for the security of cycles during the occupiers term.

Occupiers will transport bikes to the bike storage via the gate in the rear garden, where there is access to the main road via the private road adjacent to the property.