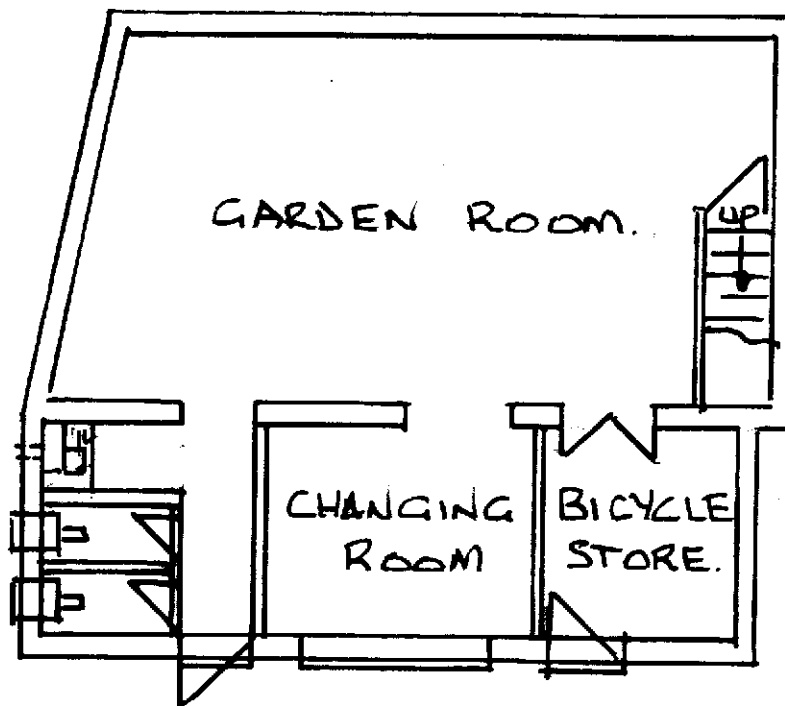


PROPOSED FIRST FLOOR PLAN
FOR RESIDENTIAL USE-ANCILLARY
TO 56, CYRIL STREET, NEWPORT.



PROPOSED GROUND FLOOR PLAN
FOR RESIDENTIAL USE-ANCILLARY
TO 56, CYRIL STREET, NEWPORT.

PROPOSED FLOOR PLAN FOR THE RESIDENTIAL USE OF
GARDEN ROOM-STORE AS ANCILLARY USE TO THE
RESIDENTIAL HOUSE AT 56, CYRIL STREET, NEWPORT.
SCALE 1:100 @ A4 DRG. REF. 22