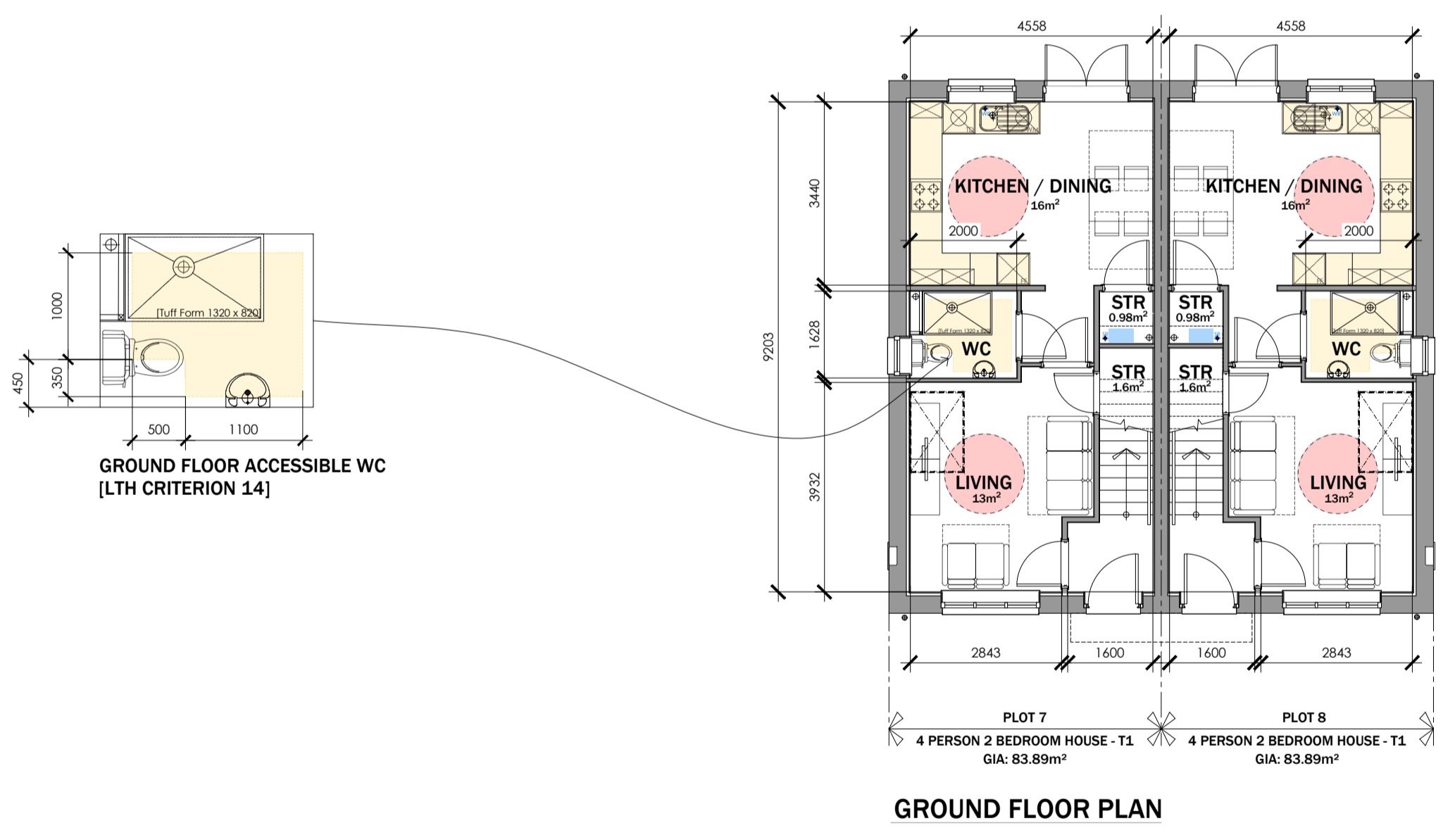
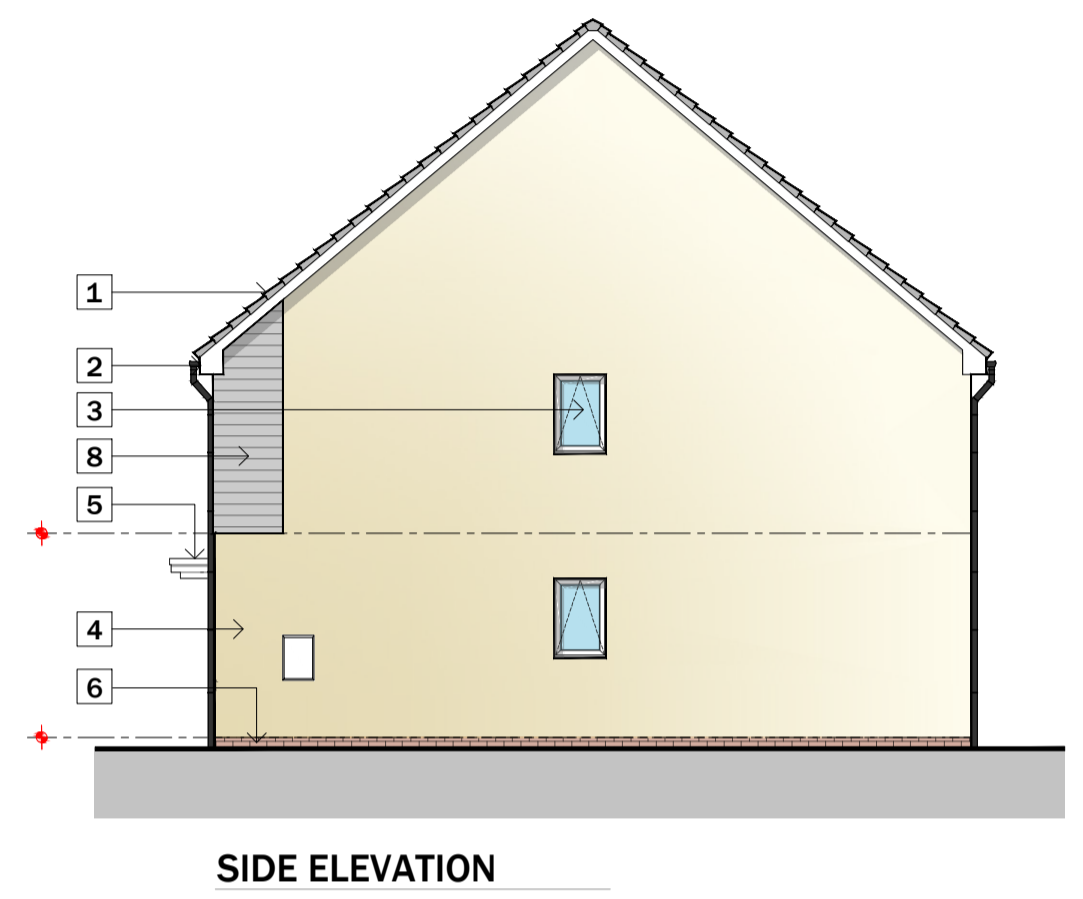
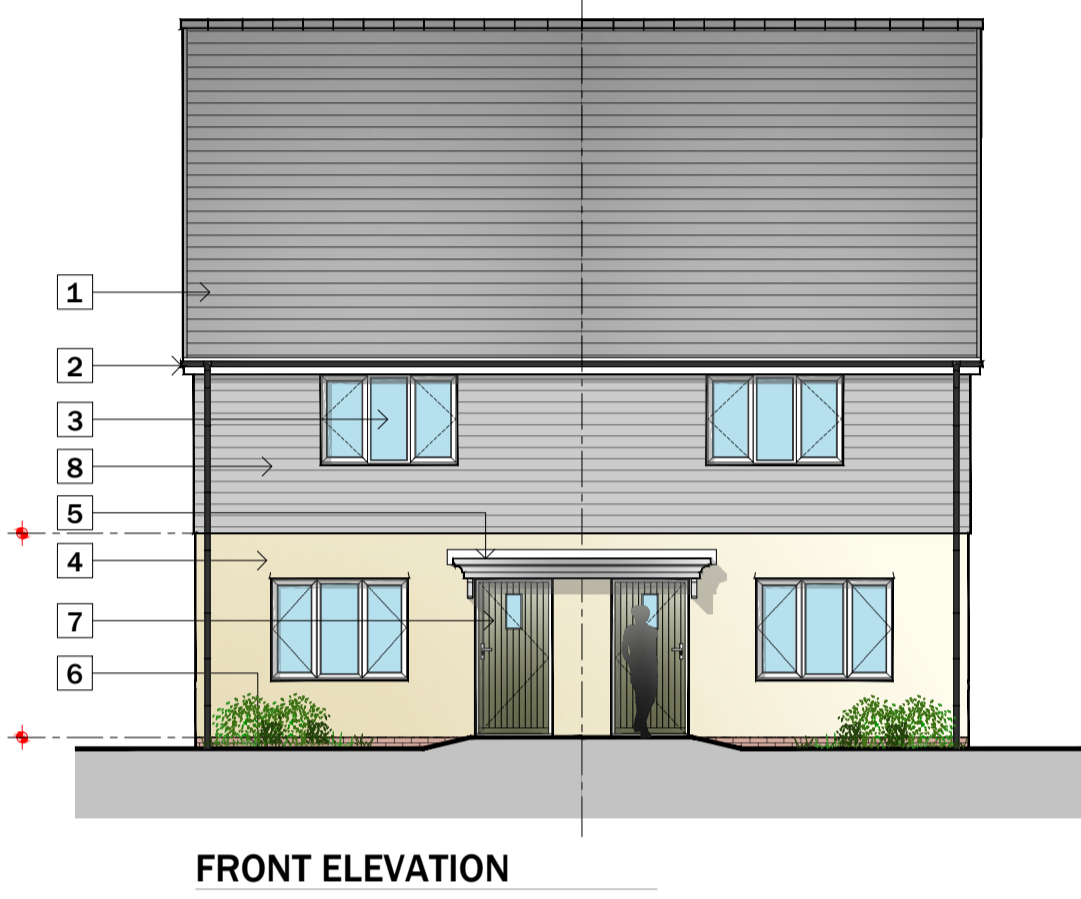
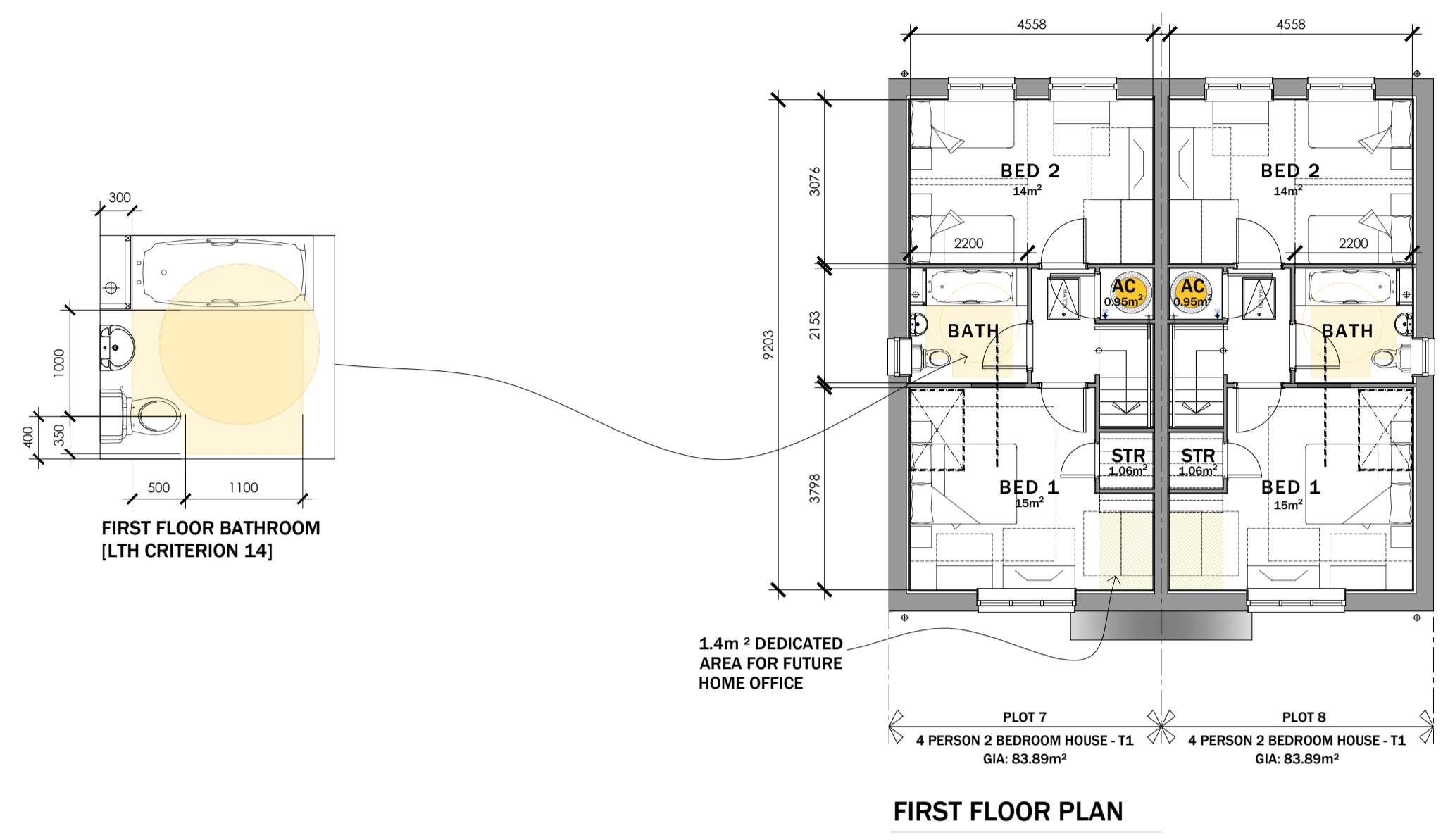


MATERIAL KEY LEGEND

- 1 RECONSTITUTED SLATE ROOF FINISHES - GREY
- 2 WHITE UPVC FASCIAS, SOFFITES AND BARGEBOARDS WITH BLACK RAINWATER GOODS
- 3 ANTHRACITE GREY UPVC DOUBLE GLAZED WINDOWS AND REAR DOOR UNITS
- 4 THRU COLOURED RENDER SYSTEM AS MAIN FINISHES - COLOUR TO SUIT PLOTS
- 5 GRP PORCH CANOPY OVER
- 6 FACING BRICKWORK UP TO DPC LEVEL
- 7 GRP COMPOSITE FRONT ENTRANCE DOORS COLOUR: TBC
- 8 ANTHRACITE GREY FIBRE CEMENT HORIZONTAL BOARDING DETAIL
- 9 LOCATION OF BIRD BOX - REFER TO ECOLOGISTS REPORT
- 10 LOCATION OF BAT BOX - REFER TO ECOLOGISTS REPORT
- 11 PV PANELS - EXACT LOCATIONS TO SUIT DWELLINGS ORIENTATION TO SOUTH

Do not scale from this drawing. The users of this drawing shall check all dimensions and specifications against the original drawings and specifications issued by LeTrucco Design. This drawing is copyright. It must not be reproduced, stored in a retrieval system or transmitted in any form or by any means, without prior permission of LeTrucco Design.



STORAGE SCHEDULE:

4P2B HOUSE TYPE 1

GROUND FLOOR:

STORE: 0.98m²

UP STAIRS: 1.40m²

FIRST FLOOR:

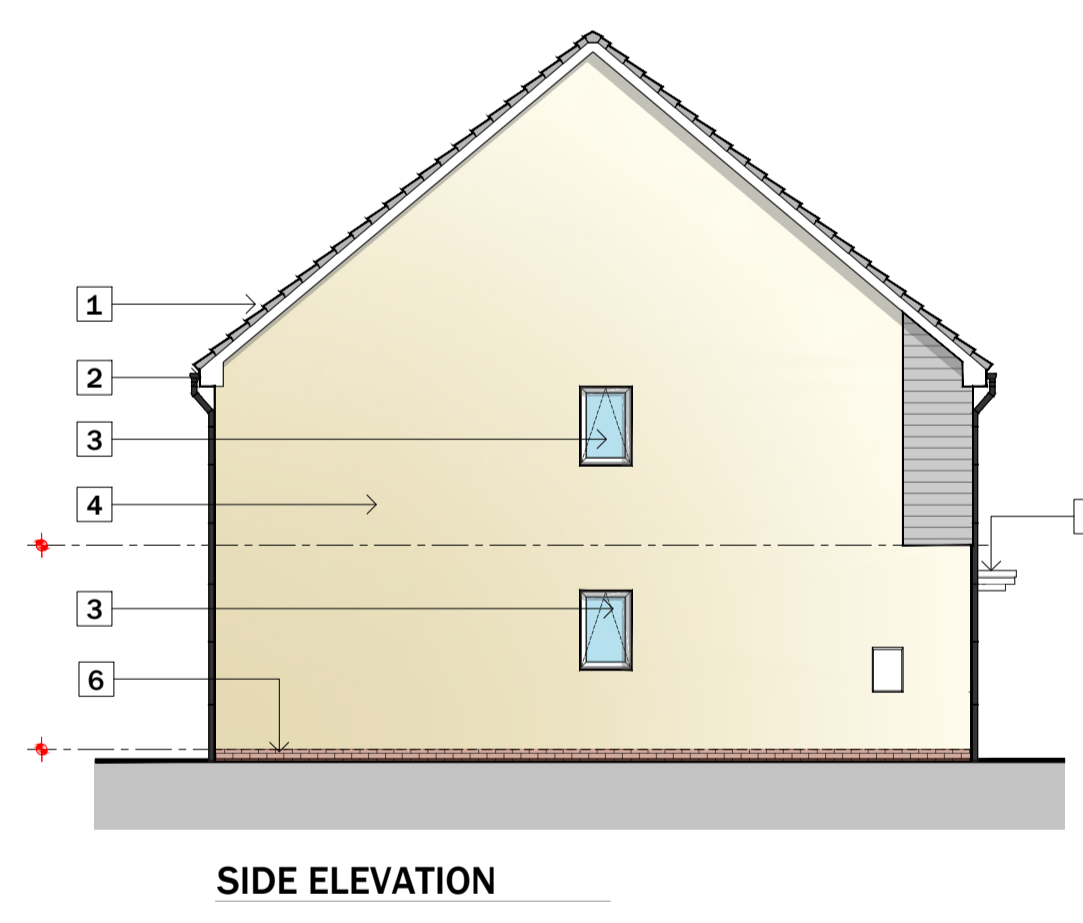
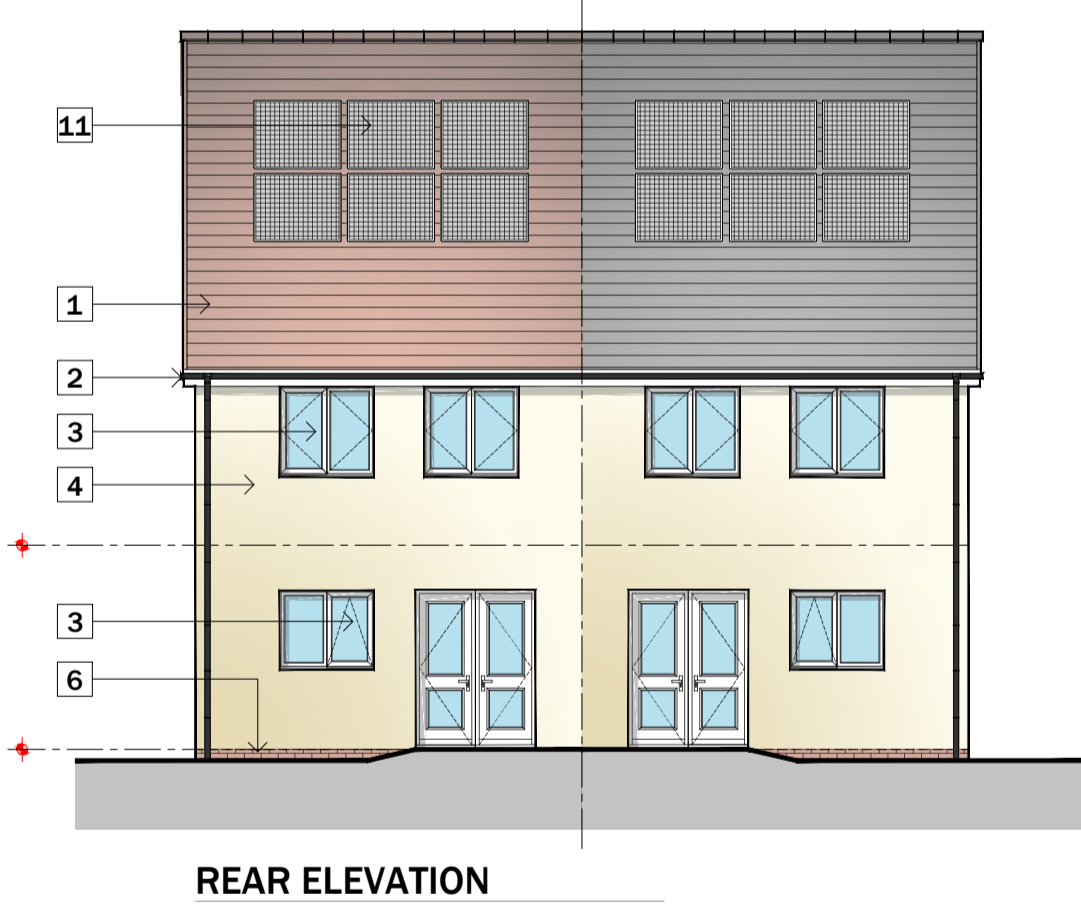
AC: 0.95m²

STORE: 1.06m²

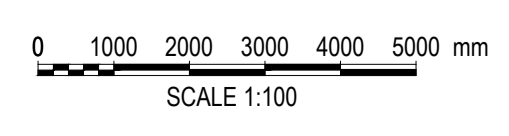
TOTAL STORAGE PROVIDED - 4.59m²

TOTAL STORAGE REQUIRED - 2.5m²

TOTAL STORAGE EXCESS - 2.09m²



4P 2B HOUSE TYPE 1 -
Plots 7 - 8
G.I.A = 83.89m² / 902.98 ft²



Revisions

| Drawing No | Revision | Scale | Date | Checked |
|------------------------|------------------------------|------------|--------|---------|
| LT2413.04.101 | @ A1 | 1:100 @ A1 | Nov 24 | |
| Client | Revision | Scale | Date | Checked |
| Wellspring / Bron Afon | | | | |
| Job Title | Drawing Title | | | |
| Traston Lane, Newport | 4P 2B House Type - PLOTS 7-8 | | | |

Drawing Purpose
 PLANNING

LeTruccodesign
 ARCHITECTURE

Suite 7, 35 Stow Park Circle
 Newport, NP20 4HF

Tel: 07710390800 / 07710390801
 info@letruccodesign.co.uk
 www.letruccodesign.co.uk