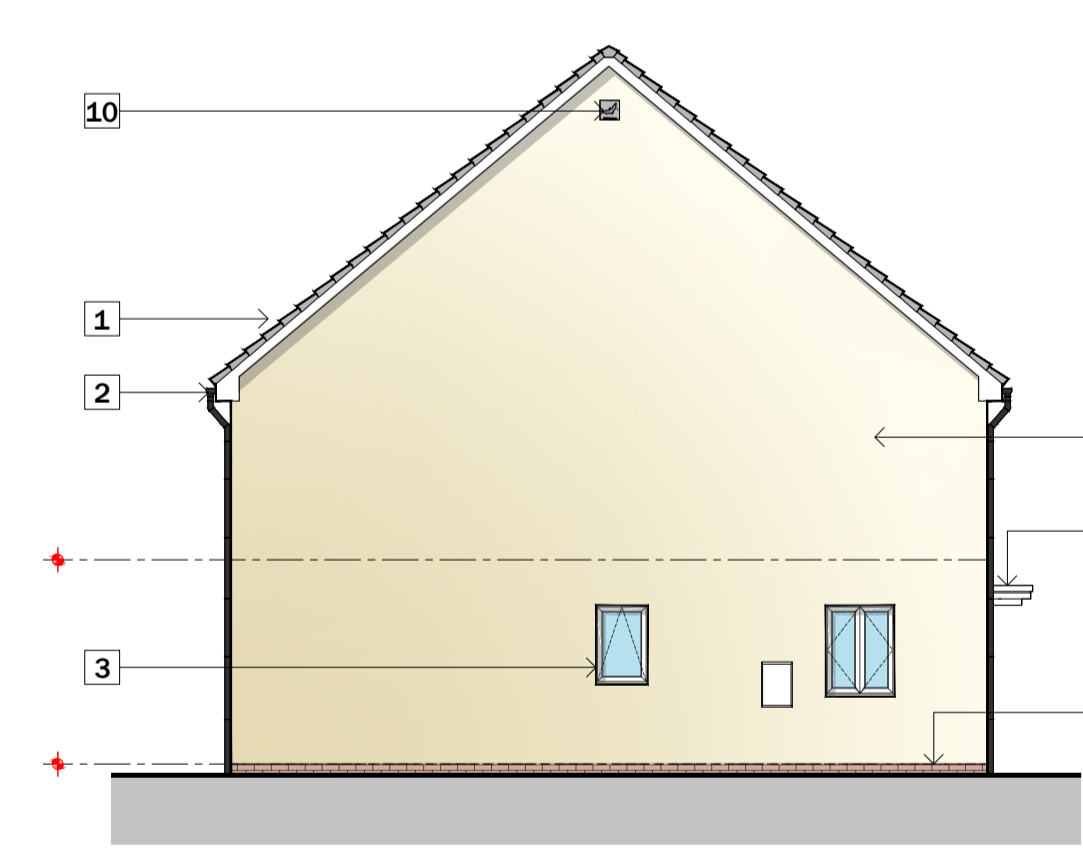
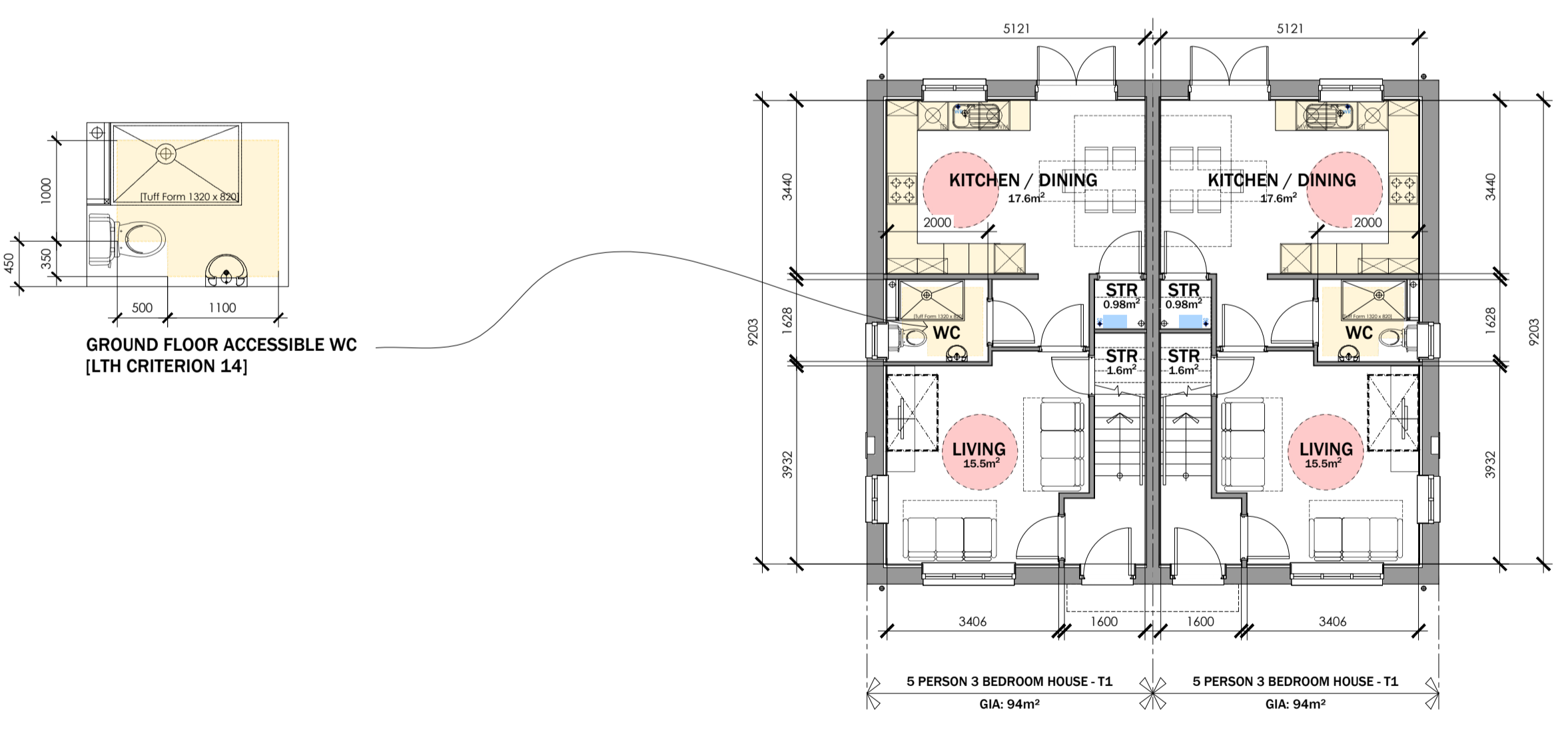
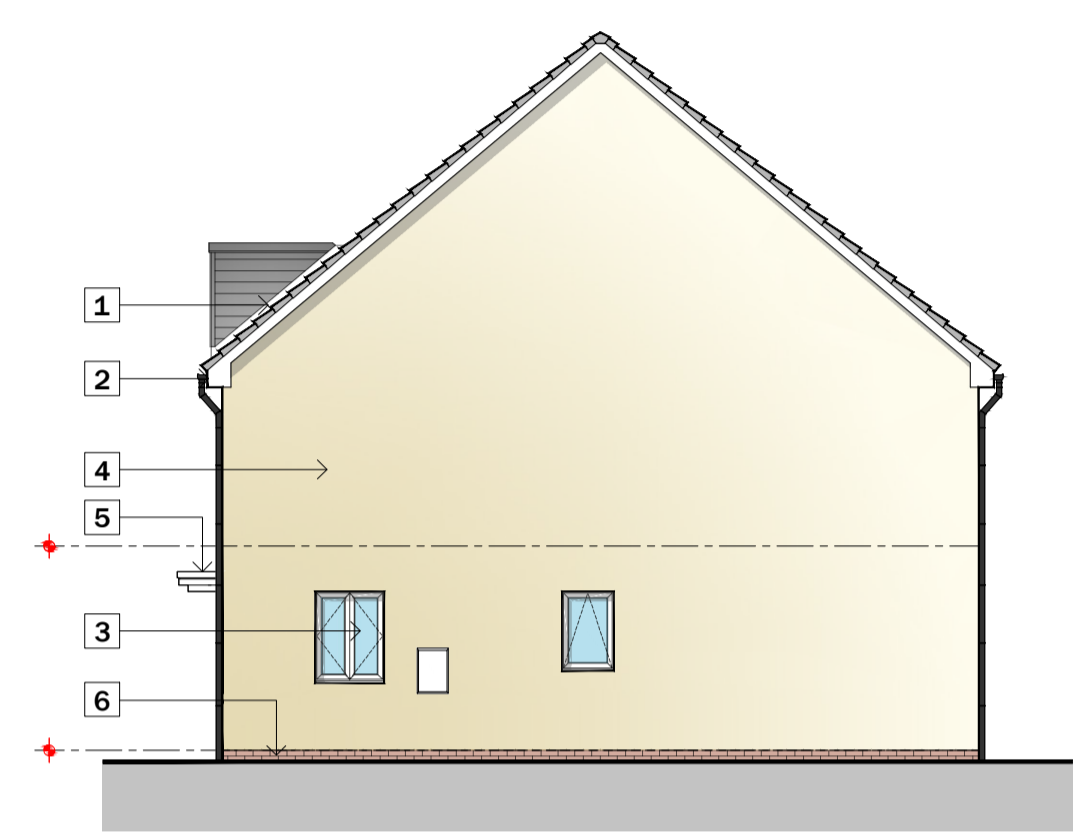
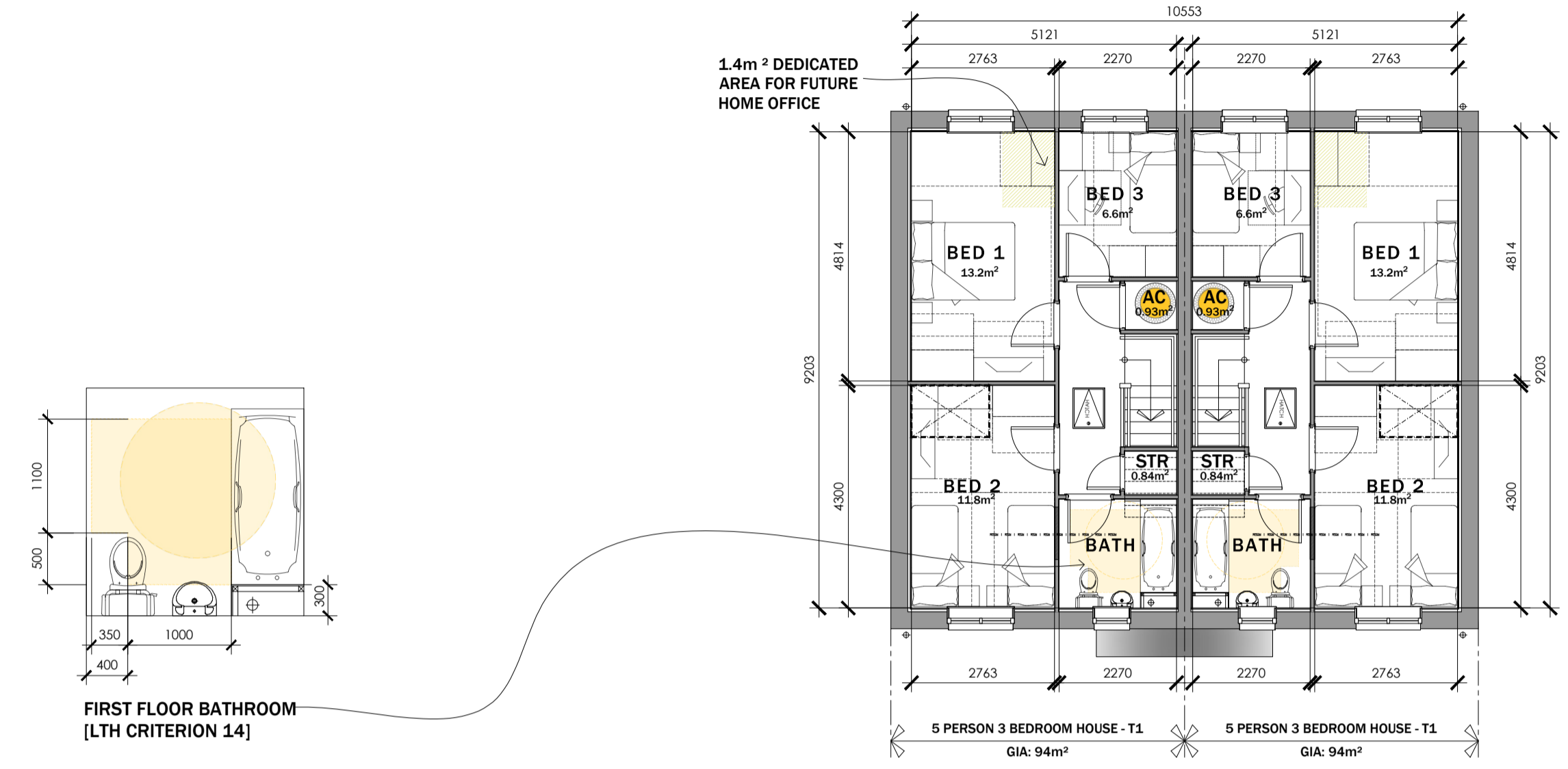


MATERIAL KEY LEGEND

- 1 RECONSTITUTED SLATE ROOF FINISHES - GREY
- 2 WHITE UPVC FASCIAS, SOFFITES AND BARGEBOARDS WITH BLACK RAINWATER GOODS
- 3 ANTHRACITE GREY UPVC DOUBLE GLAZED WINDOWS AND REAR DOOR UNITS
- 4 THRU COLOURED RENDER SYSTEM AS MAIN FINISHES - COLOUR TO SUIT PLOTS
- 5 GRP PORCH CANOPY OVER
- 6 FACING BRICKWORK UP TO DPC LEVEL
- 7 GRP COMPOSITE FRONT ENTRANCE DOORS COLOUR: TBC
- 8 ANTHRACITE GREY FIBRE CEMENT HORIZONTAL BOARDING DETAIL
- 9 LOCATION OF BIRD BOX - REFER TO ECOLOGISTS REPORT
- 10 LOCATION OF BAT BOX - REFER TO ECOLOGISTS REPORT
- 11 PV PANELS - EXACT LOCATIONS TO SUIT DWELLINGS ORIENTATION TO SOUTH

Do not scale from this drawing. The users of this drawing shall check all dimensions and details against the original design. This drawing is copyright. It must not be reproduced or used in any way without prior permission of LeTrucco Design.



STORAGE SCHEDULE:

5P3B HOUSE TYPE 1

GROUND FLOOR:

STORE: 0.98M²

U/S STAIRS: 1.60M²

FIRST FLOOR:

STORE: 0.84M²

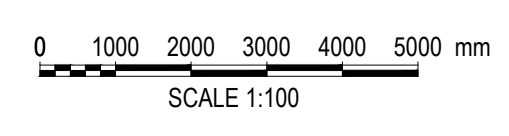
AC: 0.93M²

TOTAL STORAGE PROVIDED - 4.35M²

TOTAL STORAGE REQUIRED - 2.5M²

TOTAL STORAGE EXCESS - 1.85M²

5P 3B HOUSE TYPE 1
 Plots 5 - 6 + 9 - 10
 G.I.A = 94M² / 1011.81 ft²



Revisions

| Revision | Scale | Date | Checked |
|----------|------------|--------|---------|
| 1 | 1:100 @ A1 | Nov 24 | |

Drawing Purpose
 PLANNING

Drawing No
 LT2413.04.102

Client
 Welling/ Bron Afon

Job Title
 5P 3B House Types

Traston Lane, Newport

Suite 7, 35 Stow Park Circle
 Newport, NP20 4HF

Tel: 07710390800 / 07710390801
 info@letruccodesign.co.uk
 www.letruccodesign.co.uk