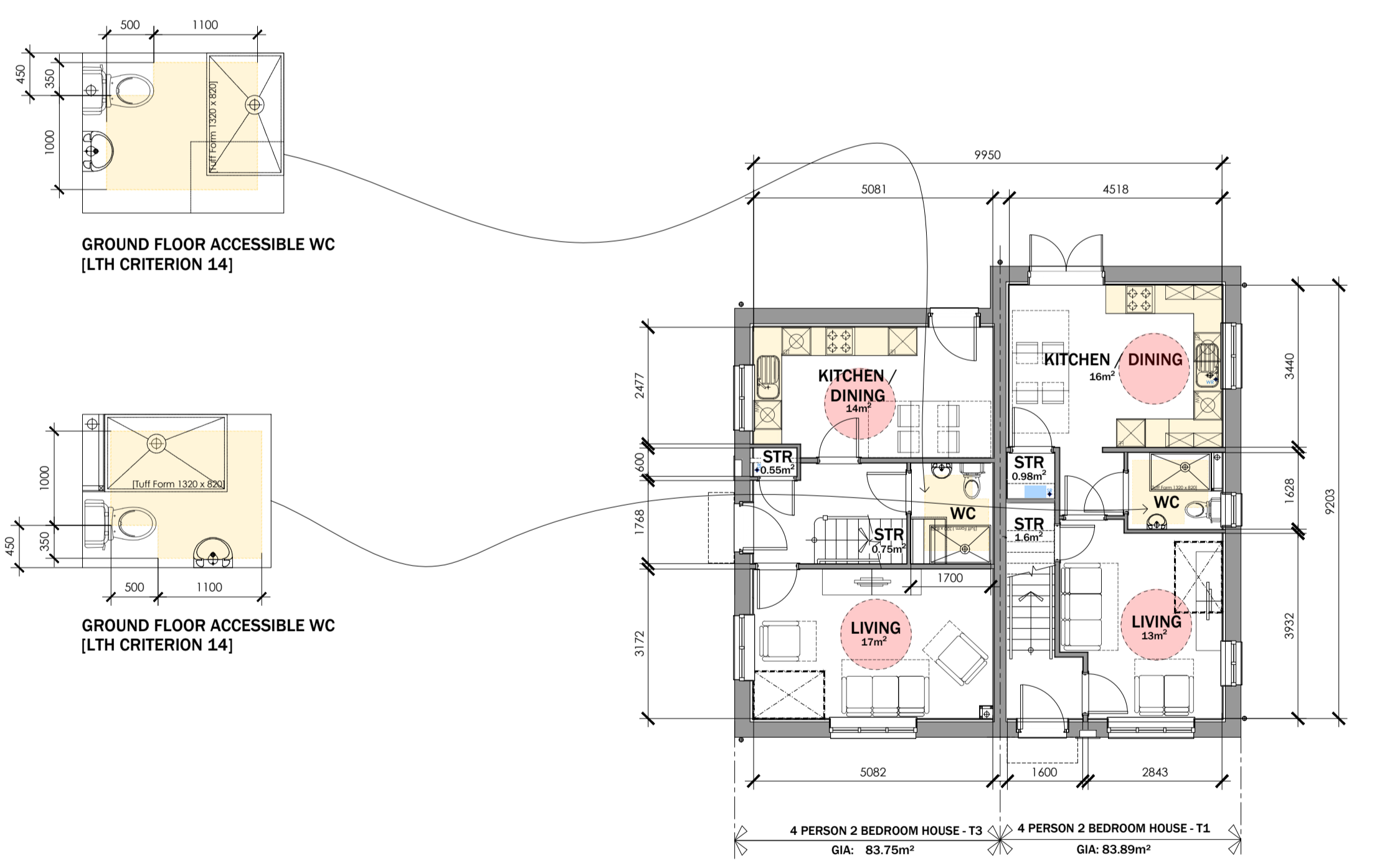
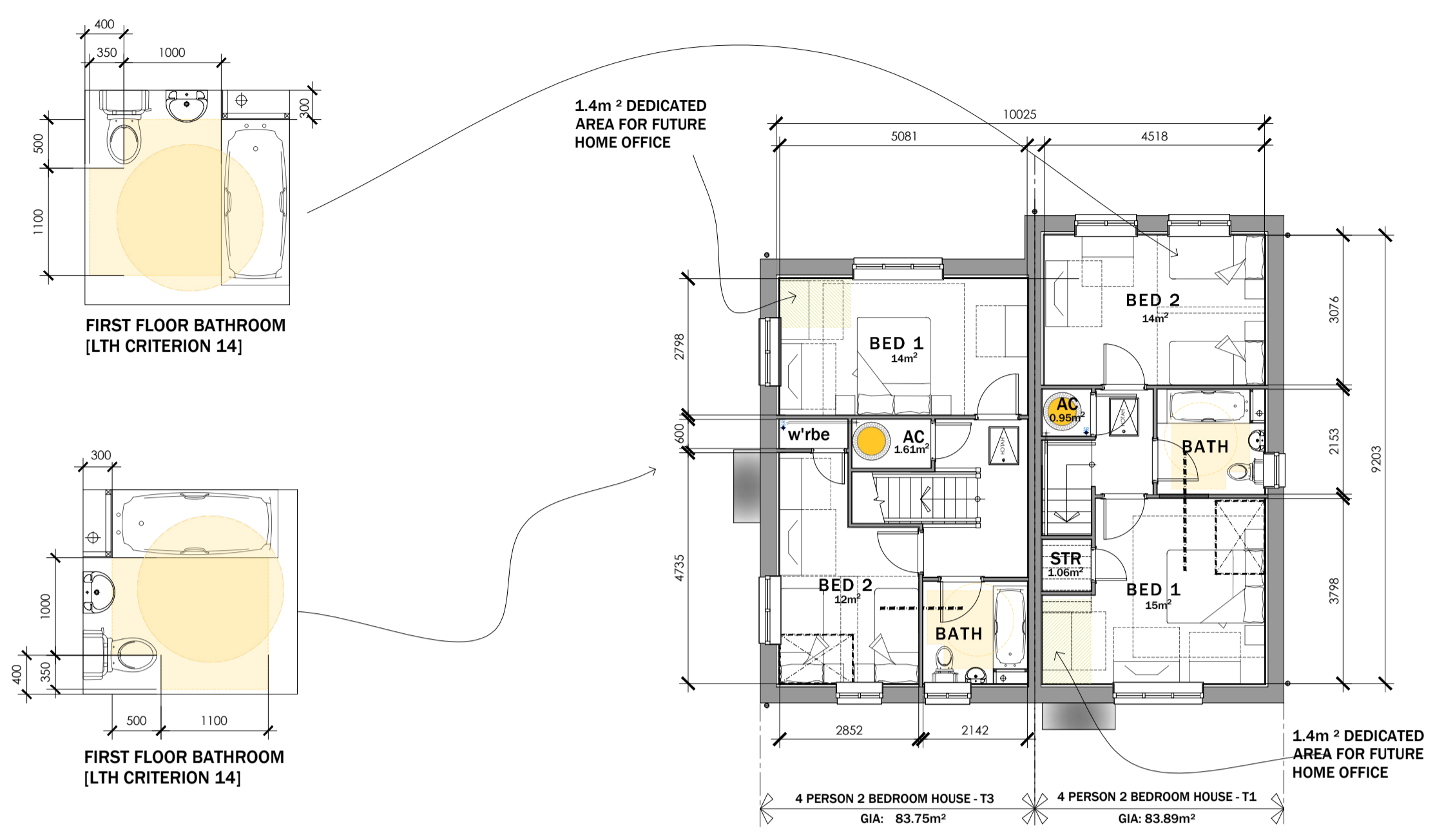


MATERIAL KEY LEGEND

- 1 RECONSTITUTED SLATE ROOF FINISHES - GREY
- 2 WHITE UPVC FASCIAS, SOFFITES AND BARGEBOARDS WITH BLACK RAINWATER GOODS
- 3 ANTHRACITE GREY UPVC DOUBLE GLAZED WINDOWS AND REAR DOOR UNITS
- 4 THRU COLOURED RENDER SYSTEM AS MAIN FINISHES - COLOUR TO SUIT PLOTS
- 5 GRP PORCH CANOPY OVER
- 6 FACING BRICKWORK UP TO DPC LEVEL
- 7 GRP COMPOSITE FRONT ENTRANCE DOORS COLOUR - TRC
- 8 ANTHRACITE GREY FIBRE CEMENT HORIZONTAL BOARDING DETAIL
- 9 LOCATION OF BIRD BOX - REFER TO ECOLOGISTS REPORT
- 10 LOCATION OF BAT BOX - REFER TO ECOLOGISTS REPORT
- 11 PV PANELS - EXACT LOCATIONS TO SUIT DWELLINGS ORIENTATION TO SOUTH

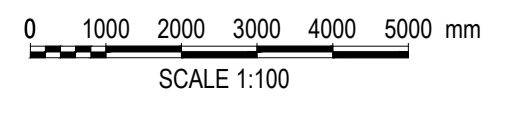
Do not scale from this drawing. The users of this drawing shall check all dimensions and specifications against the original drawings and specifications and shall be responsible for any omissions to LeTrucco Design. This drawing is copyright. It must not be reproduced, stored in a retrieval system or transmitted in any form or by any means without prior permission of LeTrucco Design.



STORAGE SCHEDULE:

4P2B HOUSE TYPE 1	4P2B HOUSE TYPE 3
GROUND FLOOR:	GROUND FLOOR:
STORE: 0.98M ²	U/S STAIRS: 0.75M ²
U/S STAIRS: 1.60M ²	STORE: 0.55M ²
FIRST FLOOR:	FIRST FLOOR:
AC: 0.95M ²	AC: 1.61M ²
STORE: 1.06M ²	
TOTAL STORAGE PROVIDED - 4.59M ²	TOTAL STORAGE PROVIDED - 2.91M ²
TOTAL STORAGE REQUIRED - 2.5M ²	TOTAL STORAGE REQUIRED - 2.5M ²
TOTAL STORAGE EXCESS - 2.09M ²	TOTAL STORAGE EXCESS - 0.41M ²

4P 2B HOUSE TYPES 1 + 3
Plots 13 - 14
G.I.A 83.75M² / 901.48 ft²
83.89M² / 902.99 ft²



Revisions

Revision	Scale	Date	Checked
1	1:100 @ A1	Nov 24	

Drawing Purpose
 PLANNING

Client	Wellspring / Bron Afon
Drawing No	LT2413.04.104
Job Title	4P 2B House Types - 13-14
	Traston Lane, Newport

LeTruccodesign
 ARCHITECTURE

Suite 7, 35 Stow Park Circle
 Newport, NP20 4HF

Tel: 07710390800 / 07710390801
 info@letruccodesign.co.uk
 www.letruccodesign.co.uk