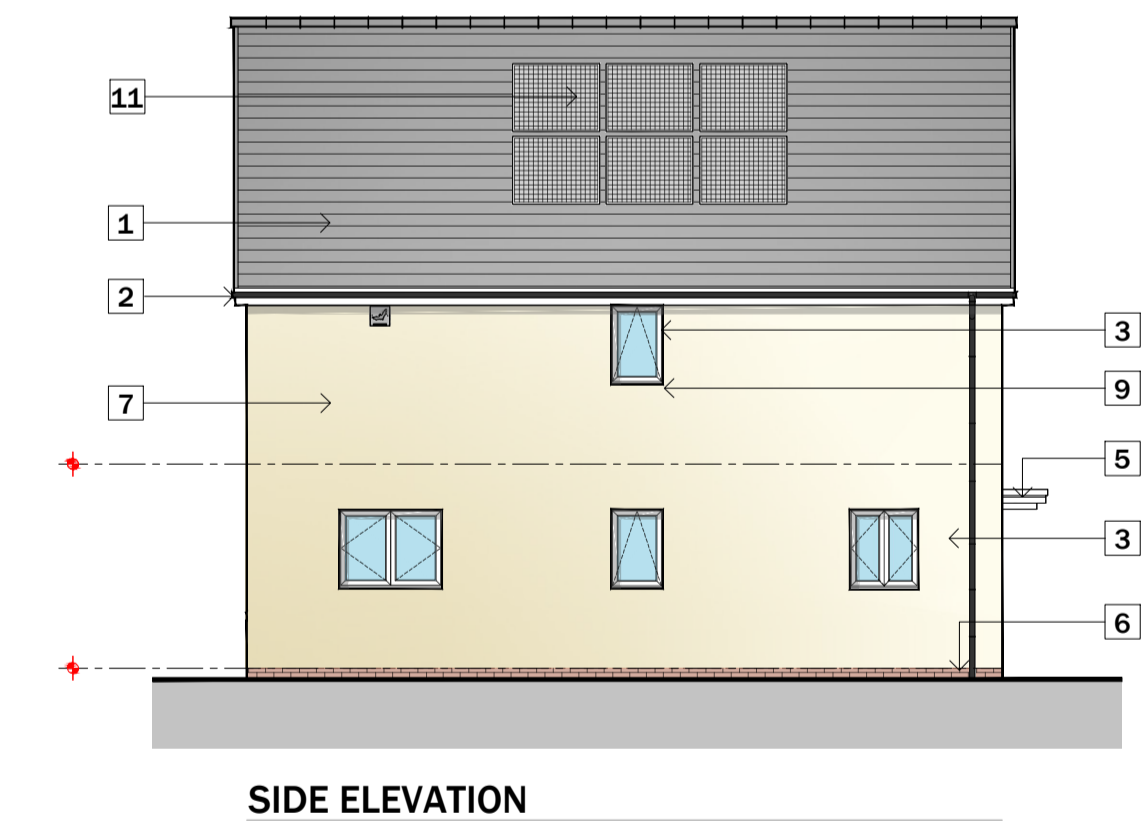
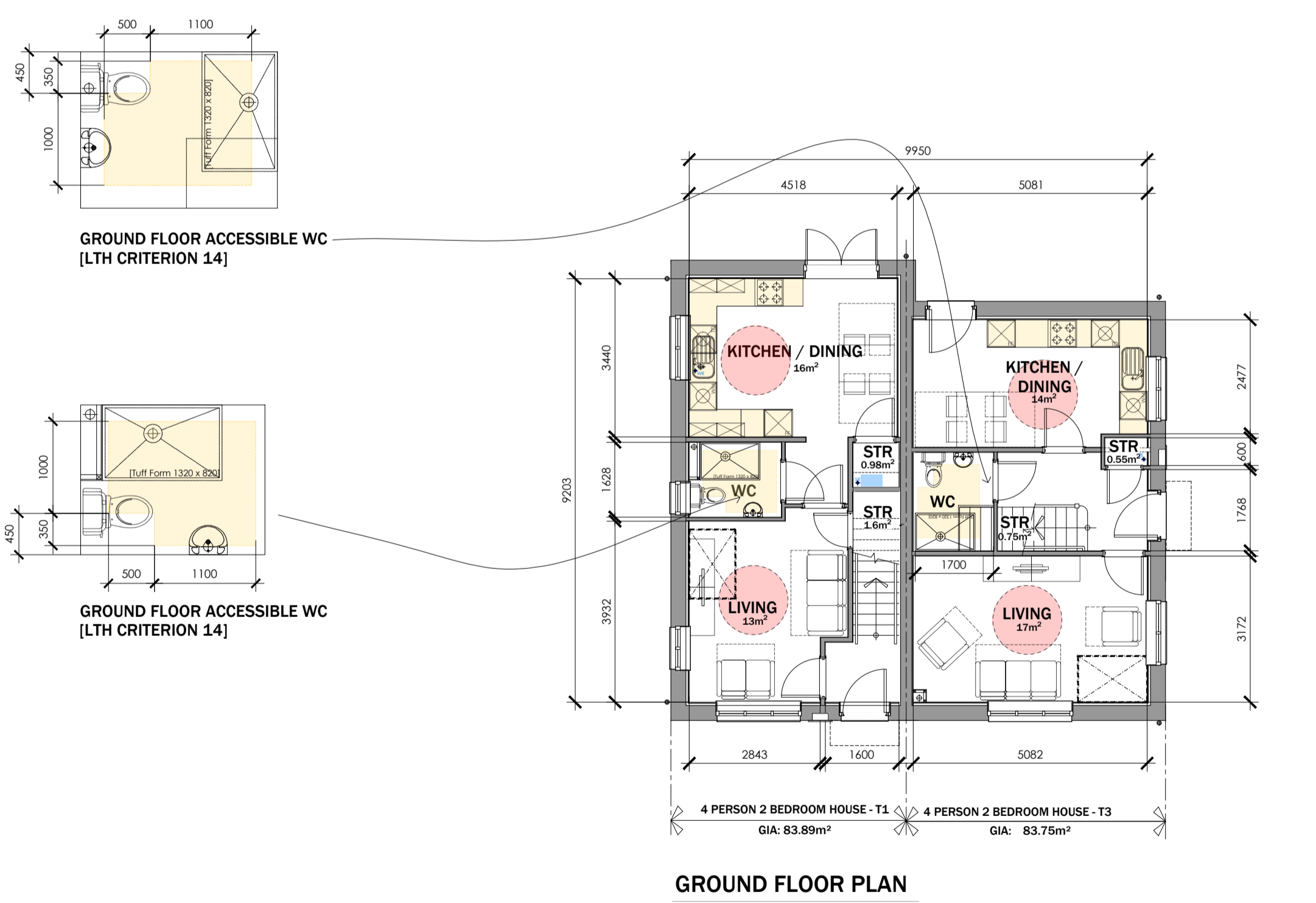
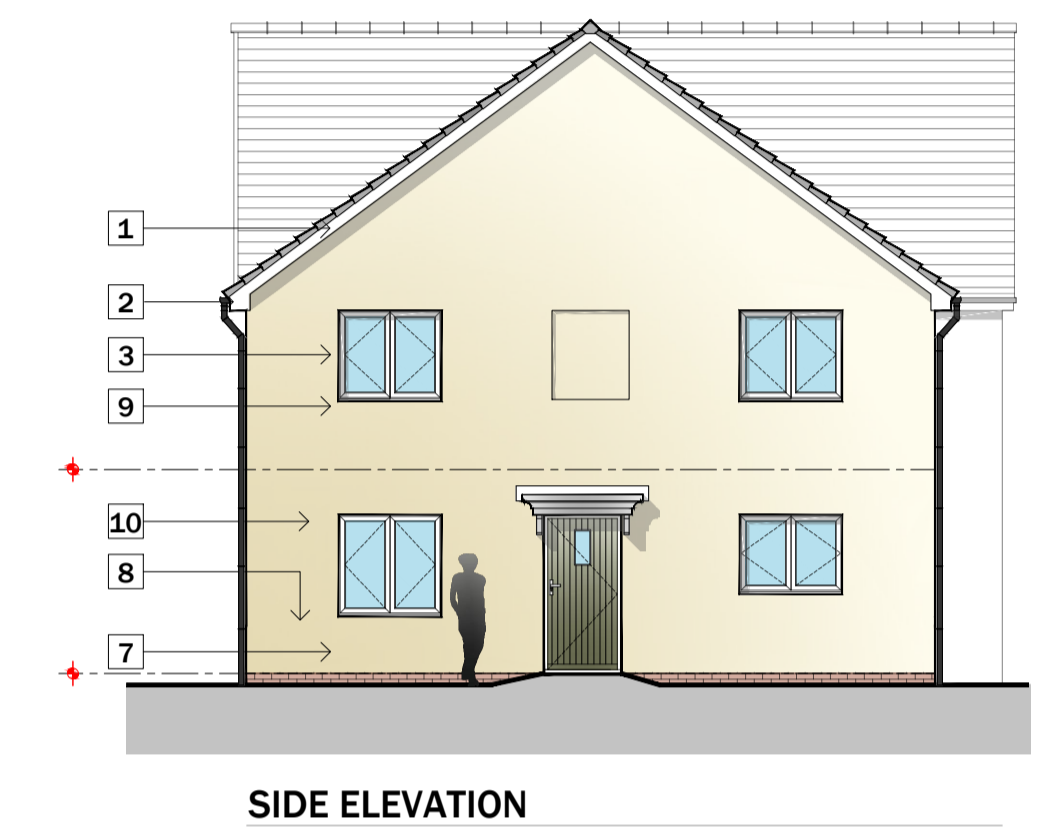
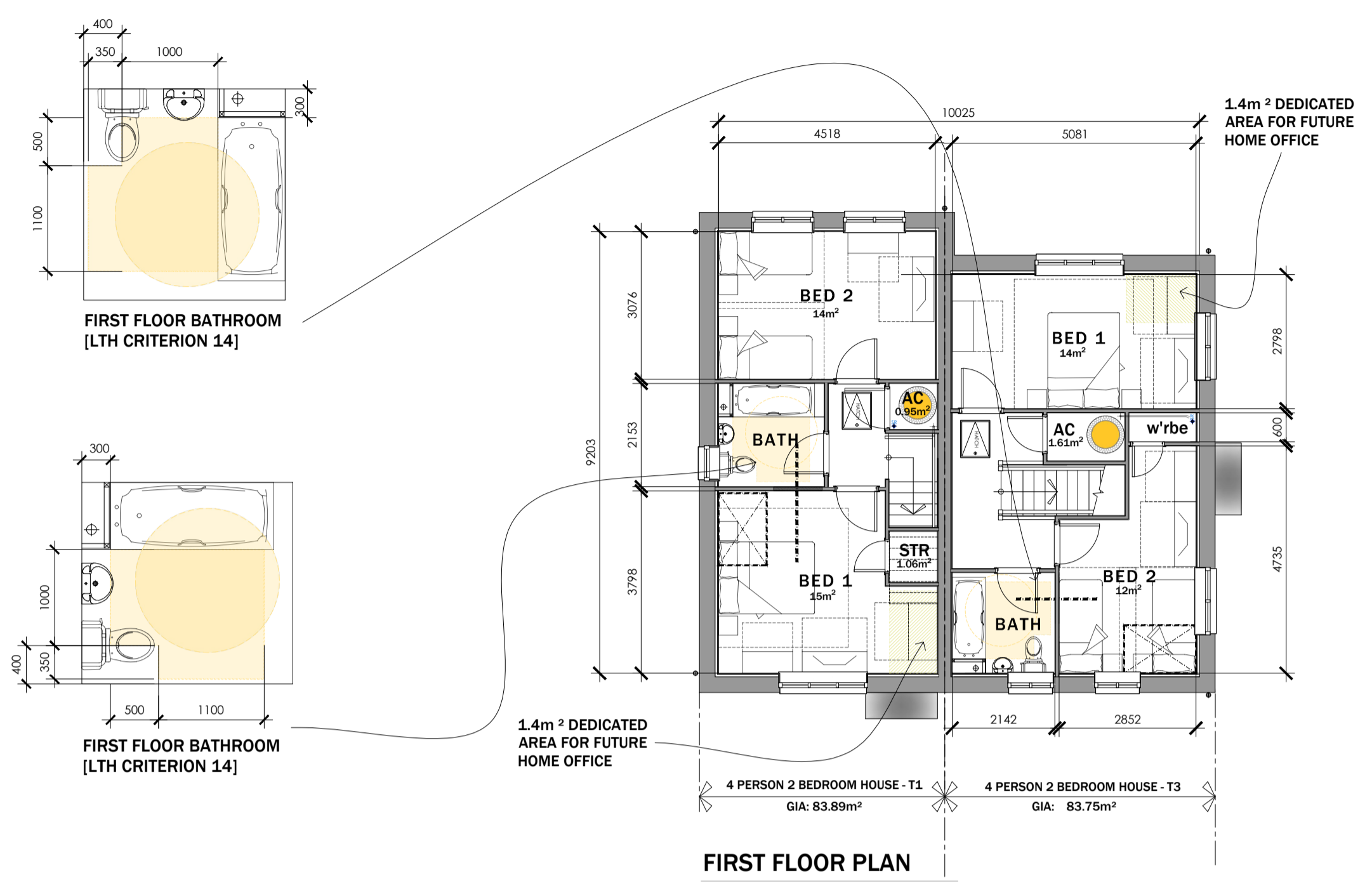


MATERIAL KEY LEGEND

- 1 RECONSTITUTED SLATE ROOF FINISHES - GREY
- 2 WHITE UPVC FASCIAS, SOFFITES AND BARGEBOARDS WITH BLACK RAINWATER GOODS
- 3 ANTHRACITE GREY UPVC DOUBLE GLAZED WINDOWS AND REAR DOOR UNITS
- 4 THRU COLOURED RENDER SYSTEM AS MAIN FINISHES - COLOUR TO SUIT PLOTS
- 5 GRP PORCH CANOPY OVER
- 6 FACING BRICKWORK UP TO DPC LEVEL
- 7 GRP COMPOSITE FRONT ENTRANCE DOORS COLOUR - TRC
- 8 ANTHRACITE GREY FIBRE CEMENT HORIZONTAL BOARDING DETAIL
- 9 LOCATION OF BIRD BOX - REFER TO ECOLOGISTS REPORT
- 10 LOCATION OF BAT BOX - REFER TO ECOLOGISTS REPORT
- 11 PV PANELS - EXACT LOCATIONS TO SUIT DWELLINGS ORIENTATION TO SOUTH

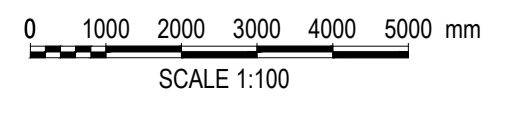
Do not scale from this drawing. The users of this drawing shall check all dimensions and details against the drawings and specifications issued by the client and without prior permission of LeTrucco Design.



STORAGE SCHEDULE:

4P2B HOUSE TYPE 1	4P2B HOUSE TYPE 2
GROUND FLOOR:	GROUND FLOOR:
STORE: 0.98M ²	U/S STAIRS: 0.75M ²
U/S STAIRS: 1.60M ²	STORE: 0.55M ²
FIRST FLOOR:	FIRST FLOOR:
AC: 0.95M ²	AC: 1.61M ²
STORE: 1.08M ²	
TOTAL STORAGE PROVIDED - 4.59M ²	TOTAL STORAGE PROVIDED - 2.91M ²
TOTAL STORAGE REQUIRED - 2.5M ²	TOTAL STORAGE REQUIRED - 2.5M ²
TOTAL STORAGE EXCESS - 2.09M ²	TOTAL STORAGE EXCESS - 0.41M ²

4P 2B HOUSE TYPE 4 - Plots 15 - 16
 G.I.A 83.75M² / 901.48 ft²
 83.89M² / 902.99 ft²



Revisions

Revision	Scale	Date	Checked
1	1:100 @ A1	Nov 24	

Drawing Purpose
 PLANNING

Drawing No	LT2413.04.105
Client	Wellspring / Bron Afon
Drawing Title	4P 2B House Types - 15-16
Job Title	Traston Lane, Newport

LeTruccodesign
 ARCHITECTURE

Suite 7, 35 Stow Park Circle
 Newport, NP20 4HF

Tel: 07710390800 / 07710390801
 info@letruccodesign.co.uk
 www.letruccodesign.co.uk