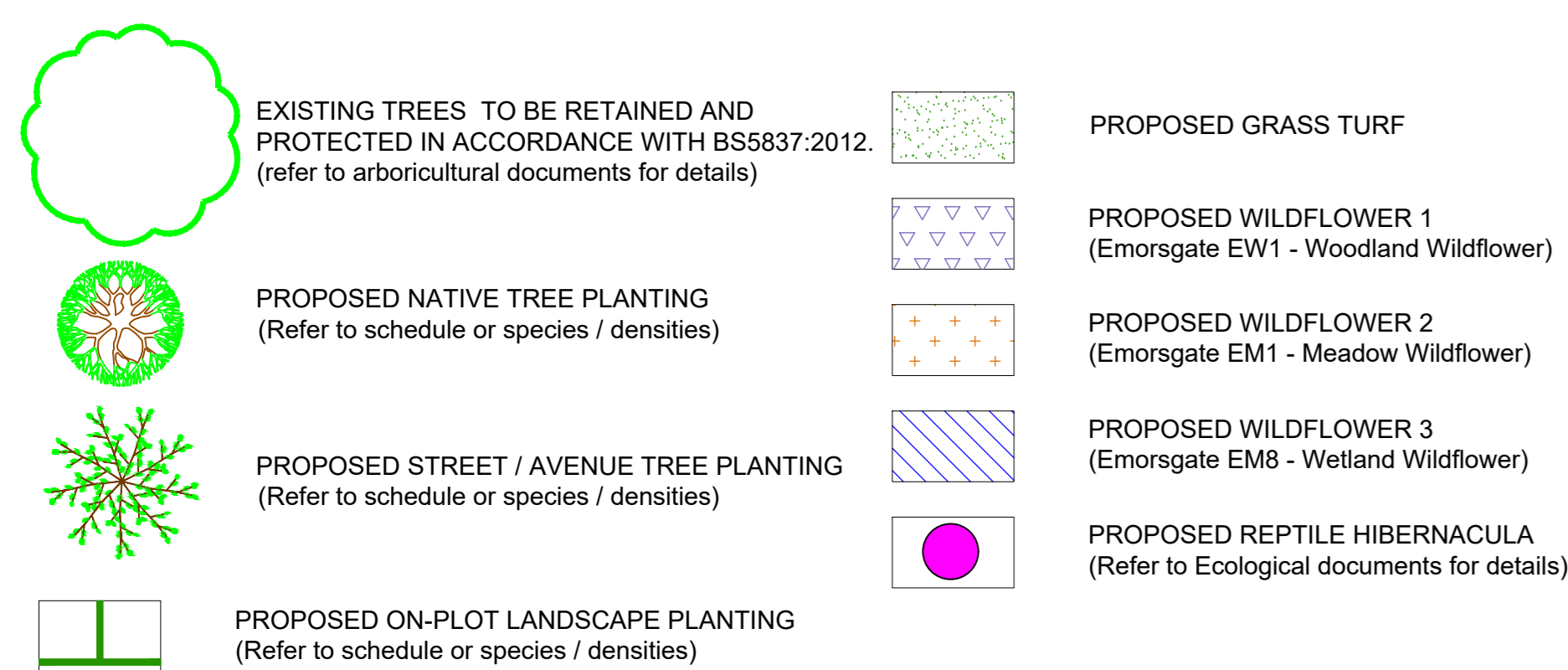
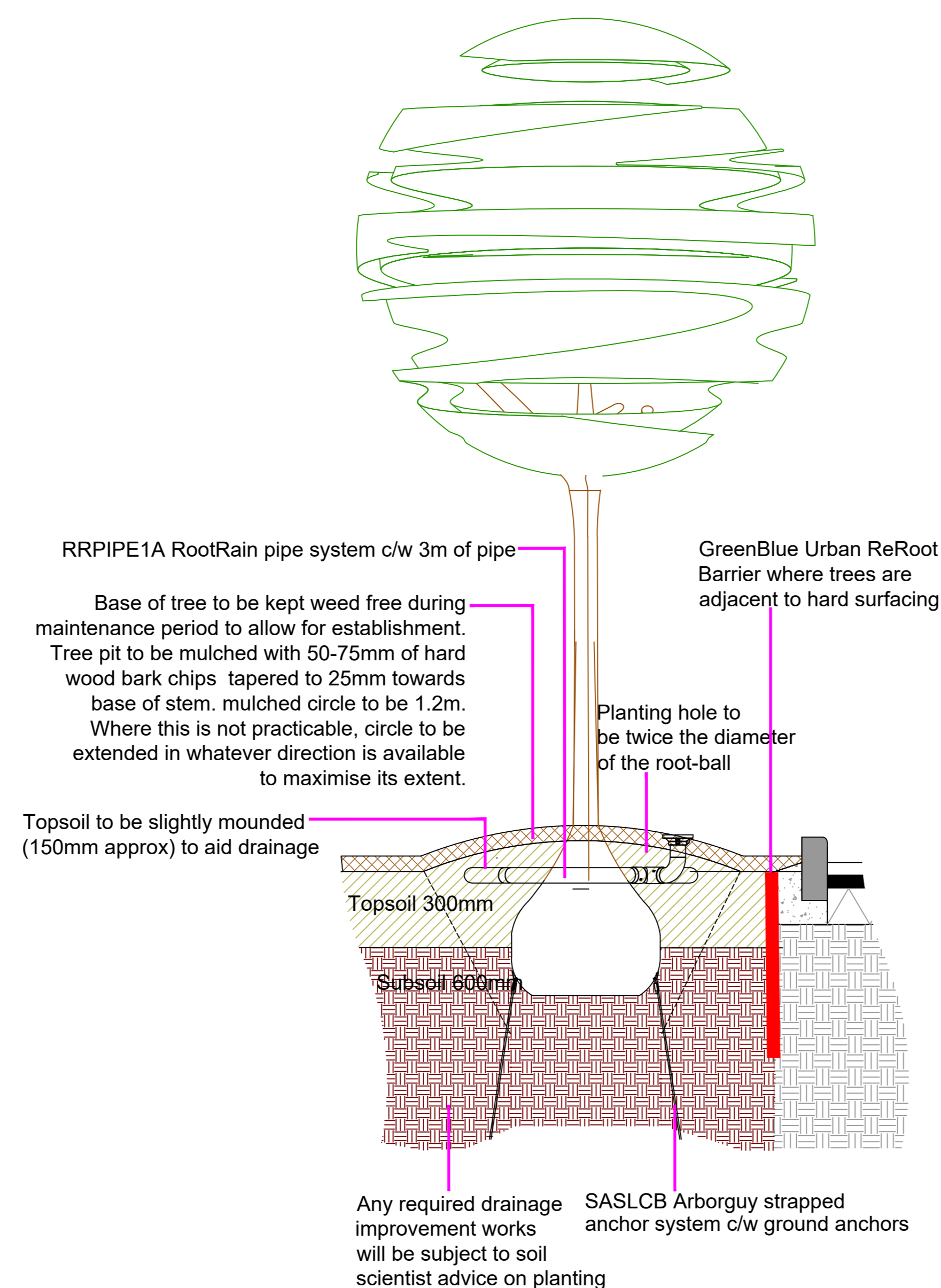


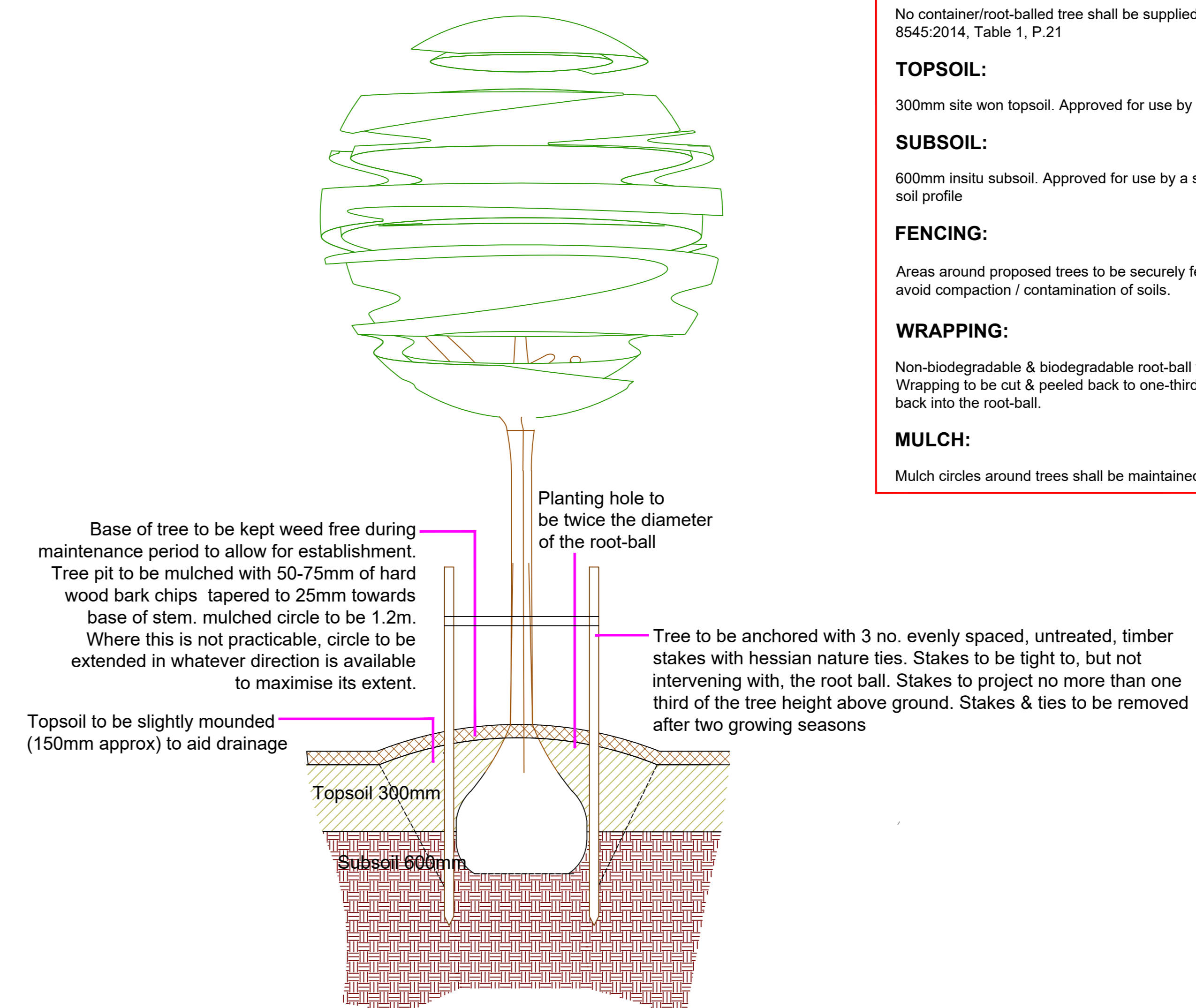
**SOFT LANDSCAPE KEY**



**TREE PIT DETAIL 1 - TREES ADJACENT TO HARD SURFACING**



**TREE PIT DETAIL 2 - NATIVE TREES IN SOFT LANDSCAPE**



**TREE PIT NOTES:**  
 No container/root-balled tree shall be supplied and planted until it has been found to be compliant with BS 8545:2014, Table 1, P.21

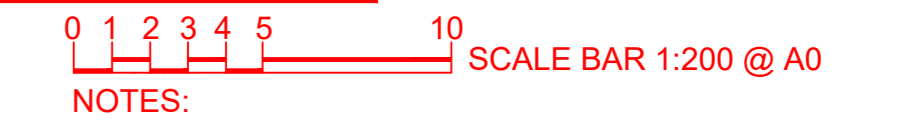
**TOPSOIL:**  
 300mm site won topsoil. Approved for use by a suitably qualified soil scientist.

**SUBSOIL:**  
 600mm insitu subsoil. Approved for use by a suitably qualified soil scientist. Backfilling to reinstate the pre-existing soil profile

**FENCING:**  
 Areas around proposed trees to be securely fenced prior to commencement of construction operations on site to avoid compaction / contamination of soils.

**WRAPPING:**  
 Non-biodegradable & biodegradable root-ball wrappings to be removed. Where root-ball collapse is a concern, Wrapping to be cut & peeled back to one-third root-ball height. Peeled wrapping to be removed and not folded back into the root-ball.

**MULCH:**  
 Mulch circles around trees shall be maintained for at least 3 years post-planting.



**PLANT SCHEDULE**

NATIVE TREE PLANTING						
ABBREV	SPECIES	DENSITY	HEIGHT/GIRTH	ROOT COND	POT SIZE	TOTAL
Ac	Aster campestris	12 - 14 (g)	12 - 14 (g)	ROOTBALLED	-	-
Bp	Betula pendula	12 - 14 (g)	12 - 14 (g)	ROOTBALLED	-	-
Ci	Crataegus laevigata	AS SHOWN	12 - 14 (g)	ROOTBALLED	-	-
Oro	Quercus robur	12 - 14 (g)	12 - 14 (g)	ROOTBALLED	-	-
Sau	Sorbus aucuparia	12 - 14 (g)	12 - 14 (g)	ROOTBALLED	-	-

ORNAMENTAL TREE PLANTING						
ABBREV	SPECIES	DENSITY	HEIGHT/GIRTH	ROOT COND	POT SIZE	TOTAL
BE	Betula 'Edinburgh'	12 - 14 (g)	12 - 14 (g)	ROOTBALLED	-	-
COA	Carpinus betulus 'Lucas'	AS SHOWN	12 - 14 (g)	ROOTBALLED	-	-
PoC	Pyrus cacteyana 'Chardislee'	12 - 14 (g)	12 - 14 (g)	ROOTBALLED	-	-
Qo	Quercus palustris 'Green Pillar'	300 - 350 (h)	300 - 350 (h)	ROOTBALLED	-	-
SaS	Sorbus aucuparia 'Strenuous'	12 - 14 (g)	12 - 14 (g)	ROOTBALLED	-	-

SHRUB PLANTING						
ABBREV	SPECIES	DENSITY	HEIGHT/GIRTH	ROOT COND	POT SIZE	TOTAL
Ac	Aucuba japonica	4 spm	30 - 40 (h)	CON	3L	-
BS	Brachyglottis Sunbrite	4 spm	30 - 40 (h)	CON	3L	-
Bt	Berberis thunbergii Orange Rocket	3 spm	40 - 60 (h)	CON	3L	-
Cd	Chrysanthemum Apple Blossom	4 spm	30 - 40 (h)	CON	3L	-
Da	Dryopteris affinis	3 spm	30 - 40 (h)	CON	3L	-
Ei	Eucalyptus japonicus 'Green Rocket'	4 spm	40 - 60 (h)	CON	3L	-
GB	Geranium macrorrhizum White Ness	6 spm	40 - 60 (h)	CON	3L	-
GW	Geranium macrorrhizum Bevan's Variety	6 spm	40 - 60 (h)	CON	3L	-
HAG	Hydrangea arborescens Annabelle	2 spm	30 - 40 (h)	CON	3L	-
HAG	Hydrangea arborescens Annabelle	5 spm	30 - 40 (h)	CON	3L	-
Hd	Hypericum x hidcotense 'Hidcot'	4 spm	30 - 40 (h)	CON	3L	-
HO	Heuchera 'Obsidian'	6 spm	30 - 40 (h)	CON	3L	-
HRE	Hebe Red Edge	6 spm	30 - 40 (h)	CON	3L	-
LaH	Lavandula angustifolia 'Hidcot'	5 spm	30 - 40 (h)	CON	3L	-
Me	Mahonia eurybracteata 'Soft Caress'	3 spm	30 - 40 (h)	CON	3L	-
Ro	Rosmarinus officinalis	4 spm	40 - 60 (h)	CON	3L	-
Sh	Scorococcus hookeriana var. sigma	4 spm	30 - 40 (h)	CON	3L	-
Si	Skimmia japonica 'Rubella'	4 spm	30 - 40 (h)	CON	3L	-
Vd	Viburnum davidii	3 spm	30 - 40 (h)	CON	3L	-

Substitutions of species or size are not acceptable without prior written consent from the landscape architect.

Note the variety of Mahonia. Alternatives are not acceptable

NOTES:  
 200mm to be left clear between all landscape areas and building edges.  
 This is a colour drawing produced at scale of 1:200 @ A0. Do not rely on monochrome or reduced copies.  
 Refer to Treesone Arboricultural Consultants for further details of existing trees.  
 Refer to Ecological Services Ltd. for ecological survey information

TDA  
 THE GRANARY  
 NEWLAND FARM  
 LLANGAN  
 CF35 5DN  
 TEL: 01446 789367

Environment | Landscape | Design

CLIENT: **WELLSPRING**

DRAWING NUMBER: TDA.3113.01 SCALE: 1:200 @ A0

DRAWN: RHC/AMP DATE: OCT 2025

PROJECT: **TRASTON LANE, NEWPORT**

DRAWING TITLE: **DETAILED SOFT LANDSCAPE PROPOSALS**