



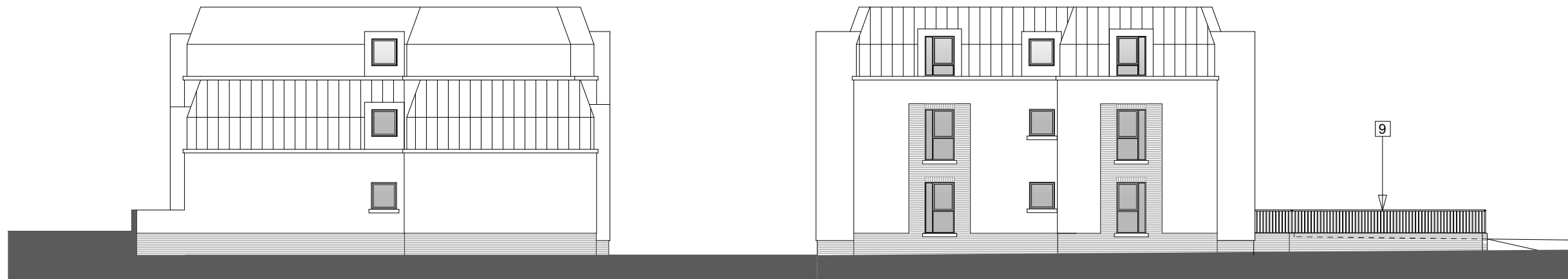
Elevation to Feering Street ( South West Facing )



Elevation to Parking ( North East Facing )

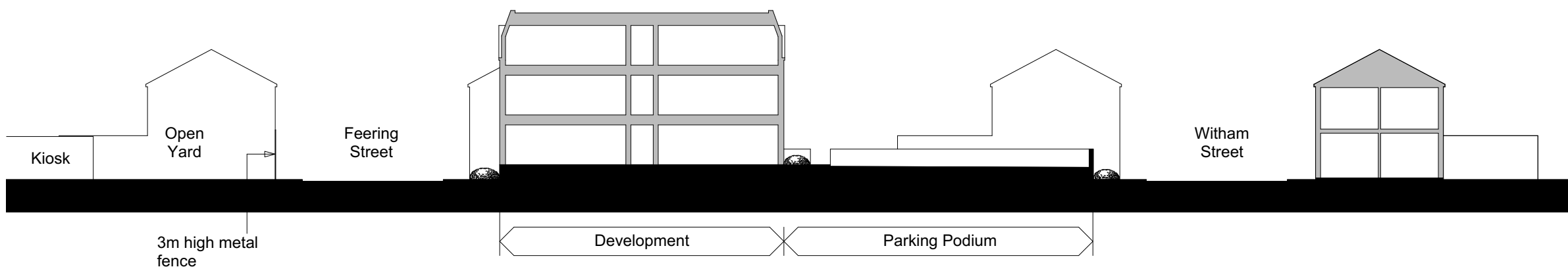
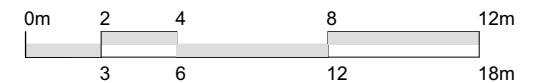
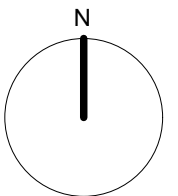
- 1 : Grey vertical standing seam cladding to roof
- 2 : Facing brickwork to base
- 3 : Off white silicone render
- 4 : Grey u.pvc double glazed windows
- 5 : Glazed balconies in aluminium projecting frame surround light grey powder coated aluminium
- 6 : Reconstituted stone string band
- 7 : Light grey dormer surrounds to top floor windows against sloping roof
- 9 : Railings above retaining walls to Kelvedon Street and Witham Street elevations

Note :  
Floor levels subject to clarification in Flood Consequence Assessment



Elevation Facing North West

Elevation to Kelvedon Street ( South East Facing )



Rev : Date Description

Kennedy James Griffiths  
Chartered Architects and Project Managers  
Project



**Proposed Apartments**  
**Kelvedon Street, Newport**

T 02920 545100  
10 Victoria Park Court  
516 Cowbridge Road East  
Cardiff  
CF5 1DB

Title Elevations, Site Section Date 14 09 2022

Status Planning Application Scale @ A3 1:200 1:300

Job Number 1660-PL1-06 Revision Drawn by CKG

Use figured dimensions where possible. Do not scale for construction purposes. This drawing is copyright.