

Casnewydd - Newport
The Civic Centre
Newport
Newport
NP20 4UR

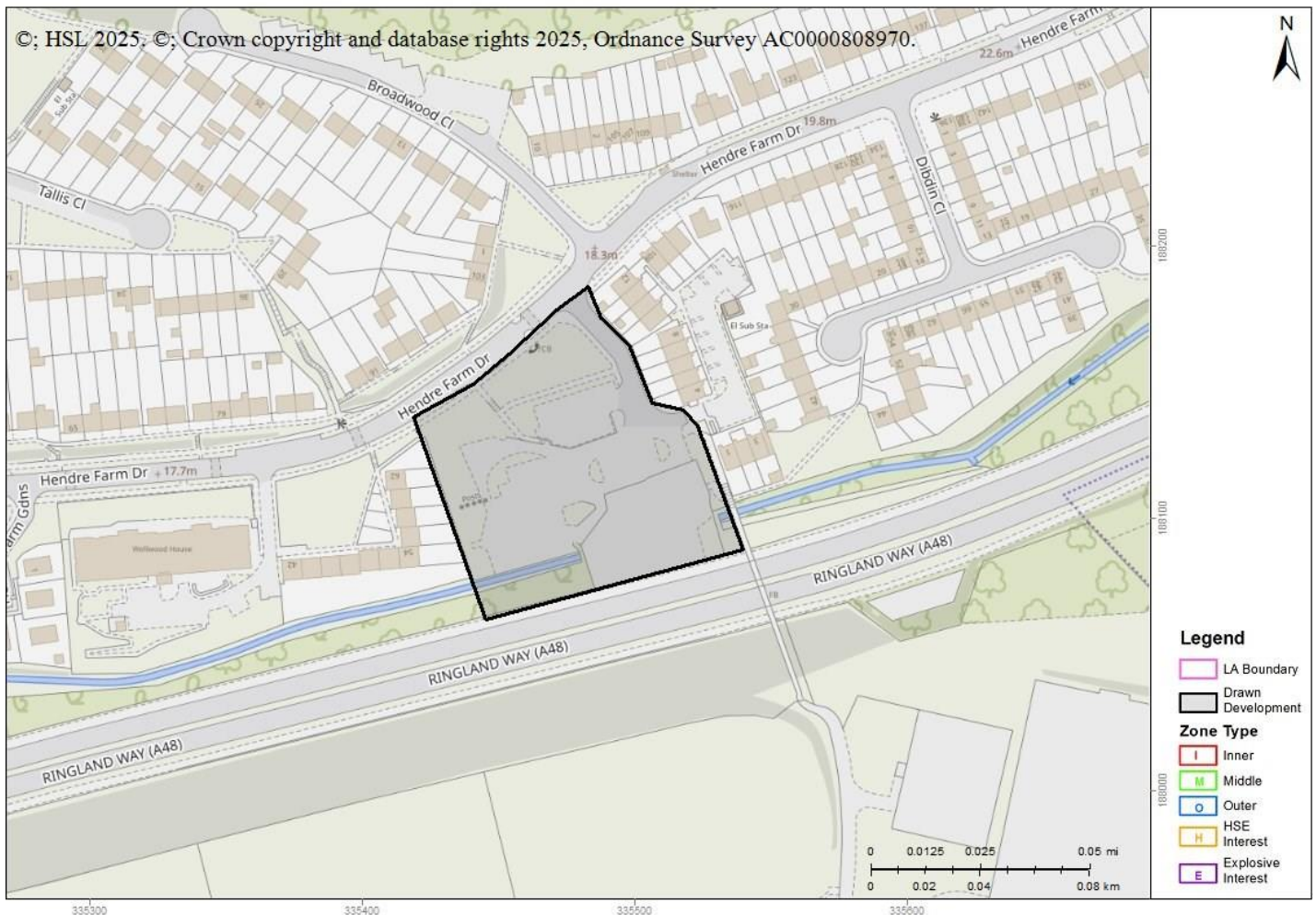


Advice : HSL-250930152922-279 Does Not Cross Any Consultation Zones

Your Ref: 25/0700

Development Name: Former Open Hearth

Comments: Flats & Houses



The proposed development site which you have identified does not currently lie within the consultation distance (CD) of a major hazard site or major accident hazard pipeline; therefore at present HSE does not need to be consulted on any developments on this site. However, should there be a delay submitting a planning application for the proposed development on this site, you may wish to approach HSE again to ensure that there have been no changes to CDs in this area in the intervening period.

This advice report has been generated using information supplied by Geraint Roberts at Casnewydd - Newport on 30 September 2025.