



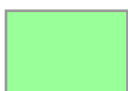




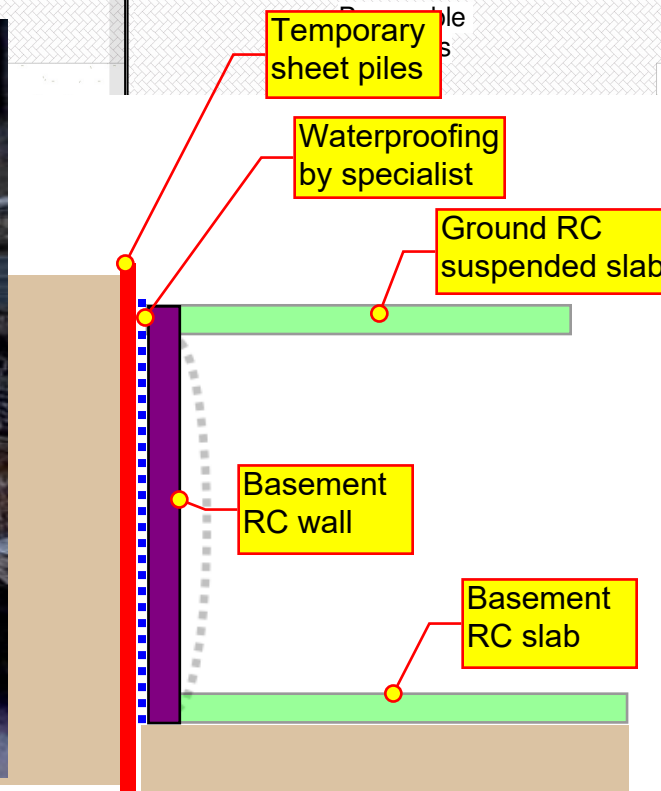
-  Temporary sheet piles
-  Reinforced concrete walls with waterproof concrete
-  Passive perforated drainage channel to deal with any ground water ingress
-  Passive drainage channel outlets, discharge points TBC
-  Reinforced concrete slab for roof, basement slab and ground floor slab to act as diaphragm

OPTION 2
Temporary sheet pile walls with reinforced concrete walls, base and ground floor slabs



Temporary cantilever sheet pile walls

clear opening working space




Temporary sheet piles

Waterproofing by specialist

Ground RC suspended slab

Basement RC wall

Basement RC slab

Rev.	Date	Details	By	Chk.
Amendments				
 Bear Structures Rugged by design				
Project: Land to rear of 94 & 96 Allt-Yr-Yn Avenue, Newport				
Title: Structural sub-structure - Option 2 - Temporary Sheet pile wall with RC basement frame				
Drawn: AB	Checked: AB	Scale(s) at A1: nts		
Date: 23.09.22	Job N°: P0377	Revision: -	Suitability: -	
Drawing Status: FOR COMMENT / INFORMATION				
Drawing N°: P0377_SK02s				