

GENERAL NOTES

This drawing is copyright and owned by AFA Architects & Planners Limited, and is for use on this site only unless contractually stated otherwise.

All other design team elements, where indicated, have been imported from the consultant's drawings and reference should be made to the individual consultant's drawings for exact setting out, size and type of component.

Discrepancies and/or ambiguities within this drawing, between it and information given elsewhere, must be reported immediately to the architect for clarification before proceeding.

All works carried out in accordance with the latest British Standards and Codes of Practice unless specifically directed otherwise in the specification.

Responsibility for the reproduction of this drawing in paper form, or if issued in electronic format, lies with the recipient to check that all information has been replicated in full and is correct when compared to the original paper or electronic image. Graphical representations of equipment on this drawing have been coordinated, but are approximations only. Please refer to the Specifications and /or Details for actual sizes and/or specific contractor construction information.

Refer to the relevant Construction [Design and Management] documentation where applicable.

It is assumed that all works on this drawings will be carried out by a competent contractor, working where appropriate to an approved method statement.

Revision	Date	Description	By	Check
E	11 04 25	Parking schedule updated	SH	IDW
D	10 04 25	At Highways Instruction - Soft landscaping reduced around vehicle access and residential cycle parking reduced to 3 space within internal store.	SH	IDW
C	10 04 25	Scale remove, 1m high soft landscaping noted	SH	IDW
B	24 03 25	Landscape Layout updated	SH	IDW
A	19 12 24	Updated design for bin and bike stores. Landscape updated to take on board police comments.	SH	IDW

Revision Date Description By Check

Purpose of Issue

FOR PLANNING

Client
S & B DEVELOPMENTS LIMITED

Project
PROPOSED REDEVELOPMENT
170-172, COMMERCIAL ROAD,
NEWPORT, NP20 2PL

Drawing
PROPOSED SITE PLAN

Scale @ A1 Drawn Checked Approved

1: 200 SH IDW

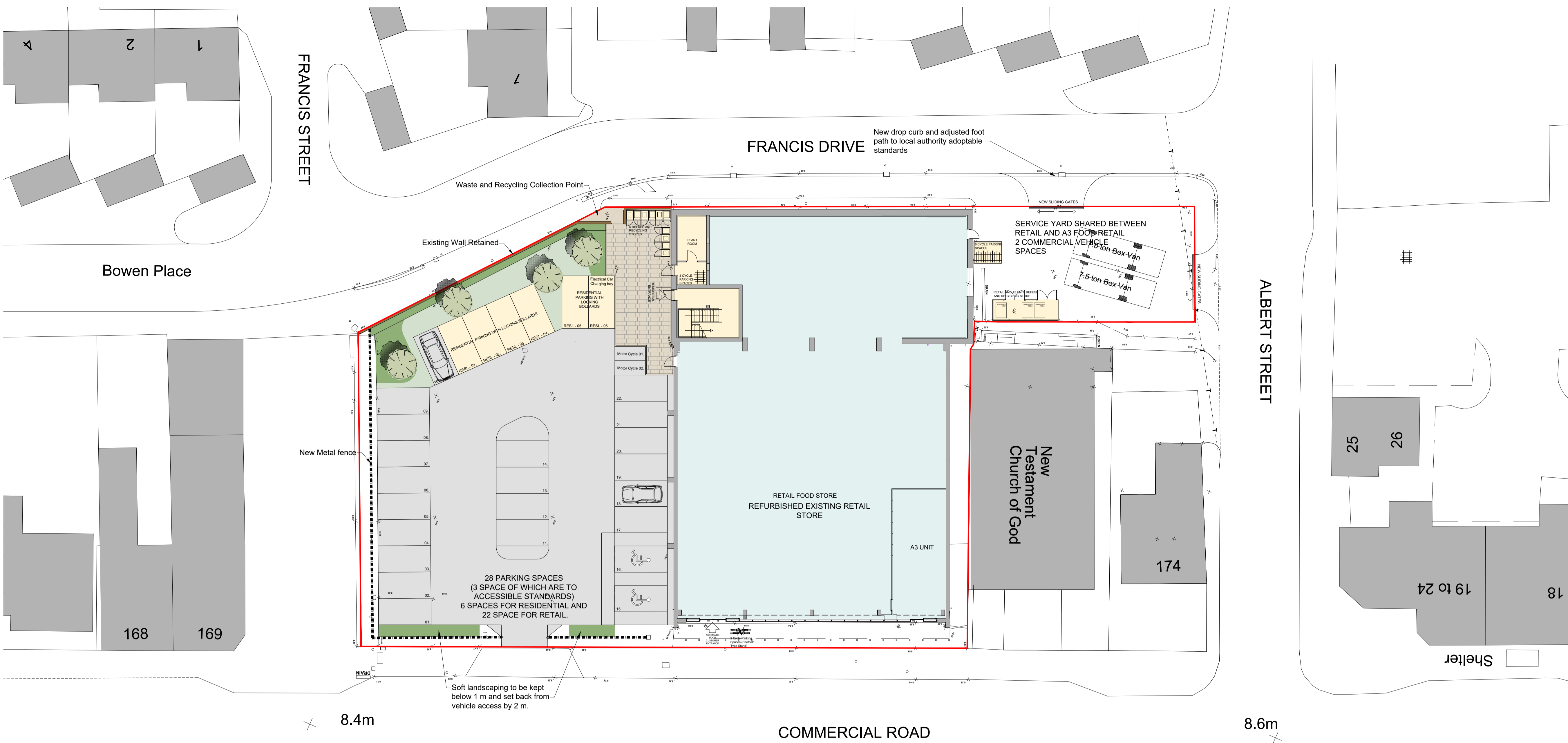
Project No. Drg No. Revision

1907 PL-202 E

Date
JULY 2024

afa
architects
+ planners

Abacus House
Caxton Place
Cardiff
South Wales
CF23 8HA



ACCOMMODATION SCHEDULE			
Type	Apartment No.	Gross Internal Area (metres squared)	
Apartment	1 Bedroom 2 Person	1	46
Duplex Apartment	1 Bedroom 2 Person	2	62
Duplex Apartment	1 Bedroom 2 Person	3	62
Duplex Apartment	1 Bedroom 2 Person	4	85
Apartment	1 Bedroom 2 Person	5	60
Residential Circulation			62
Residential Plant			18
Retail Area			817
A3 Unit Food Retail			57

Residential total of 5 bedrooms 10 person.

SITE PLAN SCHEDULE					
	Car Parking Space	Accessible Parking Space	Commercial Vehicle	Cycle parking	Waste and Refuse
Apartments	6	Shared with retail and food retail		3 space with secure enclosure near main entrance to apartments	5 secure enclosures with road side collection space provided
Retail and A3 food retail	22	2		6 Within secure enclosure within yard, 4 short stay near entrance to store	Within secure enclosure in service yard
Retail Commercial Vehicle			2		
Total	28		2	13	

