

13 Appendix 3: Photographic Record



Plate 1: View looking ENE towards Tredegar Chambers' Bridge Street elevation.



Plates 2 & 3: Views looking N towards Tredegar Chambers' Bridge Street elevation.



Plates 4 & 5: Views looking N and NW (respectively) towards the corner bay of Tredegar Chambers.



Plate 6: View looking WNW towards Tredegar Chambers' Cambrian Road elevation.



Plates 7 & 8: Views looking W towards Tredegar Chambers' Cambrian Road elevation.



Plate 9: View looking N across GF Room 1.

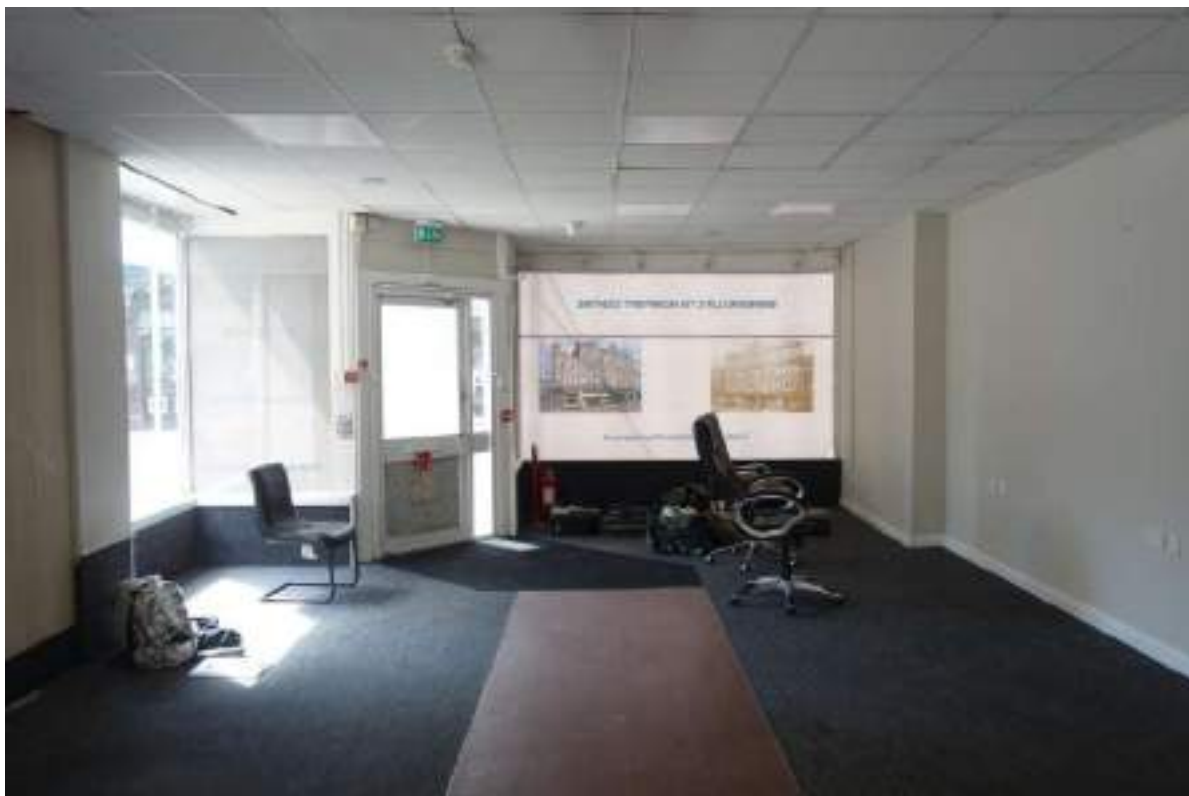


Plate 10: View looking S across GF Room 1.



Plate 11: View looking S along GF Room 2.



Plate 12: View looking NE in GF Room 2.

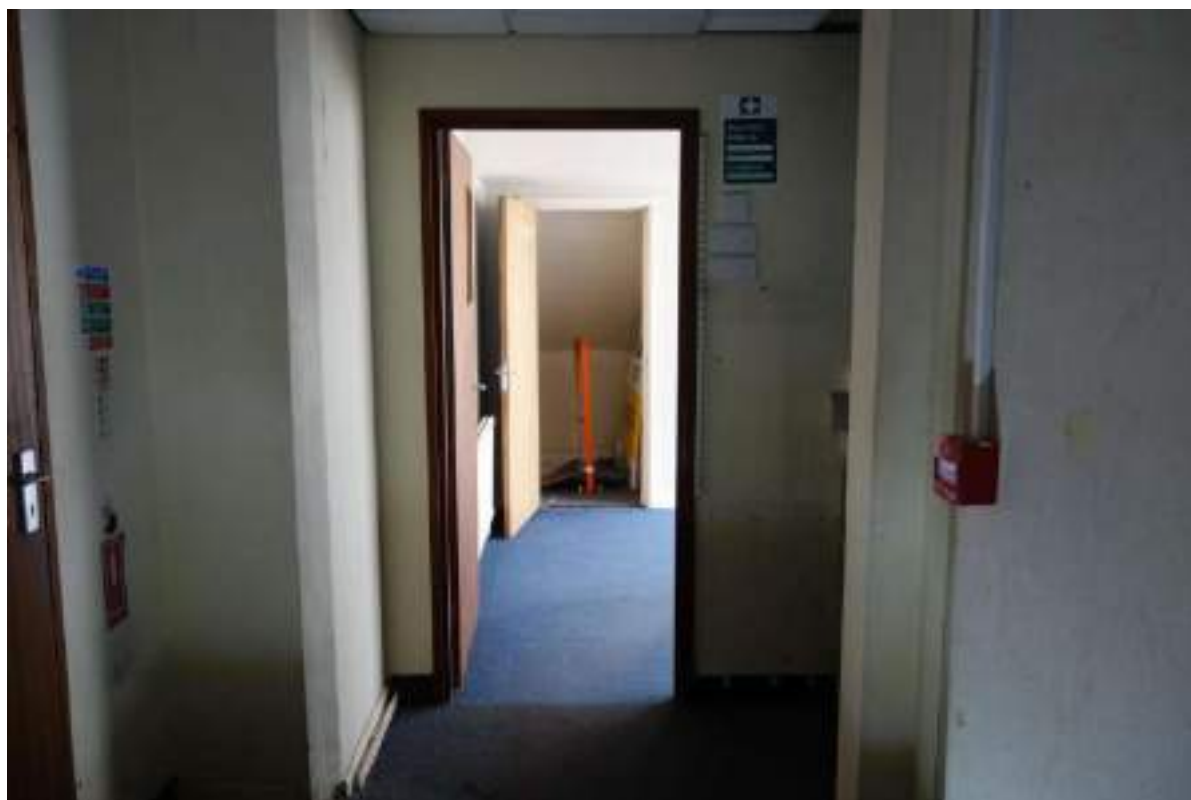


Plate 13: View looking N in GF Room 2, towards GF Room 4.



Plate 14: View looking WSW along GF Room 3.



Plate 15: View looking NE into GF Room 4.



Plate 16: View looking E in GF Room 4.



Plate 17: View looking S along GF Room 5.



Plate 18: View looking WSW along GF Room 5.



Plate 19: View looking NW in GF Room 6.



Plate 20: View looking WSW across GF Room 7.



Plate 21: View looking E across the courtyard (GF Room 8), along the one storey extension.



Plate 22: View looking SE towards the W elevation of the one storey extension.



Plate 23: View looking S towards the N-facing courtyard elevation.



Plate 24: View looking up towards the N-facing elevation of the courtyard.



Plate 25: View looking ENE towards the courtyard's W-facing elevation.



Plates 26 & 27: Views looking N and NE (respectively) along the courtyard's S-facing elevation.



Plate 28: View looking N, towards a door in the courtyard's S-facing elevation.

Plate 29: View looking W, towards the courtyard's E-facing elevation.



Plate 30: View looking SW, across the courtyard's E-facing elevation.



Plate 31: View looking NNW into GF Room 9.



Plate 32: View looking SSE in GF Room 10, towards a louvre window.



Plate 33: View looking WNW and up in GF Room 10, showing the stone of the wall.



Plate 34: View looking N along GF Room 11.

Plate 35: View looking NW in GF Room 11a.



Plate 36: View looking S in GF Room 12.

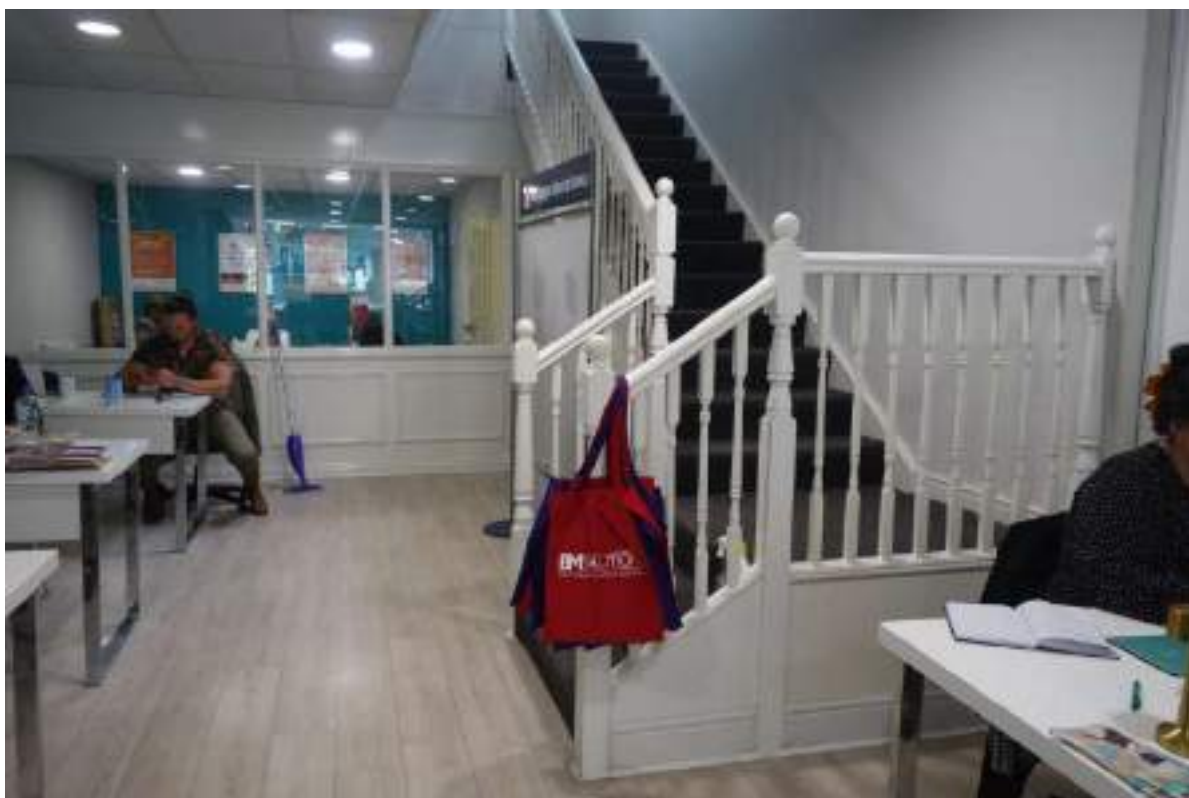


Plate 37: View looking N in GF Room 12.



Plate 38: View looking NE in GF Room 12, focusing on the panelled door and blocked window.

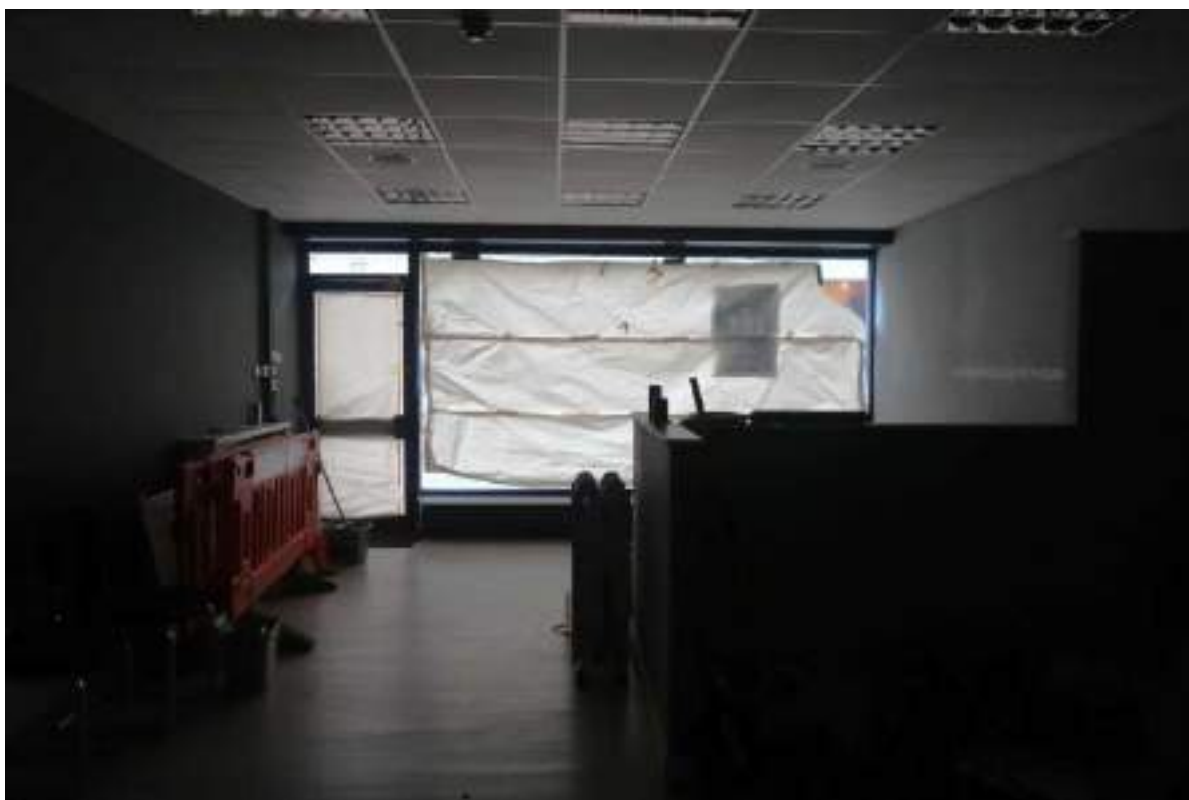


Plate 39: View looking S in GF Room 13.

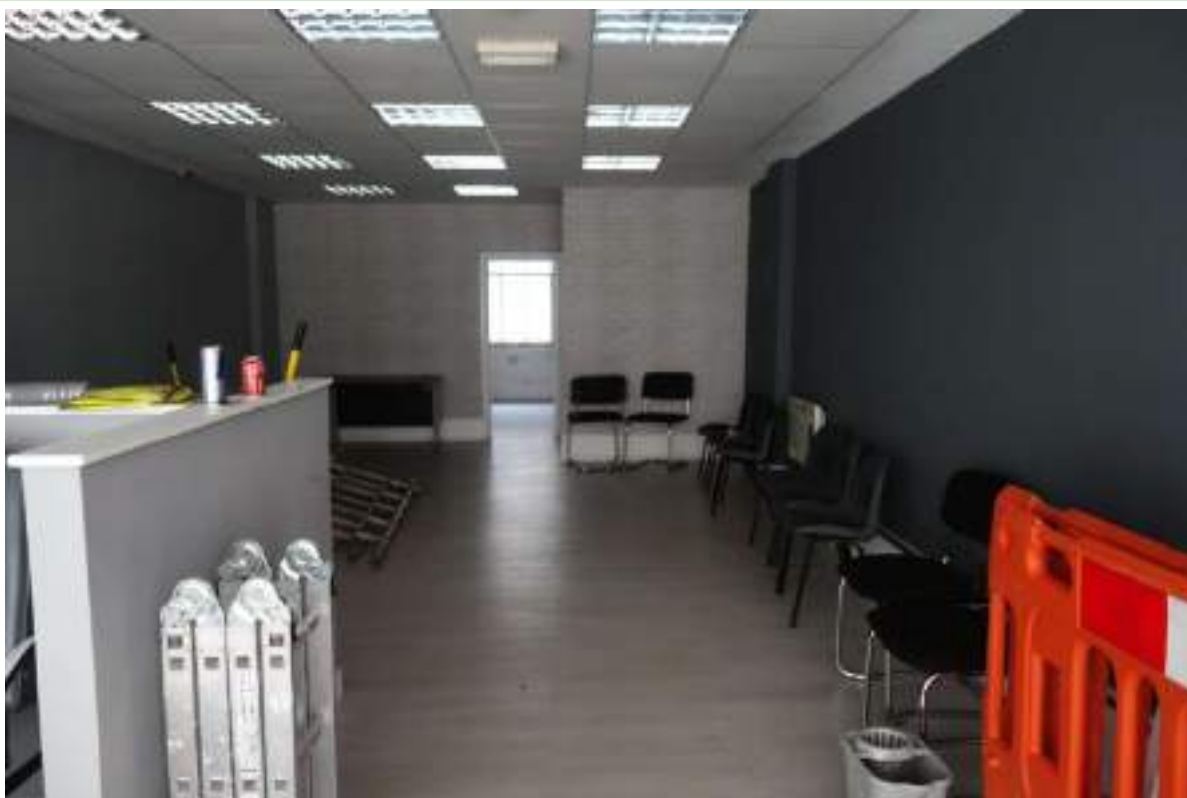


Plate 40: View looking N in GF Room 13.



Plate 41: View looking NE in GF Room 13, towards a section of dado rail, moulded skirting board, and architrave.

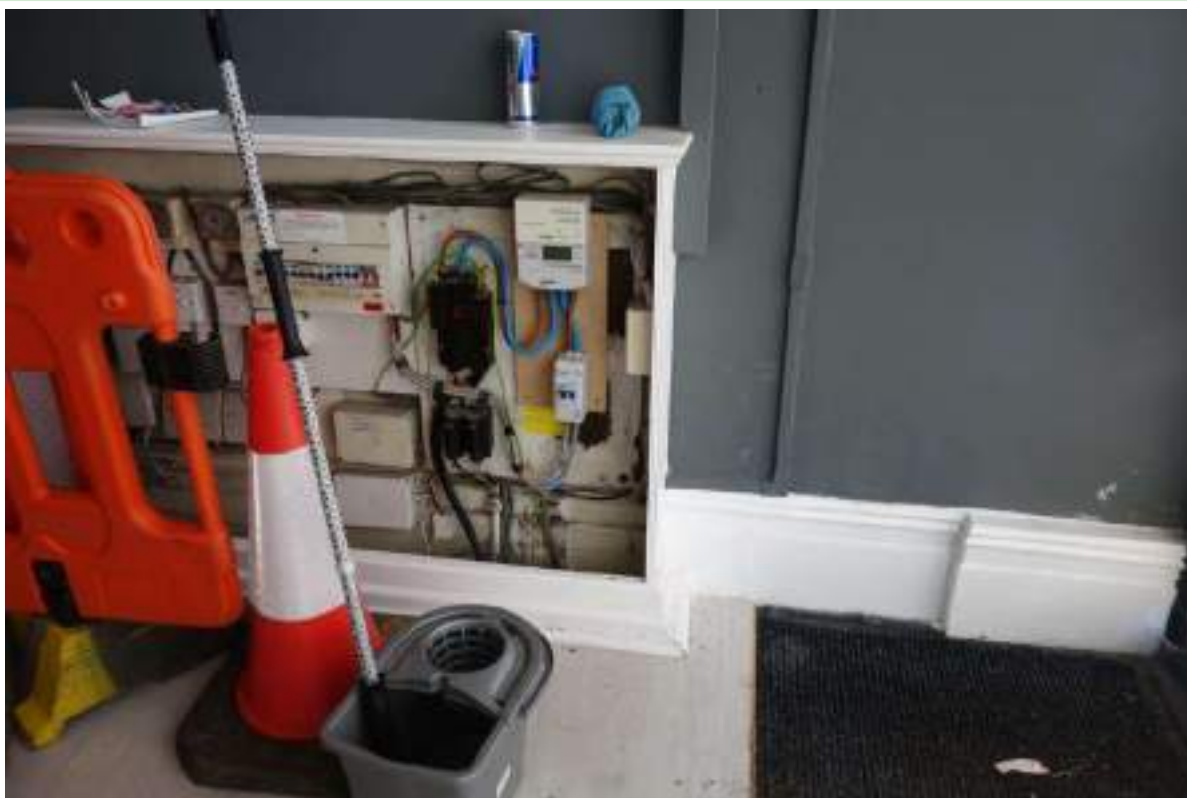


Plate 42: View looking E in GF Room 13, towards the cabinet and skirting board.



Plate 43: View looking N in GF Room 14, towards two sash windows.



Plate 44: View looking N along GF Room 15.



Plate 45: View looking S in GF Room 16.



Plate 46: View looking N across GF Room 16.



Plate 47: View looking N in GF Room 16b, across GF Room 17 and towards GF Room 18.



Plate 48: View looking S in GF Room 17.



Plate 49: View looking N along GF Room 18.



Plate 50: View looking E in GF Room 19.



Plate 51: View looking N in GF Room 19a.

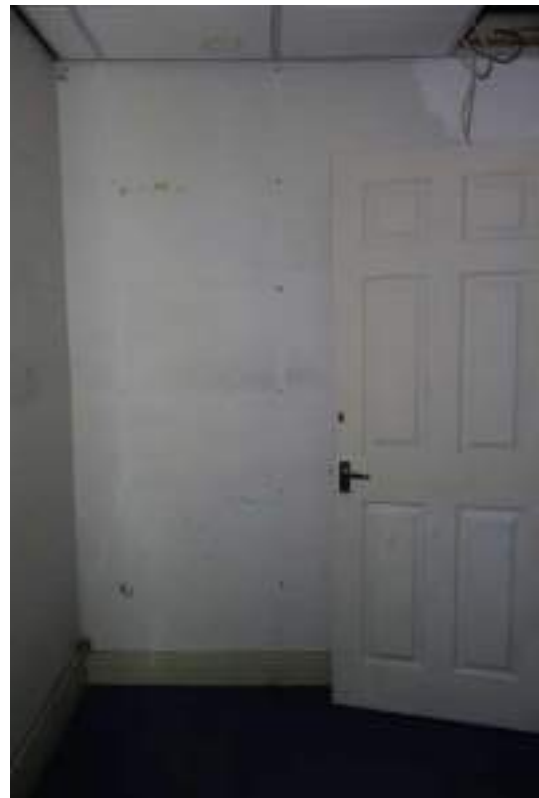


Plate 52: View looking N in GF Room 20.



Plate 53: View looking S, down the basement stairs.



Plate 54: View looking N, up the basement stairs.



Plate 55: View looking S in the basement's first (W-most) compartment.



Plate 56: View looking S in the basement's second compartment.



Plate 57: View looking N in the basement's second compartment.



Plate 58: View looking NE in the basement's third compartment.



Plate 59: View looking S in the basement's third compartment.



Plate 60: View looking E in the basement's fourth (E-most) compartment, towards one of the alcoves beneath a window.

Plate 61: View looking S, up the blocked staircase in the basement's fourth compartment.



Plate 62: View looking N in the basement's fourth compartment, in the NW sub-compartment.



Plate 63: View looking NE in the basement's fourth compartment, in the NE sub-compartment.



Plate 64: View looking N and up in GF Room 21, towards the porch's ceiling mouldings.



Plate 65: View looking N and down in GF Room 21, towards the porch's floor tiles.



Plate 66: View looking NW in GF Room 21, showing a wooden panel with pediment sign at its head.



Plate 67: View looking N in GF Room 21, showing a doorway with architrave and pediment sign at its head.



Plate 68: View looking NE in GF Room 21, through a doorway to a modern store.



Plate 69: View looking SE, towards wooden panelling and the door of GF Room 22.



Plate 70: View looking towards the area of exposed tiled floor in GF Room 22.



Plate 71: View looking N and up in GF Room 22, towards another area of wooden panelling.

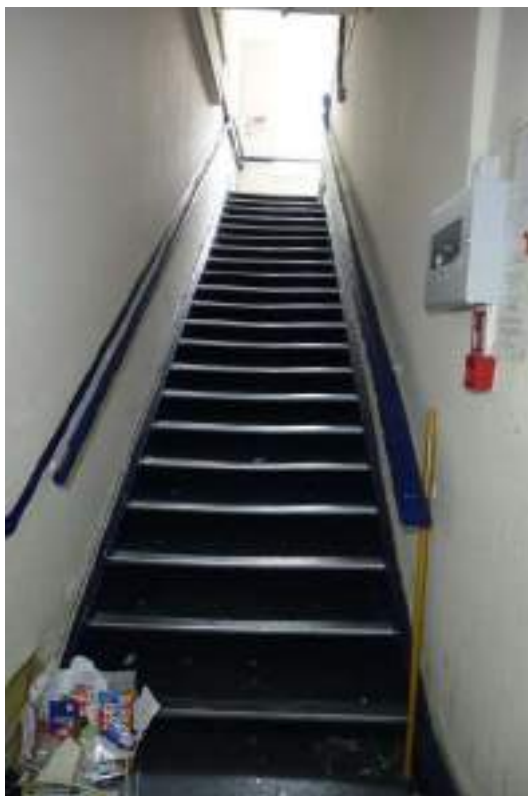


Plate 72: View looking N up the first flight of the main (central) staircase (GF to FF).



Plate 73: View looking SSE, towards two newel posts on the middle landing of the main staircase (GF to FF).



Plate 74: View looking SE and up, towards two pendants on the middle landing of the main staircase (GF to FF).



Plate 75: View looking NE across the windows of the main staircase (GF to FF).



Plate 76: View looking S, up the second flight of the main staircase (GF to FF).



Plate 77: View looking E along FF Room 1.



Plate 78: View looking W along FF Room 1.



Plate 79: View looking E along FF Room 2.



Plate 80: View looking NW in FF Room 2, towards a section of dado rail.



Plate 81: View looking NNW in FF Room 3.

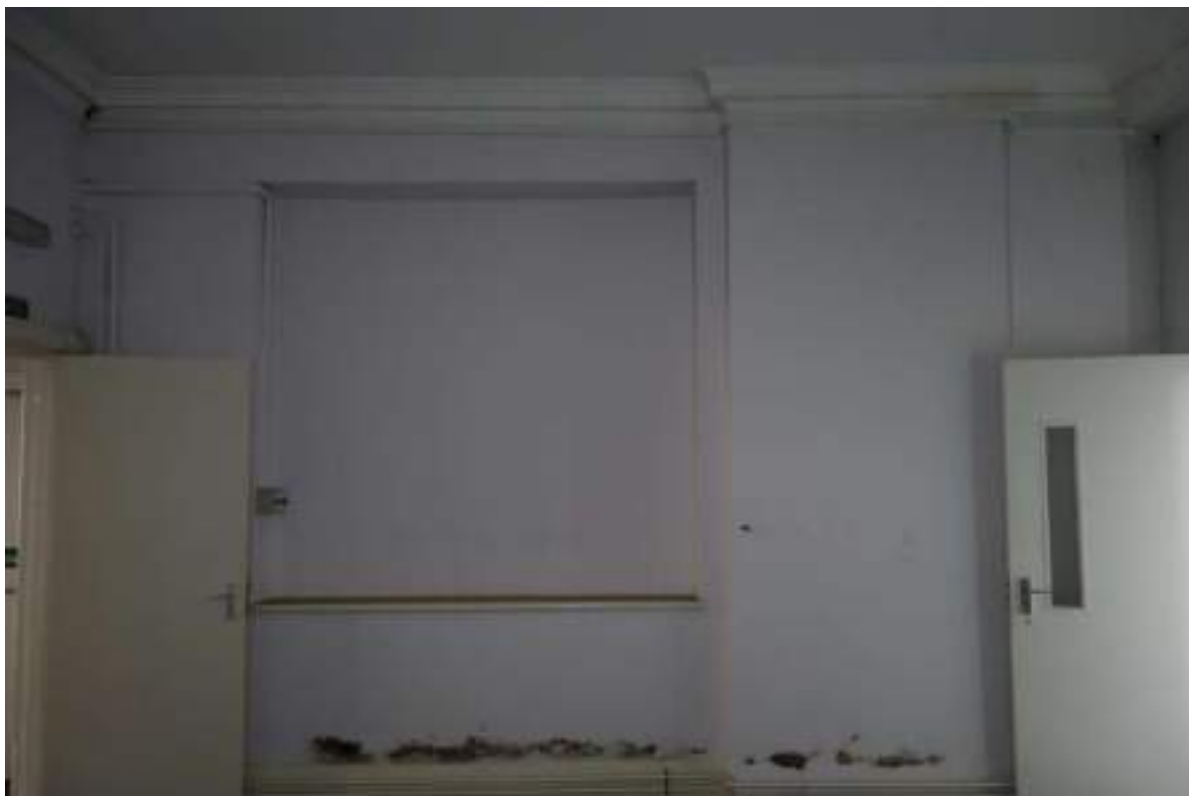


Plate 82: View looking W in FF Room 3, towards a boarded-up interior window.



Plate 83: View looking NNW in FF Room 4, showing the sash windows and wooden panelling between.



Plates 84 & 85: Views looking WSW and E (respectively) in FF Room 4.



Plate 86: View looking NW in FF Room 4, towards the entry to FF Room 5.

Plate 87: View looking E into FF Room 4a.



Plate 88: View looking E in FF Room 4b.



Plate 89: View looking E in FF Room 4c.



Plate 90: View looking E in FF Room 5.



Plate 91: View looking SE, towards a sash window in FF Room 5.



Plate 92: View looking NE in FF Room 6.



Plate 93: View looking S in FF Room 6.



Plate 94: View looking NW in FF Room 6, toward both doors to the E GF to FF staircase.



Plate 95: View looking W in FF Room 6, showing a close-up of the architrave's corner block.

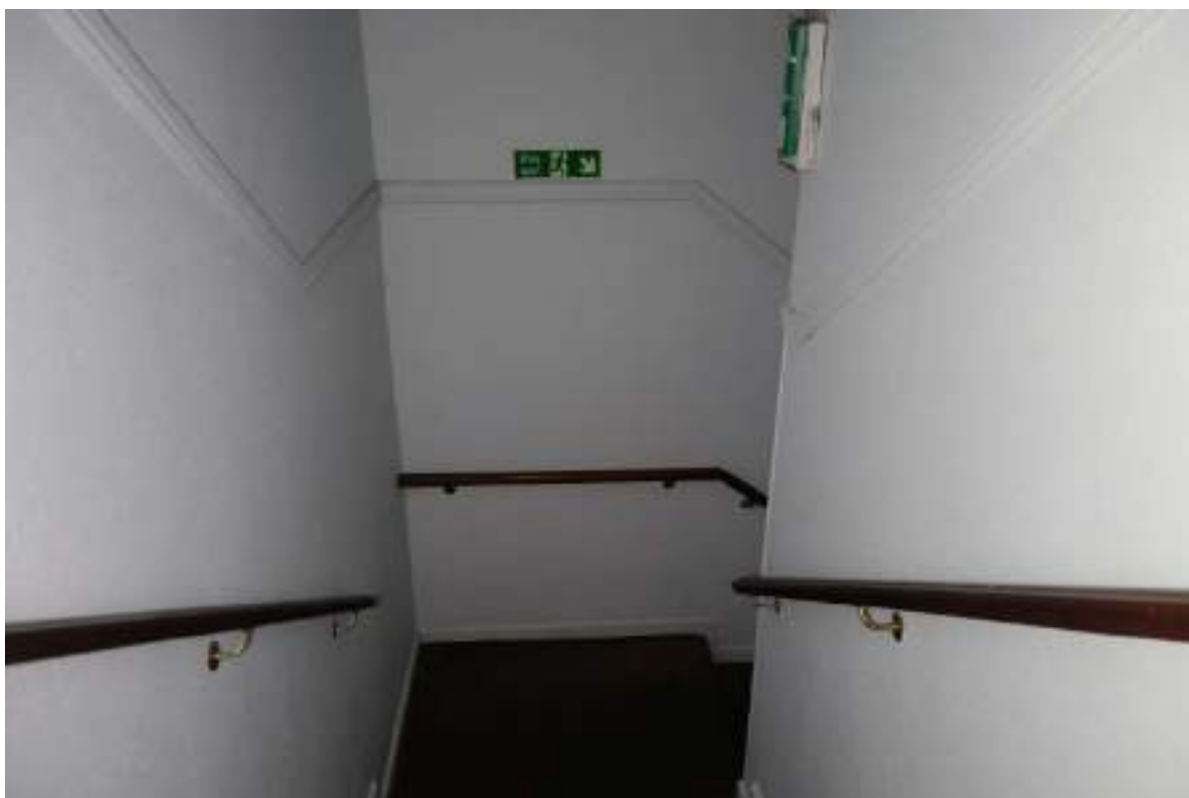


Plate 96: View looking N, down the GF to FF E-bay staircase.

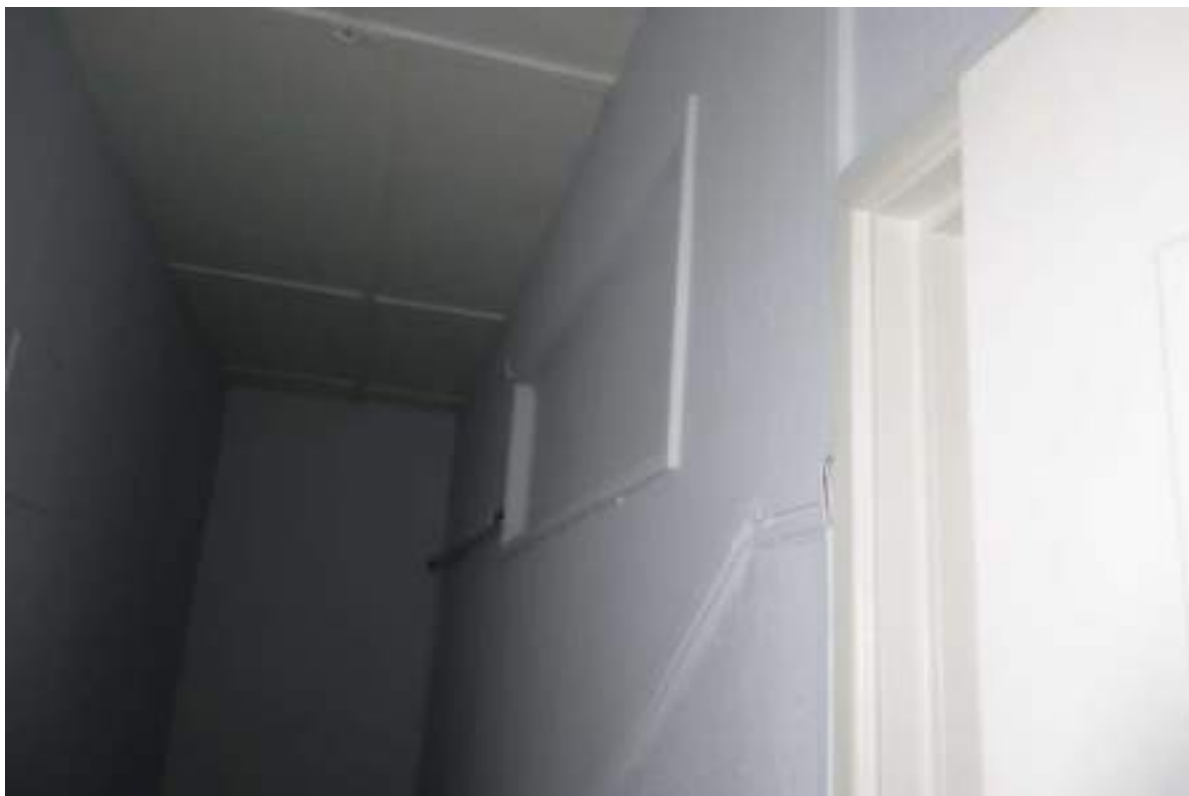


Plate 97: View looking NE in the GF to FF E-bay staircase, showing the dado rail and boarded-up interior window.



Plate 98: View looking E, towards two sash windows in FF Room 7.



Plate 99: View looking NE in FF Room 7, showing an area of wall tiling.



Plate 100: View looking SSE in FF Room 8, towards the windows of the corner bay.



Plate 101: View looking E in FF Room 8, towards the windows of the corner bay and an area of wooden panelling.



Plate 102: View looking NE along FF Room 8.



Plate 103: View looking S, down the FF to SF E-bay staircase.



Plate 104: View looking S, showing the wooden panelling and interior windows associated with the FF to SF E-bay staircase.



Plate 105: View looking S towards the sash windows in FF Room 9.



Plate 106: View looking N in FF Room 9, towards the two doorways with architraves, showing the picture rail.



Plate 107: View looking SW, towards the panelled door between FF Room 9 and FF Room 12c.



Plate 108: View looking W in FF Room 10.



Plate 109: View looking E in FF Room 11.



Plate 110: View looking NE, towards the small paneled door in FF Room 10.



Plate 111: View looking N into FF Room 11.



Plate 112: View looking W in FF Room 11, towards a wrought-iron fire place with tiled panels.

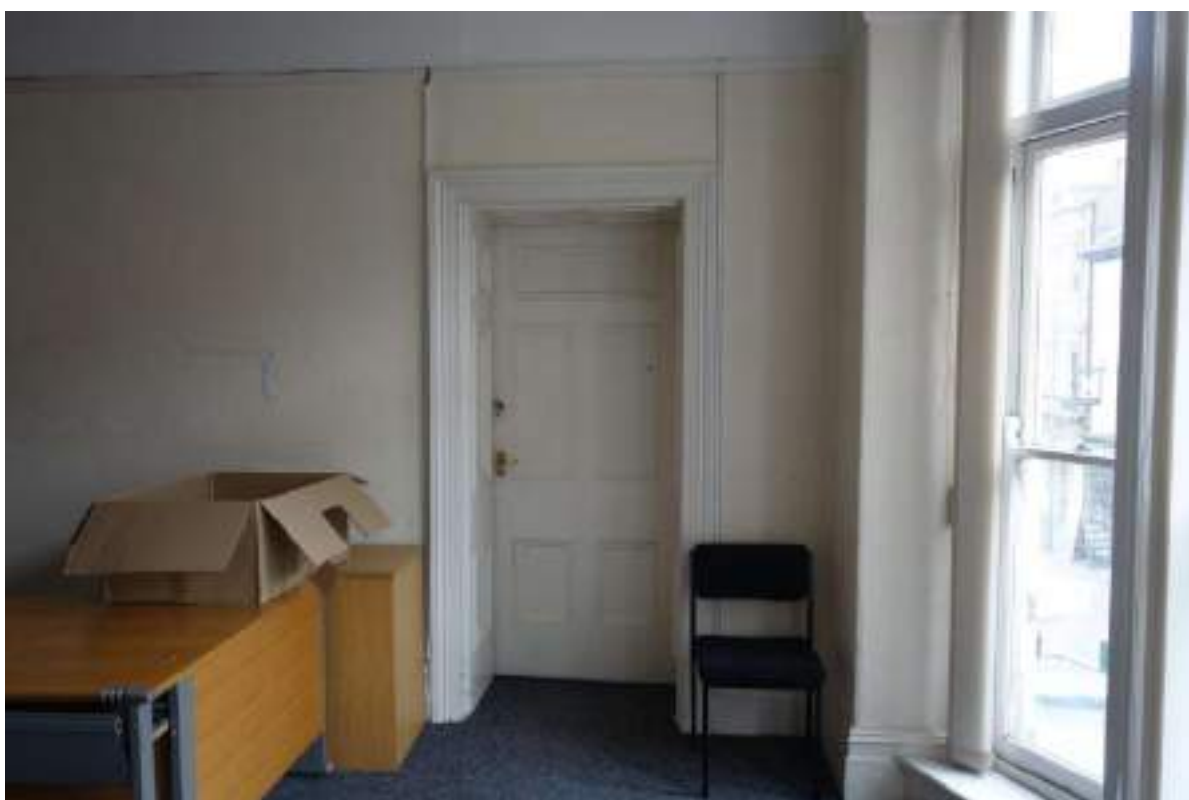


Plate 113: View looking W in FF Room 11, towards a deep doorway with wooden panelling.

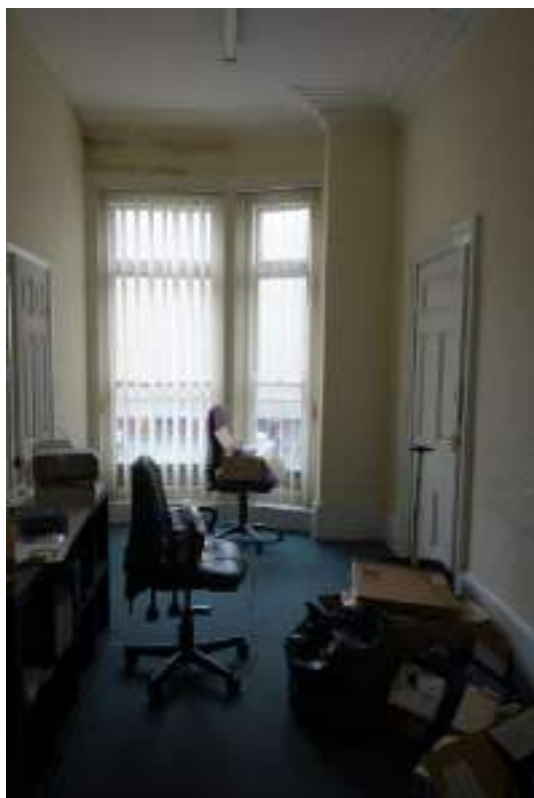


Plate 114: View looking S in FF Room 12a.



Plate 115: View looking E in FF Room 12b.



Plate 116: View looking S in FF Room 12c.



Plate 117: View looking NE in FF Room 12c, towards a wrought-iron fireplace with tiled panels.



Plate 118: View looking ESE towards the cupboard between FF Room 12c and FF Room 9.



Plate 119: View looking N in FF Room 13, towards two sash windows.



Plate 120: View looking S in FF Room 13, towards an interior window.



Plate 121: View looking W in FF Room 13, towards a wrought-iron fireplace.

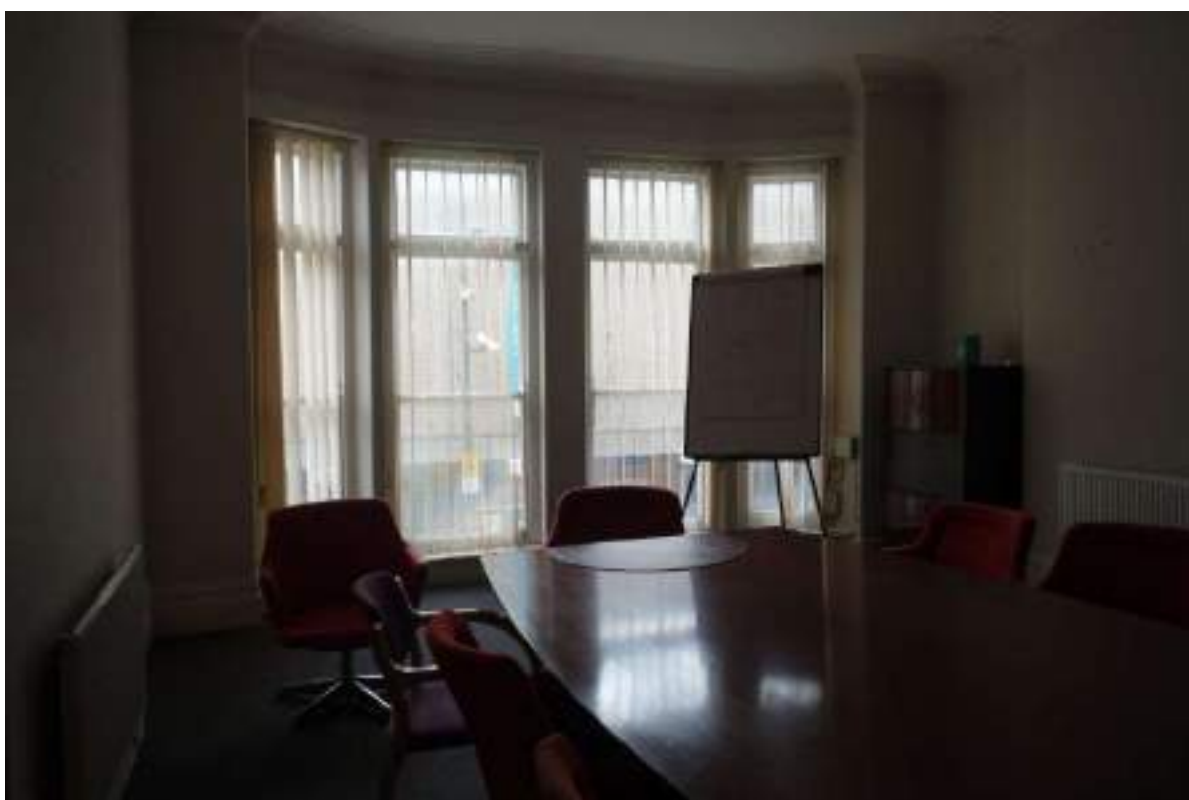


Plate 122: View looking S into FF Room 14.

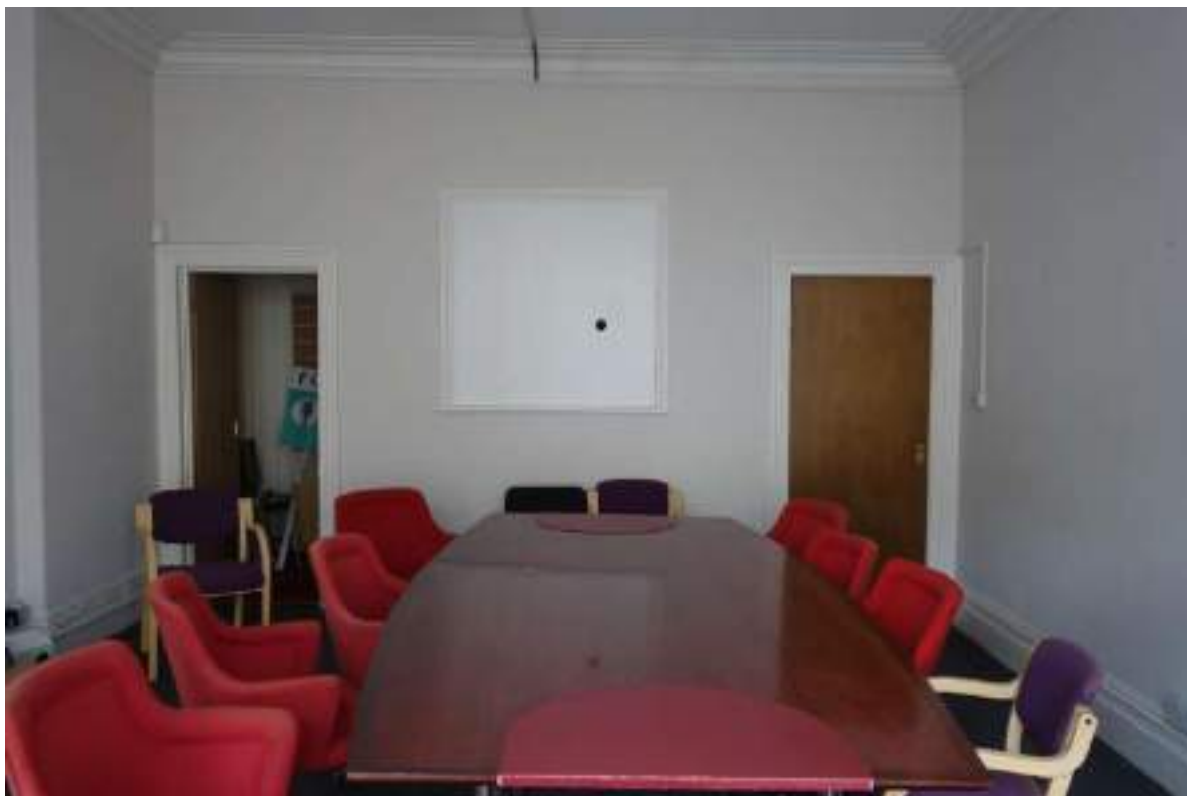


Plate 123: View looking N in FF Room 14.



Plate 124: View looking E in FF Room 14a.



Plate 125: View looking NE in FF Room 15, towards the windows and GF to FF W-bay staircase.



Plate 126: View looking S in FF Room 15, towards FF Room 15a.



Plate 127: View looking S in FF Room 15a, towards a blocked interior window and doorway.



Plate 128: View looking S in FF Room 16.



Plate 129: View looking SSE in FF Room 16a, towards two casement windows.

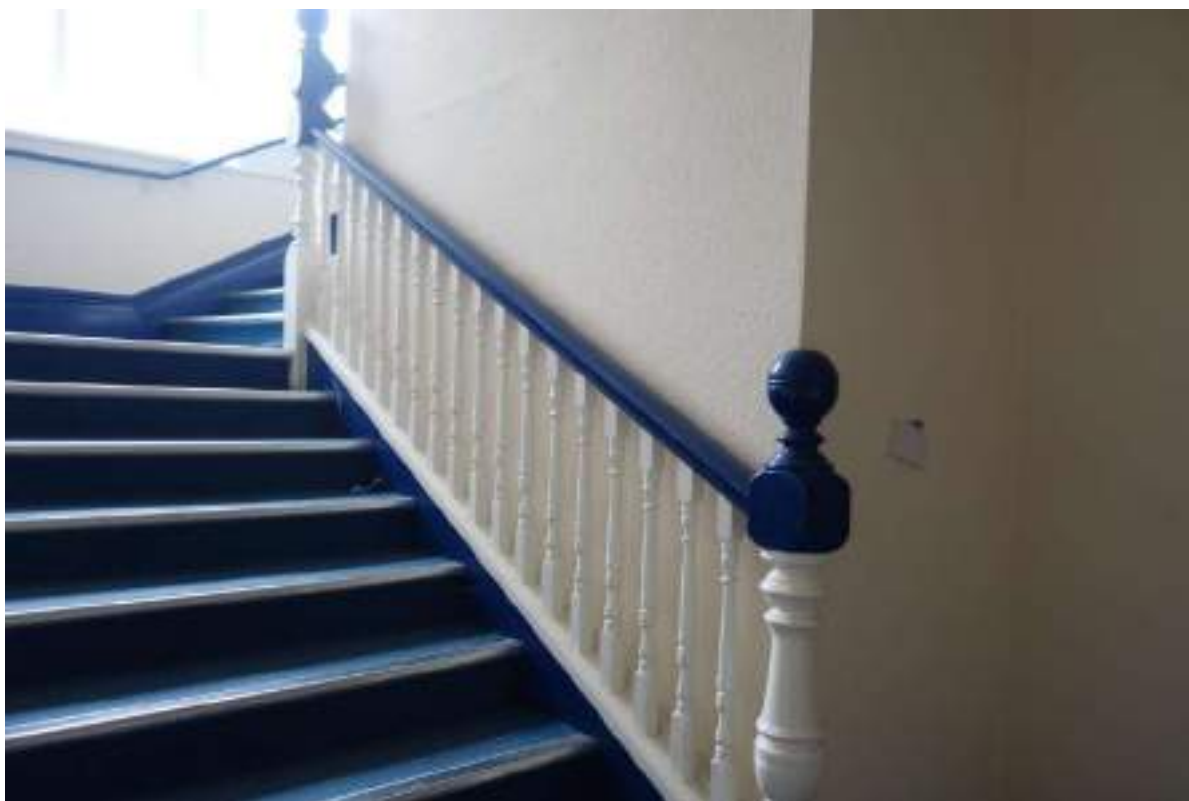


Plate 130: View looking NE up the first flight of the main staircase (FF to SF).



Plate 131: View looking NNE across the centre flight of the main staircase (FF to SF), towards the windows.



Plate 132: View looking ESE and up the centre flight of the main staircase (FF to SF), towards a pendant.

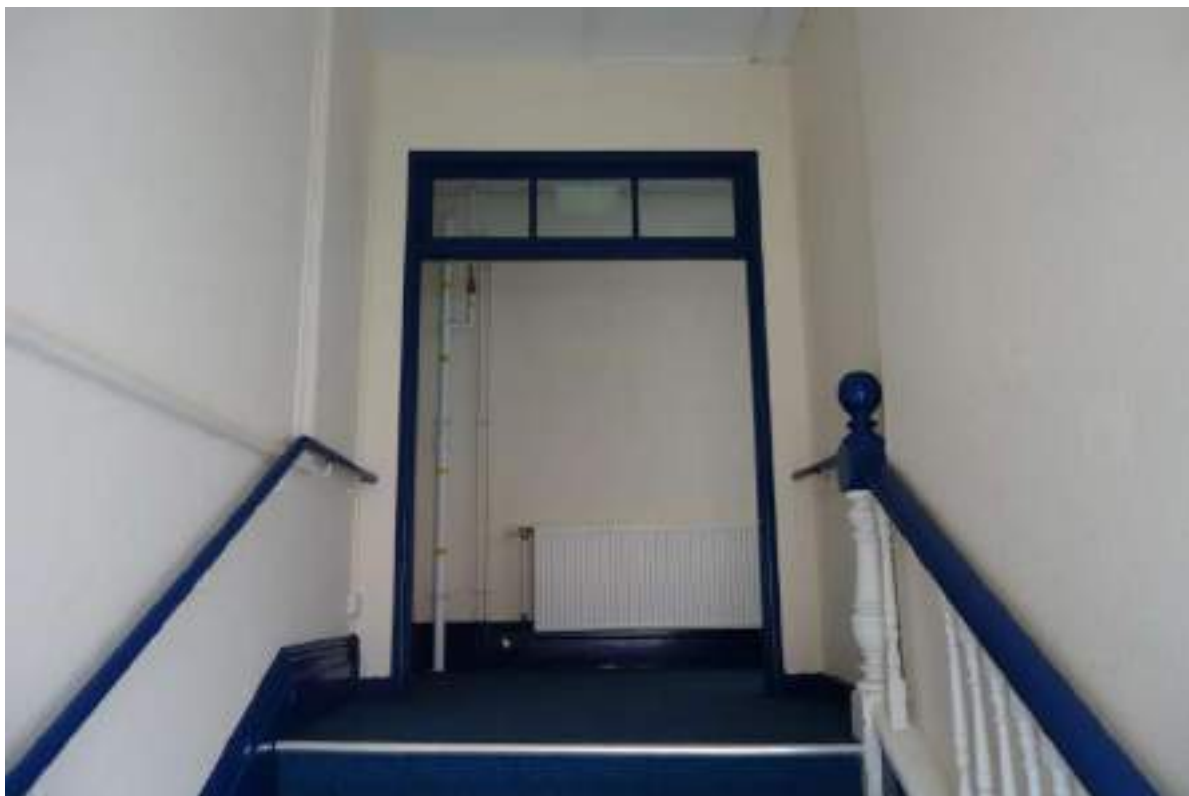


Plate 133: View looking S up the third flight of the main staircase (FF to SF).



Plate 134: View looking NE from the top of the main staircase (FF to SF), towards a boarded-up interior window.



Plate 135: View looking N in the bathroom of the main staircase (FF to SF), towards a sash window.



Plate 136: View looking W in SF Room 1.



Plate 137: View looking E in SF Room 1.



Plate 138: View looking N in SF Room 2, towards three sash windows.



Plate 139: View looking N across SF Room 3a, towards SF Room 4 and the FF to SF E-staircase.



Plate 140: View looking S in SF Room 3a.



Plate 141: View looking NW in SF Room 3a, towards a large section of wooden panelling.



Plate 142: View looking S and up in SF Room 3a, showing the coffered ceiling.



Plate 143: View looking NE in SF Room 3a, showing its extent where the wooden panelling ends.



Plate 144: View looking SW in SF Room 3b, towards a section of wooden panelling.



Plate 145: View looking NE in SF Room 3c, towards the windows of the corner bay and the wooden panelling beneath.



Plate 146: View looking E in SF Room 3d, towards a section of wooden panelling.



Plate 147: View looking ENE in SF Room 3e, towards a sash window with wooden panelling beneath.



Plate 148: View S and up in SF Room 3e, towards the coffered ceiling.



Plate 149: View looking N in SF Room 4.



Plate 150: View looking SSW in SF Room 4, towards the partition wall with upper windows of the FF to SF E-bay staircase and the SF to FF E-bay staircase (SF Room 5).



Plate 151: View looking SSW in SF Room 5, towards an area of wooden panelling.

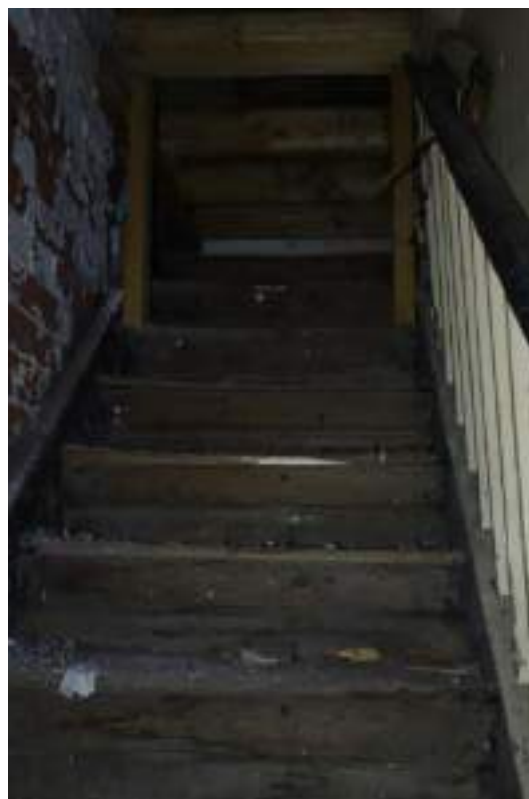


Plate 152: View looking E up the SF to TF E-bay staircase.



Plate 153: View looking S in SF Room 6.



Plate 154: View looking N in SF Room 6.



Plate 155: View looking W in SF Room 6, towards a mantel piece and a deep doorway with architrave.



Plate 156: View looking W, towards the corbel of the mantel piece in SF Room 6.



Plate 157: View looking S in SF Room 7.



Plate 158: View looking N in SF Room 7.



Plate 159: View looking E in SF Room 7.



Plate 160: View looking SW in SF Room 7, towards wooden panelling in a deep doorway.



Plate 161: View looking S in SF Room 8.



Plate 162: View looking N in SF Room 8.



Plate 163: View looking WNW in SF Room 8.



Plate 164: View looking S in SF Room 9.



Plate 165: View looking N in SF Room 9.



Plate 166: View looking SE in SF Room 9.



Plate 167: View looking N in SF Room 10.



Plate 168: View looking N in SF Room 11.



Plate 169: View looking N in SF Room 11, towards a sash window.



Plate 170: View looking E in SF Room 11, towards a storage room with architrave doorway.



Plate 171: View looking W in SF Room 11, showing a section of picture rail between two partitioned rooms.



Plate 172: View looking NW in SF Room 11, towards another section of picture rail.

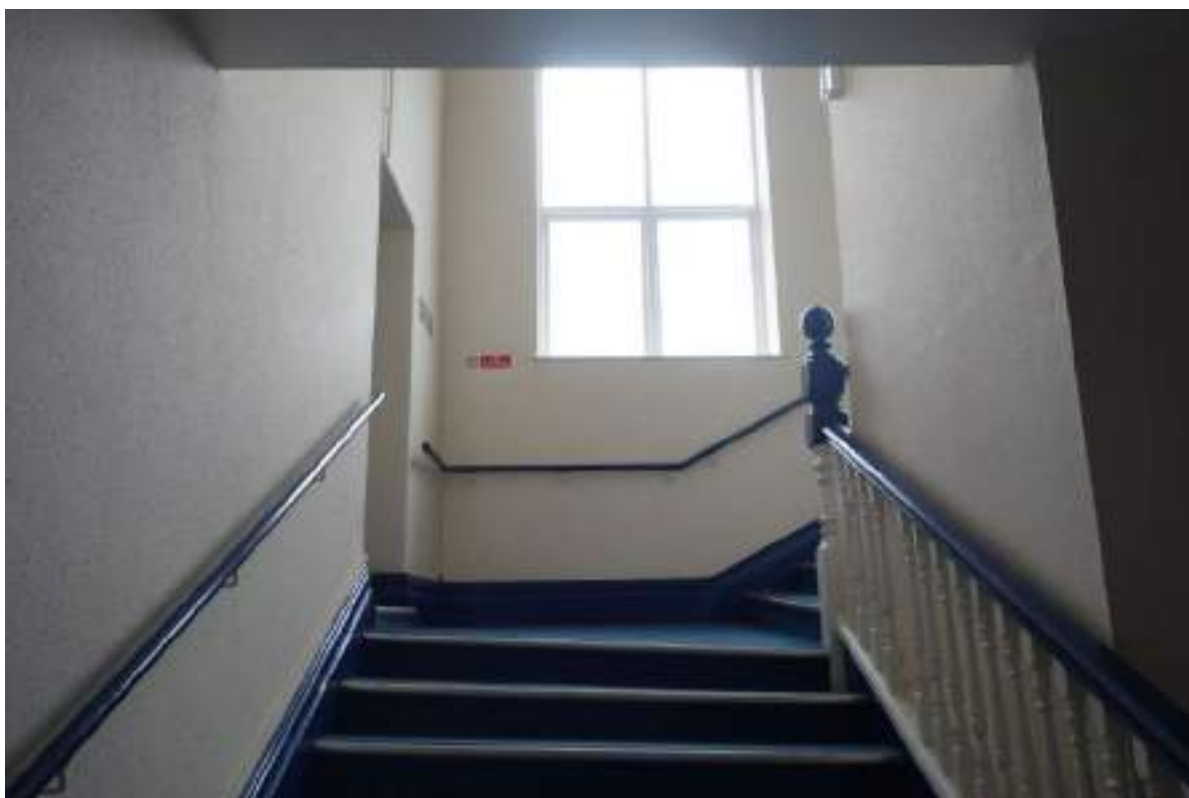


Plate 173: View looking N up the first flight of the main staircase (SF to TF).

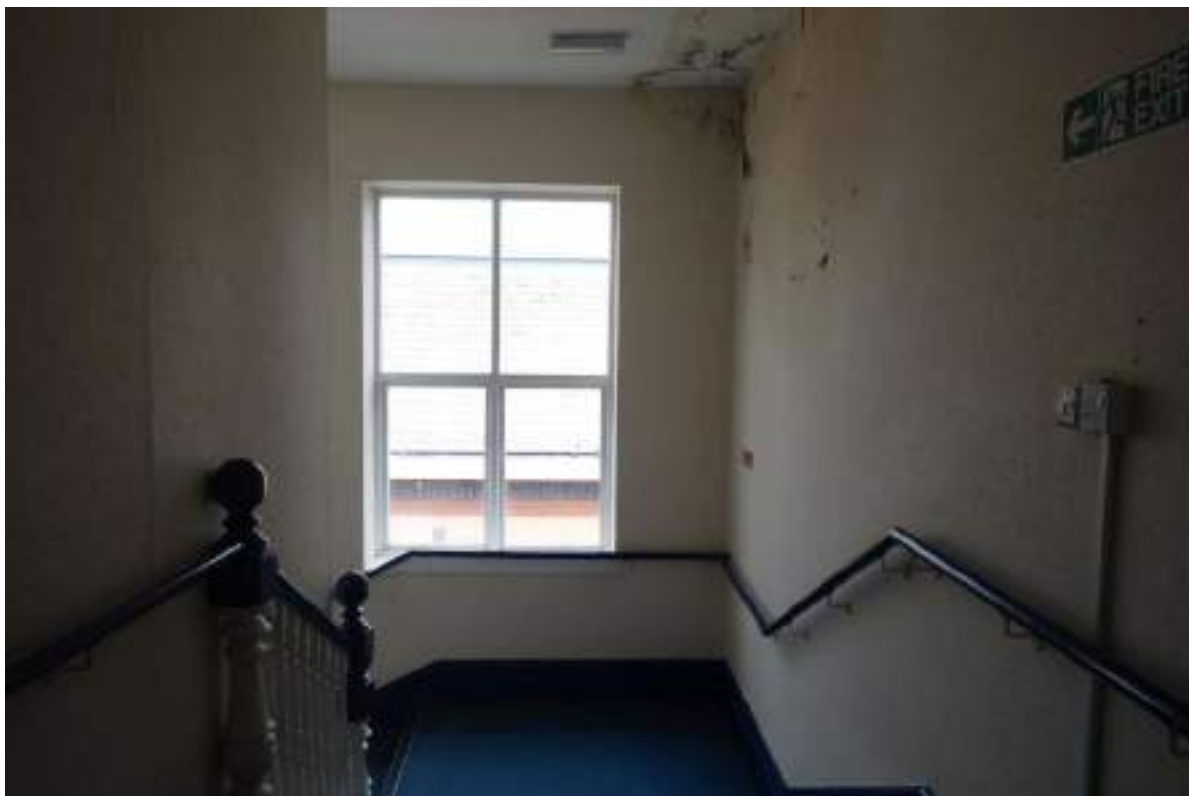


Plate 174: View looking N down the final flight of the main staircase (SF to TF).



Plate 175: View looking S, towards the entryway way with windows above at the top of the main staircase (SF to TF).



Plate 176: View looking E along the main staircase's (SF to TF) middle flight, showing two newel posts and the stairs' camber.



Plate 177: View W and up from the main staircase's middle flight, towards a blocked interior window.



Plate 178: View looking S, towards an interior window in the washroom off the main staircase's (SF to TF) first landing.



Plate 179: View looking N, towards a sash window in the washroom off the main staircase's (SF to TF) first landing.



Plate 180: View looking W along TF Room 1.



Plate 181: View looking E along TF Room 1.



Plate 182: View looking NW in TF Room 2.



Plate 183: View looking N in TF Room 3, towards two faux-arched sash windows.



Plate 184: View looking N in TF Room 4, towards two sash windows and half of a boarded-up window recess.

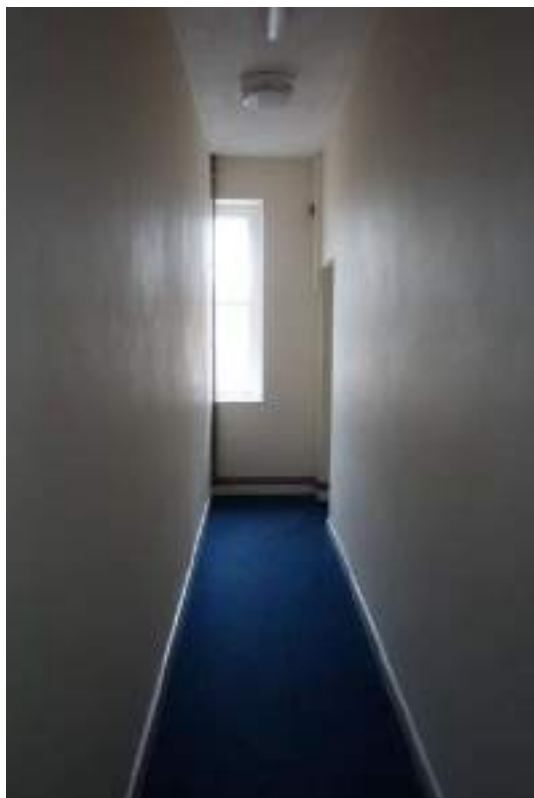


Plate 185: View looking N in TF Room 5, showing the other half of TF Room 4's window recess, here an un-boarded sash window.

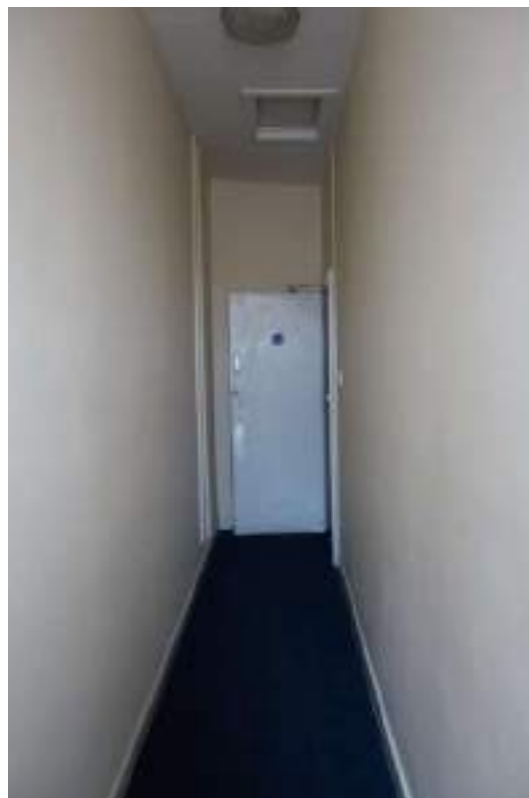


Plate 186: View looking S in TF Room 5.



Plate 187: View looking E in TF Room 5.



Plate 188: View looking S into TF Room 6.



Plate 189: View looking NE across TF Room 7.



Plate 190: View looking SE across TF Room 8.



Plate 191: View looking S in TF Room 8, towards the central arched window with balustrade beyond.



Plate 192: View looking SW in TF Room 8.



Plate 193: View looking WSW in TF Room 8.



Plate 194: View looking S in TF Room 9, towards a faux-arched sash window.



Plate 195: View looking W in TF Room 9, towards the skirting boards.



Plate 196: View looking N into TF Room 10, towards three faux-arched sash windows.



Plate 197: View looking ENE in TF Room 10, showing the picture rail and the window above the door.



Plate 198: View looking NW in TF Room 11, towards an interior window in the small room.



Plate 199: View looking NNW in TF Room 12, towards three sash windows.



Plate 200: View looking S in TF Room 12, towards two interior windows.



Plate 201: View looking E in TF Room 12, towards a wrought-iron fireplace with glazed tile panels.



Plate 202: View looking SE in TF Room 12, towards the door to TF Room 12a.



Plate 203: View looking ENE in TF Room 12a.



Plate 204: View looking N in TF Room 13, towards two sash windows.



Plate 205: View looking W, up the stairs to TF Room 14.



Plate 206: View looking SW at the top of the stairs to TF Room 14, towards the skirting boards.



Plate 207: View looking N in TF Room 14, towards a sash window.



Plate 208: View looking NNE towards The Lamb Public House.



Plate 209: View looking SE towards the National Westminster Bank, along Cambrian Road.



Plate 210: View WNW, towards pedestal and statue of Sir Charles Morgan, showing views towards the site past the National Westminster and HSBC banks.



Plate 211: View looking NE towards the Bridge Street elevation of HSBC (formerly Midland Bank).



Plate 212: View E towards 34 & 35, High Street along Cambrian Road.



Plate 213: View looking W towards Queen's Hotel.



Plate 214: View looking ENE towards 31, 32, 33 High Street, including 2a & 2-4 Skinner Street.



Plate 215: View looking W from the intersection of Bridge Street, High Street, Skinner Street, and Stow Hill.



Plate 216: View looking E towards the site, past Queen's Hotel and towards the site.