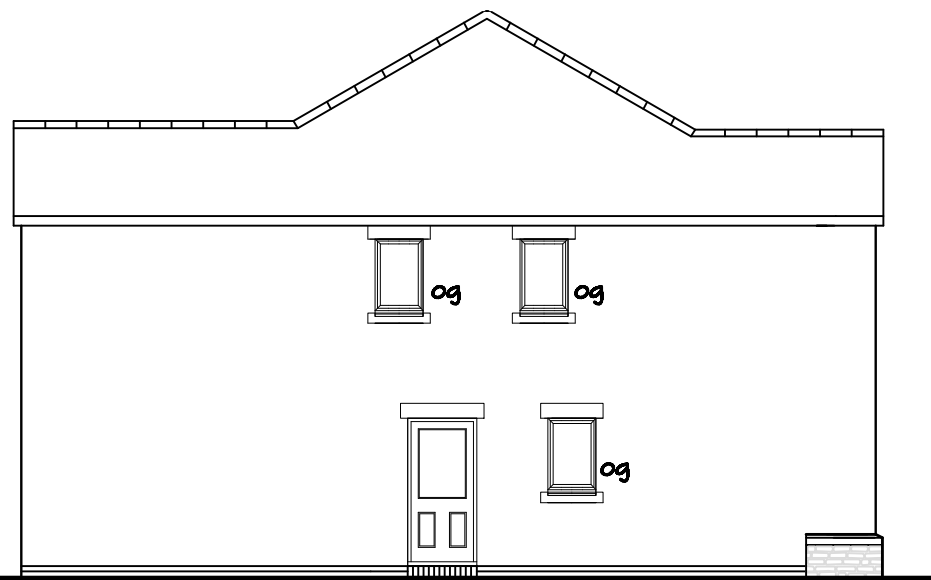




FRONT ELEVATION



SIDE ELEVATION og = obscure glazed

MATERIALS:

ROOF:

Half Round concrete ridge- 'Anthracite' colour, on Mockbond Mini Stonewold roof tiling - 'Slate Grey' by Messrs Redland or equal approved.

FACIAS, BARGE BOARDS & SOFFITS:

Black Ash wood effect uPVC.

WALLS:

Reddish/Brown fair faced facing brickwork, 'Bexhill' by Messrs Ibstock or equal approved.

'Bradstone' reconstructed stonework to plinth work where shown.

WINDOWS:

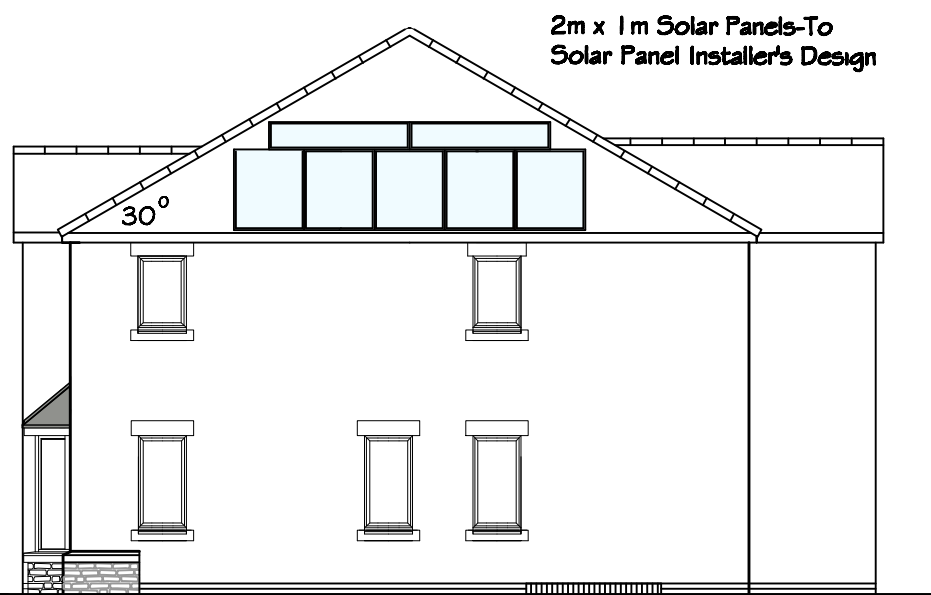
High performance Black Ash wood effect double glazed uPVC casement.

DOORS:

High performance Black Ash wood effect uPVC door & frame.



REAR ELEVATION og = obscure glazed



SIDE ELEVATION

REVISIONS:

Project: 2 NEW DETACHED HOUSES JESSOP CLOSE, ROGERSTONE, NEWPORT		
Drawing: PLOT 2 ELEVATIONS		
Scale: 1:100 @ A3	Date: April 2024	Drawn:
Drawing No: PL- JP - 07		Rev: