

Geotechnical & Geoenvironmental Specialists

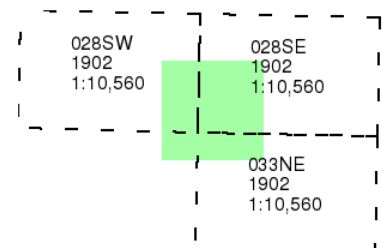
### Monmouthshire

Published 1902

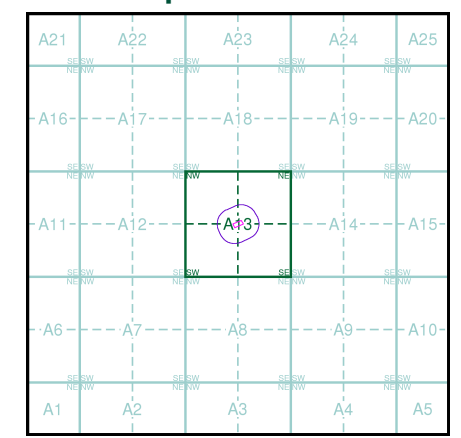
Source map scale - 1:10,560

The historical maps shown were reproduced from maps predominantly held at the scale adopted for England, Wales and Scotland in the 1840's. In 1854 the 1:2,500 scale was adopted for mapping urban areas; these maps were used to update the 1:10,560 maps. The published date given therefore is often some years later than the surveyed date. Before 1938, all OS maps were based on the Cassini Projection, with independent surveys of a single county or group of counties, giving rise to significant inaccuracies in outlying areas. In the late 1940's, a Provisional Edition was produced, which updated the 1:10,560 mapping from a number of sources. The maps appear unfinished - with all military camps and other strategic sites removed. These maps were initially overprinted with the National Grid. In 1970, the first 1:10,000 maps were produced using the Transverse Mercator Projection. The revision process continued until recently, with new editions appearing every 10 years or so for urban areas.

### Map Name(s) and Date(s)



### Historical Map - Slice A



### Order Details

Order Number: 362873452\_1\_1  
 Customer Ref: TF-24-614-CA  
 National Grid Reference: 327710, 188520  
 Slice: A  
 Site Area (Ha): 0.16  
 Search Buffer (m): 1000

### Site Details

Site at 327700, 188530



Tel: 0844 844 9952  
 Fax: 0844 844 9951  
 Web: www.envirocheck.co.uk



Geotechnical & Geoenvironmental Specialists

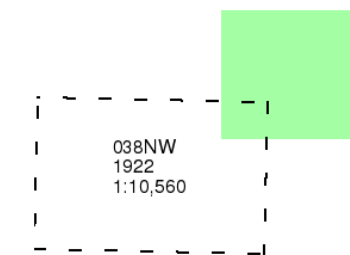
### Glamorganshire

Published 1922

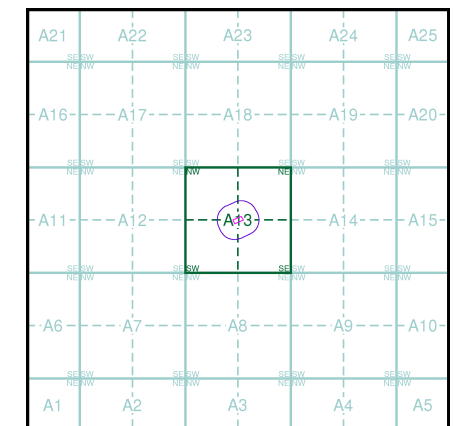
Source map scale - 1:10,560

The historical maps shown were reproduced from maps predominantly held at the scale adopted for England, Wales and Scotland in the 1840's. In 1854 the 1:2,500 scale was adopted for mapping urban areas; these maps were used to update the 1:10,560 maps. The published date given therefore is often some years later than the surveyed date. Before 1938, all OS maps were based on the Cassini Projection, with independent surveys of a single county or group of counties, giving rise to significant inaccuracies in outlying areas. In the late 1940's, a Provisional Edition was produced, which updated the 1:10,560 mapping from a number of sources. The maps appear unfinished - with all military camps and other strategic sites removed. These maps were initially overprinted with the National Grid. In 1970, the first 1:10,000 maps were produced using the Transverse Mercator Projection. The revision process continued until recently, with new editions appearing every 10 years or so for urban areas.

### Map Name(s) and Date(s)



### Historical Map - Slice A



### Order Details

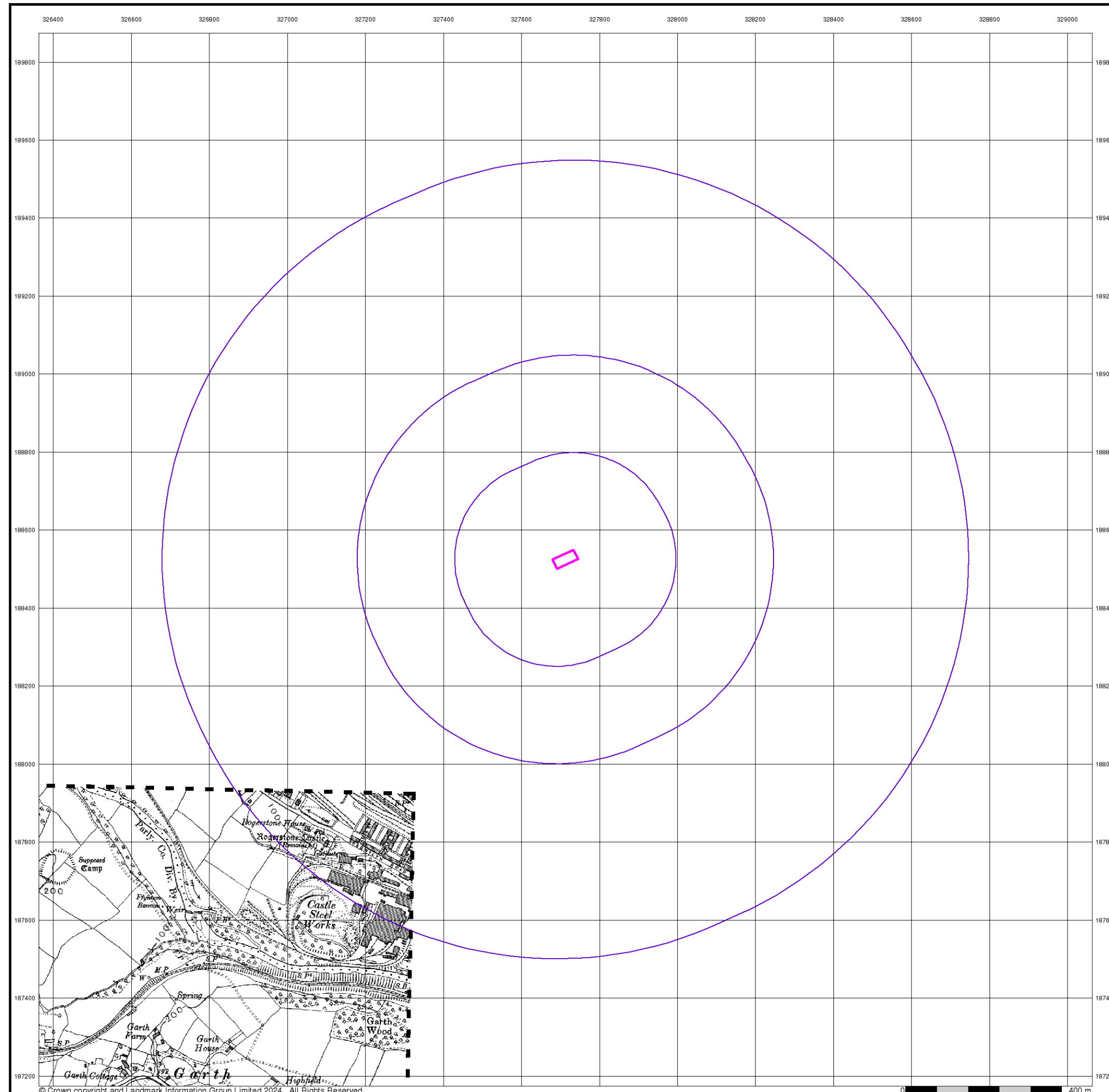
Order Number: 362873452\_1\_1  
Customer Ref: TF-24-614-CA  
National Grid Reference: 327710, 188520  
Slice: A  
Site Area (Ha): 0.16  
Search Buffer (m): 1000

### Site Details

Site at 327700, 188530



Tel: 0844 844 9952  
Fax: 0844 844 9951  
Web: www.envirocheck.co.uk





Geotechnical & Geoenvironmental Specialists

### Monmouthshire

Published 1922

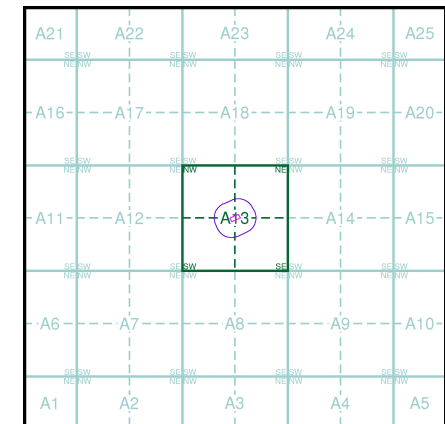
Source map scale - 1:10,560

The historical maps shown were reproduced from maps predominantly held at the scale adopted for England, Wales and Scotland in the 1840's. In 1854 the 1:2,500 scale was adopted for mapping urban areas; these maps were used to update the 1:10,560 maps. The published date given therefore is often some years later than the surveyed date. Before 1938, all OS maps were based on the Cassini Projection, with independent surveys of a single county or group of counties, giving rise to significant inaccuracies in outlying areas. In the late 1940's, a Provisional Edition was produced, which updated the 1:10,560 mapping from a number of sources. The maps appear unfinished - with all military camps and other strategic sites removed. These maps were initially overprinted with the National Grid. In 1970, the first 1:10,000 maps were produced using the Transverse Mercator Projection. The revision process continued until recently, with new editions appearing every 10 years or so for urban areas.

### Map Name(s) and Date(s)

028SW 1922 1:10,560	028SE 1922 1:10,560
	033NE 1922 1:10,560

### Historical Map - Slice A



### Order Details

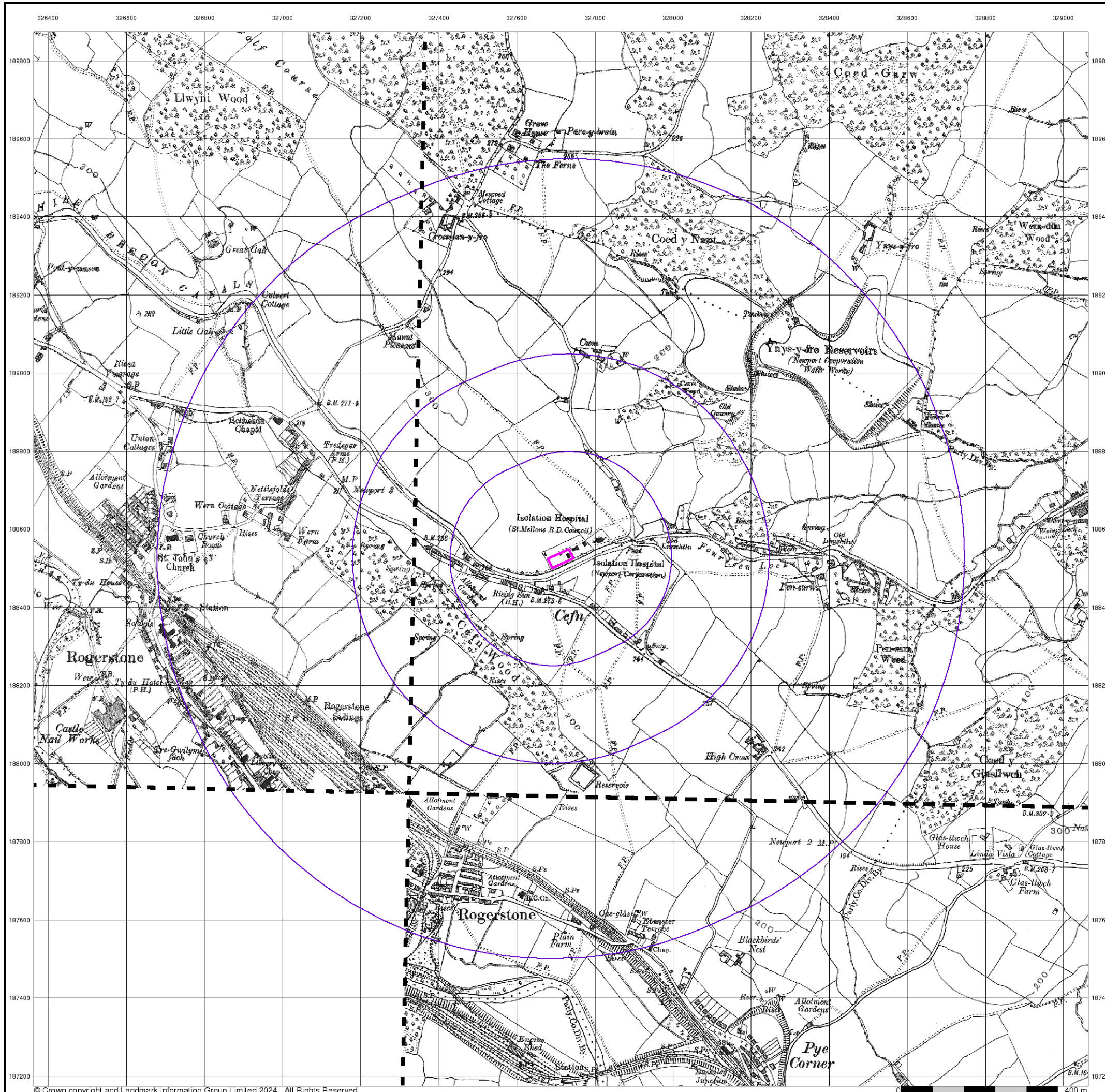
Order Number: 362873452\_1\_1  
 Customer Ref: TF-24-614-CA  
 National Grid Reference: 327710, 188520  
 Slice: A  
 Site Area (Ha): 0.16  
 Search Buffer (m): 1000

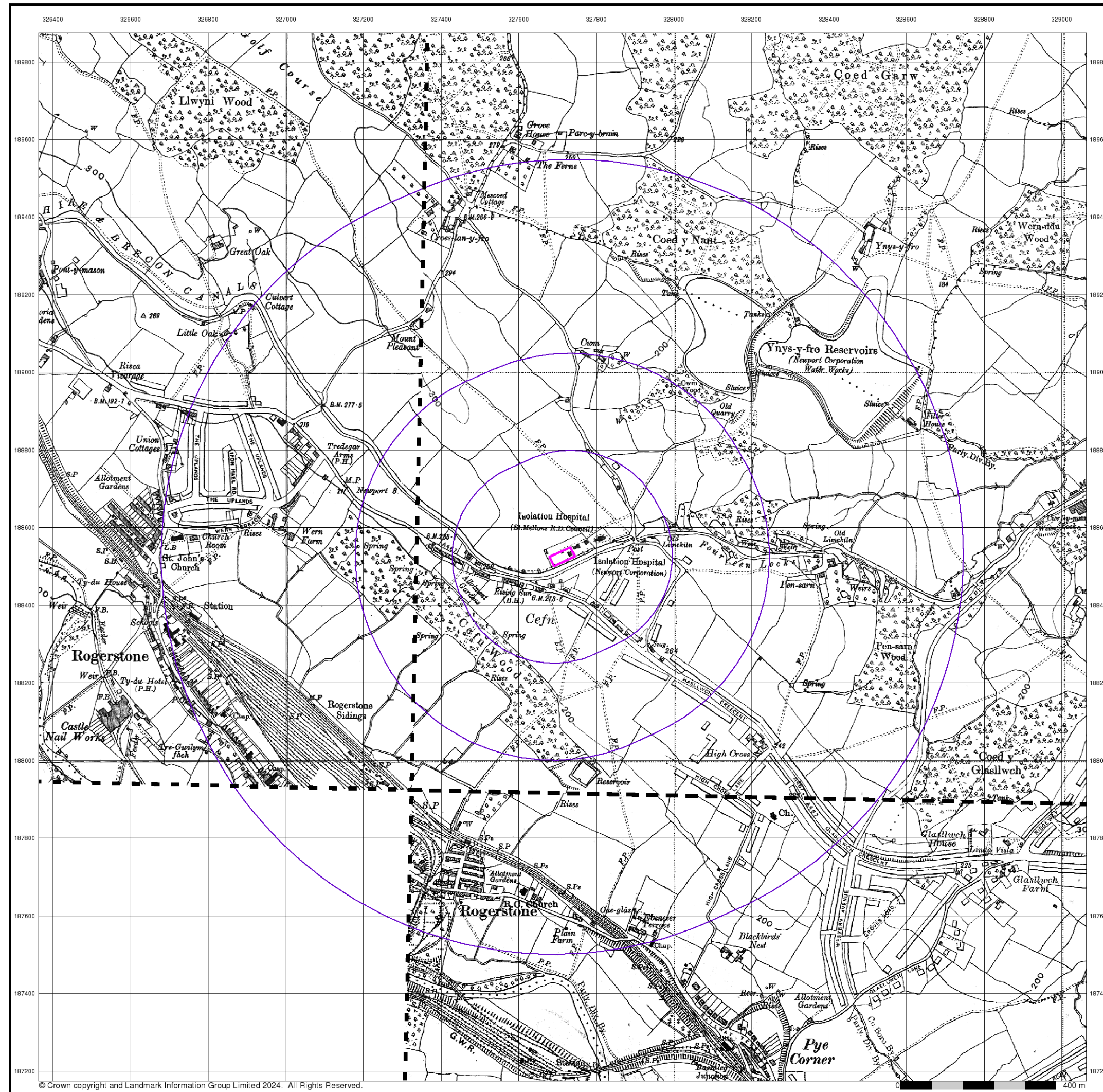
### Site Details

Site at 327700, 188530



Tel: 0844 844 9952  
 Fax: 0844 844 9951  
 Web: www.envirocheck.co.uk





Geotechnical & Geoenvironmental Specialists

### Monmouthshire

Published 1938

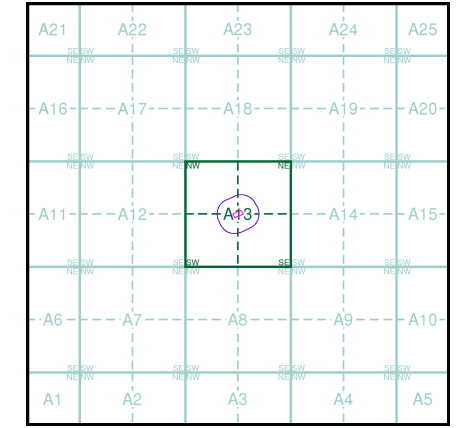
Source map scale - 1:10,560

The historical maps shown were reproduced from maps predominantly held at the scale adopted for England, Wales and Scotland in the 1840's. In 1854 the 1:2,500 scale was adopted for mapping urban areas; these maps were used to update the 1:10,560 maps. The published date given therefore is often some years later than the surveyed date. Before 1938, all OS maps were based on the Cassini Projection, with independent surveys of a single county or group of counties, giving rise to significant inaccuracies in outlying areas. In the late 1940's, a Provisional Edition was produced, which updated the 1:10,560 mapping from a number of sources. The maps appear unfinished - with all military camps and other strategic sites removed. These maps were initially overprinted with the National Grid. In 1970, the first 1:10,000 maps were produced using the Transverse Mercator Projection. The revision process continued until recently, with new editions appearing every 10 years or so for urban areas.

### Map Name(s) and Date(s)

028SW 1938 1:10,560	028SE 1938 1:10,560
	033NE 1938 1:10,560

### Historical Map - Slice A



### Order Details

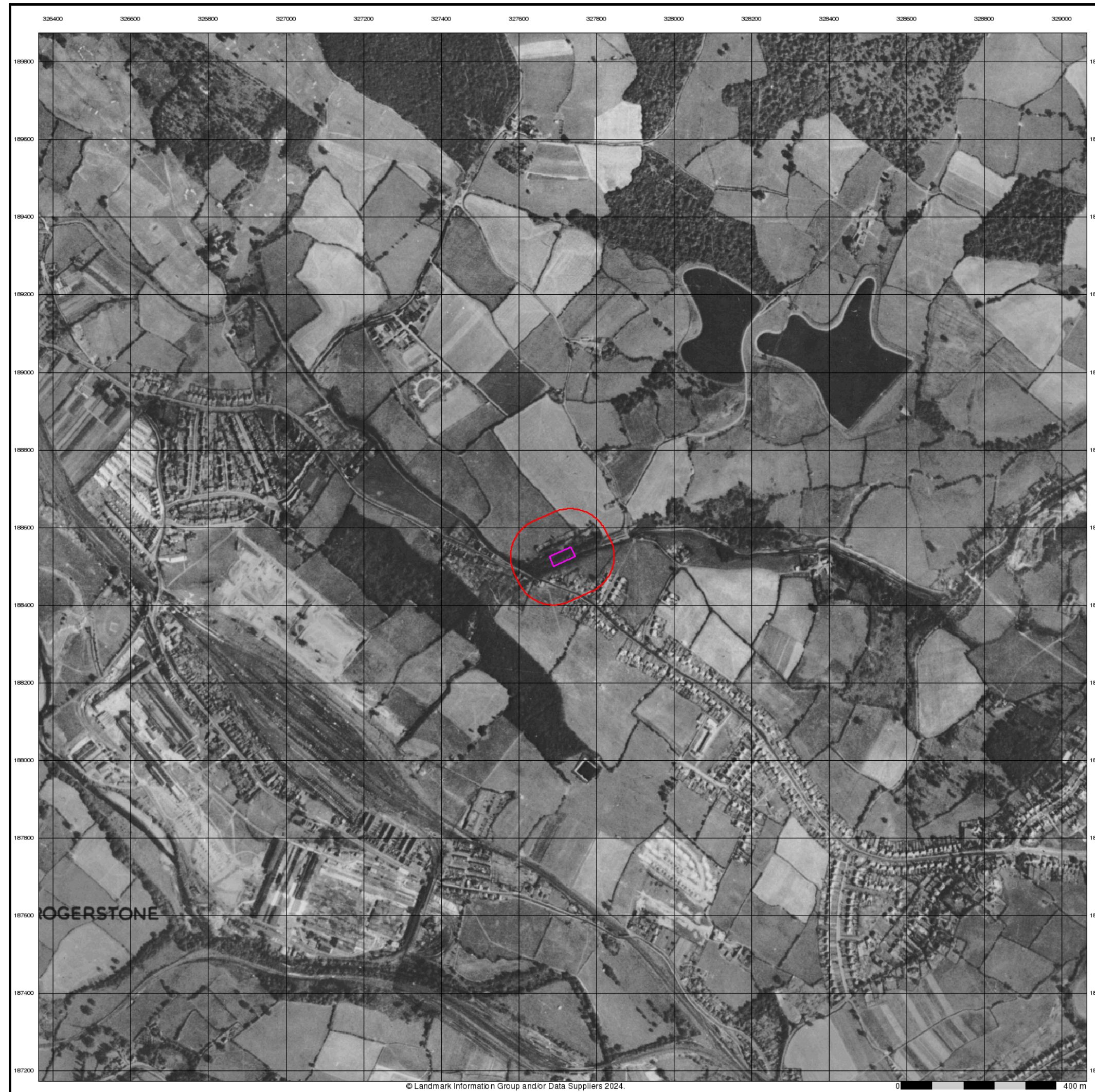
Order Number: 362873452\_1\_1  
 Customer Ref: TF-24-614-CA  
 National Grid Reference: 327710, 188520  
 Slice: A  
 Site Area (Ha): 0.16  
 Search Buffer (m): 1000

### Site Details

Site at 327700, 188530



Tel: 0844 844 9952  
 Fax: 0844 844 9951  
 Web: www.envirocheck.co.uk

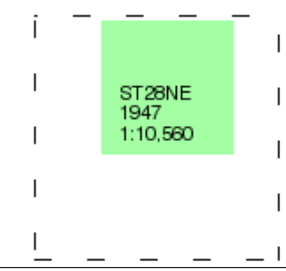


Geotechnical & Geoenvironmental Specialists  
**Historical Aerial Photography**  
**Published 1947**  
**Source map scale - 1:10,560**

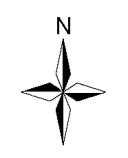
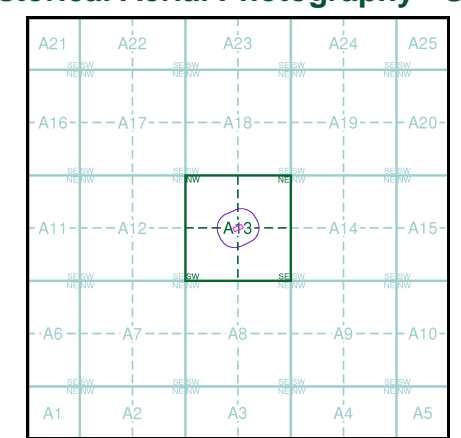
The Historical Aerial Photos were produced by the Ordnance Survey at a scale of 1:1,250 and 1:10,560 from Air Force photography. They were produced between 1944 and 1951 as an interim measure, pending preparation of conventional mapping, due to post war resource shortages. New security measures in the 1950's meant that every photograph was re-checked for potentially unsafe information with security sites replaced by fake fields or clouds. The original editions were withdrawn and only later made available after a period of fifty years although due to the accuracy of the editing, without viewing both revisions it is not easy to spot the edits. Where available Landmark have included both revisions.

© Landmark Information Group and/or Data Suppliers 2010.

**Map Name(s) and Date(s)**



**Historical Aerial Photography - Slice A**



**Order Details**

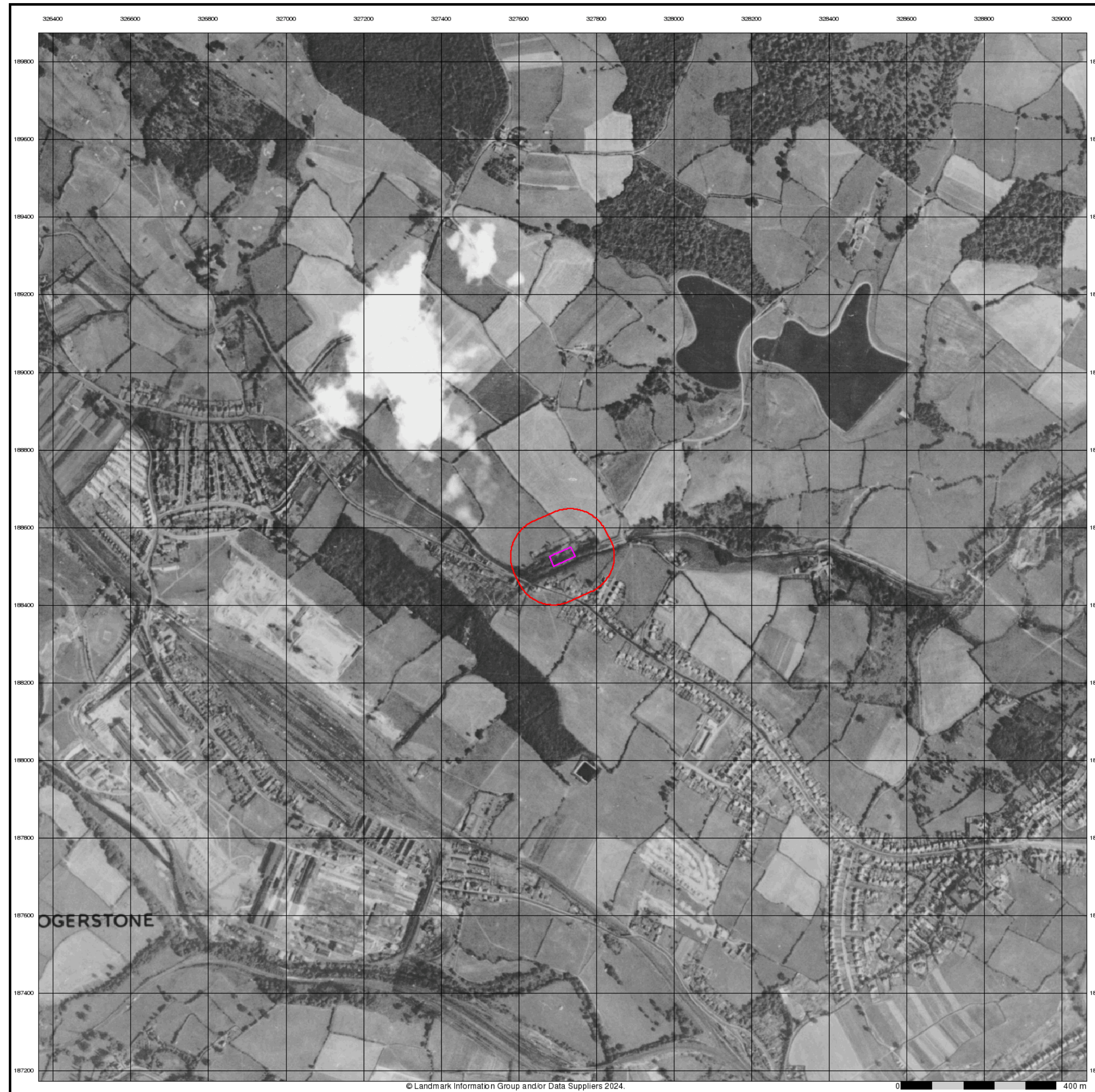
Order Number: 362873452\_1\_1  
 Customer Ref: TF-24-614-CA  
 National Grid Reference: 327710, 188520  
 Slice: A  
 Site Area (Ha): 0.16  
 Search Buffer (m): 1000

**Site Details**

Site at 327700, 188530



Tel: 0844 844 9952  
 Fax: 0844 844 9951  
 Web: www.envirocheck.co.uk



Geotechnical & Geoenvironmental Specialists

## Historical Aerial Photography

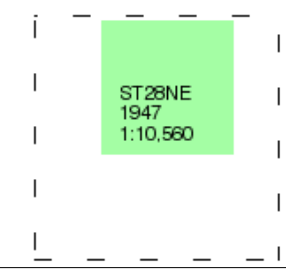
Published 1947

Source map scale - 1:10,560

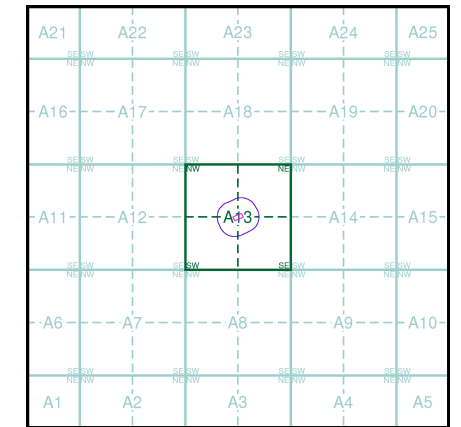
The Historical Aerial Photos were produced by the Ordnance Survey at a scale of 1:1,250 and 1:10,560 from Air Force photography. They were produced between 1944 and 1951 as an interim measure, pending preparation of conventional mapping, due to post war resource shortages. New security measures in the 1950's meant that every photograph was re-checked for potentially unsafe information with security sites replaced by fake fields or clouds. The original editions were withdrawn and only later made available after a period of fifty years although due to the accuracy of the editing, without viewing both revisions it is not easy to spot the edits. Where available Landmark have included both revisions.

© Landmark Information Group and/or Data Suppliers 2010.

### Map Name(s) and Date(s)



### Historical Aerial Photography - Slice A



### Order Details

Order Number: 362873452\_1\_1  
 Customer Ref: TF-24-614-CA  
 National Grid Reference: 327710, 188520  
 Slice: A  
 Site Area (Ha): 0.16  
 Search Buffer (m): 1000

### Site Details

Site at 327700, 188530



Tel: 0844 844 9952  
 Fax: 0844 844 9951  
 Web: www.envirocheck.co.uk



Geotechnical & Geoenvironmental Specialists

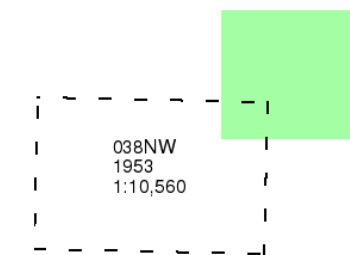
### Glamorganshire

Published 1953

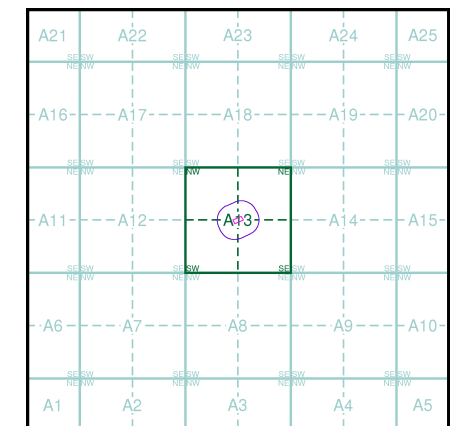
Source map scale - 1:10,560

The historical maps shown were reproduced from maps predominantly held at the scale adopted for England, Wales and Scotland in the 1840's. In 1854 the 1:2,500 scale was adopted for mapping urban areas; these maps were used to update the 1:10,560 maps. The published date given therefore is often some years later than the surveyed date. Before 1938, all OS maps were based on the Cassini Projection, with independent surveys of a single county or group of counties, giving rise to significant inaccuracies in outlying areas. In the late 1940's, a Provisional Edition was produced, which updated the 1:10,560 mapping from a number of sources. The maps appear unfinished - with all military camps and other strategic sites removed. These maps were initially overprinted with the National Grid. In 1970, the first 1:10,000 maps were produced using the Transverse Mercator Projection. The revision process continued until recently, with new editions appearing every 10 years or so for urban areas.

### Map Name(s) and Date(s)



### Historical Map - Slice A



### Order Details

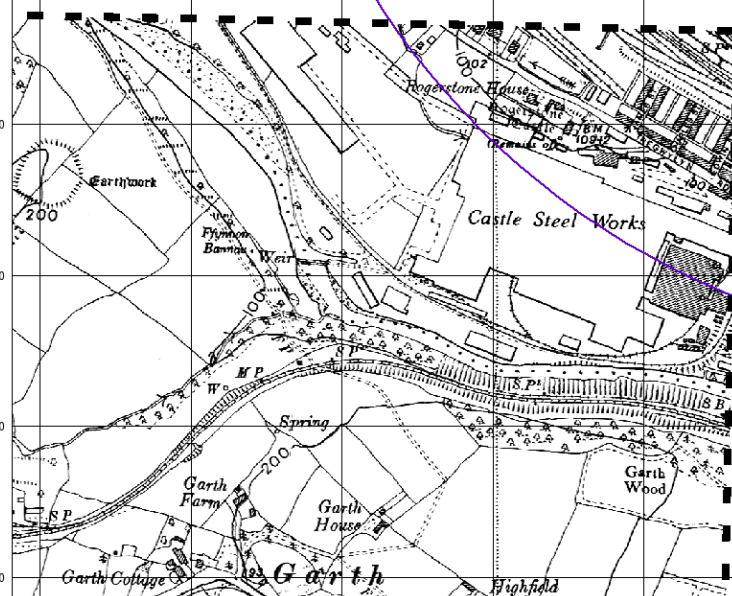
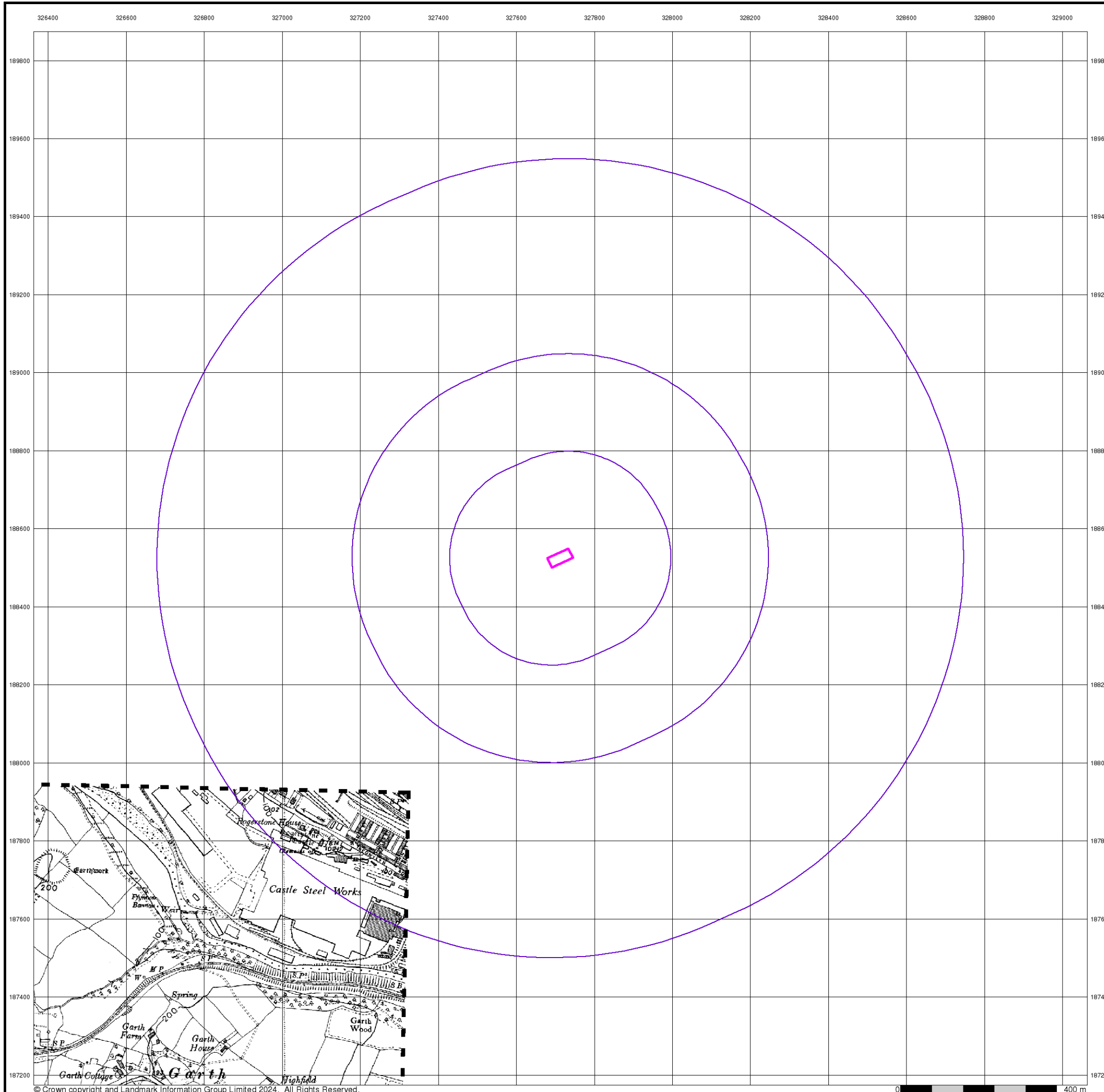
Order Number: 362873452\_1\_1  
Customer Ref: TF-24-614-CA  
National Grid Reference: 327710, 188520  
Slice: A  
Site Area (Ha): 0.16  
Search Buffer (m): 1000

### Site Details

Site at 327700, 188530



Tel: 0844 844 9952  
Fax: 0844 844 9951  
Web: www.envirocheck.co.uk



© Crown copyright and Landmark Information Group Limited 2024. All Rights Reserved.

