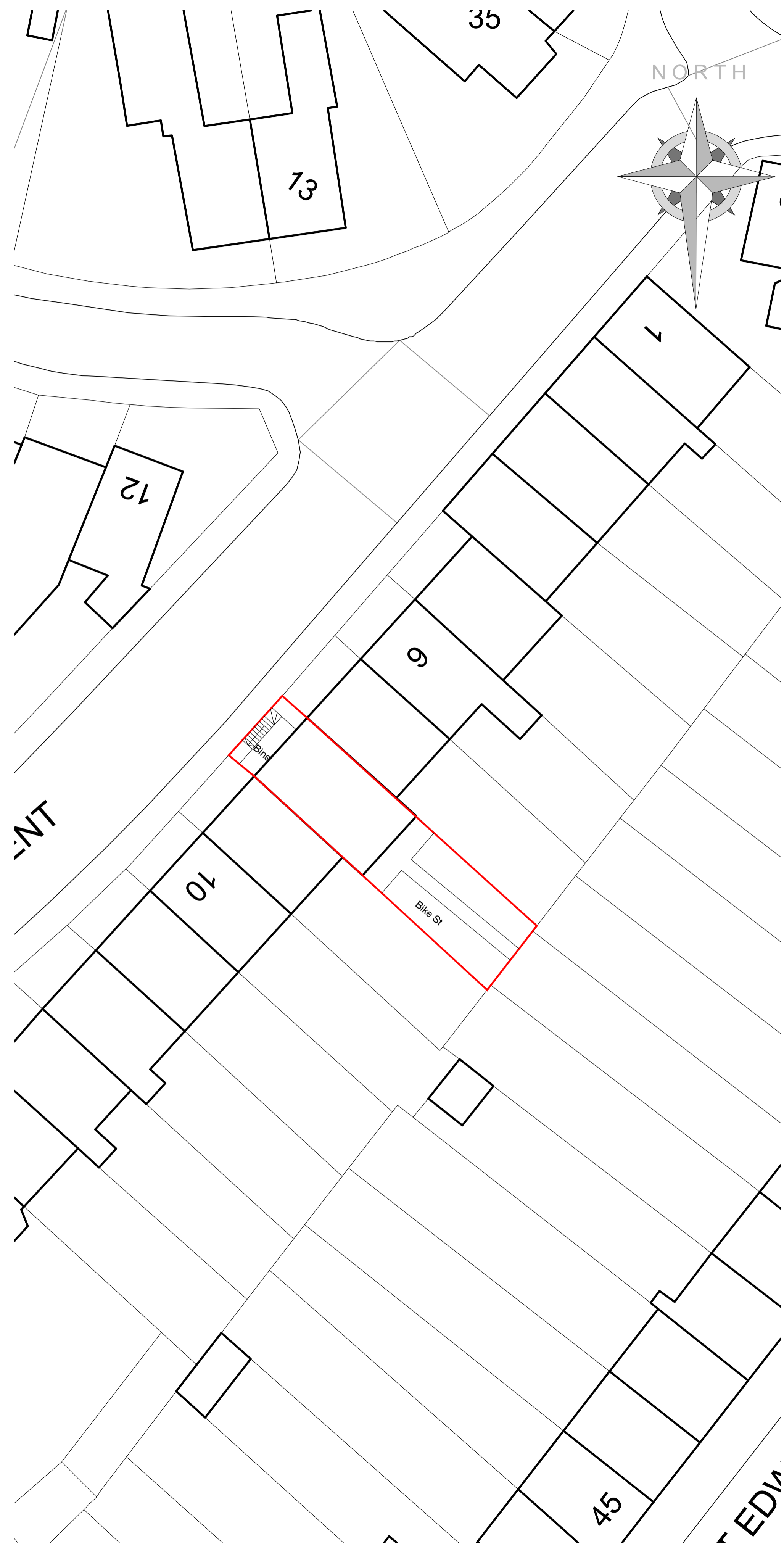
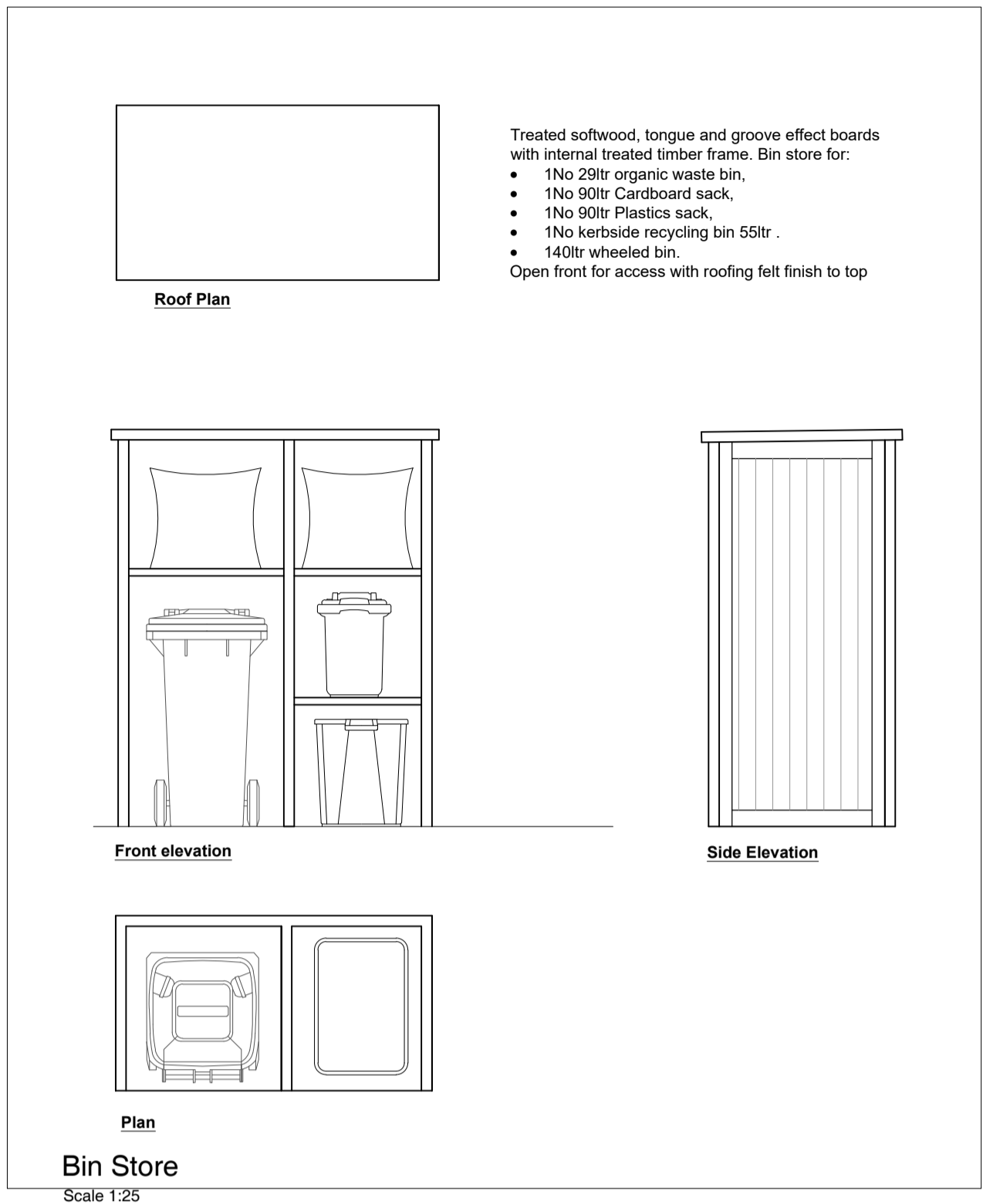




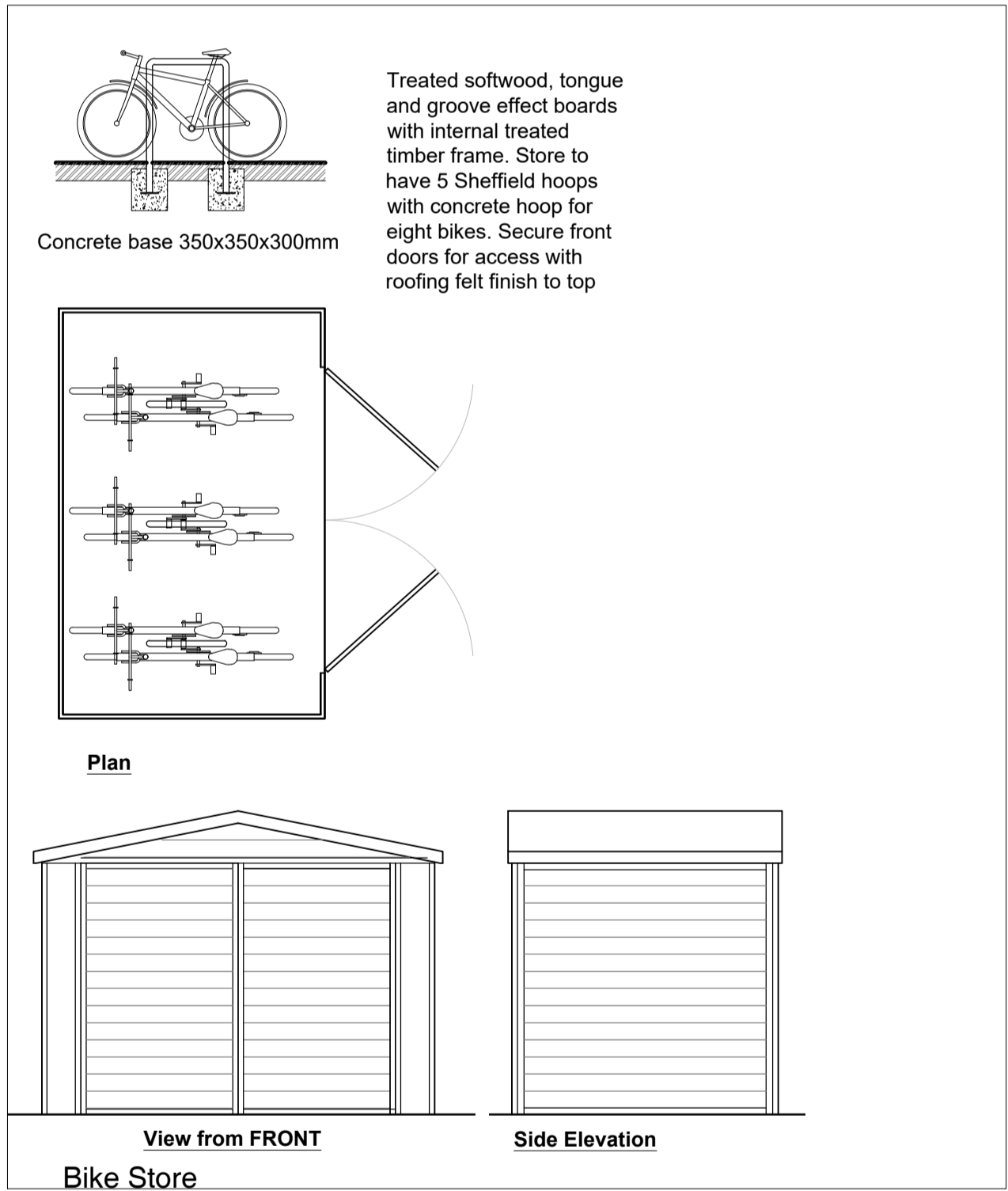
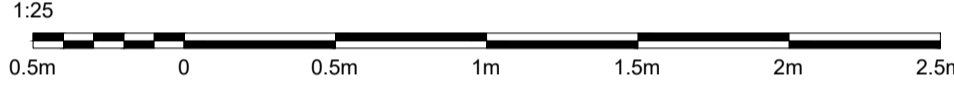
Existing Block Plan



Proposed Block Plan



- Treated softwood, tongue and groove effect boards with internal treated timber frame. Bin store for:
- 1 No 29ltr organic waste bin,
  - 1 No 90ltr Cardboard sack,
  - 1 No 90ltr Plastics sack,
  - 1 No kerbside recycling bin 55ltr,
  - 1 40ltr wheeled bin.
- Open front for access with roofing felt finish to top



- Treated softwood, tongue and groove effect boards with internal treated timber frame. Store to have 5 Sheffield hoops with concrete hoop for eight bikes. Secure front doors for access with roofing felt finish to top



PROJECT:  
8 Clyffard Cres  
Newport

TITLE:  
Existing & Proposed Block Plans

SCALE: 1:200 @ A1      DATE: Oct 25      DRAWN BY: JM

DRAWING NUMBER:  
4344.PL.02      REVISION:

