

**GROUND FLOOR PLAN**

**STORAGE SCHEDULE:**

**4P2B HOUSE TYPE 1**

GROUND FLOOR:

|             |                    |
|-------------|--------------------|
| STORE:      | 0.98M <sup>2</sup> |
| U/S STAIRS: | 1.60M <sup>2</sup> |

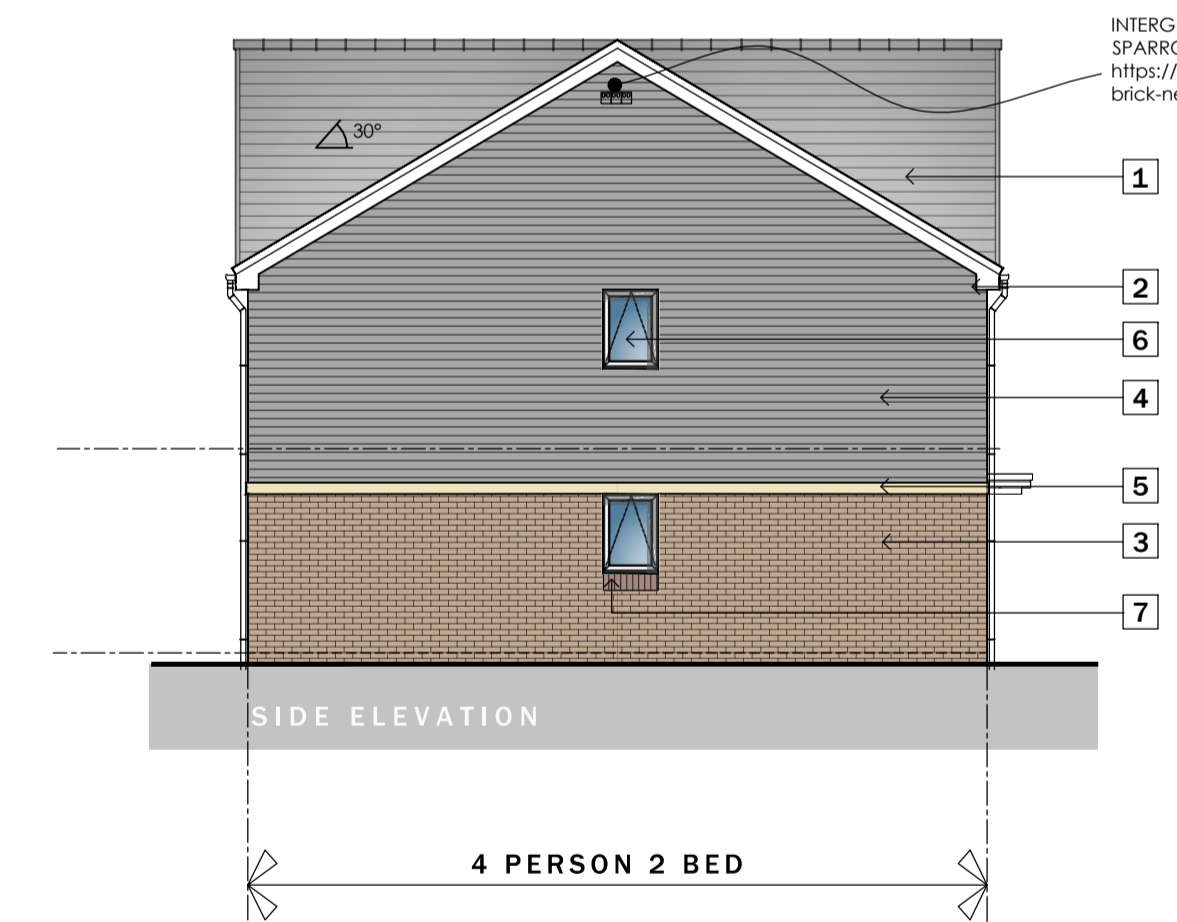
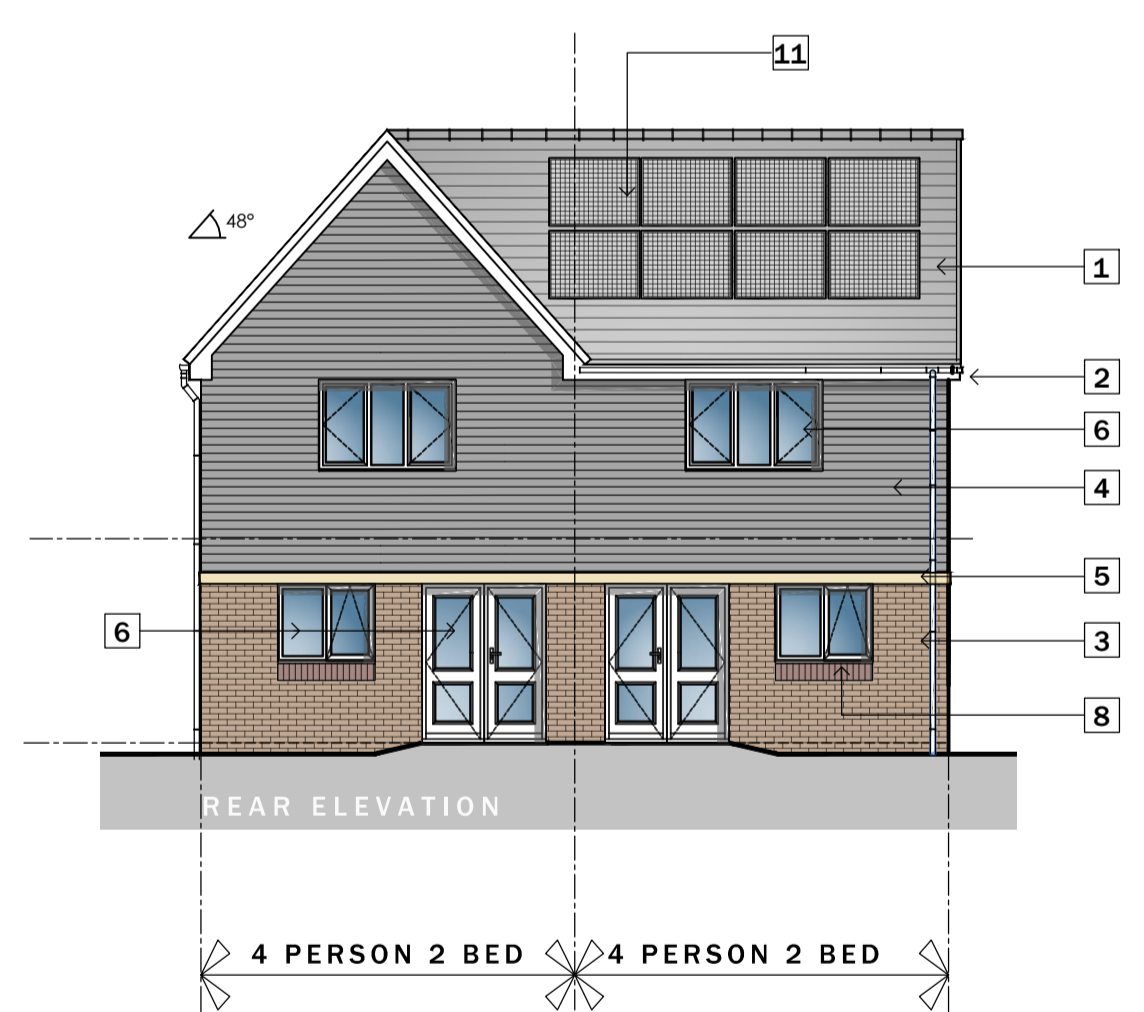
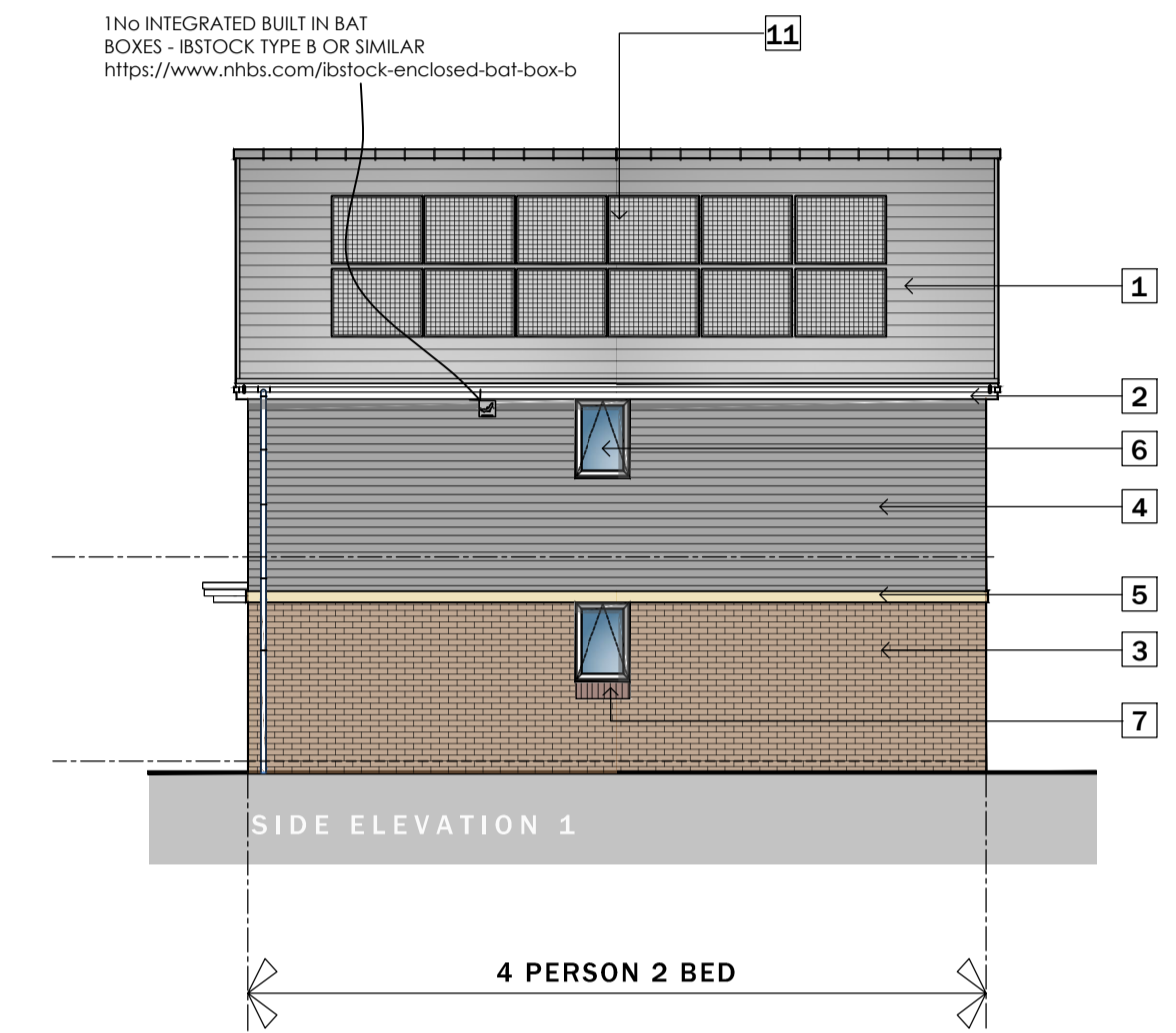
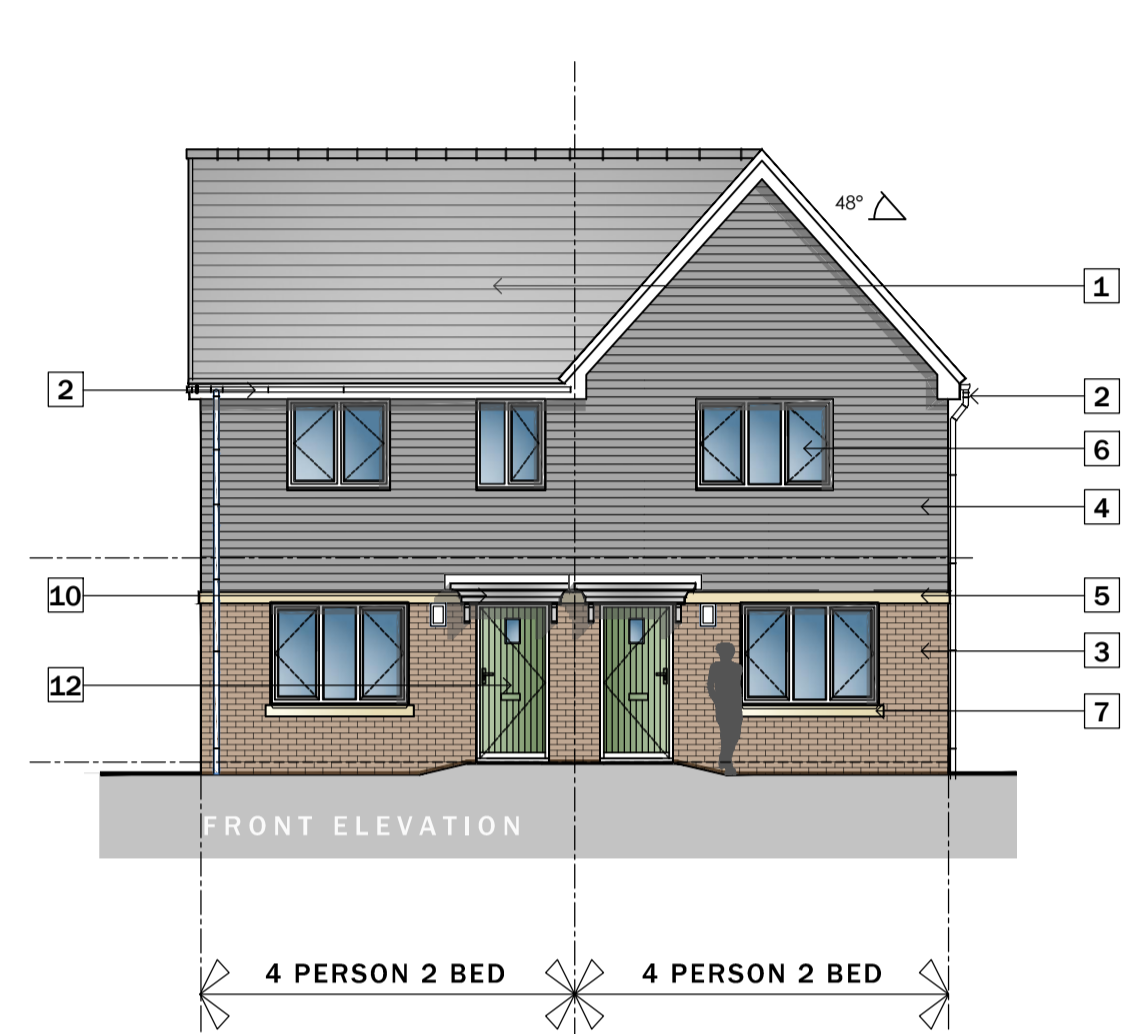
FIRST FLOOR:

|        |                    |
|--------|--------------------|
| AC:    | 0.95M <sup>2</sup> |
| STORE: | 1.06M <sup>2</sup> |

TOTAL STORAGE PROVIDED - 4.59M<sup>2</sup>

TOTAL STORAGE REQUIRED - 2.5M<sup>2</sup>

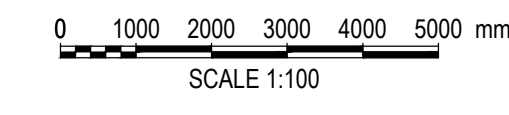
TOTAL STORAGE EXCESS - 2.09M<sup>2</sup>



**ELEVATION KEY**

- |   |  |    |   |
|---|--|----|---|
| 1 | GREY CONCRETE TILE WITH MATCHING RIDGE.                                | 8  | DARK RED FACING BRICKWORK SOLDIER COURSE CILLS TO REAR ELEVATIONS.      |
| 2 | WHITE UPVC FASCIAS, SOFFITES & BARGEBOARDS WITH BLACK RAINWATER GOODS. | 9  | SMOOTH TRUH COLOUR OFF WHITE RENDER SYSTEM                              |
| 3 | RED MULTI CLAY FACING BRICKWORK.                                       | 10 | GRP PORCH CANOPY OVER   |
| 4 | FIBRE CEMENT BOARD LAID HORIZONTALLY - COLOUR TO BE AGREED             | 11 | PV PANELS (EXACT LOCATIONS DEPENDANT)                                   |
| 5 | RECON STONE BAND COURSE  | 12 | SBD COMPLIANT GRP DOOR SETS - VARYING COLOURS THROUGH DEVELOPMENT       |
| 6 | SBD GOLD STANDARD WHITE UPVC WINDOWS AND DOOR SETS                     | 13 | GALVANISED STEEL BALCONY SYSTEM WITH STEEL RAILINGS - ALL PAINTED WHITE |
| 7 | RECON STONE CILLS TO FRONT AND KEY SIDE ELEVATIONS.                    | 14 | BUFF COLOURED BANDING IN STRETCHER COURSE                               |

**PLOTS 5 - 6**  
**4P 2B HOUSES**  
**Scale 1:100**



**FORMER OPEN HEARTH PUB, NEWPORT**  
**PLANS & ELEVATIONS - PLOTS 5 - 6**

Drawing Purpose  
 PLANNING

|           |                               |               |                              |       |            |          |     |
|-----------|-------------------------------|---------------|------------------------------|-------|------------|----------|-----|
| Client    | Willis Construction for Melin | Drawing No    | LT2401.04.102                | Scale | 1:100 @ A1 | Revision | -   |
| Job Title | Open Hearth, Ringland         | Drawing Title | Plans & Elev's - PLOTS 5 - 6 | Date  | Oct '24    | Checked  | kml |

Revisions  
 REV. A FEB 25  
 PLANS UPDATED TO SUIT WAG COMMENTS

Do not scale from this drawing. The users of this drawing shall check all dimensions & report all errors and omissions to LeTrucco Design. This drawing is copyright. It must not be copied, used or disclosed to third parties without prior permission of LeTrucco Design.



Suite 7, 35 Stow Park Circle  
 Newport, NP20 4HF

Tel: 07710390800 / 07710390801  
 info@letruccodesign.co.uk  
 www.letruccodesign.co.uk