



Front Elevation
South Facing Fronting Bridge St

← Cambrian Rd Bridge St →



Side Elevation
East Facing Fronting Cambrian Rd



Courtyard Elevation
East Facing

← Access Ln



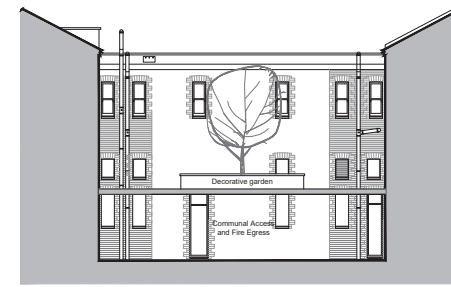
Rear Elevation
North Facing Courtyard

← Cambrian Rd →



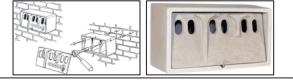
Courtyard Elevation
West Facing

← Access Ln →




Courtyard Elevation
South Facing

Sparrow Terrace
Material: SCHWEGLER wood-concrete.
Installation height: 2 - 7metres above ground level.
Dimensions of the three brood chambers: W 10.5 x H 16 x D 15 cm
External dimensions: W 43 x H 24.5 x D 20 cm.



Beumaris Woodstone Bat Box
Material: SCHWEGLER wood-concrete.
Installation height: Suitable for attaching to external walls and should be sited as high up on the facade as possible, at a height of at least 3m from the ground.
External dimensions: W 39 x H 29 x D 6 cm.



PROJECT:
Tredegar Chambers
Proposed Refurbishment

TITLE:
Proposed Elevations

SCALE: 1:100 @ A1 DATE: July 2024 DRAWN BY: ams
DRAWING NUMBER: 4308.PL.25 REVISION: A

