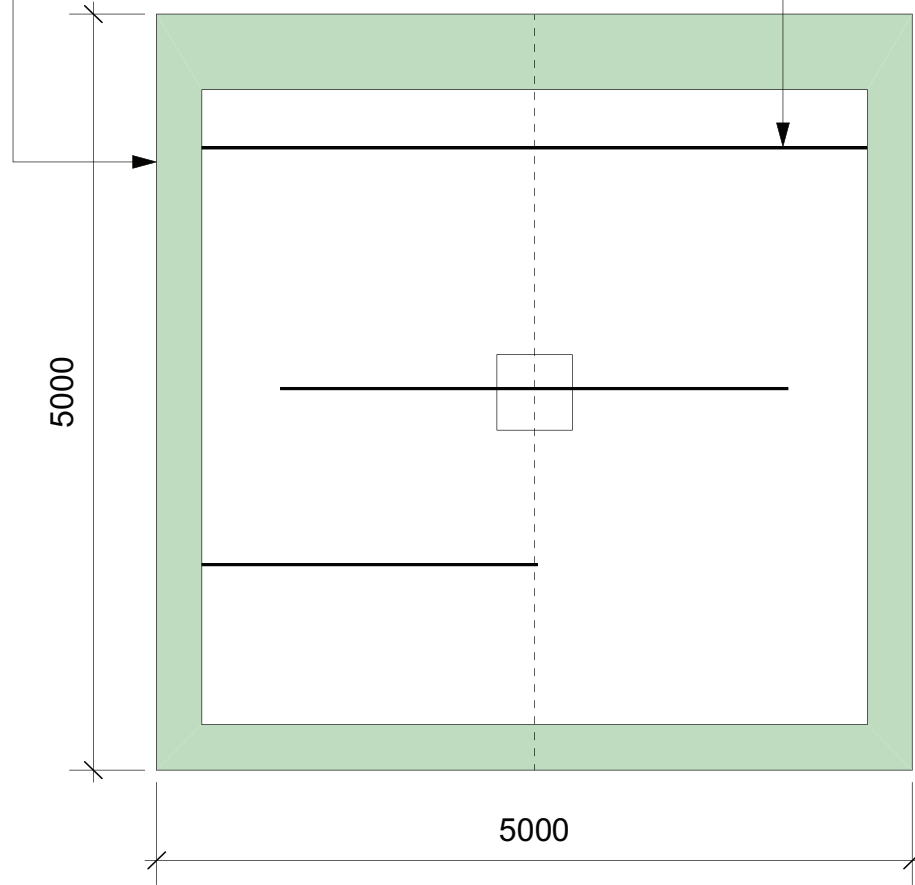
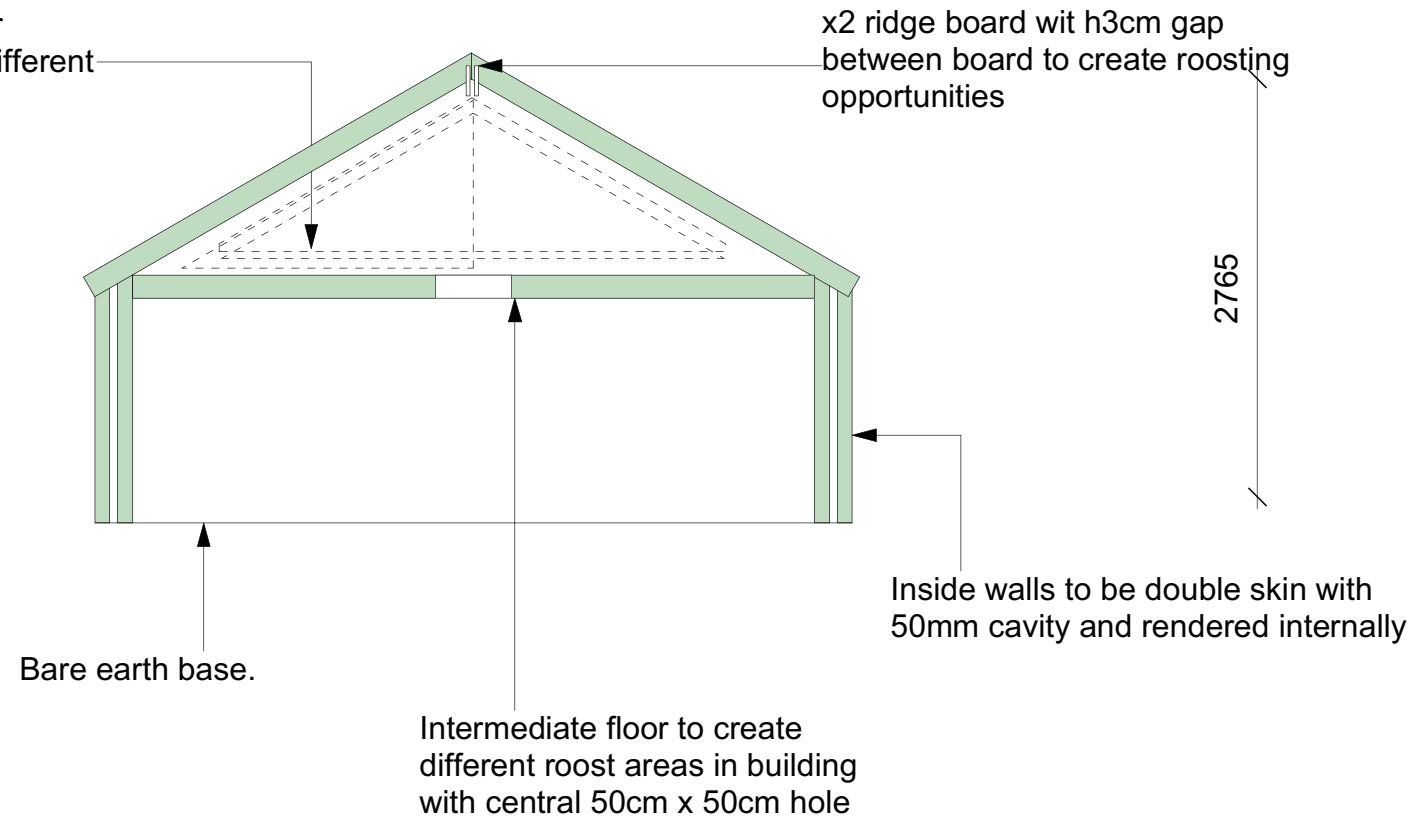


Roof tiled with slated with traditional hessian roofing felt. **BREATHABLE MEMBRANES MUST NOT BE USED**

Block walls rendered internally and clad in locally sourced larch waney edge cladding



x3 triangular OSB or plywood baffles of different sizes painted black

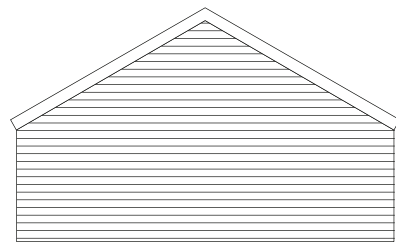


x2 ridge board with h3cm gap between board to create roosting opportunities

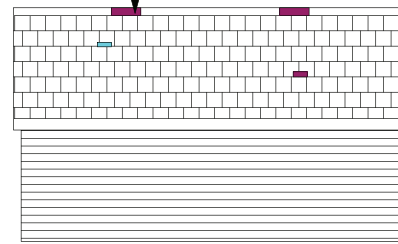
x2 modified ridge tiles to allow bat access into the ridge. x2 small mortar blockages inside the ridge to prevent draughts. The south-west end ridge tile to be left open to allow bat access.

Hopper bat entrance 30cm x 20cm, with a 50cm long chute. Chute lined with metal to deter birds, with a 45 degree angle into the house

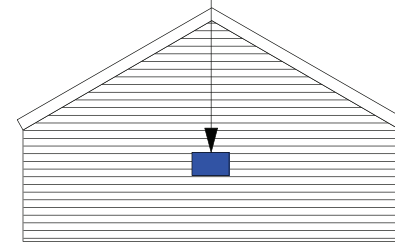
Modified access tiles x2 on each pitch with corresponding roofing felt cut, (the cut adjacent to rafters to allow bats to crawl up the rafter and out via the cut)



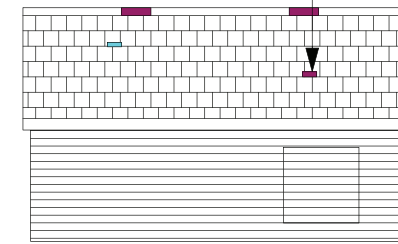
West Elevation



South Elevation



East Elevation



North Elevation



Tŷ Green Ltd.

Tel: 07427657573

spence@tygreen.co.uk

www.tygreen.co.uk

Cefn Llogell Farm, Newport, NP10 8TR



Site: Land North of Rock Cottage

Drawing No. TG2203-24

Project No. TG2203

Drawn. SG

Title: Bat House

Scale at A3 1:50/ 1:100

Date July 2024

Revision. B