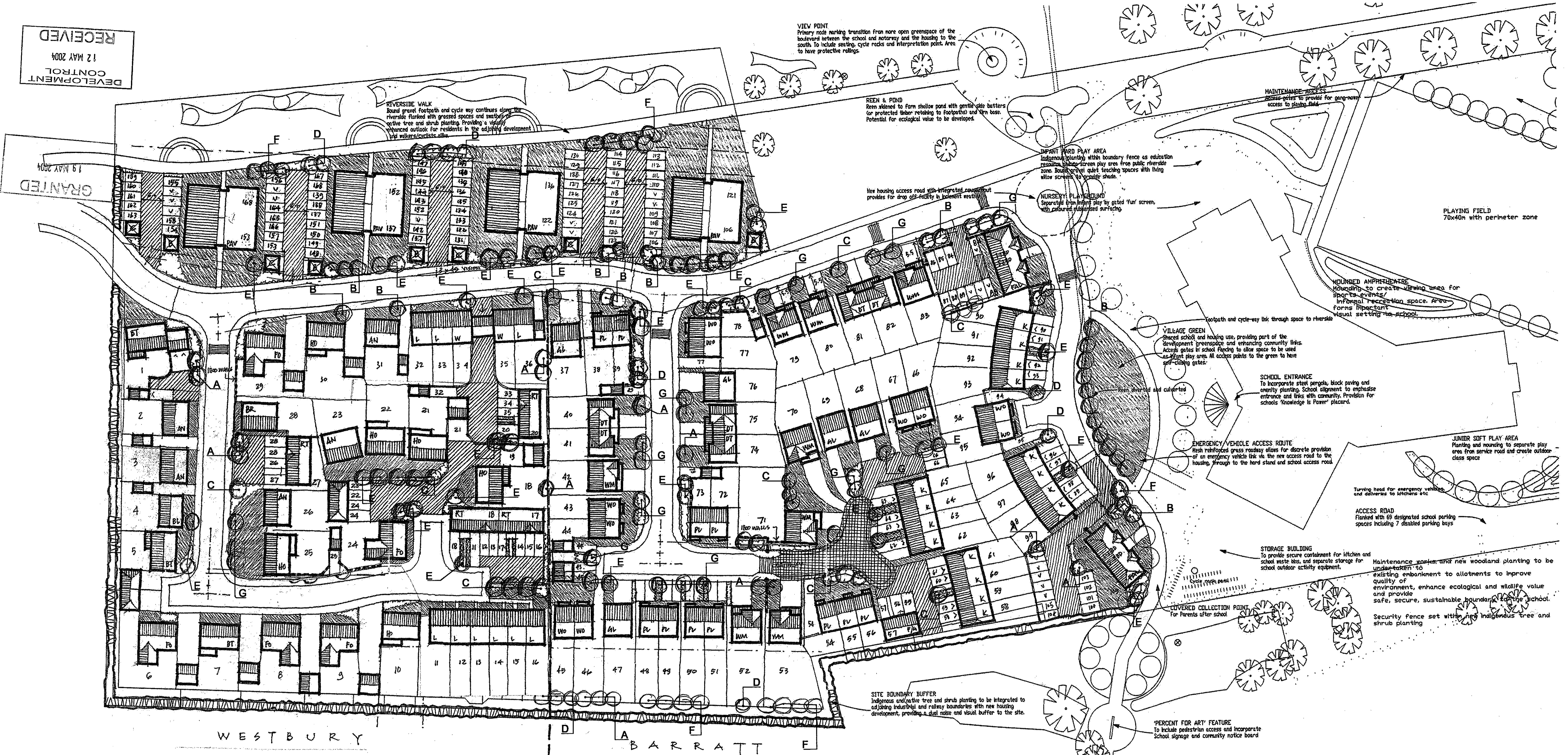


RECEIVED
17 MAY 2004
DEVELOPMENT
CONTROL



WESTBURY
BARRATT

Landscape Specification

Ground Preparation

Protection of existing woodland, trees and hedges against damage to be in accordance with the BS 5837:1991 - Trees in relation to site construction. Protective fence to be 1.2m high chestnut pale or similar approved.

Excavations to B.S. 8000 part 1: 1989. Excavated material removed off-site; good quality subsoil/topsoil stored on-site for re-use.

Landscape planting areas to have a minimum depth of soil of 500mm and grass areas will have 300mm.

Loosen formation level with single line ripper, driven 450mm deep at 1m centres, when ground conditions are dry.

Imported soils to be of a similar type to that existing on site so that species currently in the seedbank on site area able to recolonise.

Supply approved imported subsoil to B.S. 3882: 1994 - Economy Grade to make up any deficiency in on-site subsoil. Spread and level to depth of: 200mm for planting areas 200mm for grass areas

Supply approved imported topsoil to B.S. 3882: 1994 - General Purpose Grade to make up for any deficiency in on-site topsoil. Spread and level to depth of: 300mm for planting areas 100mm for grass areas

Excavate planting pits to the following dimensions:
Standard Trees: 1000 x 1000 x 500mm depth
Feathered Trees: 750 x 750 x 500mm depth
Shrubs: 300 x 300 x 300mm depth

Backfill tree pits with 100/200mm depth subsoil and 400mm topsoil including Melcourt Topgrow peat free planting compost at a rate of 0.125m³/pit.

Backfill shrub pits with topsoil including Melcourt Topgrow peat

Cultivate all landscape areas to a loose and friable lith suitable for grass seeding or planting.

Collect and remove from site all stones, builders rubble and other deleterious material over 50mm in any dimension.

Grass Areas:
Low maintenance grass areas to be sown at a rate of 5g/m². All arisings from grass cutting to be removed from site to maintain low nutrient levels.

Planting Areas:
Plant specification to be in accordance with the HTA National Plant Specification: 1997.

Supply and plant, incorporating slow release fertiliser N:P:K-4:19:10 ENMAG or similar approved at the following rates:
Standard Trees: 100g / tree pit
Feathered Trees: 100g / tree pit

Provide and fix tree stakes and ties to the following dimensions:

Standards: overall length 1500; height above ground: 750mm
Feathered: overall length 1250mm; height above ground: 600mm

Provide and spread evenly over all planting areas an organic mulch or similar approved mulch to a depth of 50mm.

Maintenance:
All landscape areas to be maintained in accordance with B.S. 7370 Part 3: 1991 and Part 4: 1993; including weed control, and adjustment to tree stakes and ties.

General Notes:
Exact location of trees to be determined subject to location of services and utilities.

Trees shall not be planted closer to buildings than shown on the drawing (minimum 4.0m).

Substitutions, if made, should be similar in size, form and water demand.

Plants shall be arranged to avoid straight lines and geometric

Tree Specification

Code	Species	Girth	Height	Specification
A	Acer platanoides	12-14cm	350-425cm	Heavy Standard: 2x: B
B	Ainus glutinosa	10-12cm	300-350cm	Selected Standard: 2x: B
C	Fraxinus angustifolia 'Raywood'	12-14cm	350-425cm	Heavy Standard: 3x: B
D	Populus tremula	10-12cm	300-350cm	Selected Standard: 2x: B
E	Prunus padus	10-12cm	300-350cm	Selected Standard: 2x: B
F	Salix alba	10-12cm	300-350cm	Selected Standard: 2x: B
G	Sorbus aucuparia 'Asplenifolia'	10-12cm	300-350cm	Selected Standard: 2x: B

Shrub Specification

Species	Height	Pot size	Specification
Amelanchier canadensis	60-80cm	3L	Branched: 3 brks: C
Cornus alba 'Westonbirt'	60-80cm	3L	Branched: 4 brks: C
Cornus stolonifera 'Flaviramea'	60-80cm	3L	Branched: 4 brks: C
Cotoneaster conspicuus 'Decorus'	40-60cm	2L	Branched: 3 brks: C
Hedera helix hibernica	20-30cm	2L	Several Shoots: 3 brks: C
Lonicera 'Maigreen'	40-60cm	2L	Bushy: 3 brks: C
Rosa rugosa 'Fru Dagmar Hastrop'	40-60cm	2L	Bush: 3 brks: C
Symphoricarpos x chenaultii 'Hancock'	40-60cm	2L	Branched: 3 brks: C
Viburnum davidii	20-30cm	2L	Bushy: 2 brks: C
Vinca minor 'Vanegata'	20-30cm	2L	C

PEDESTRIAN UNDERPASS

Underpass to be upgraded to enhance pedestrian security.

To housing end, the existing planting to be removed and a raised block paved table to be formed. Security of 'blind vias' to be improved for those accessing from the school by railings to either side.

To school side, pedestrian safety to be enhanced by providing railings to prevent access to railway line. Formed circular green with circle of trees defined by surfaced art feature area provides for a school and community meeting place.

Client
Barratt South Wales
Westbury Homes
Project
St. Julians
Newport
Drawing title
St. Julians - Landscape Layout
Scale 1:500
Date May 04
Drawn TP
Checked PRB
Drawing 5369 L03
Revision

Wyn Thomas Gordon Lewis