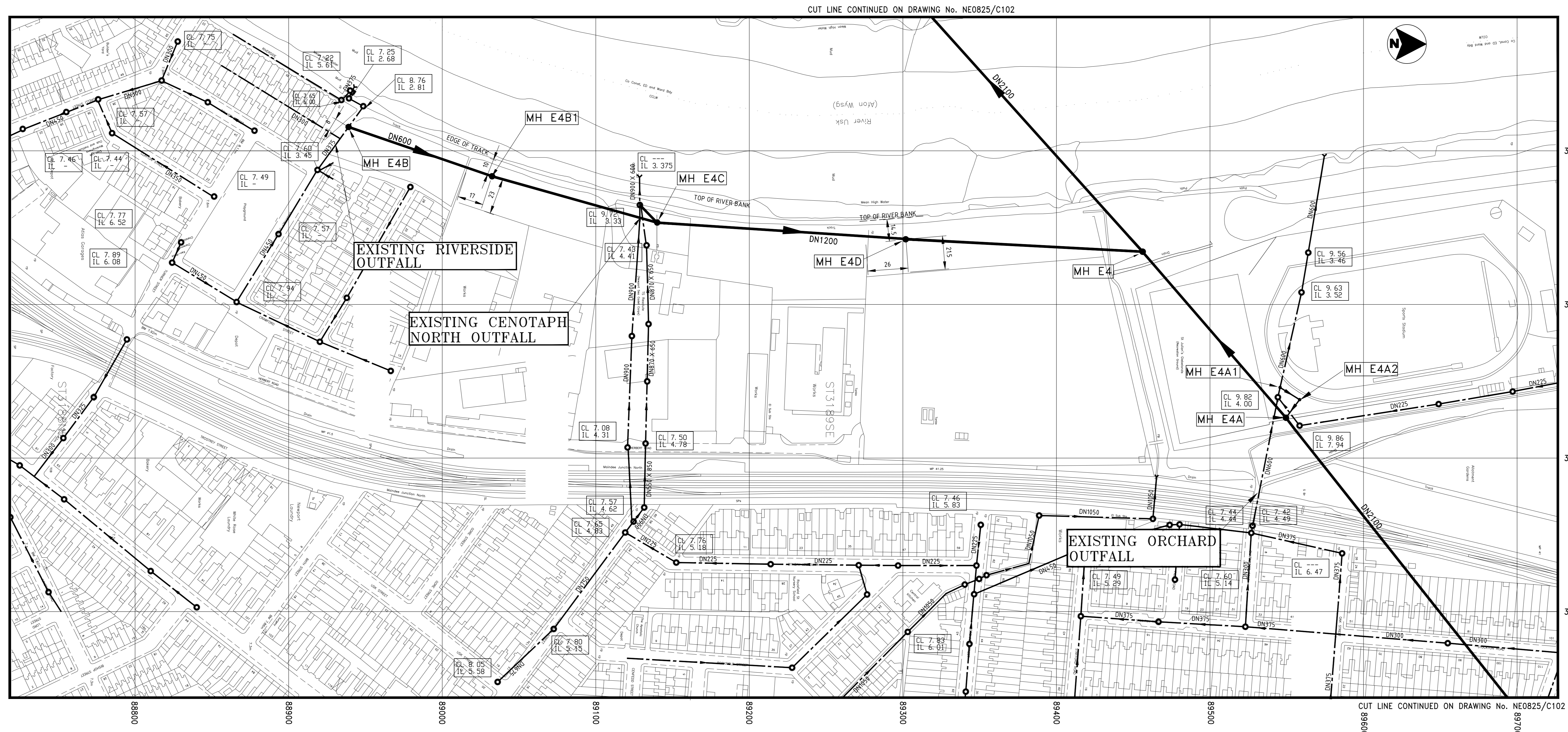


APPENDIX 11.2



KEY

- EXISTING FOUL SEWER
- EXISTING STORMWATER SEWER
- NEW FOUL SEWER
- EXISTING PUMPING MAIN
- NEW PUMPING MAIN
- EXISTING MANHOLE
- NEW MANHOLE
- EXISTING MANHOLE LEVELS

MANHOLE CO-ORDINATES

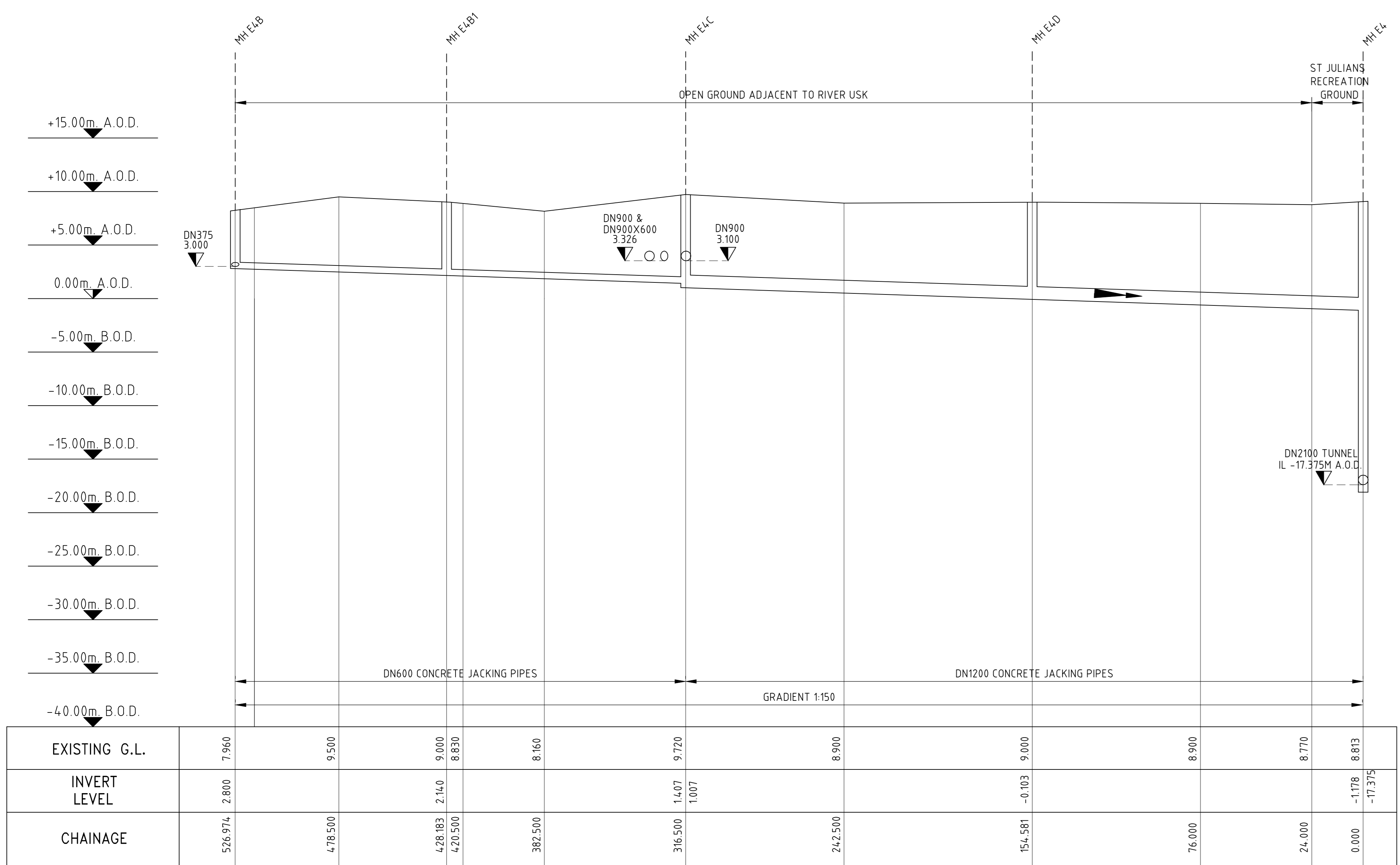
MANHOLE No.	EASTING	NORTHING
MH E4A1	31754	89545
MH E4A2	31762	89558
MH E4B	31584.524	88938.972
MH E4B1	31616.775	89032.347
MH E4C	31644.760	89139.930
MH E4D	31657.600	89301.850

(TO BE CONFIRMED ON SITE)

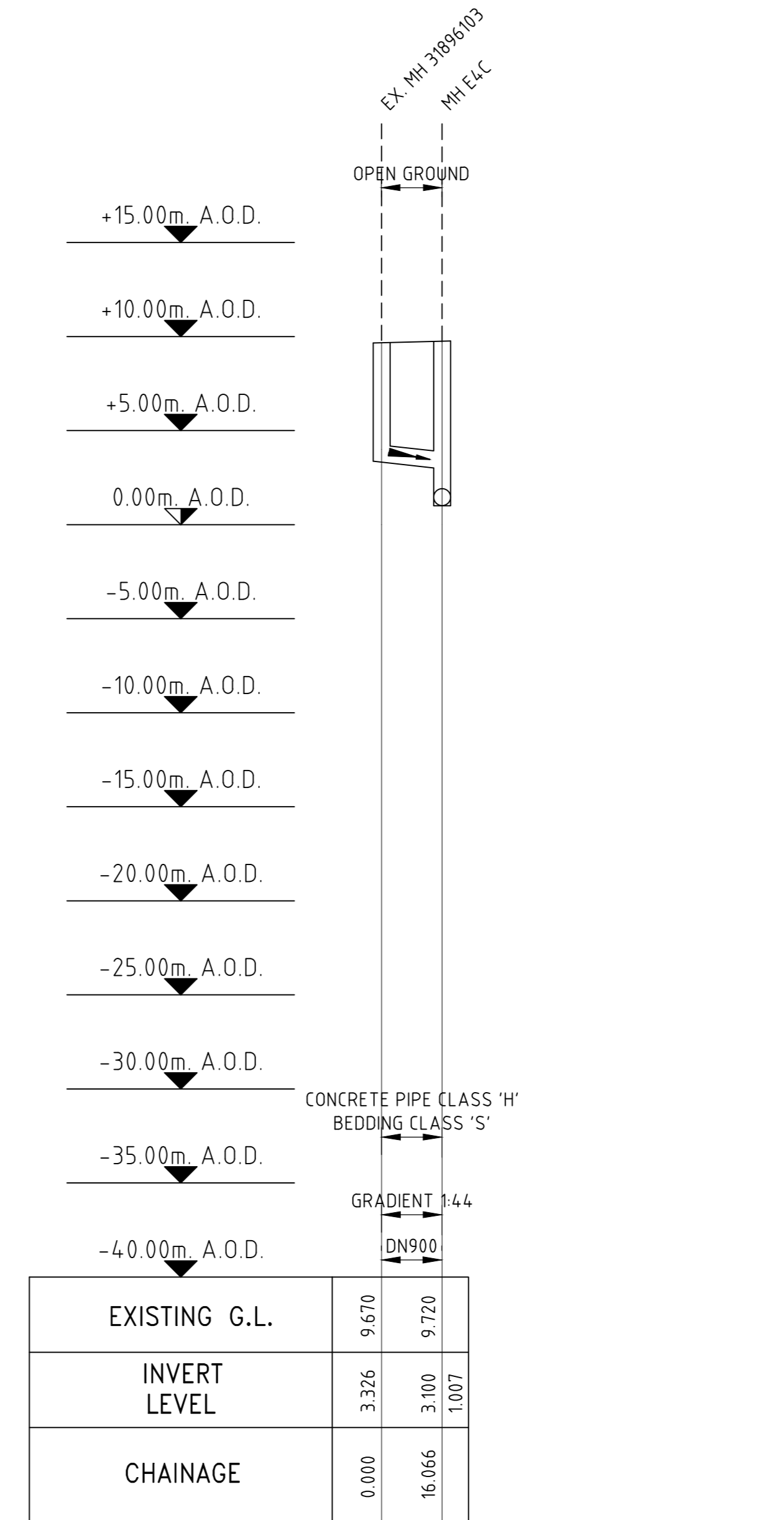
- NOTES**
- INVERT LEVELS OF ALL CONNECTION POINTS ON EXISTING SEWERS TO BE CONFIRMED ON SITE BEFORE COMMENCING THE PRINCIPAL SEWERAGE WORKS
 - FOR GENERAL DETAILS AND NOTES ON STANDARD MANHOLES SEE DRAWING No. NE0825/C538
 - FOR ON LINE TUNNEL SHAFT CO-ORDINATES REFER TO TUNNEL DRAWINGS.

MANHOLE SCHEDULE

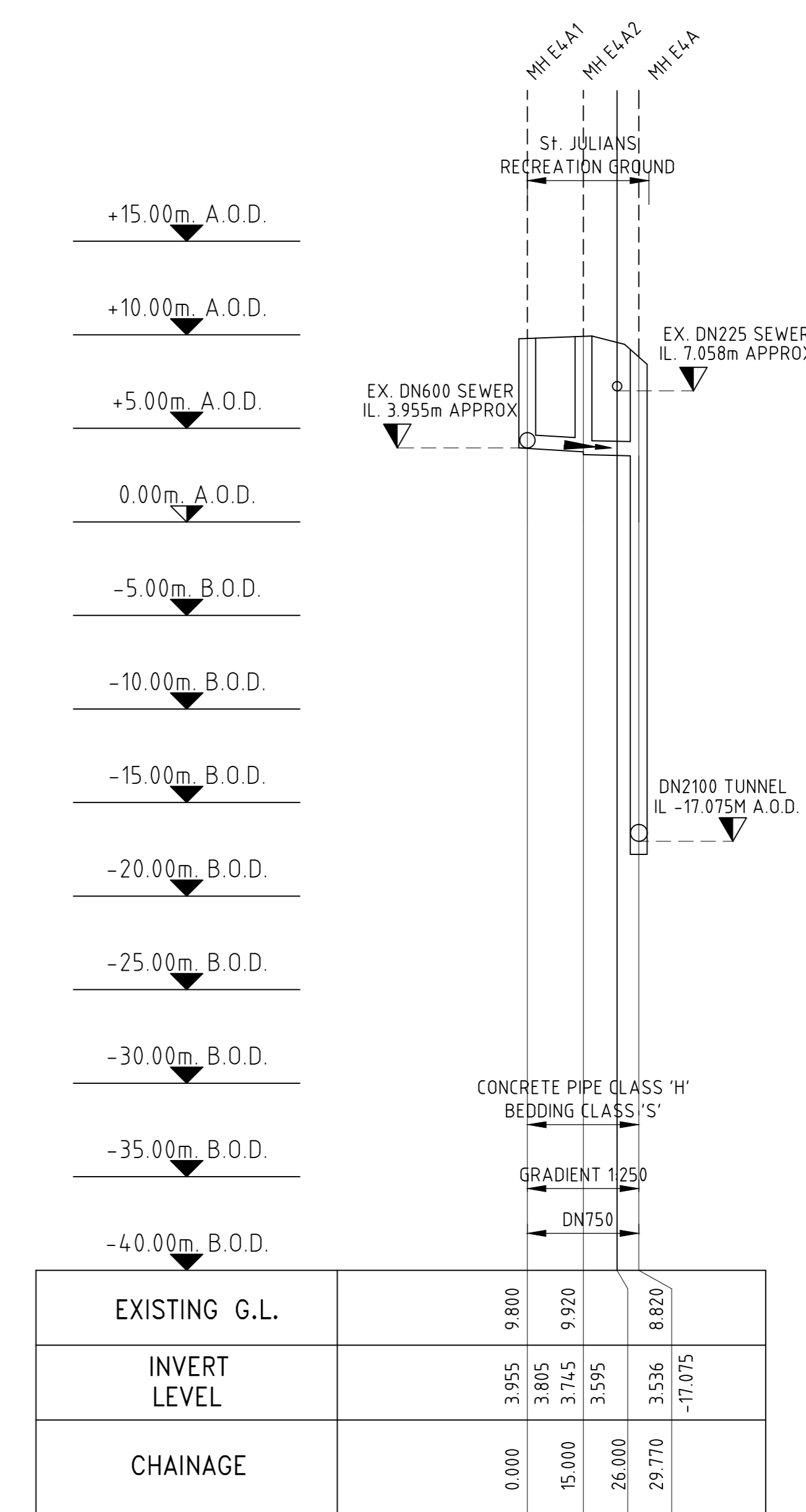
MANHOLE No.	CHAMBER RING DIA. (mm)	MANHOLE TYPE
MH E4A1	DN2700	STANDARD MANHOLE TYPE B
MH E4A2	DN2100	STANDARD MANHOLE TYPE C
MH E4B		STANDARD MANHOLE - REFER TO DRAWING No. NE0825/C080 FOR DETAILS
MH E4B1		STANDARD MANHOLE - REFER TO DRAWING No. NE0825/C081 FOR DETAILS
MH E4C		SPECIAL MANHOLE - REFER TO DRAWING No. NE0825/C081 FOR DETAILS
MH E4D		SPECIAL MANHOLE - REFER TO DRAWING No. NE0825/C082 FOR DETAILS



LONGITUDINAL SECTION OF SEWER FROM MH E4B TO MH E4



LONGITUDINAL SECTION OF SEWER FROM EX. MH TO MH E4C



LONGITUDINAL SECTION OF SEWER FROM MH E4A2 TO MH E4A

1	AS CONSTRUCTED	G.A.J.	S.P.	A.R.C.	09/05/01
Issue	Description	Auth	Chk	Appd	Date
CAD Reference No.	E825C103	Datum	NEWLYN		
Scale	A0 1:1250 HORIZ, 1:250 VERTICAL				
Client	DWR CYMRU WELSH WATER				
Project	NEWPORT SEWERAGE AND WASTE WATER TREATMENT WORKS				
Title	RIVERSIDE, CENOTAPH NORTH AND ORCHARD CONNECTIONS (SHEET 4 OF 8)				
Dwg No.	NE0825/C103	Issue	1		
REPRODUCED FROM THE ORDNANCE SURVEY MAP WITH THE SANCTION OF THE CONTROLLER OF H.M. STATIONERY OFFICE. CROWN COPYRIGHT RESERVED.					

O.S. GRID REF ST3189NE ST3189SE ST3188NE