

Project No. 1839
HERBERT ROAD, NEWPORT



APARTMENT DETAILS : Index 1 of 2

Dwg No.	Drawing Title.	Rev.
A-B1	PART M ENTRANCE	B
A-B2	NON PART M ENTRANCE	B
A-B3	EXTERNAL WALL / SLAB EDGE	B
A-B4	NON LOADBEARING INTERNAL PARTITION / FLOOR	B
A-B5	PARTYWALL / FLOOR	-
A-W1-B	WINDOW CILL WITHIN BRICKWORK	-
A-W1-R	WINDOW CILL WITHIN RENDER	-
A-W2-B	WINDOW HEAD WITHIN BRICKWORK	-
A-W2-R	WINDOW HEAD WITHIN RENDER	-
A-W3	1800MM DEEP WINDOW	-
A-W4	WINDOW BOXING	-
A-W5-B	WINDOW/DOOR CHECK REVEAL BRICKWORK	-
A-W5-R	WINDOW/DOOR CHECK REVEAL RENDER	-
A-W6	SEPARATING WALL PLANS	-
A-C1	INTERNAL DOOR SIZES	A
A-C2	SVP BOXING	-
A-C3	LOW LEVEL BOXING	-
A-C4	SAFETY GLAZING	-
A-F1	SEPARATING FLOOR / EXTERNAL WALL	-
A-F2	SEPARATING FLOOR / SEPARATING WALL	-
A-F3	SERVICE PIPES THROUGH SEPARATING FLOOR	-
A-F4	NON LOAD BEARING WALL / SEPARATING FLOOR JUNCTION	-

B	Notes added to B1-4, B5 added, addition added to C1	06.02.19
A	B1-4 slab updated	28.11.18
REV.	DESCRIPTION	DATE



10 Goldtops
Newport
NP20 4PH

t. 01633 844970
e. info@hammond-ltd.co.uk

Project No. 1839

HERBERT ROAD, NEWPORT



APARTMENT DETAILS : Index 2 of 2

Dwg No.	Drawing Title.	Rev.
A-R1-B	40 DEG BOXED EAVES - BRICKWORK	-
A-R1-R	40 DEG BOXED EAVES - RENDER	-
A-R2-B	35 DEG CLIPPED EAVES / SLOPED CEILING - BRICKWORK	-
A-R2-R	35 DEG CLIPPED EAVES / SLOPED CEILING - RENDER	-
A-R3-B	40 DEG CLIPPED EAVES - BRICKWORK	-
A-R3-R	40 DEG CLIPPED EAVES - RENDER	-
A-R4-B	35 DEG CLIPPED EAVES AT HEAD - BRICKWORK	-
A-R4-R	35 DEG CLIPPED EAVES AT HEAD - RENDER	-
A-R5	VENTILATED RIDGE	-
A-R6-B	40 DEG BOXED EAVES AT HEAD - BRICKWORK	-
A-R6-R	40 DEG BOXED EAVES AT HEAD - RENDER	-
A-R7-B	45 DEG CLIPPED EAVES / SLOPED CEILING - BRICKWORK	-
A-R7-R	45 DEG CLIPPED EAVES / SLOPED CEILING - RENDER	-
A-R8-B	40 DEG CLIPPED EAVES AT HEAD - BRICKWORK	-
A-R8-R	40 DEG CLIPPED EAVES AT HEAD - RENDER	-
A-R9-B	45 DEG CLIPPED EAVES - BRICKWORK	-
A-R9-R	45 DEG CLIPPED EAVES - RENDER	-
A-R10-B	WET VERGE - BRICKWORK	-
A-R10-R	WET VERGE - BLOCKWORK	-
A-R11	SEPARATING WALL AT EAVES	-
A-R12	SEPARATING WALL AT ROOF	-
A-R13	LOFT ACCESS	-
A-R14	PITCHED ROOF VENTILATED LOFT	-

REV. DESCRIPTION DATE



10 Goldtops
Newport
NP20 4PH

t. 01633 844970
e. info@hammond-ltd.co.uk

Project No. 1839

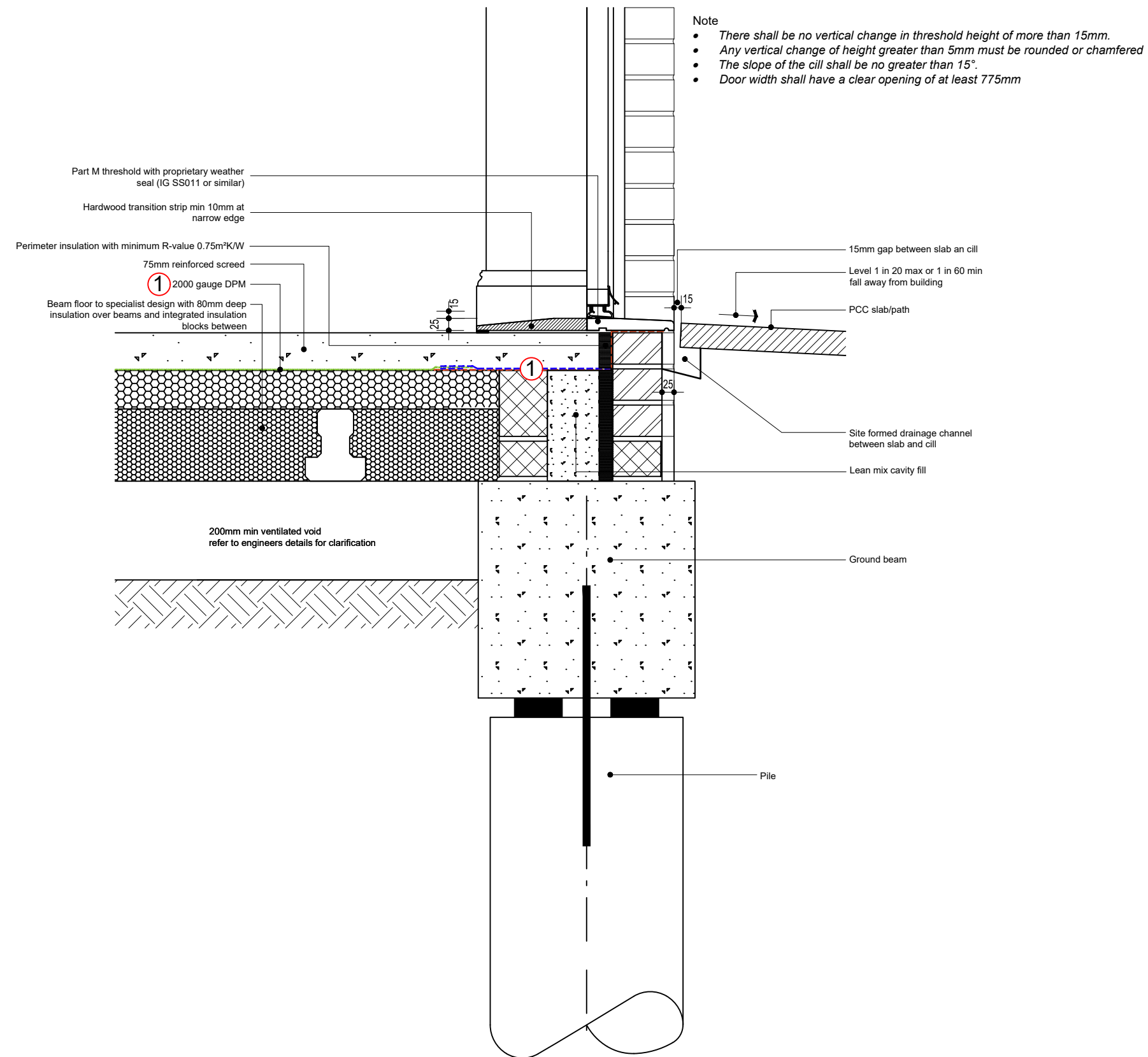
HERBERT ROAD, NEWPORT

APARTMENT DETAILS



UNITS 37 ONWARDS REQUIRE GAS CATEGORY 3 PROTECTION

- 1 VOC Barrier - BS8485:2015 compliant DPM's / DPC's.
- 2 Additional telescopic vents to external cavity walls may be required. *TBC*
- 3 Cavity support to membrane between vents, in the form of rigid insulation. *TBC*



A-B1: PART M ENTRANCE

Issue: November 2018

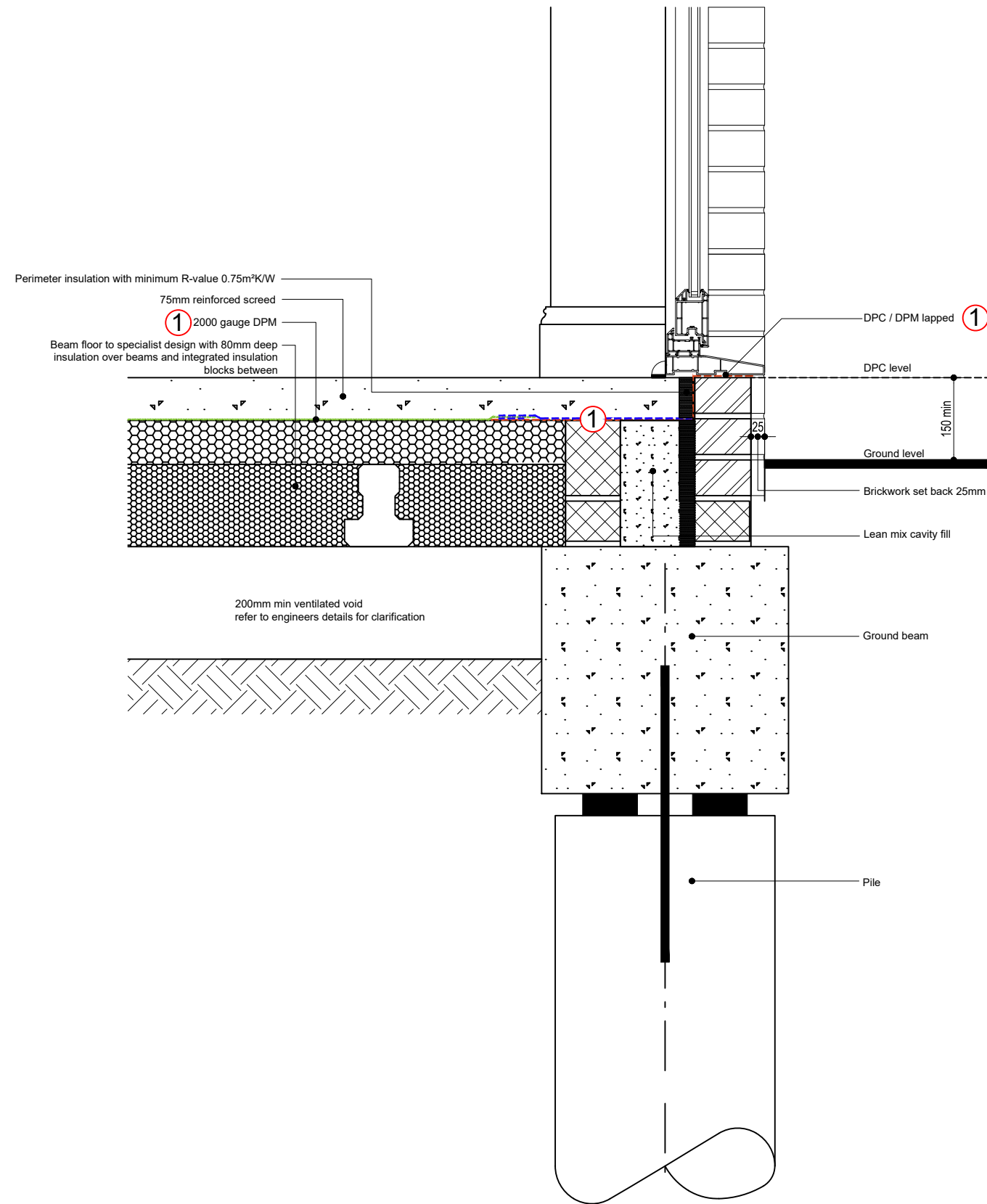
Revision: B

Scale - 1:10

Project No. 1839

HERBERT ROAD, NEWPORT

APARTMENT DETAILS



- UNITS 37 ONWARDS REQUIRE GAS CATEGORY 3 PROTECTION**
- ① VOC Barrier - BS8485:2015 compliant DPM's / DPC's.
 - ② Additional telescopic vents to external cavity walls may be required. *TBC*
 - ③ Cavity support to membrane between vents, in the form of rigid insulation. *TBC*



A-B2: NON PART M ENTRANCE

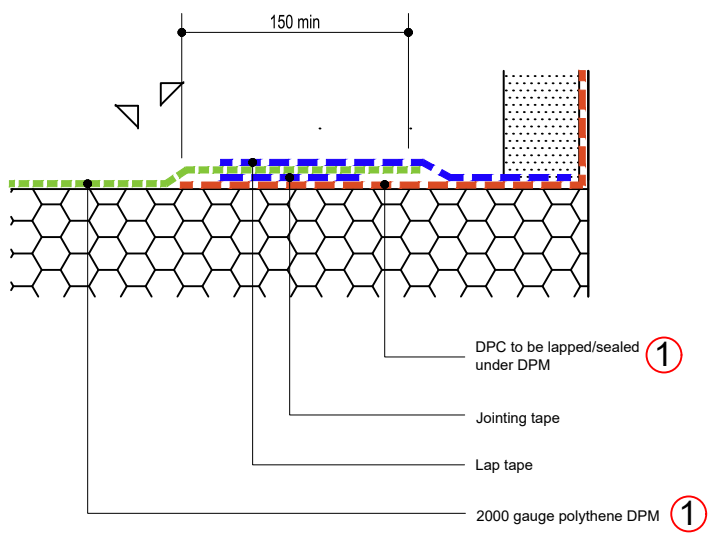
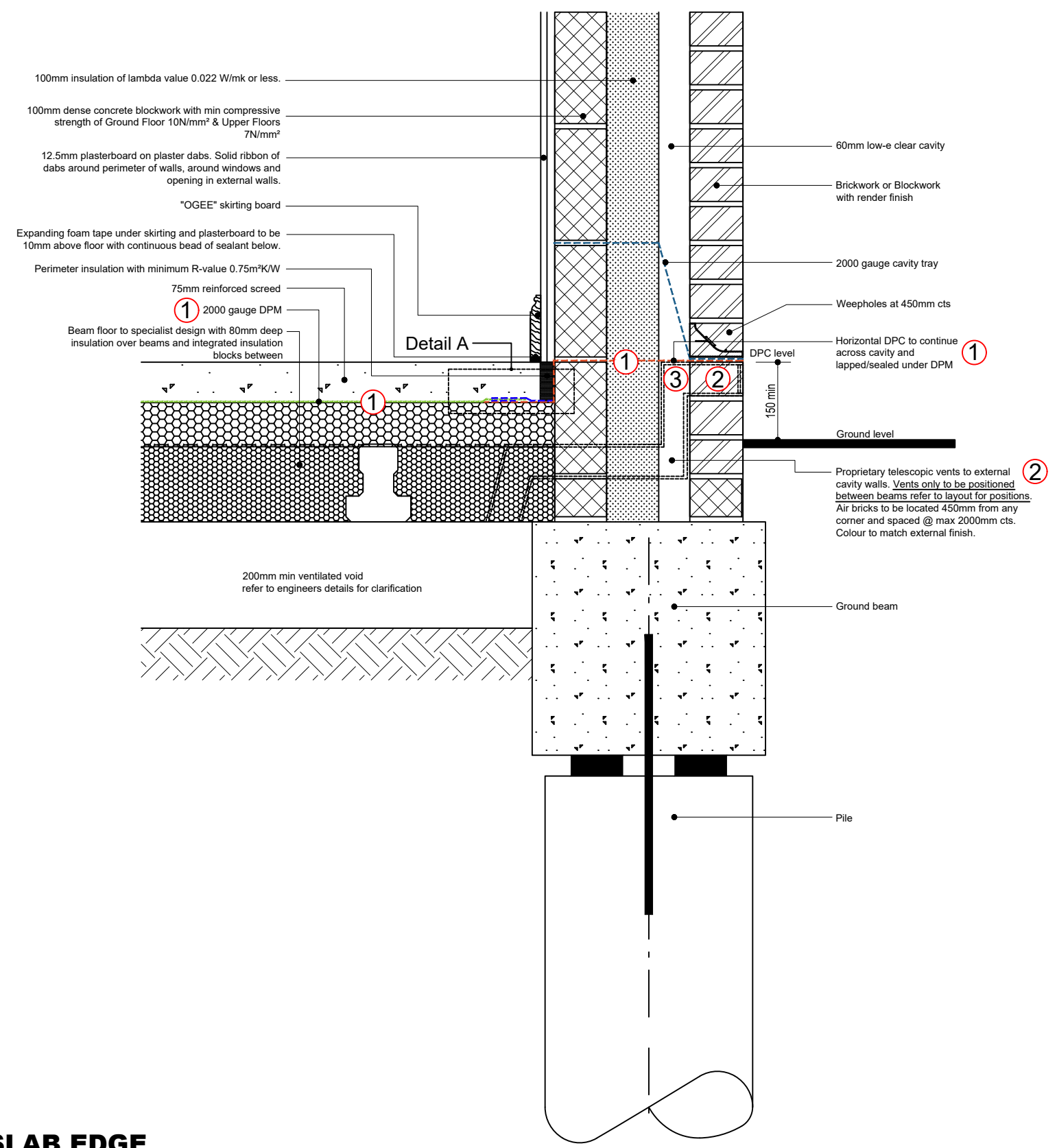
Issue: November 2018
Revision: B
Scale - 1:10

Project No. 1839
 HERBERT ROAD, NEWPORT
APARTMENT DETAILS



- UNITS 37 ONWARDS REQUIRE GAS CATEGORY 3 PROTECTION**
- ① VOC Barrier - BS8485:2015 compliant DPM's / DPC's.
 - ② Additional telescopic vents to external cavity walls may be required. *TBC*
 - ③ Cavity support to membrane between vents, in the form of rigid insulation. *TBC*

① NOTE Barrier required across whole floor area
 Minimum membrane to be 2000 gauge polythene sheet. All joints, cavity and service entries in barrier to be sealed



Detail A
 Indicative lap & seal joint.
 Refer to manufactures details for further information



A-B3: EXTERNAL WALL / SLAB EDGE

Issue: November 2018
Revision: B
Scale - 1:10

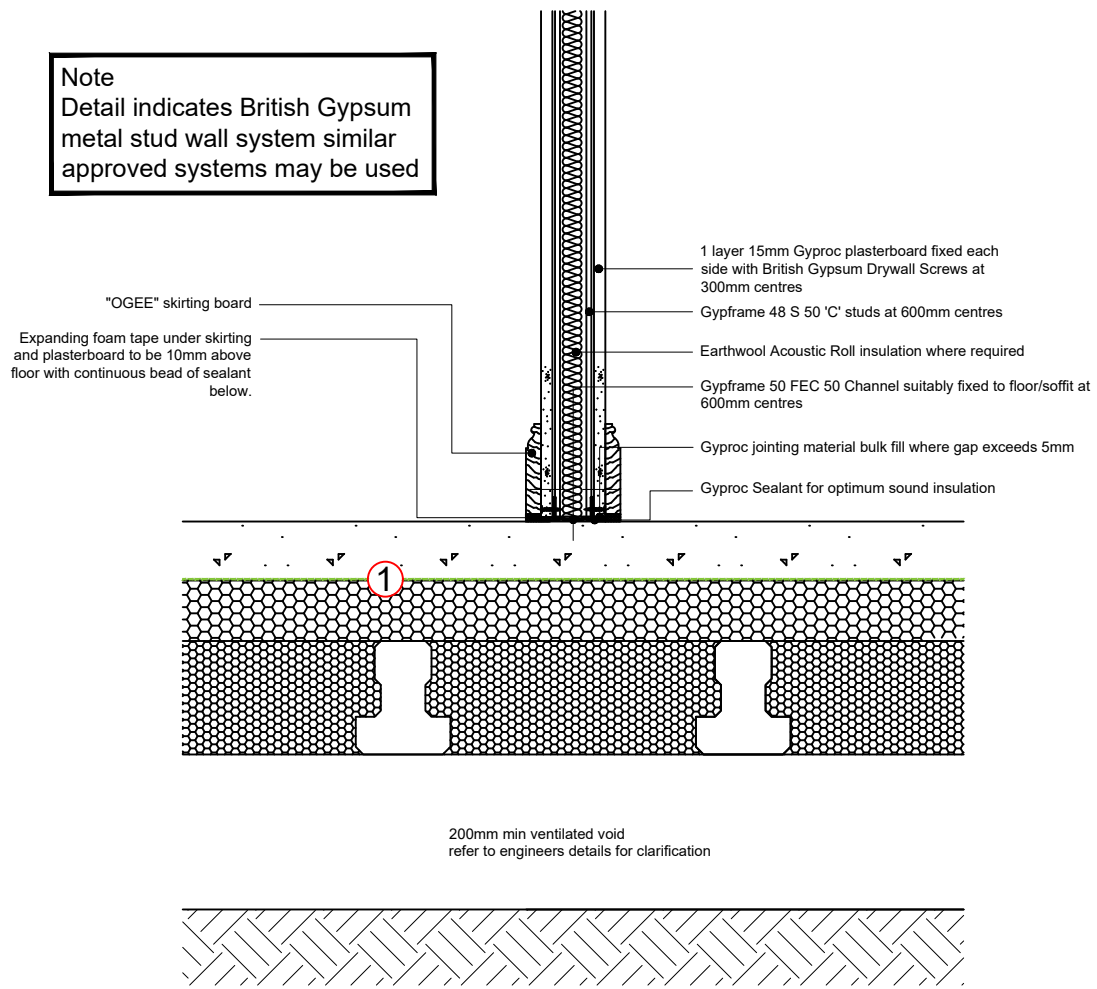
Project No. 1839

HERBERT ROAD, NEWPORT

APARTMENT DETAILS



- UNITS 37 ONWARDS REQUIRE GAS CATEGORY 3 PROTECTION**
- ① VOC Barrier - BS8485:2015 compliant DPM's / DPC's.
 - ② Additional telescopic vents to external cavity walls may be required. *TBC*
 - ③ Cavity support to membrane between vents, in the form of rigid insulation. *TBC*



A-B4: NON LOADBEARING INTERNAL PARTITION / FLOOR

Issue: November 2018
Revision: B
Scale - 1:10

Project No. 1839

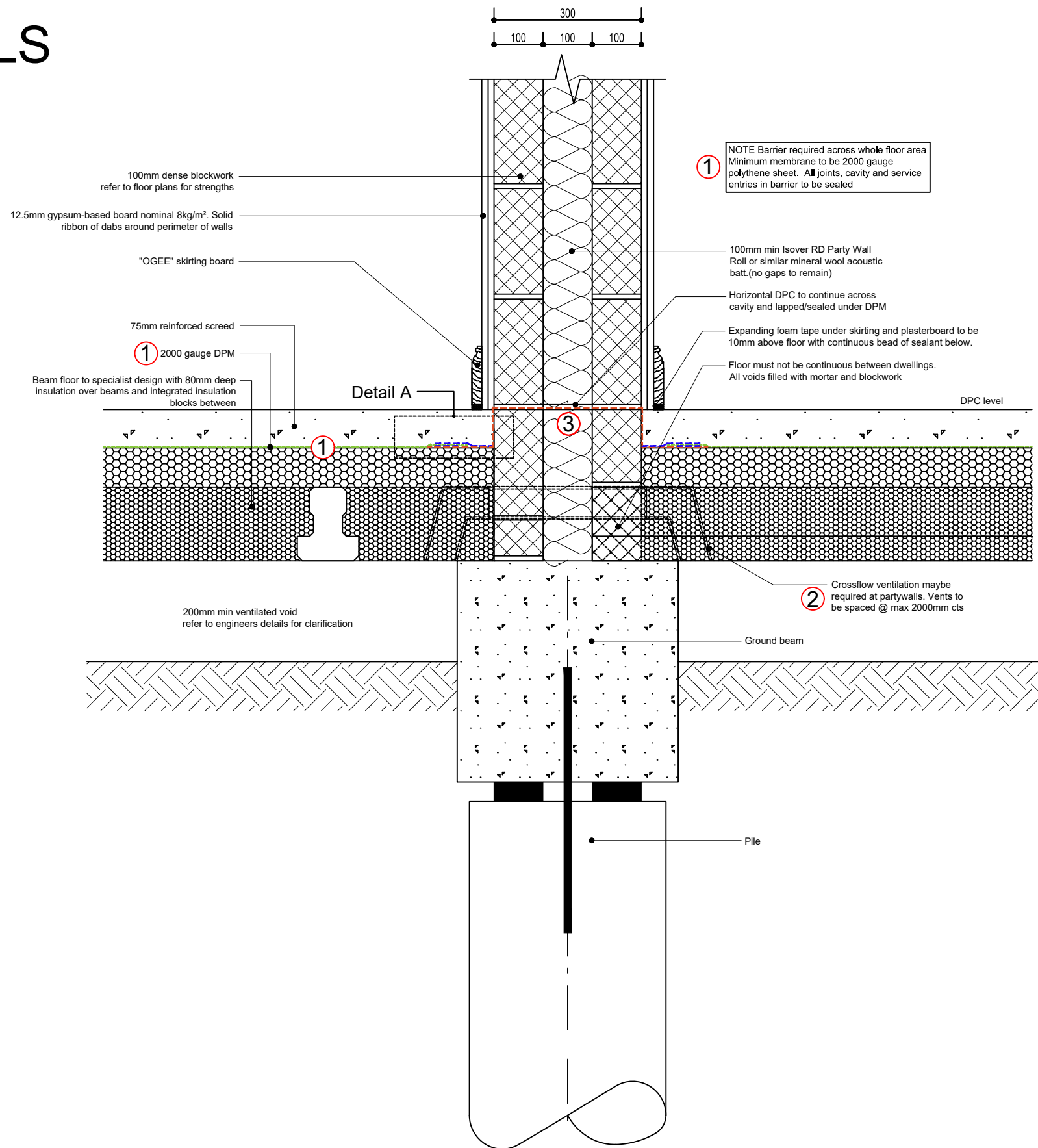
HERBERT ROAD, NEWPORT

APARTMENT DETAILS



UNITS 37 ONWARDS REQUIRE GAS CATEGORY 3 PROTECTION

- ① VOC Barrier - BS8485:2015 compliant DPM's / DPC's.
- ② Additional telescopic vents to external cavity walls may be required. *TBC*
- ③ Cavity support to membrane between vents, in the form of rigid insulation. *TBC*



A-B5: PARTYWALL / FLOOR

Issue: February 2019
Revision: -
Scale - 1:10

Project No. 1839

HERBERT ROAD, NEWPORT

APARTMENT DETAILS



ACCREDITED DETAILS
EXTERNAL WALL OPENINGS
Refer to the Accredited Detail(s):
MCI-WD-01, MCI-WD-04, MCI-WD-05

Sealed double glazed units

UPVC window to be fixed in accordance with manufacturer's recommendations. The built-in tolerance of 5mm-5.5mm is designed to allow for thermal expansion of the PVC-U windows

Window to be sealed with a proprietary neutral cured silicone mastic to cill and jamb

Brickwork

60mm low-e clear cavity

Proprietary closer with minimum thermal resistance path of 0.038m²K/W

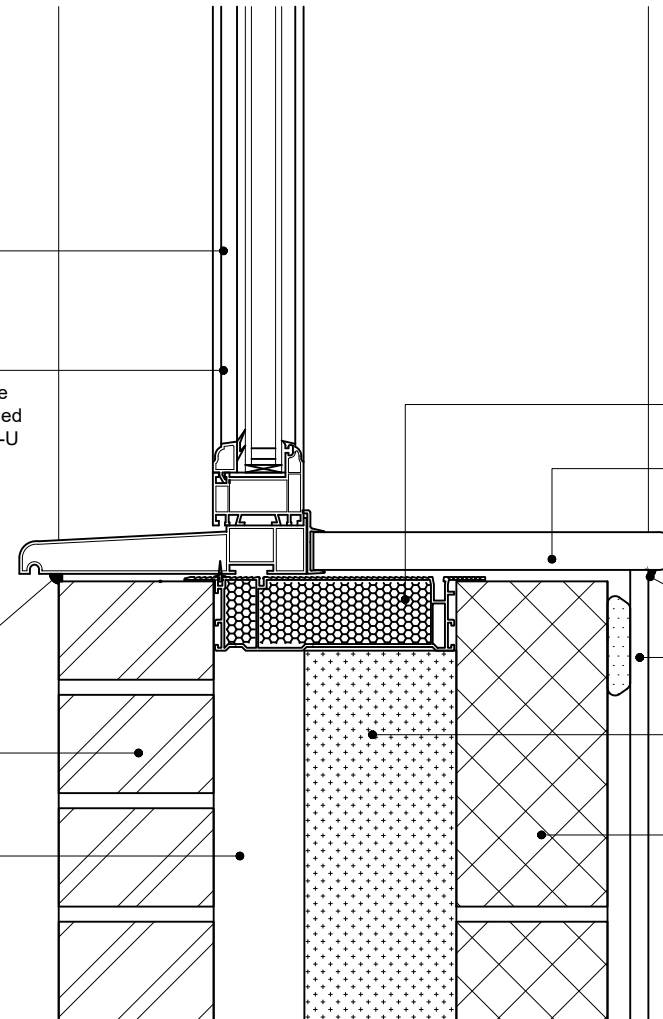
25mm thick timber or MDF window board

Polysulphide sealant

12.5mm plasterboard on plaster dabs.

100mm insulation of lambda value 0.022 W/mk or less.

100mm dense concrete blockwork with min compressive strength of Ground Floor 10N/mm² & Upper Floors 7N/mm²



A-W1-B: WINDOW CILL WITHIN BRICKWORK

Issue: November 2018

Revision: .

Scale - 1:5

Project No. 1839

HERBERT ROAD, NEWPORT

APARTMENT DETAILS



ACCREDITED DETAILS
EXTERNAL WALL OPENINGS
Refer to the Accredited Detail(s):
MCI-WD-01, MCI-WD-04, MCI-WD-05

Sealed double glazed units

UPVC window to be fixed in accordance with manufacturer's recommendations. The built-in tolerance of 5mm-5.5mm is designed to allow for thermal expansion of the PVC-U windows

Window to be sealed with a proprietary neutral cured silicone mastic to cill and jamb

100mm Dense blockwork

Parex Monorex render finish

60mm low-e clear cavity

Proprietary closer with minimum thermal resistance path of 0.038m²K/W

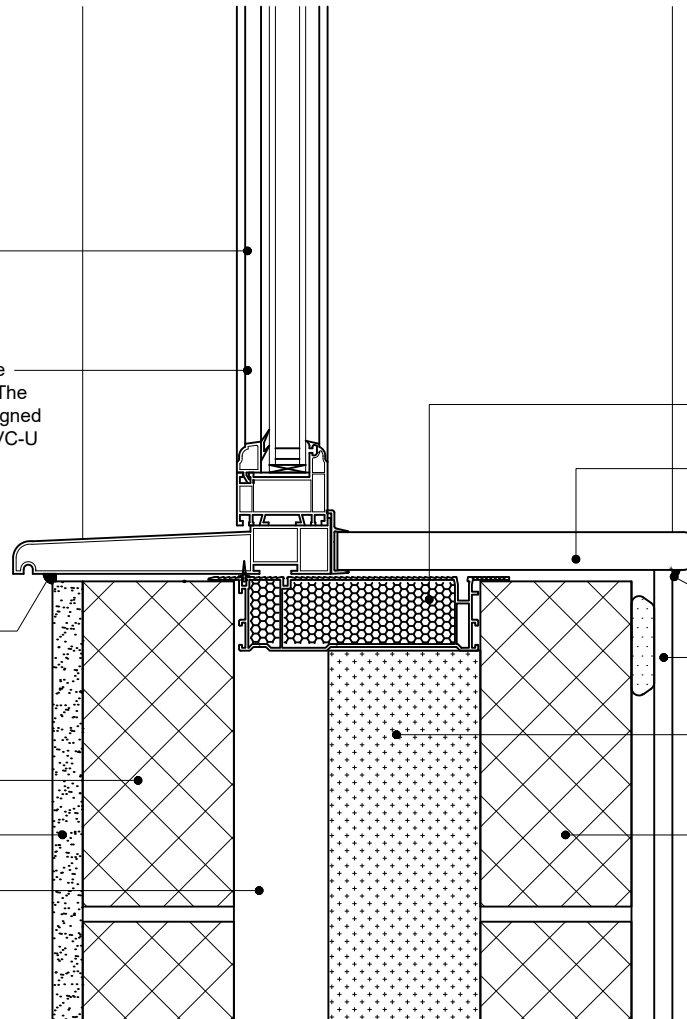
25mm thick timber or MDF window board

Polysulphide sealant

12.5mm plasterboard on plaster dabs.

100mm insulation of lambda value 0.022 W/mk or less.

100mm dense concrete blockwork with min compressive strength of Ground Floor 10N/mm² & Upper Floors 7N/mm²



A-W1-R: WINDOW CILL WITHIN RENDER

Issue: November 2018

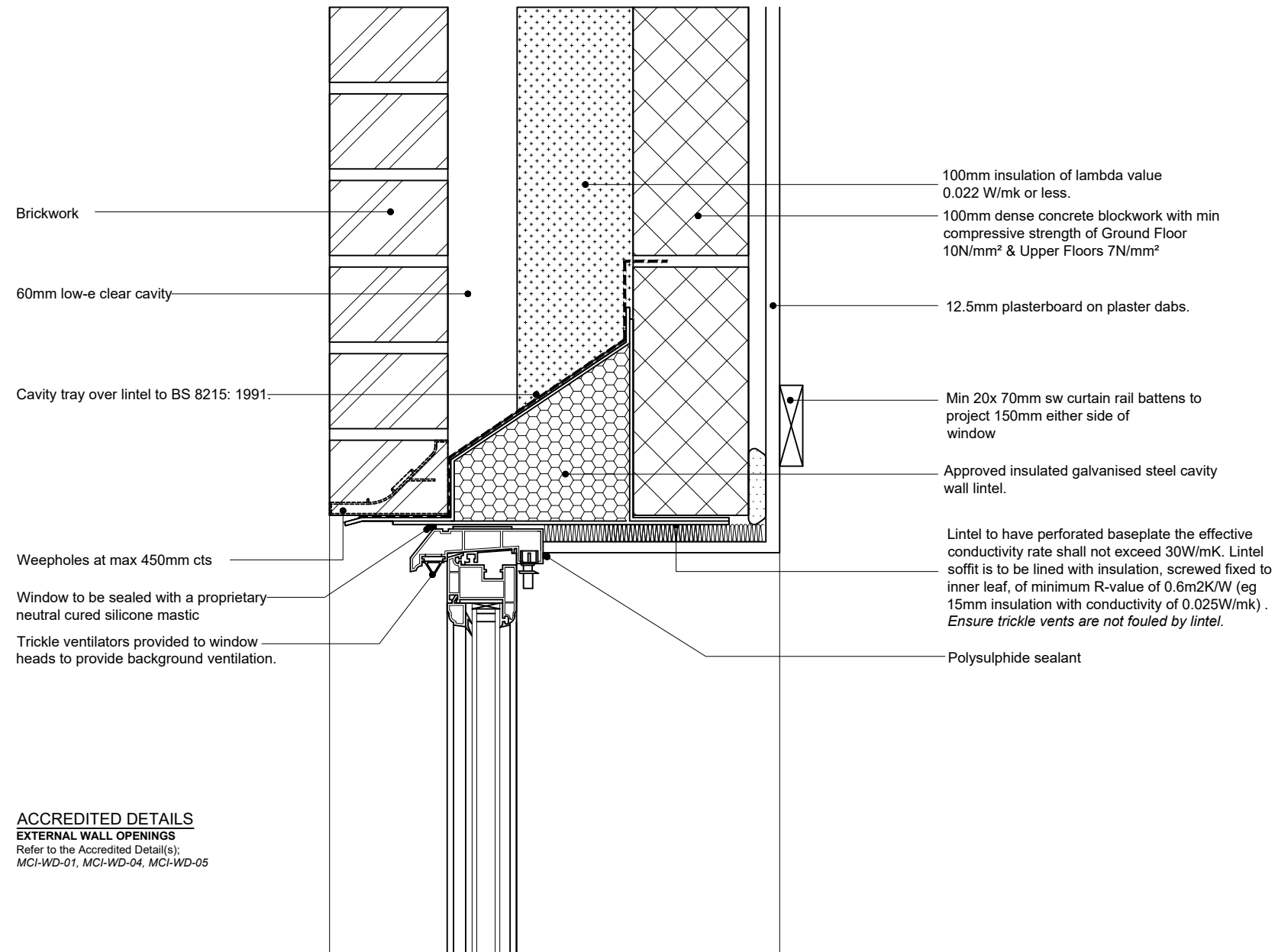
Revision: .

Scale - 1:5

Project No. 1839

HERBERT ROAD, NEWPORT

APARTMENT DETAILS



A-W2-B: WINDOW HEAD WITHIN BRICKWORK

Issue: November 2018

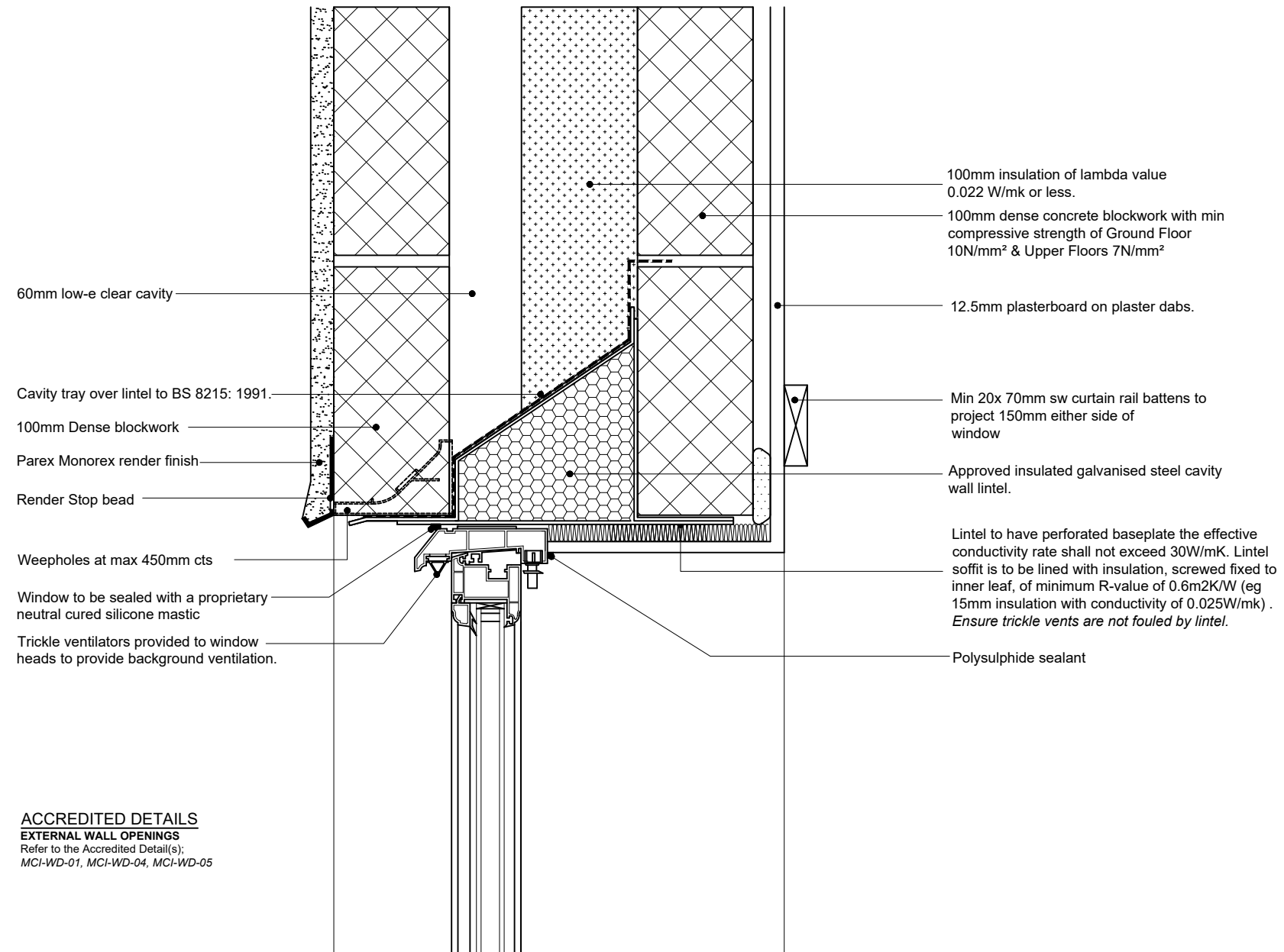
Revision: .

Scale - 1:5

Project No. 1839

HERBERT ROAD, NEWPORT

APARTMENT DETAILS



A-W2-R: WINDOW HEAD WITHIN RENDER

Issue: November 2018

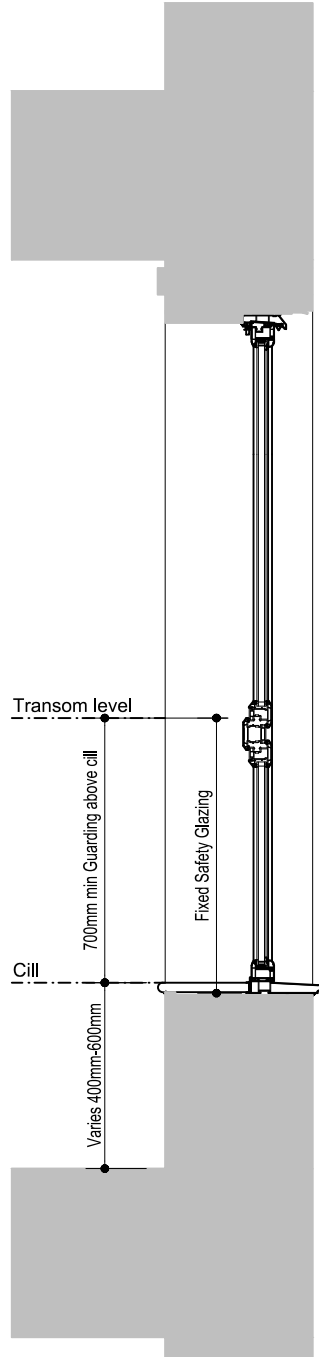
Revision: .

Scale - 1:5

Project No. 1839

HERBERT ROAD, NEWPORT

APARTMENT DETAILS



Glazing acting as guarding should be designed to resist the forces and impact as laid down in BS6399 and BS6180 Therefore, glazing that protects people from falling must meet these requirements

FIXED LOW LEVEL GLAZING
Where the design incorporates low level glazing, less than 800mm above internal floor level such as a window, that is fixed (not openable), glazing and the framing will need to function as guarding where the difference in floor levels exceeds 600mm. The glass should be designed to resist the forces referred to in the British Standards above.



A-W3: 1800MM DEEP WINDOW

Issue: November 2018

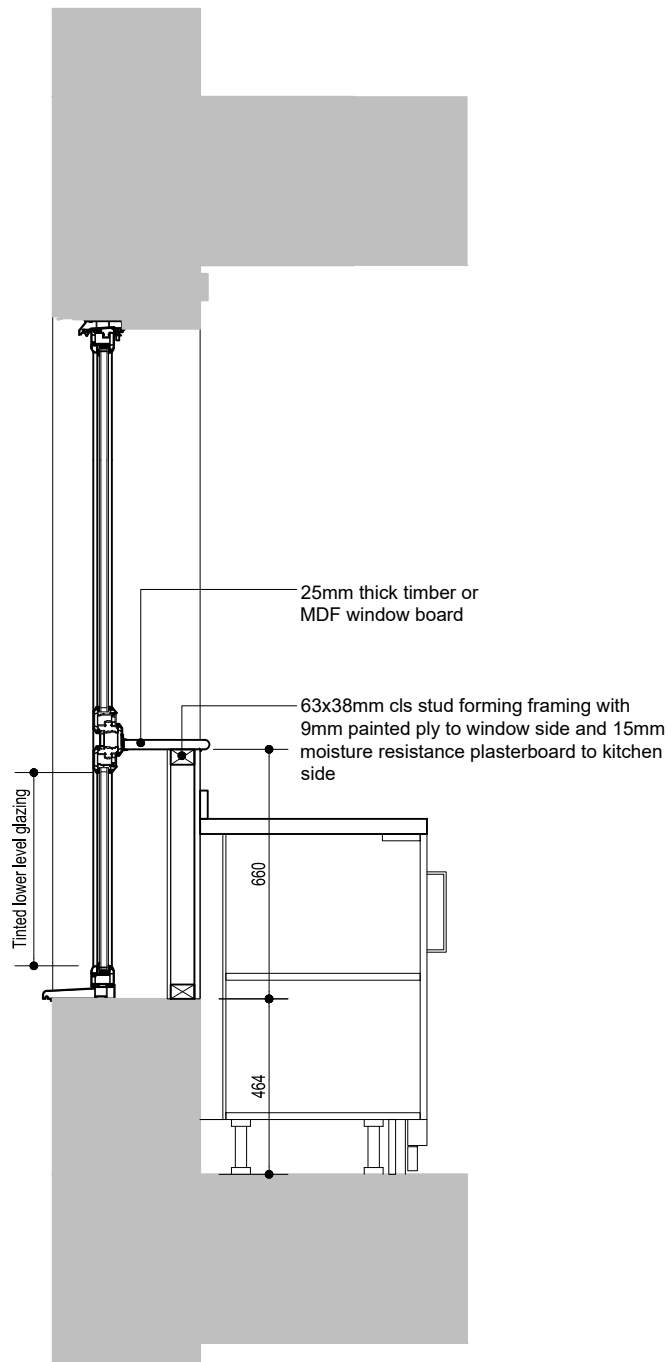
Revision: .

Scale - 1:20

Project No. 1839

HERBERT ROAD, NEWPORT

APARTMENT DETAILS



A-W4: WINDOW BOXING

Issue: November 2018

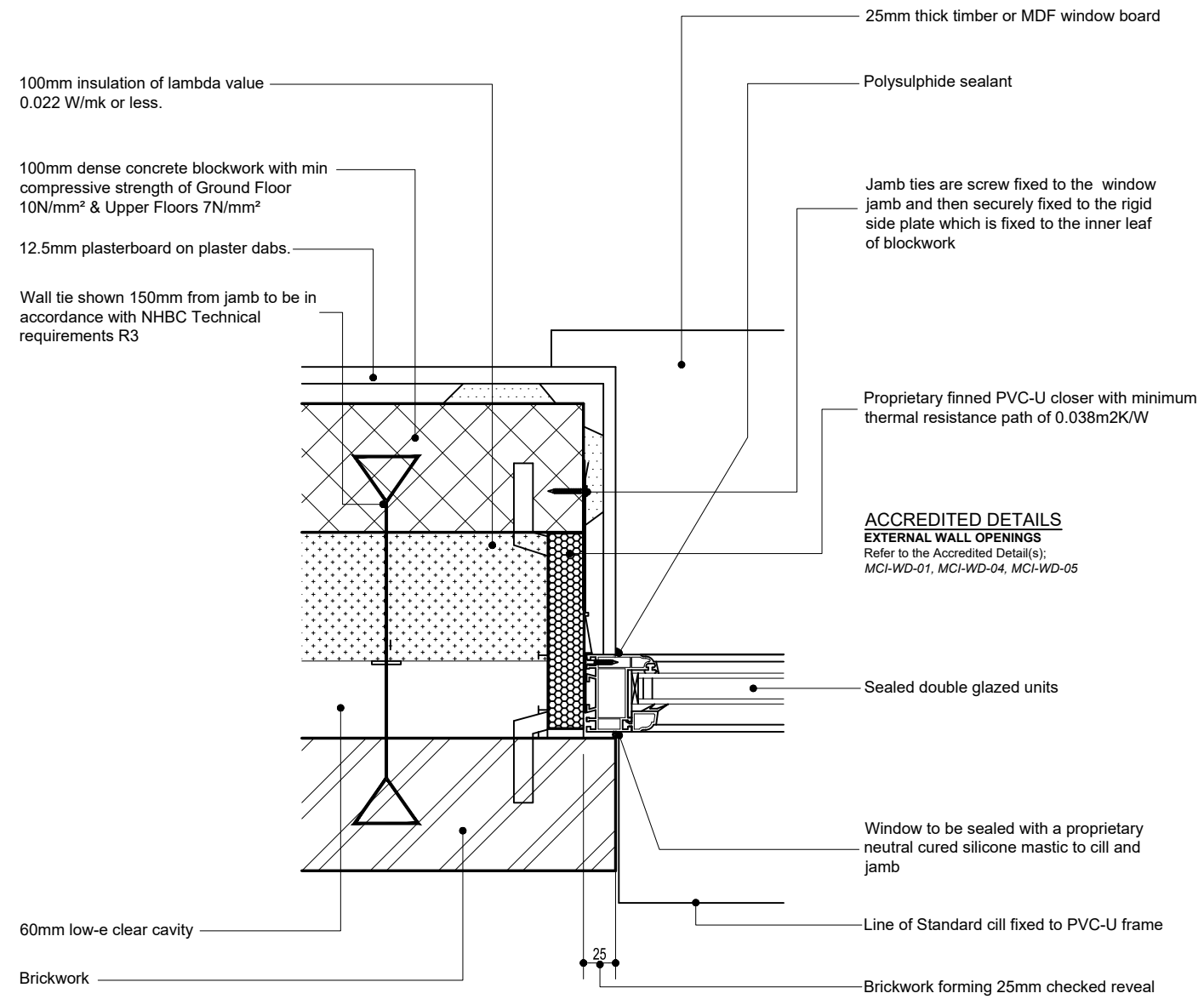
Revision: .

Scale - 1:20

Project No. 1839

HERBERT ROAD, NEWPORT

APARTMENT DETAILS



A-W5-B: WINDOW/DOOR CHECK REVEAL BRICKWORK

Issue: November 2018

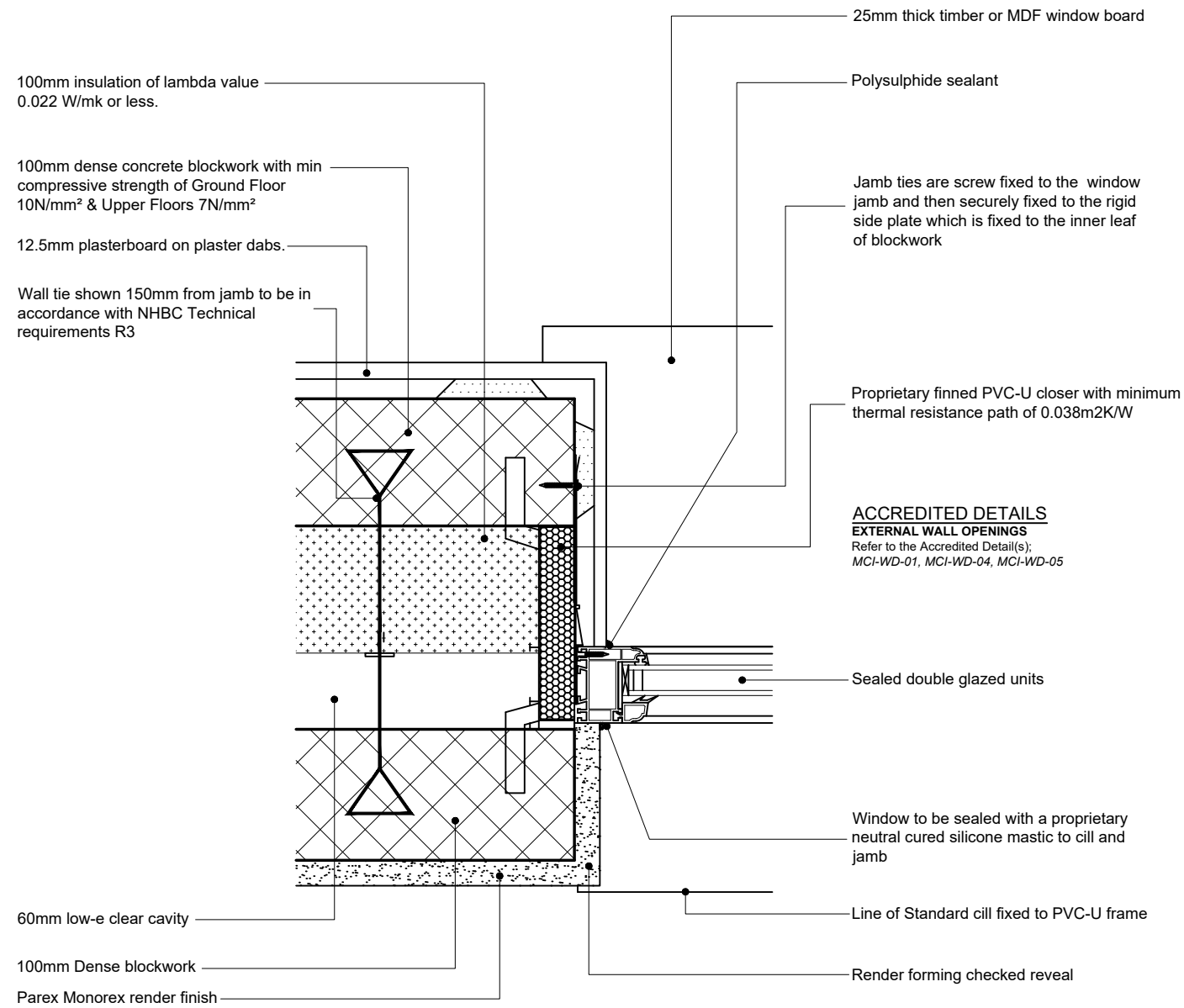
Revision: .

Scale - 1:5

Project No. 1839

HERBERT ROAD, NEWPORT

APARTMENT DETAILS



A-W5-B: WINDOW/DOOR CHECK REVEAL RENDER

Issue: November 2018

Revision: .

Scale - 1:5