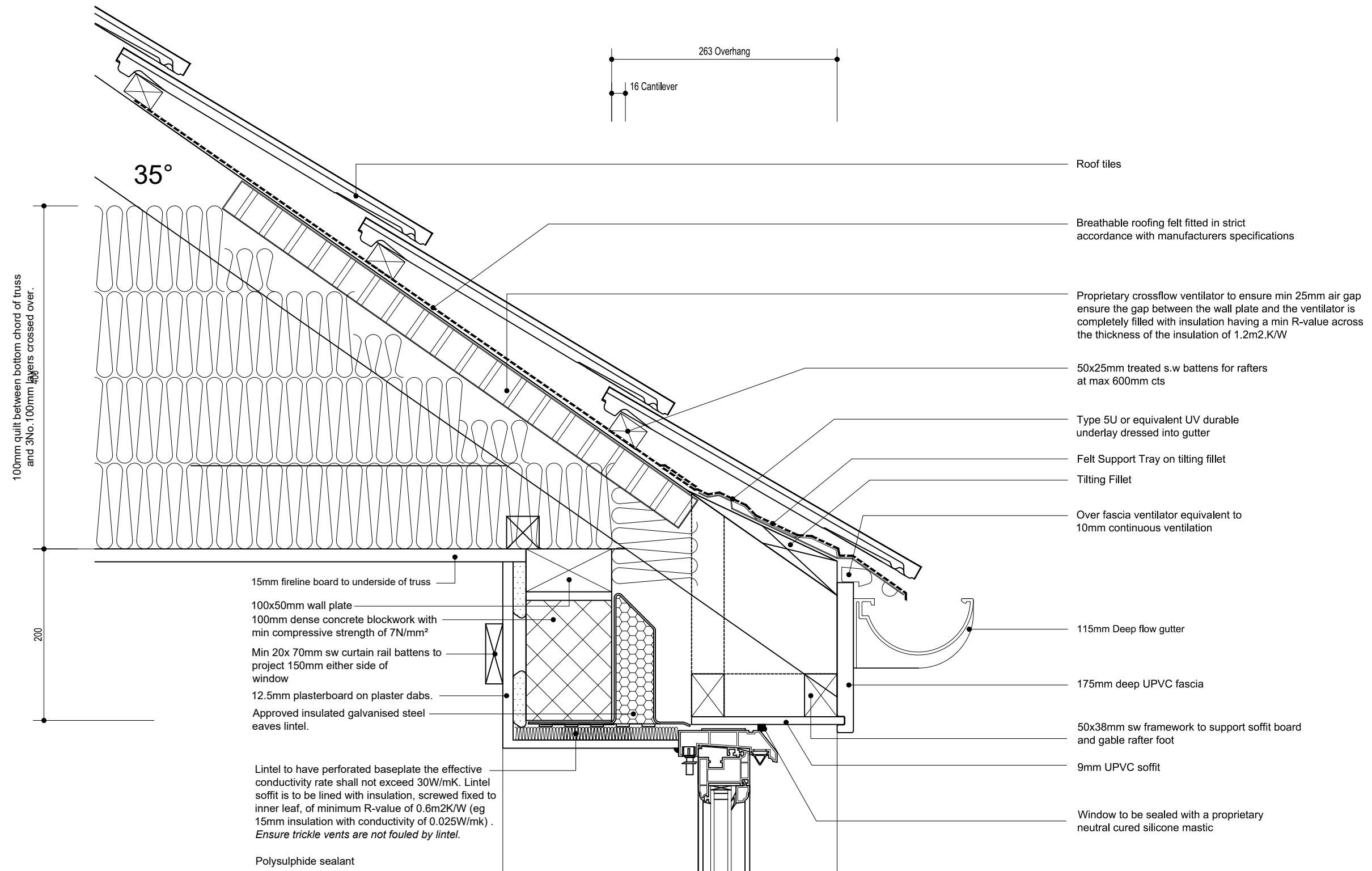


Project No. 1839

HERBERT ROAD, NEWPORT

APARTMENT DETAILS



A-R4-B: 35 DEG CLIPPED EAVES AT HEAD - BRICKWORK

Issue: November 2018

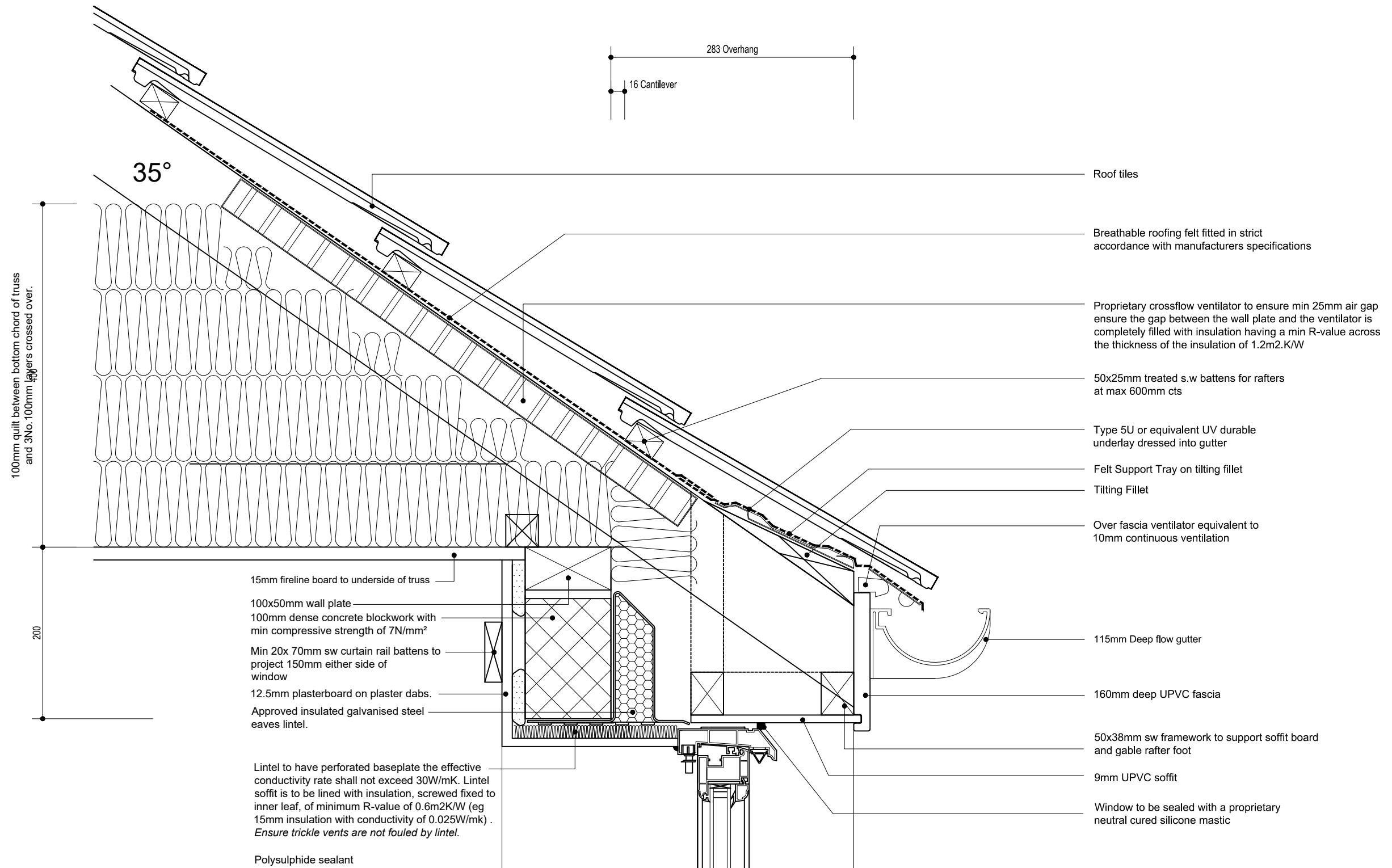
Revision: .

Scale - 1:5

Project No. 1839

HERBERT ROAD, NEWPORT

APARTMENT DETAILS



A-R4-R: 35 DEG CLIPPED EAVES AT HEAD - RENDER

Issue: November 2018

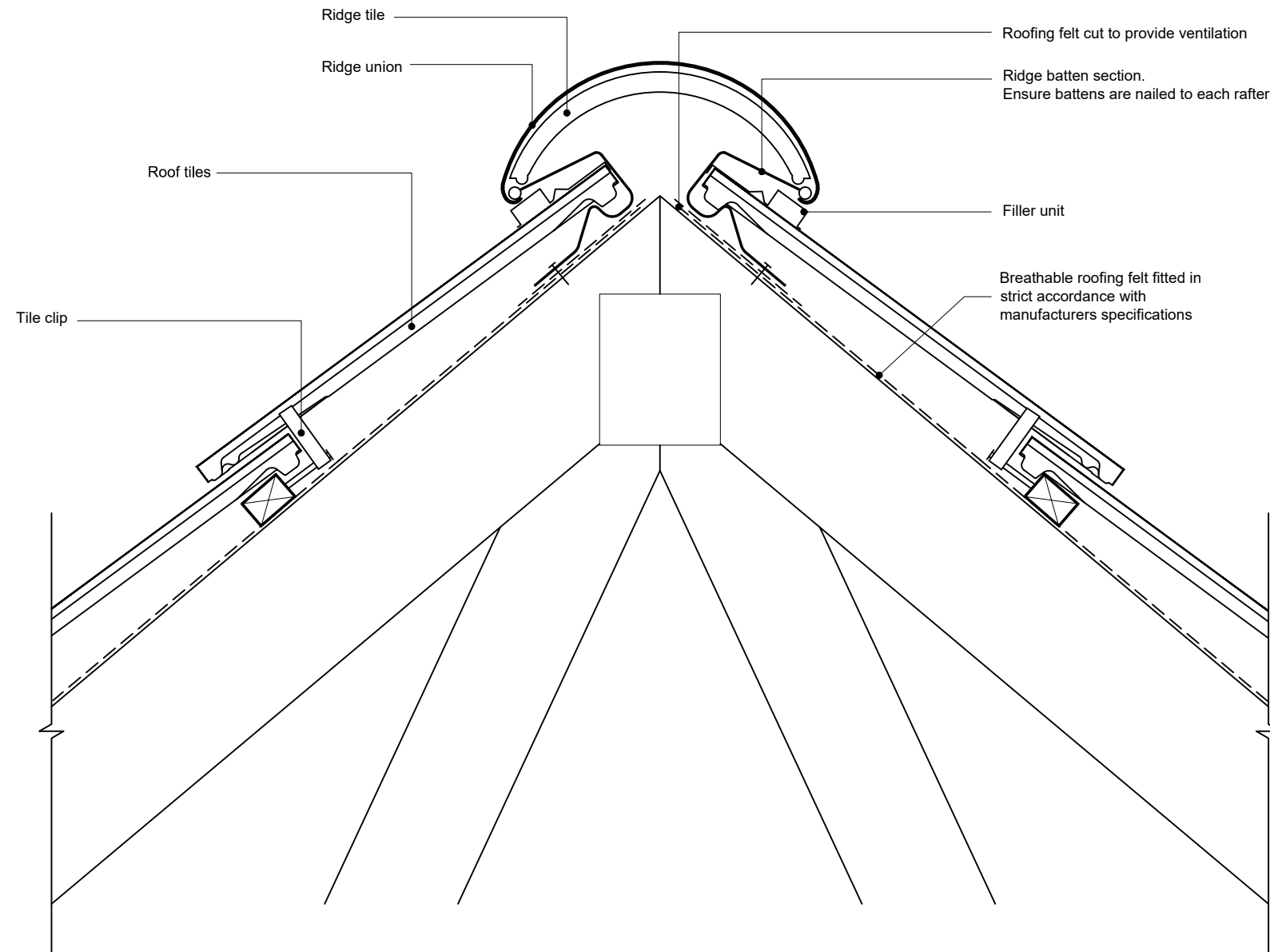
Revision: .

Scale - 1:5

Project No. 1839

HERBERT ROAD, NEWPORT

APARTMENT DETAILS



A-R5: VENTILATED RIDGE

Issue: November 2018

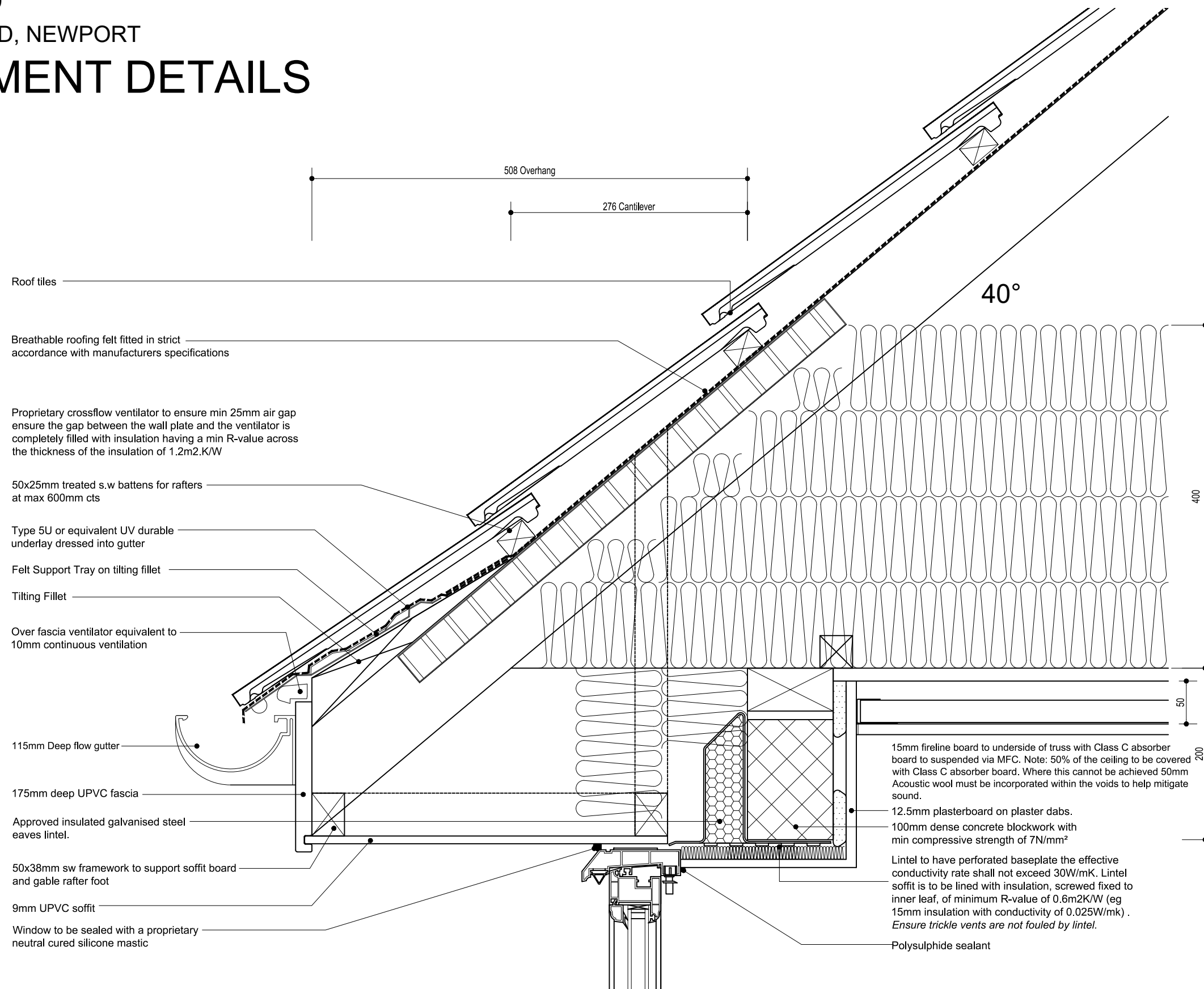
Revision: .

Scale - 1:5

Project No. 1839

HERBERT ROAD, NEWPORT

APARTMENT DETAILS

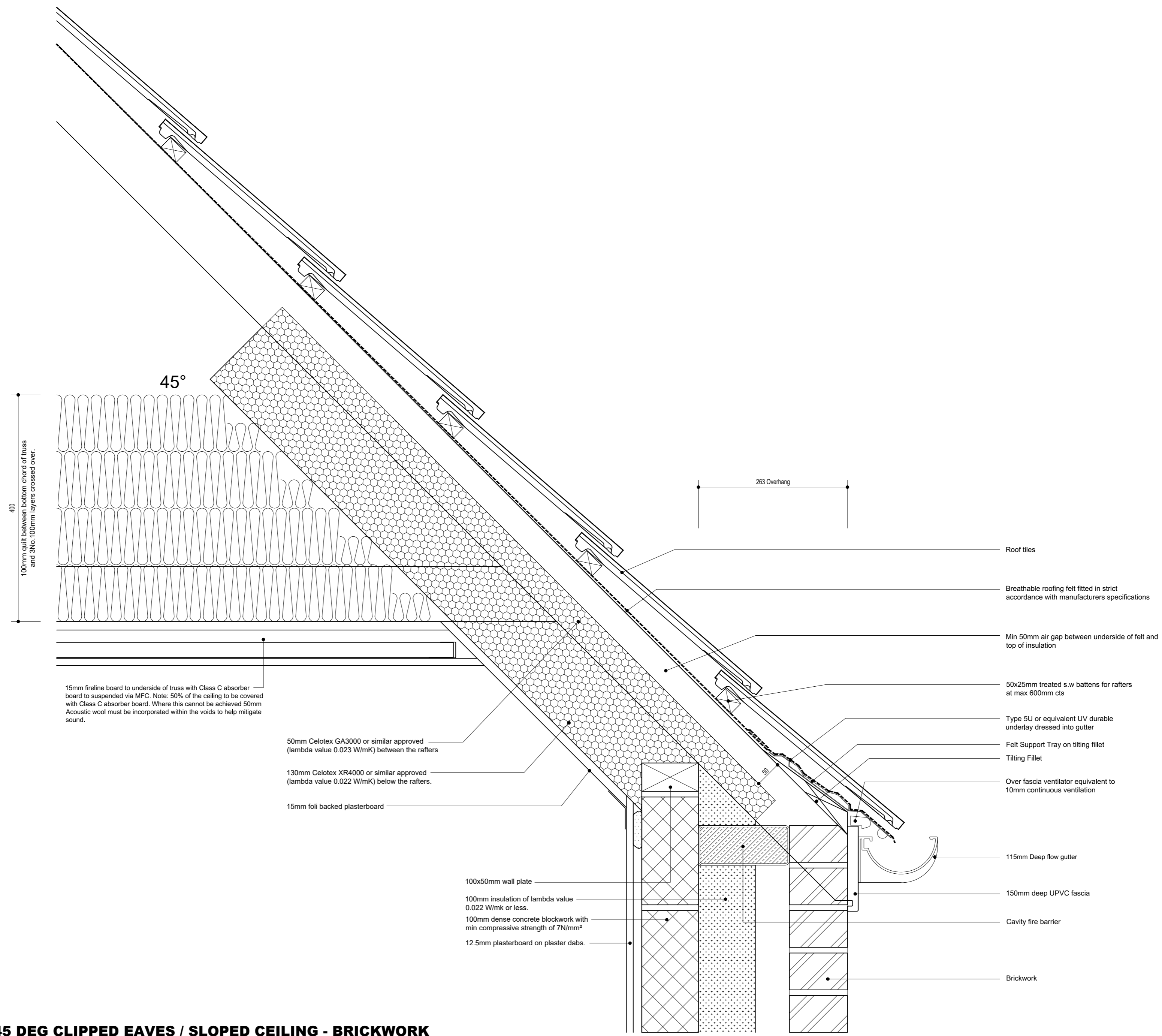


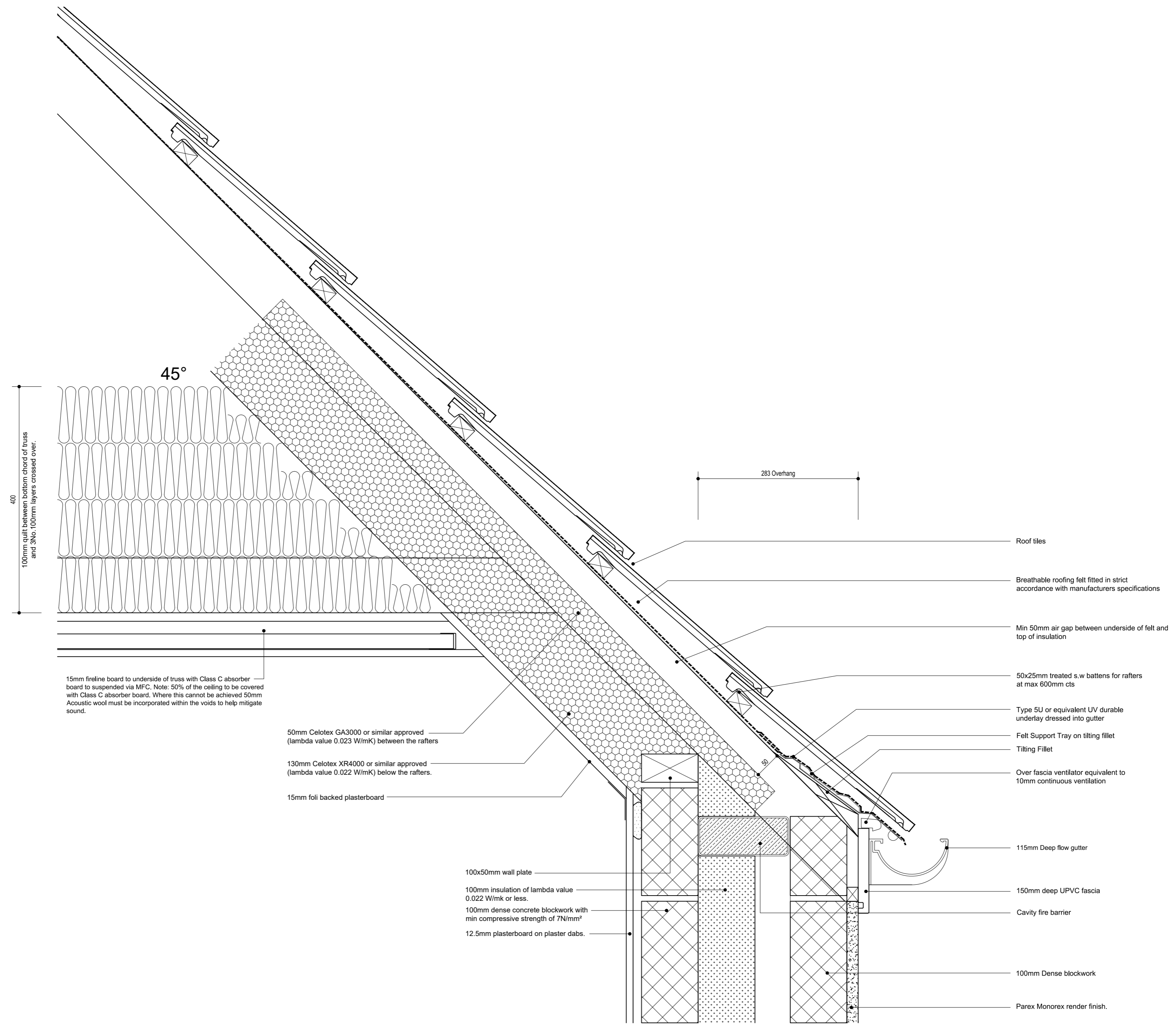
A-R6-R: 40 DEG BOXED EAVES AT HEAD - RENDER

Issue: November 2018

Revision: .

Scale - 1:5





400
 100mm quilt between bottom chord of truss and 3No. 100mm layers crossed over.

45°

283 Overhang

15mm fireline board to underside of truss with Class C absorber board to suspended via MFC. Note: 50% of the ceiling to be covered with Class C absorber board. Where this cannot be achieved 50mm Acoustic wool must be incorporated within the voids to help mitigate sound.

50mm Celotex GA3000 or similar approved (lambda value 0.023 W/mK) between the rafters

130mm Celotex XR4000 or similar approved (lambda value 0.022 W/mK) below the rafters.

15mm foil backed plasterboard

100x50mm wall plate

100mm insulation of lambda value 0.022 W/mK or less.

100mm dense concrete blockwork with min compressive strength of 7N/mm²

12.5mm plasterboard on plaster dabs.

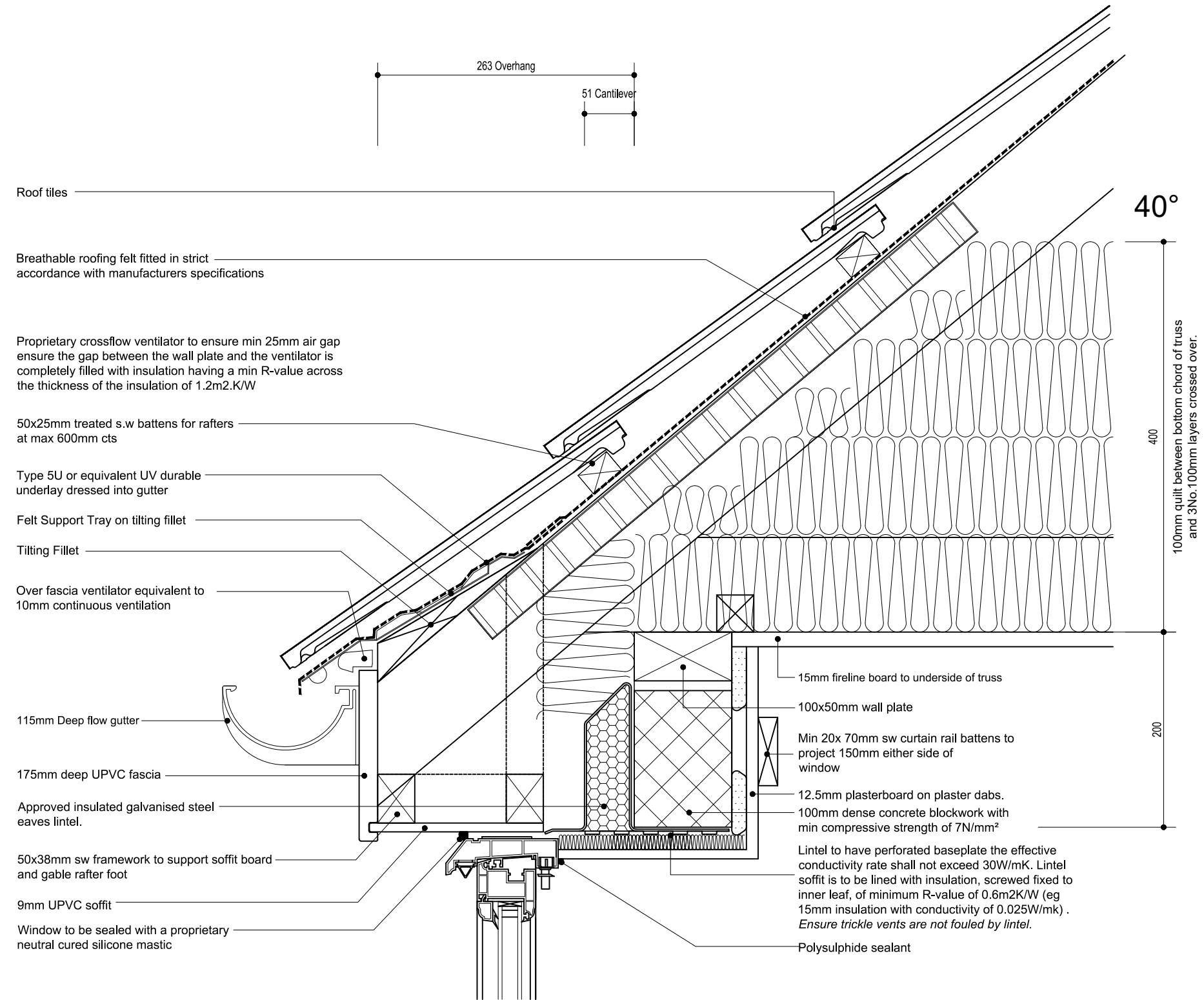
- Roof tiles
- Breathable roofing felt fitted in strict accordance with manufacturers specifications
- Min 50mm air gap between underside of felt and top of insulation
- 50x25mm treated s.w battens for rafters at max 600mm cts
- Type 5U or equivalent UV durable underlay dressed into gutter
- Felt Support Tray on tilting fillet
- Tilting Fillet
- Over fascia ventilator equivalent to 10mm continuous ventilation
- 115mm Deep flow gutter
- 150mm deep UPVC fascia
- Cavity fire barrier
- 100mm Dense blockwork
- Parex Monorex render finish.



Project No. 1839

HERBERT ROAD, NEWPORT

APARTMENT DETAILS



A-R8-B: 40 DEG CLIPPED EAVES AT HEAD - BRICKWORK

Issue: November 2018

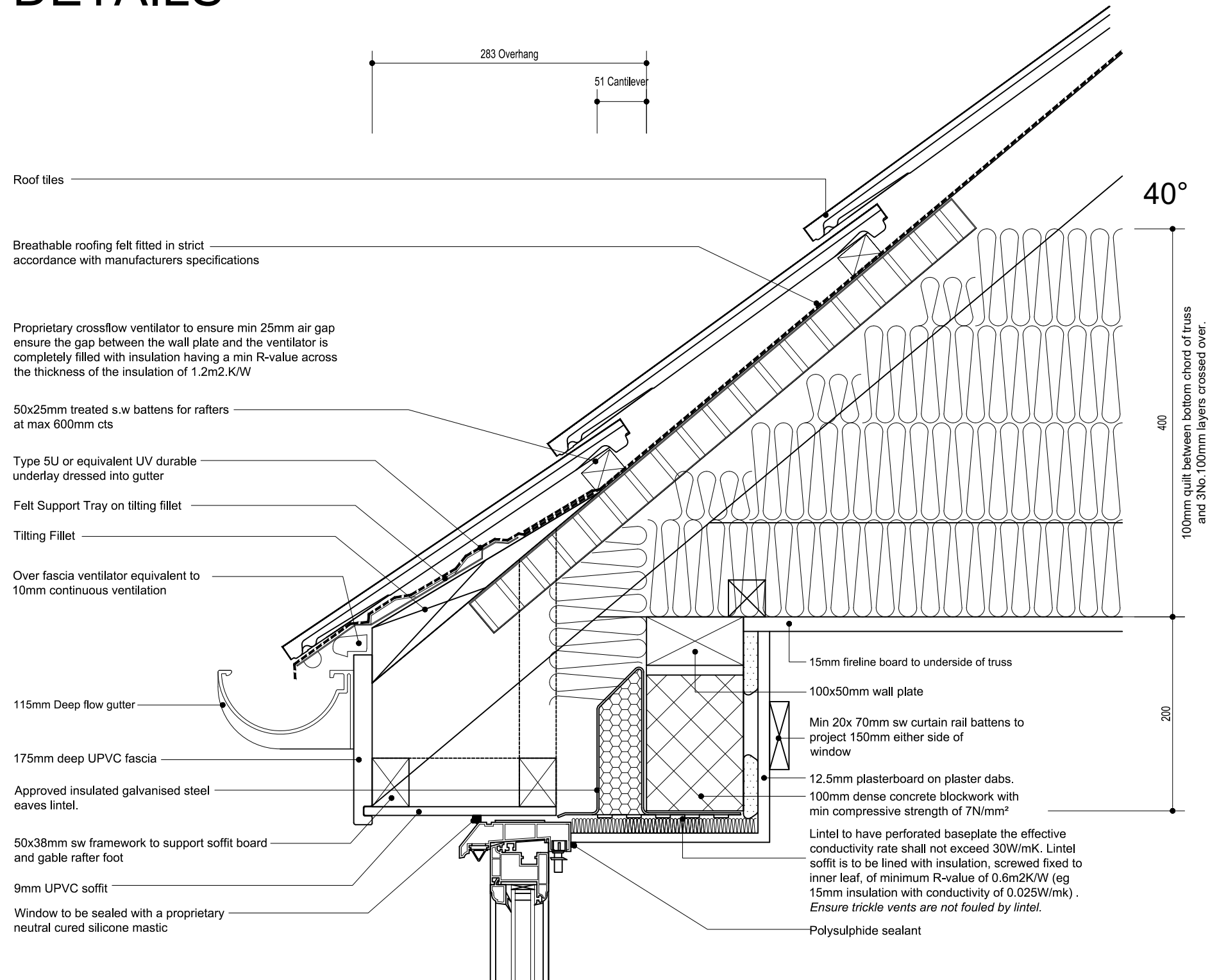
Revision: .

Scale - 1:5

Project No. 1839

HERBERT ROAD, NEWPORT

APARTMENT DETAILS



A-R8-R: 40 DEG CLIPPED EAVES AT HEAD - RENDER

Issue: November 2018

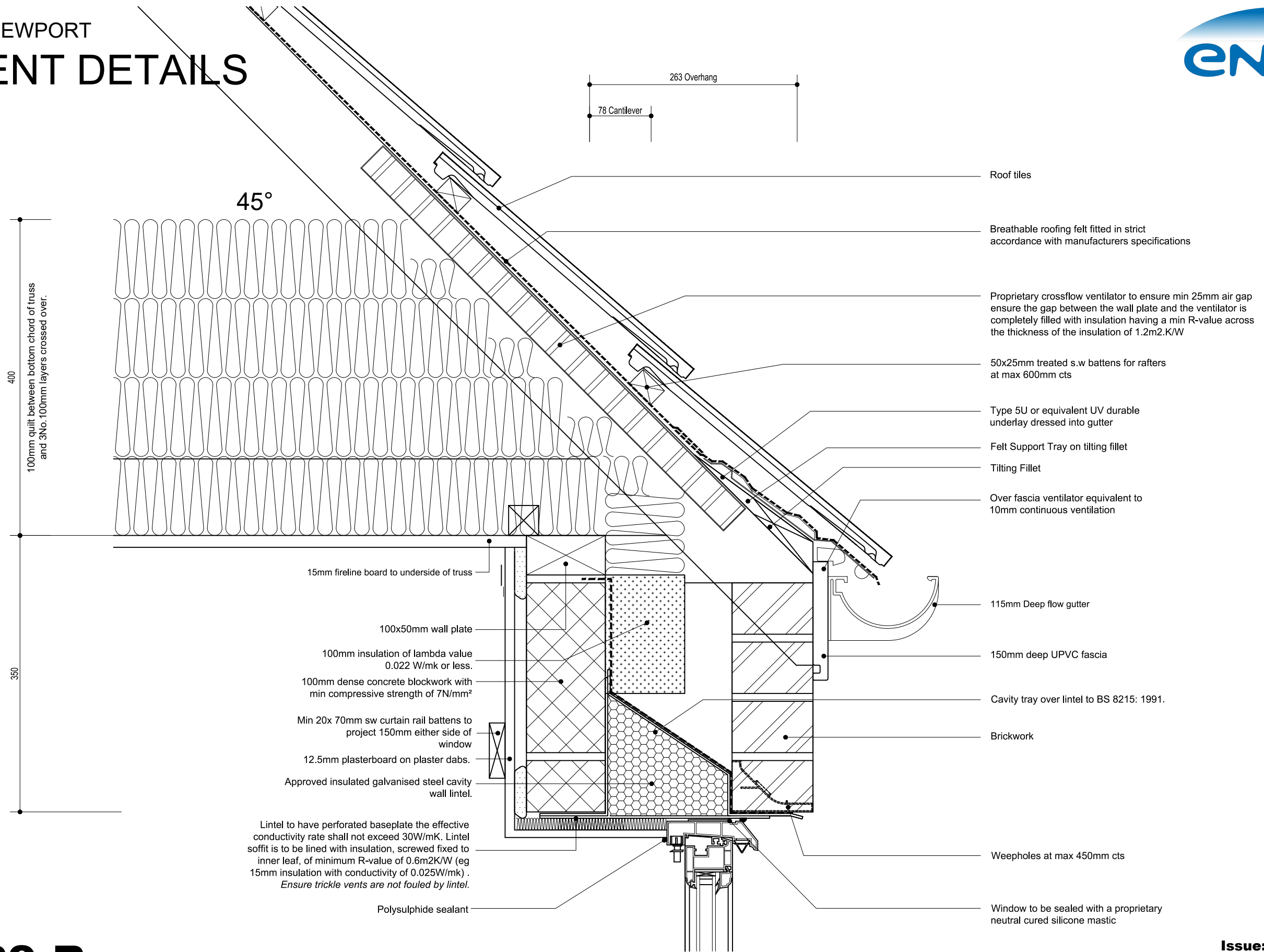
Revision: .

Scale - 1:5

Project No. 1839

HERBERT ROAD, NEWPORT

APARTMENT DETAILS



A-R9-B: 45 DEG CLIPPED EAVES - BRICKWORK

Issue: November 2018

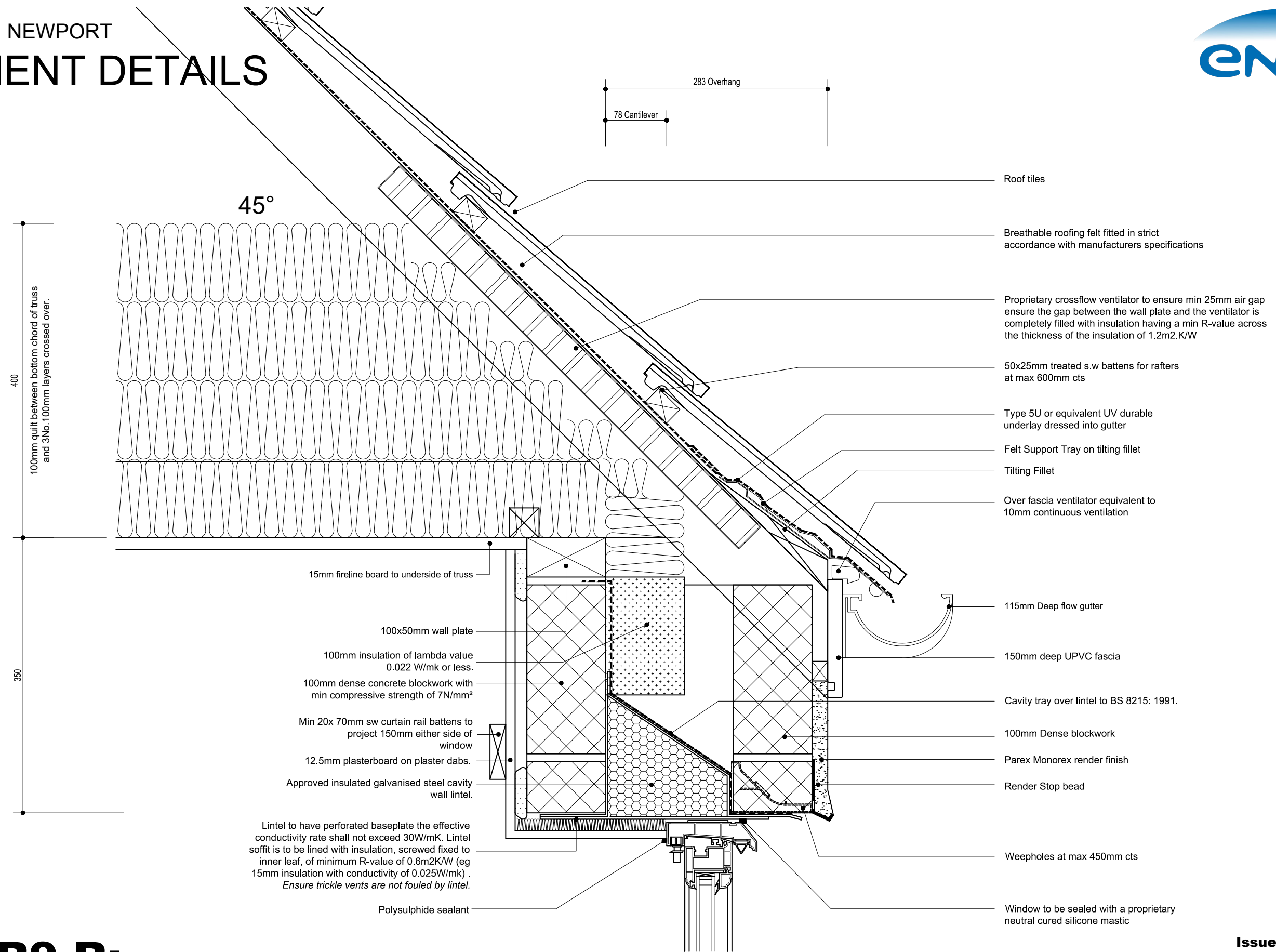
Revision: .

Scale - 1:5

Project No. 1839

HERBERT ROAD, NEWPORT

APARTMENT DETAILS



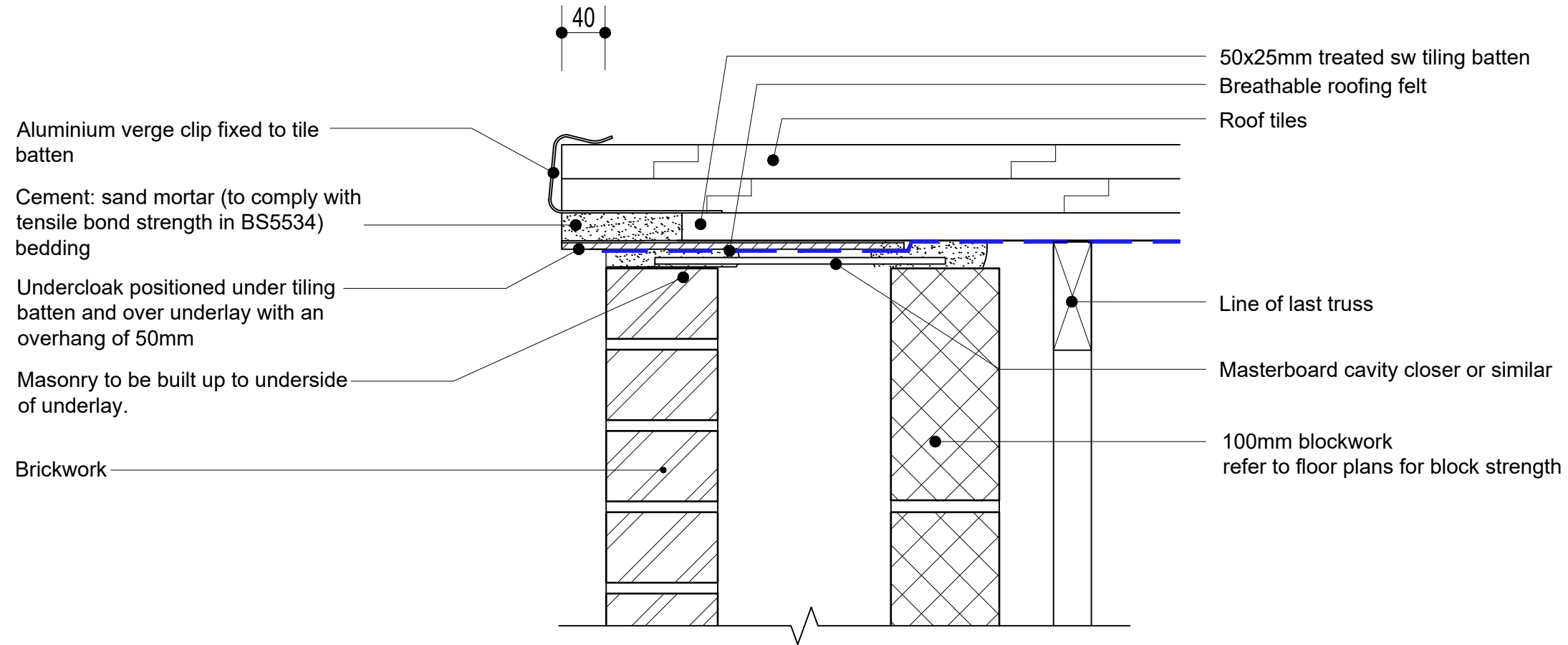
A-R9-R: 45 DEG CLIPPED EAVES - RENDER

Issue: November 2018

Revision: .

Scale - 1:5

APARTMENT DETAILS



MORTAR BEDDED VERGE

Ensure that gable wall is brought up level with top of rafters.

Carry underlay onto gable rafter and fix 6mm fibre cement undercloak of approved colour on top of underlay with 25 mm galvanised clout nails projecting 50mm beyond face of bargeboard.

Carry tiling battens over undercloak and finish on centre of gable rafter.

Fix tiles every course with verge clips.

Fix standard tiles, with interlock removed, and left hand half tiles to left hand verges.

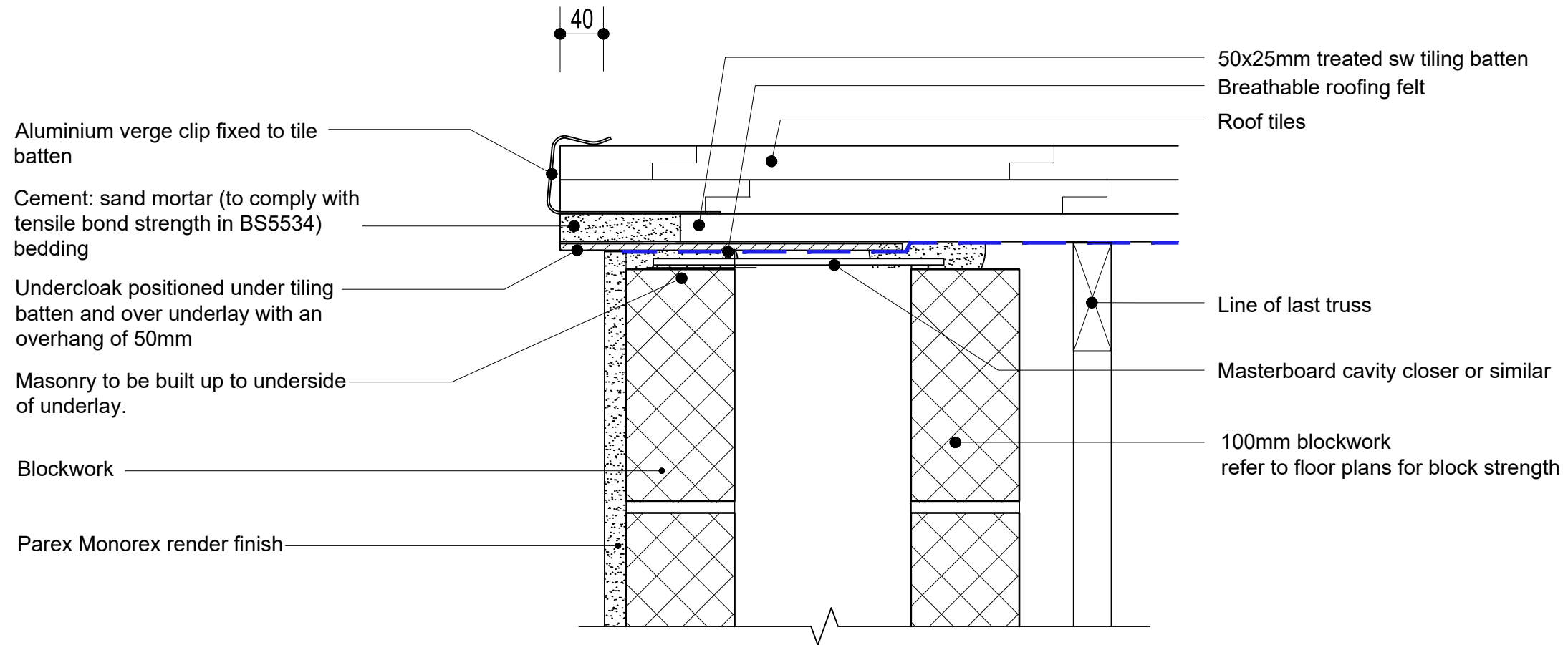
Fix standard tiles and right hand half tiles to right hand verges. Use half tile pair.

Bed edge of verge tiles on 100mm wide bed of mortar ensuring that mortar is not displaced or cracked by mechanical fixing of tiles.



A-R10-B: WET VERGE - BRICKWORK

APARTMENT DETAILS



MORTAR BEDDED VERGE

Ensure that gable wall is brought up level with top of rafters.

Carry underlay onto gable rafter and fix 6mm fibre cement undercloak of approved colour on top of underlay with 25 mm galvanised clout nails projecting 50mm beyond face of bargeboard.

Carry tiling battens over undercloak and finish on centre of gable rafter.

Fix tiles every course with verge clips.

Fix standard tiles, with interlock removed, and left hand half tiles to left hand verges.

Fix standard tiles and right hand half tiles to right hand verges. Use half tile pair.

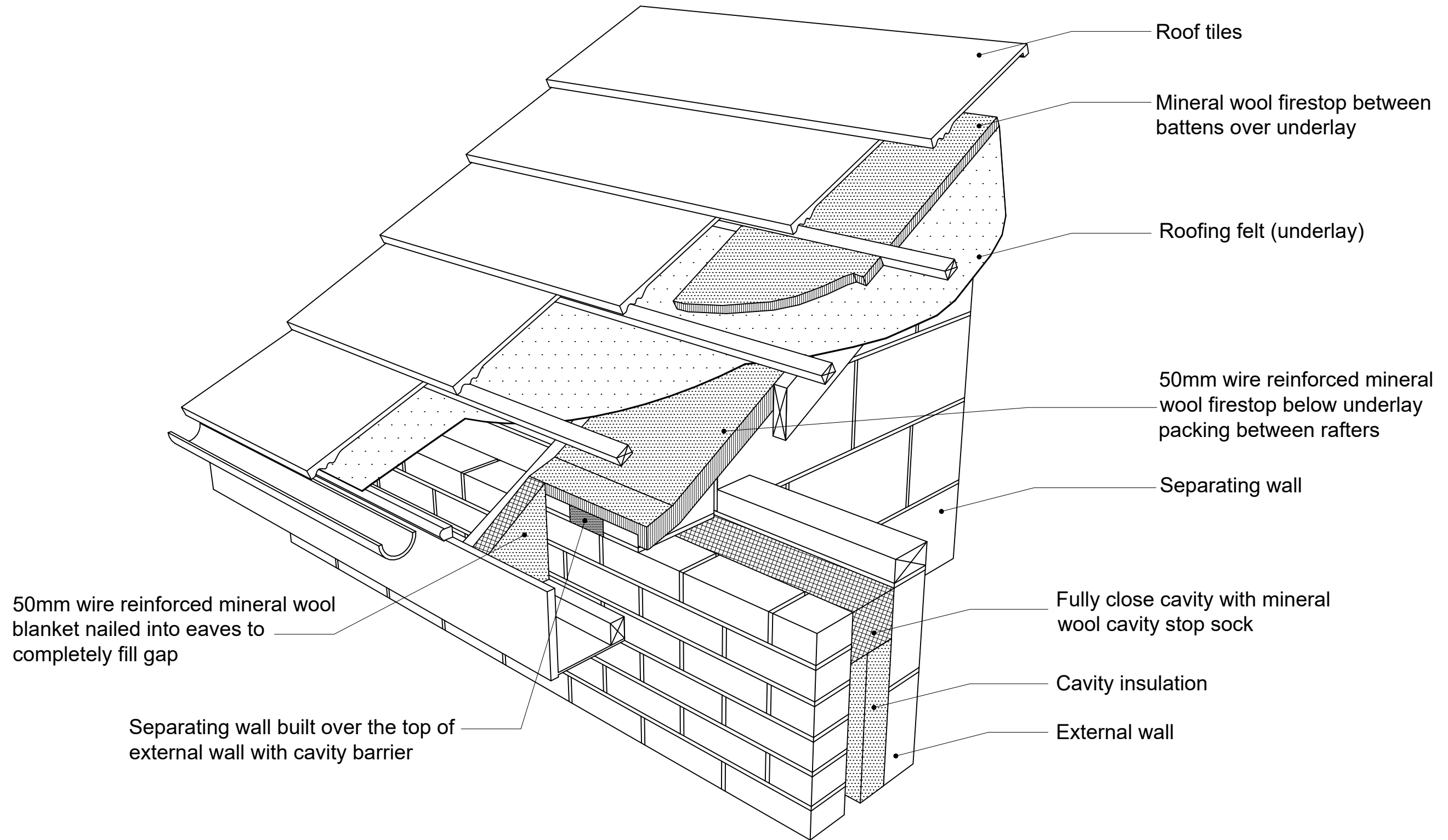
Bed edge of verge tiles on 100mm wide bed of mortar ensuring that mortar is not displaced or cracked by mechanical fixing of tiles.



Project No. 1839

HERBERT ROAD, NEWPORT

APARTMENT DETAILS



A-R11: SEPARATING WALL AT EAVES

Issue: November 2018

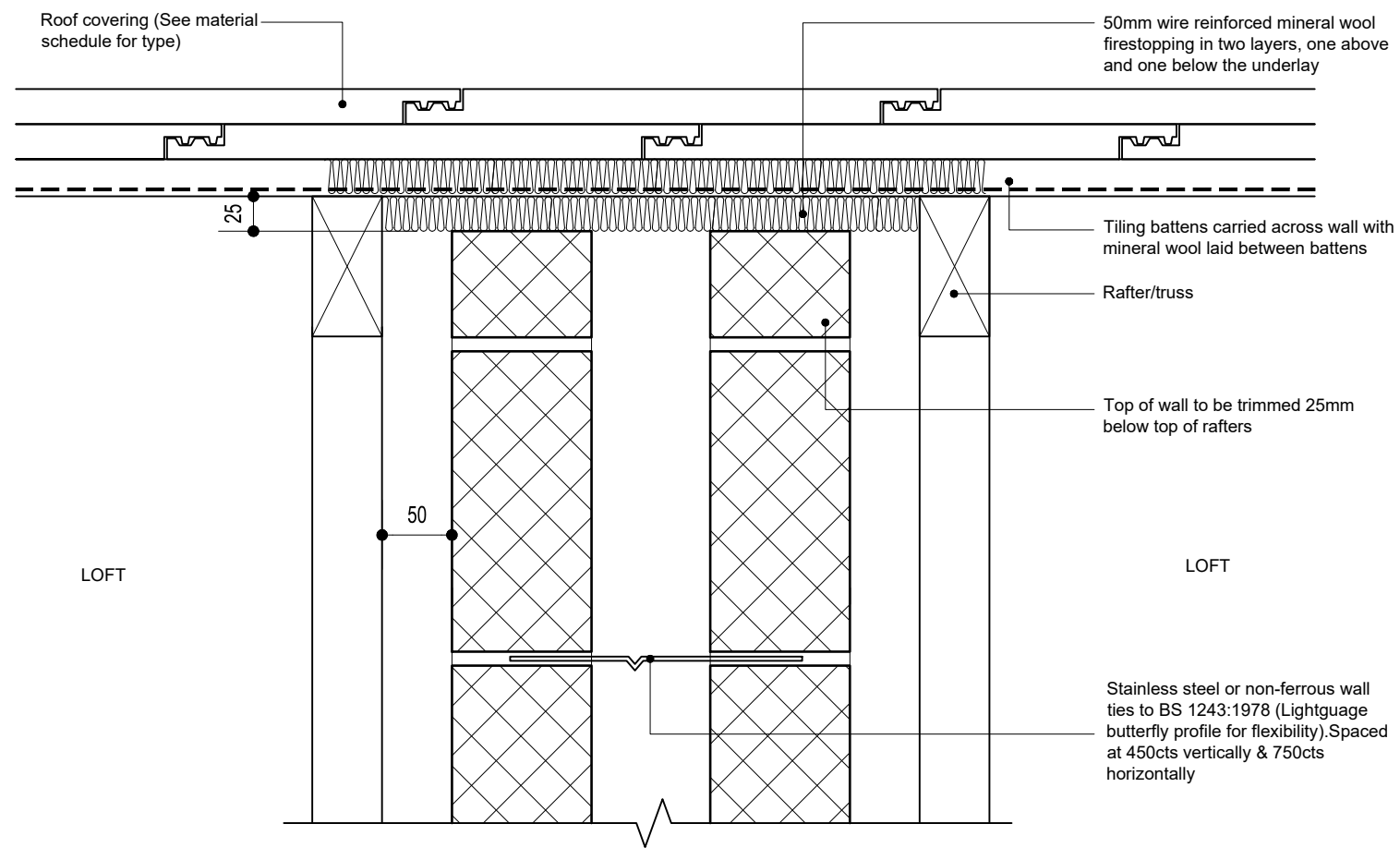
Revision: .

Scale - n/a

Project No. 1839

HERBERT ROAD, NEWPORT

APARTMENT DETAILS



A-R12: SEPARATING WALL AT ROOF

Issue: November 2018

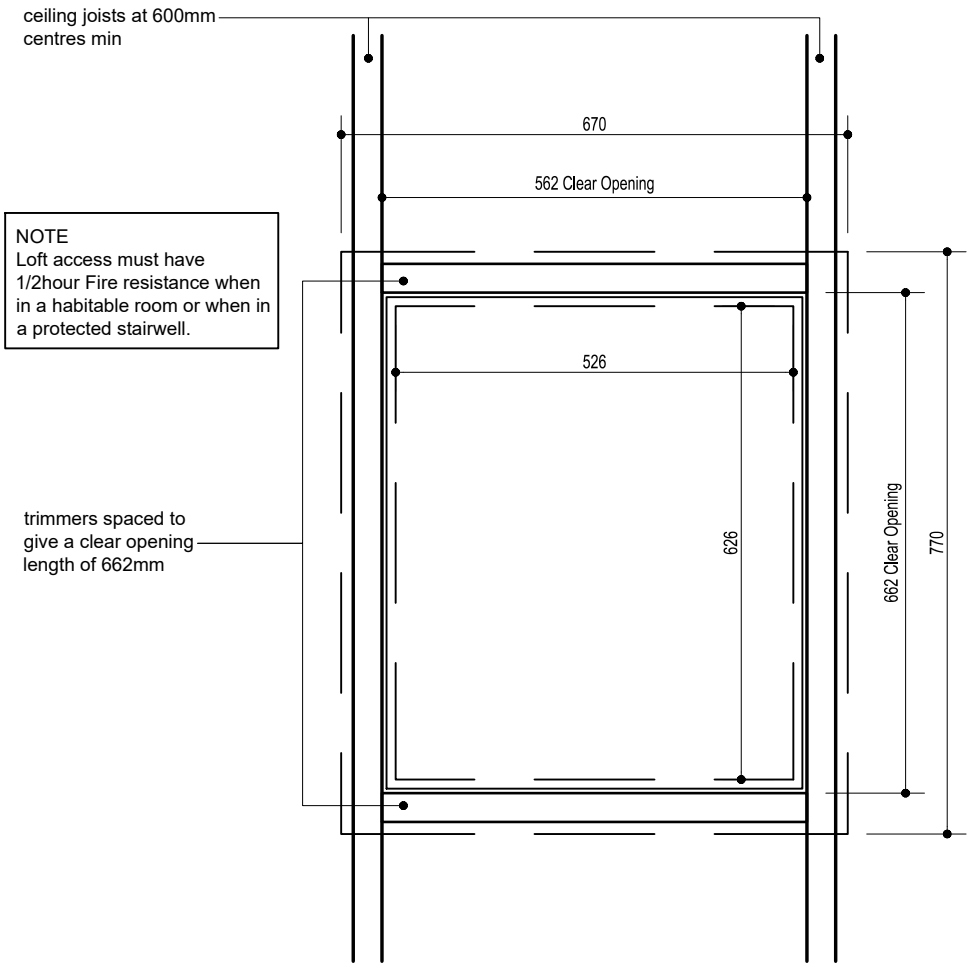
Revision: .

Scale - 1:5

Project No. 1839

HERBERT ROAD, NEWPORT

APARTMENT DETAILS



PROPRIETARY INSULATED ACCESS DOOR RECOMMENDED FOR THE ABOVE FRAME DIMENSIONS. REFER TO MANUFACTURER'S DETAILS FOR INSTALLATION AND FIXING DETAILS.



A-R13: LOFT ACCESS

Issue: November 2018

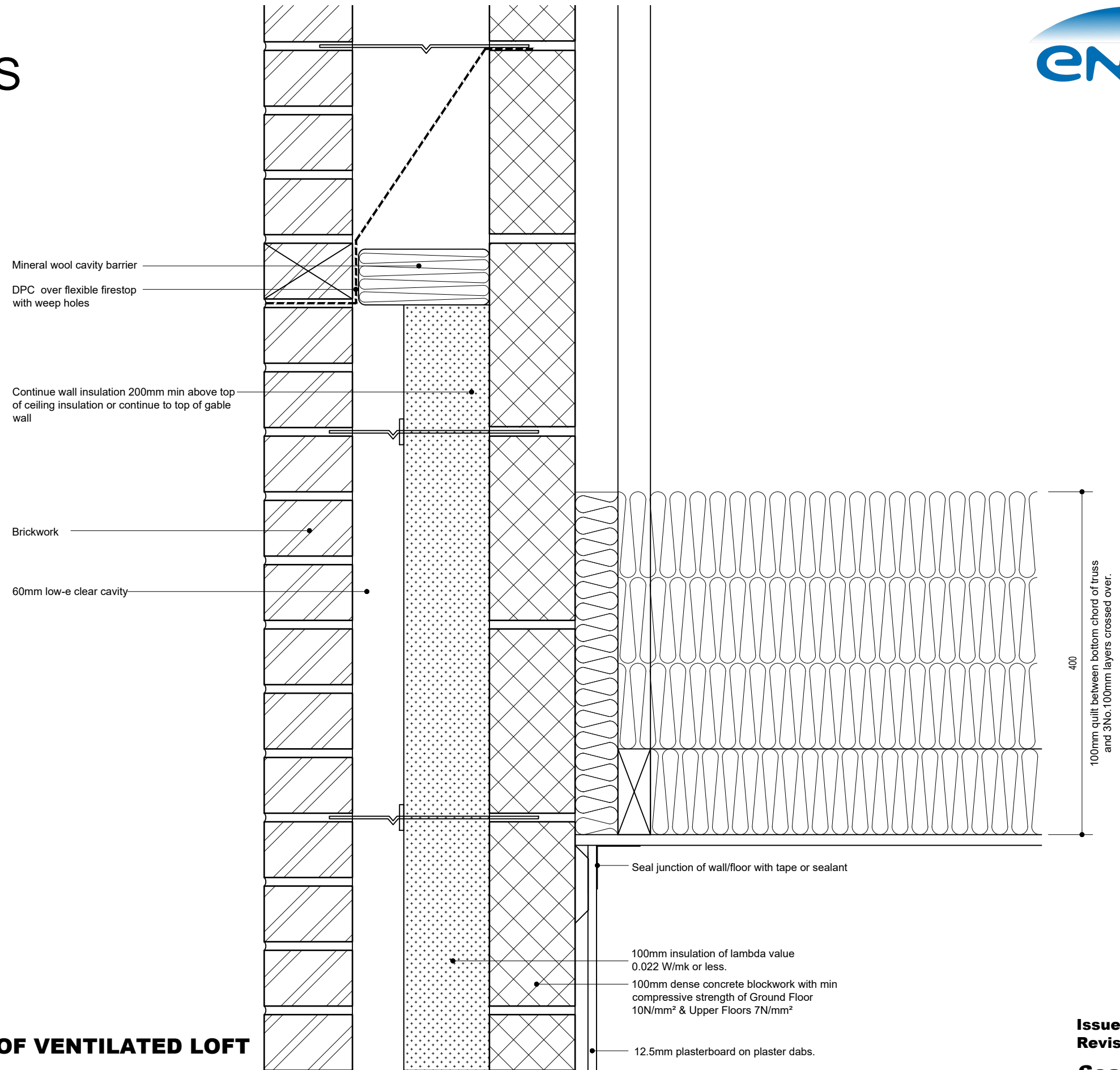
Revision: .

Scale - 1:10

Project No. 1839

HERBERT ROAD, NEWPORT

APARTMENT DETAILS



A-R14: PITCHED ROOF VENTILATED LOFT

Issue: November 2018
Revision: .
Scale - 1:5