

Project No. 1839

HERBERT ROAD, NEWPORT



## HOUSE TYPE DETAILS : Index 1 of 2

Dwg No.	Drawing Title.	Rev.
H-B1	PART M ENTRANCE	-
H-B2	NON PART M ENTRANCE	-
H-B3	EXTERNAL WALL / SLAB EDGE	-
H-B4	PARTYWALL / FLOOR	-
H-B5	NON LOADBEARING INTERNAL PARTITION / FLOOR	-
H-B6	TYPICAL STUD BUTTRESS WALL	-
H-W1-B	WINDOW CILL WITHIN BRICKWORK	-
H-W1-R	WINDOW CILL WITHIN RENDER	-
H-W2-B	WINDOW HEAD WITHIN BRICKWORK	-
H-W2-R	WINDOW HEAD WITHIN RENDER	-
H-W3	1800MM DEEP WINDOW	-
H-W4	WINDOW BOXING	-
H-W5-B	WINDOW/DOOR CHECK REVEAL BRICKWORK	-
H-W5-R	WINDOW/DOOR CHECK REVEAL RENDER	-
H-W6	SEPARATING WALL PLANS	-
H-C1	INTERNAL DOOR SIZES	-
H-C2	SVP BOXING	-
H-C3	LOW LEVEL BOXING	-
H-C4	SAFETY GLAZING	-
H-F1	FLAT OVER GARAGE - FLOOR / EXTERNAL WALL	-
H-F2	ROOF OVER PROJECTING BAY	-
H-F3	INTERNAL FLOOR JUNCTION WITH SEPARATING WALL	-

A      DETAIL H-F3 ADDED  
REV.    DESCRIPTION

20.02.19  
DATE



10 Goldtops  
Newport  
NP20 4PH

t.                    01633 844970  
e. info@hammond-ltd.co.uk



Project No. 1839

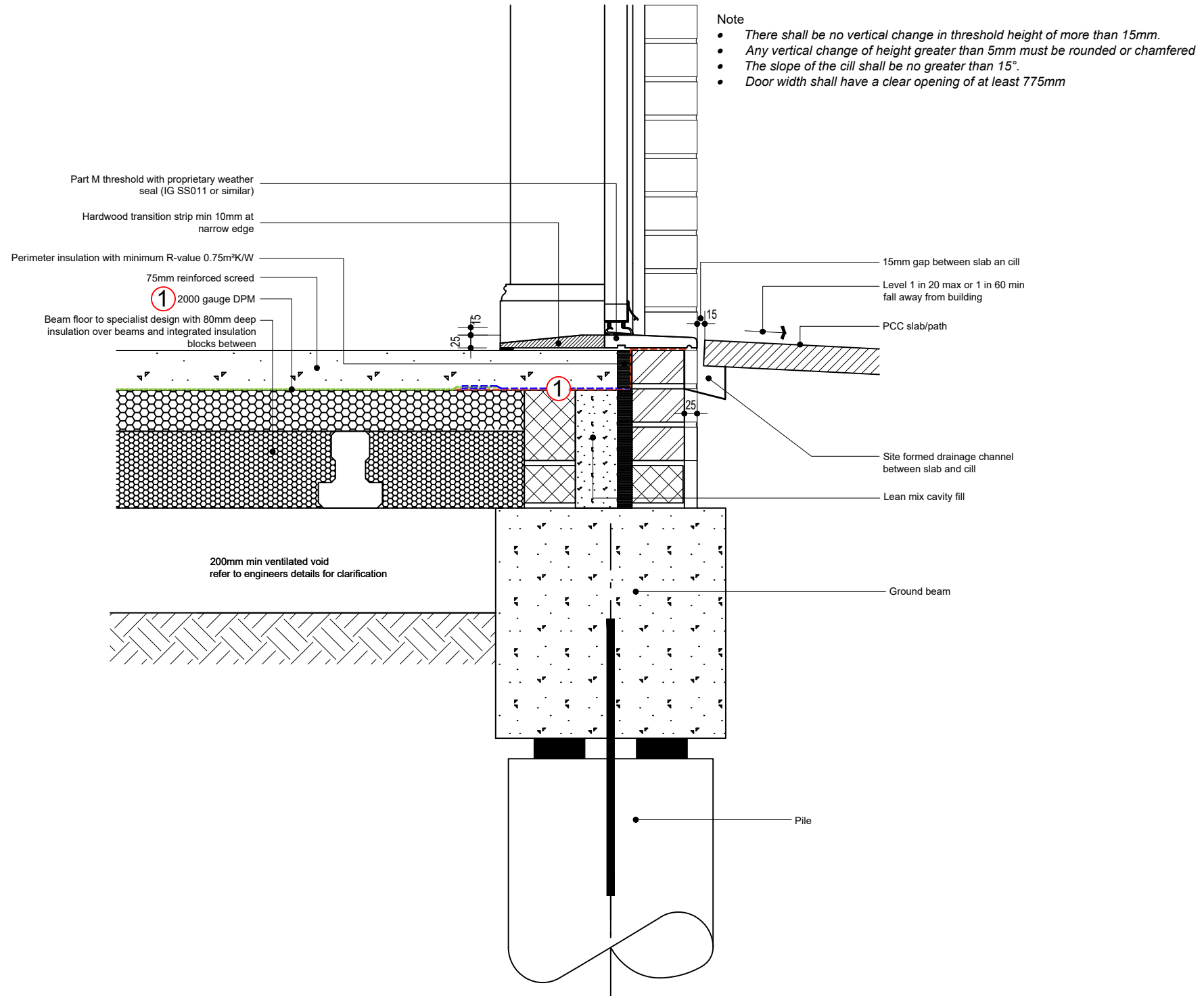
HERBERT ROAD, NEWPORT

# HOUSE TYPE DETAILS



**UNITS 37 ONWARDS REQUIRE GAS CATEGORY 3 PROTECTION**

- ① VOC Barrier - BS8485:2015 compliant DPM's / DPC's.
- ② Additional telescopic vents to external cavity walls may be required. *TBC*
- ③ Cavity support to membrane between vents, in the form of rigid insulation. *TBC*



## H-B1: PART M ENTRANCE

Issue: FEBRUARY 2019  
Revision: -  
Scale - 1:10

Project No. 1839

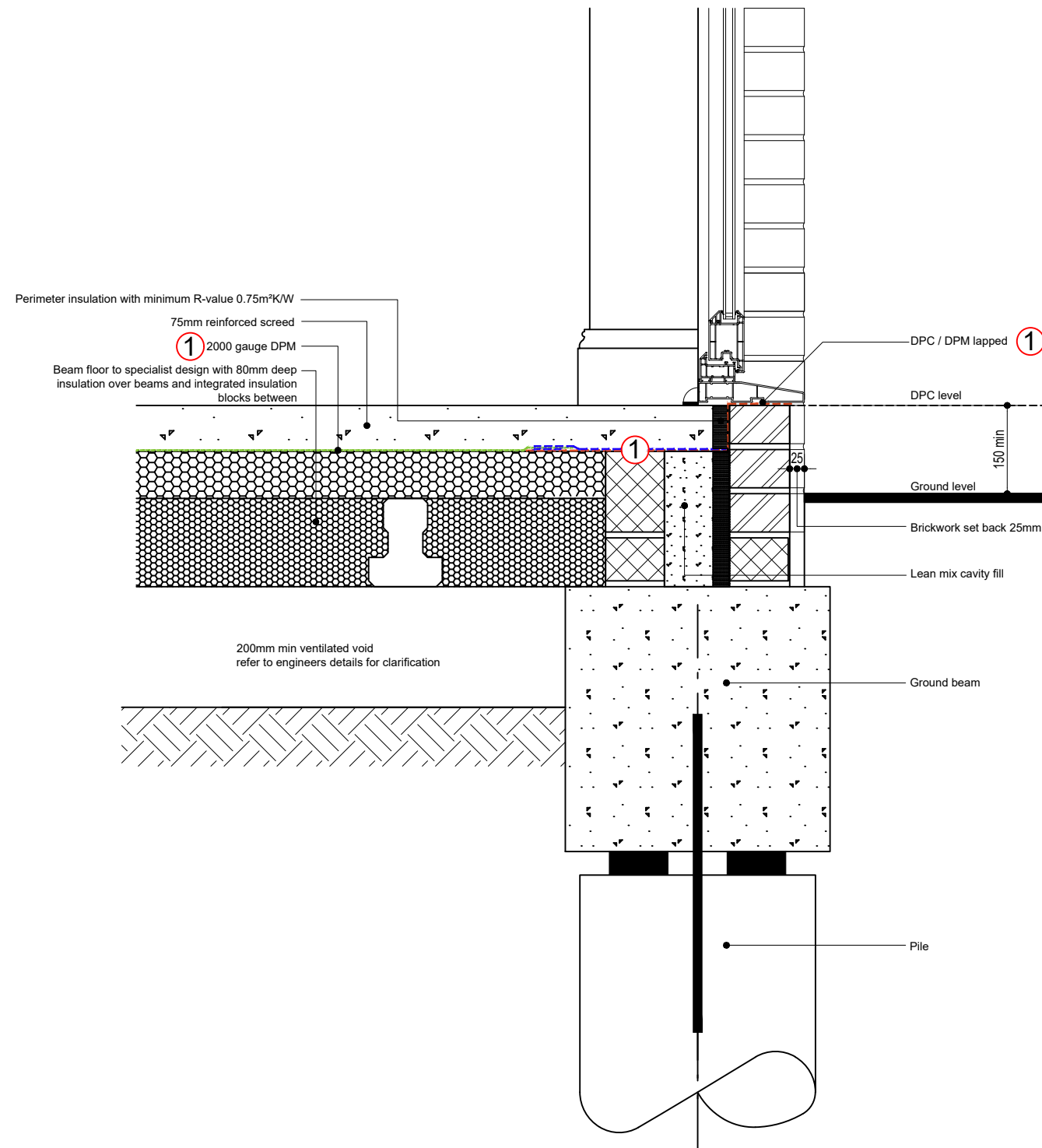
HERBERT ROAD, NEWPORT

# HOUSE TYPE DETAILS



**UNITS 37 ONWARDS REQUIRE  
GAS CATEGORY 3 PROTECTION**

- ① VOC Barrier - BS8485:2015 compliant DPM's / DPC's.
- ② Additional telescopic vents to external cavity walls may be required. *TBC*
- ③ Cavity support to membrane between vents, in the form of rigid insulation. *TBC*



**H-B2: NON PART M ENTRANCE**

Issue: FEBRUARY 2019

Revision: -

Scale - 1:10

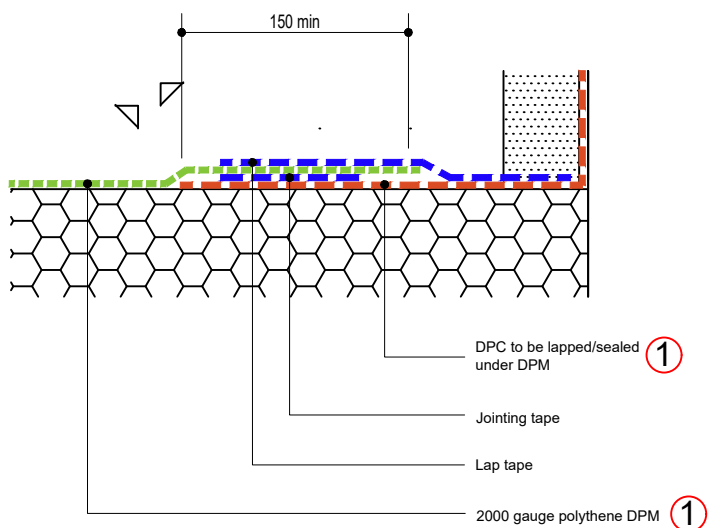
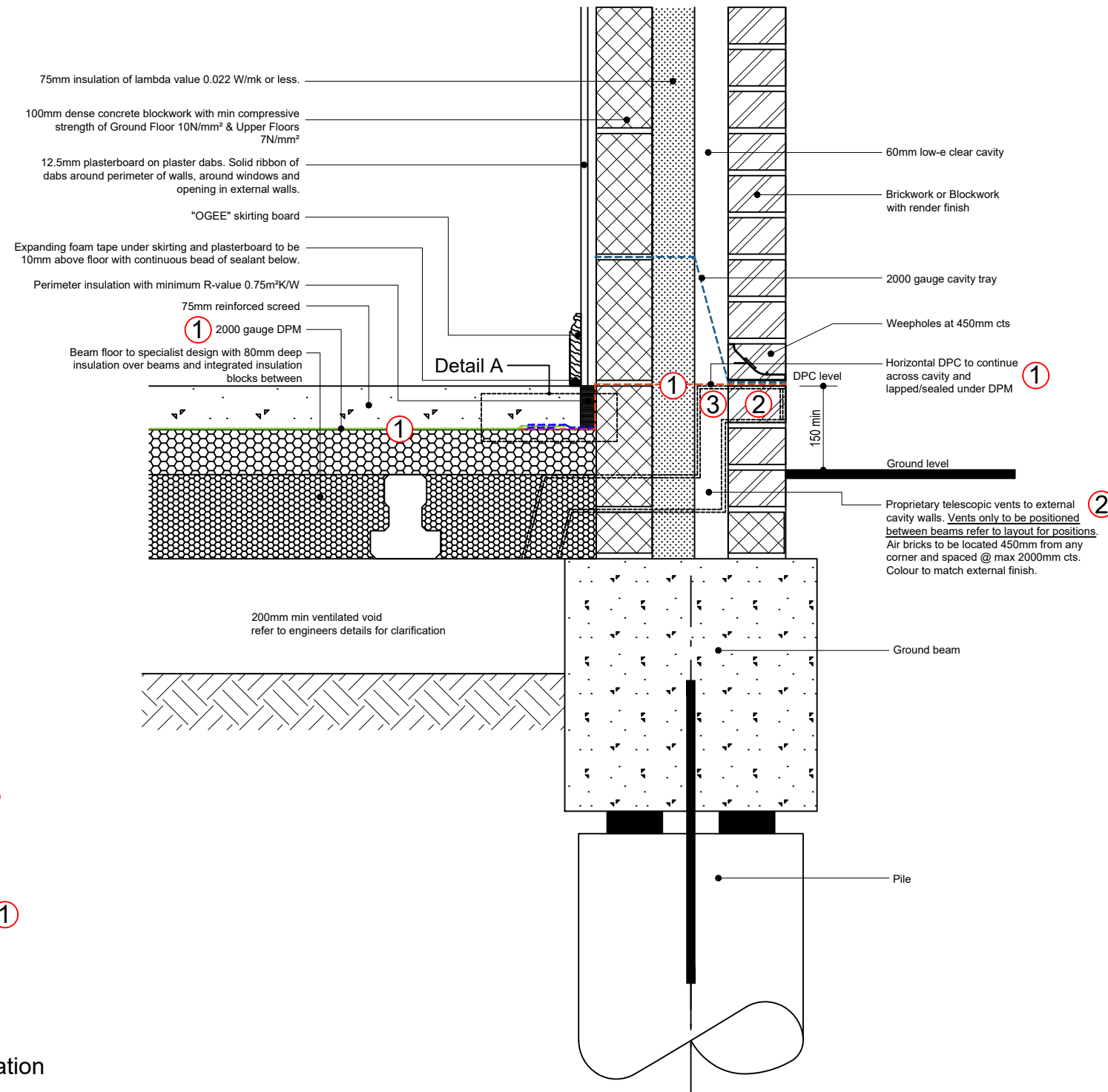
Project No. 1839  
 HERBERT ROAD, NEWPORT  
**HOUSE TYPE DETAILS**



① NOTE Barrier required across whole floor area  
 Minimum membrane to be 2000 gauge  
 polythene sheet. All joints, cavity and service  
 entries in barrier to be sealed

**UNITS 37 ONWARDS REQUIRE  
 GAS CATEGORY 3 PROTECTION**

- ① VOC Barrier - BS8485:2015  
 compliant DPM's / DPC's.
- ② Additional telescopic vents to  
 external cavity walls may be  
 required. *TBC*
- ③ Cavity support to membrane  
 between vents, in the form of  
 rigid insulation. *TBC*



**Detail A**  
**Indicative lap & seal joint.**  
 Refer to manufactures details for further information

Project No. 1839

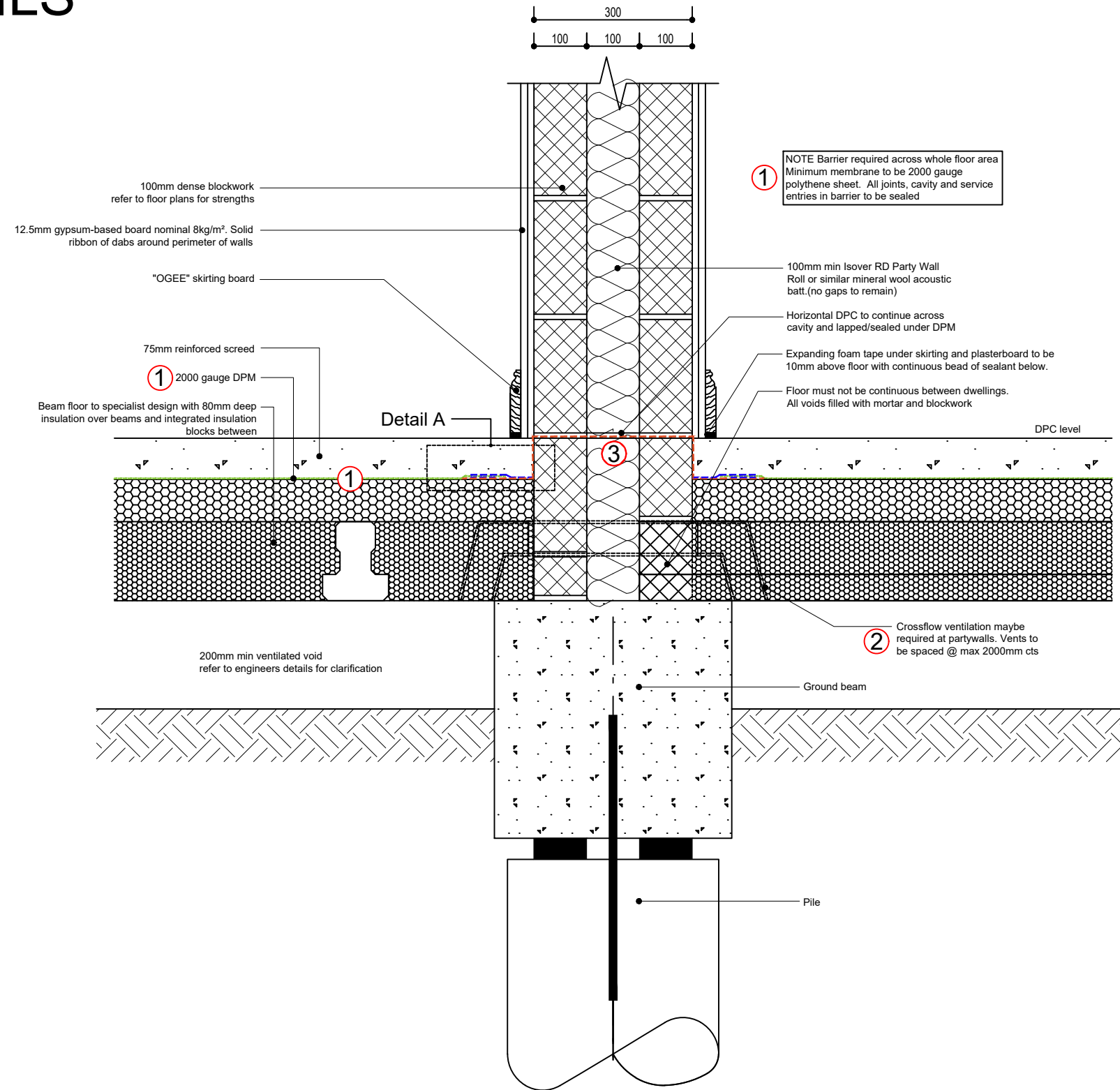
HERBERT ROAD, NEWPORT

# HOUSE TYPE DETAILS



**UNITS 37 ONWARDS REQUIRE GAS CATEGORY 3 PROTECTION**

- ① VOC Barrier - BS8485:2015 compliant DPM's / DPC's.
- ② Additional telescopic vents to external cavity walls may be required. *TBC*
- ③ Cavity support to membrane between vents, in the form of rigid insulation. *TBC*



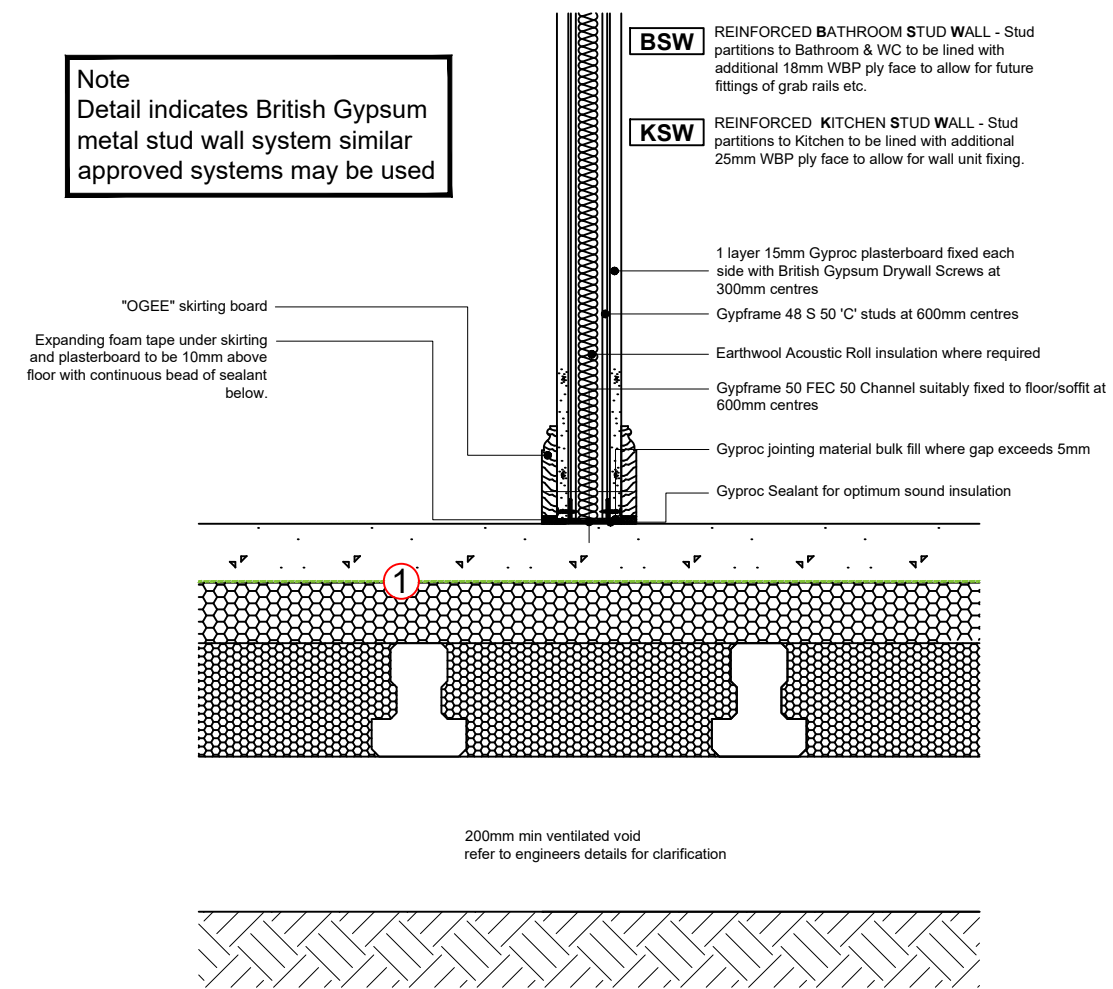
**H-B5: PARTYWALL / FLOOR**

Issue: February 2019  
Revision: -  
Scale - 1:10

Project No. 1839  
 HERBERT ROAD, NEWPORT  
**HOUSE TYPE DETAILS**



- UNITS 37 ONWARDS REQUIRE GAS CATEGORY 3 PROTECTION**
- ① VOC Barrier - BS8485:2015 compliant DPM's / DPC's.
  - ② Additional telescopic vents to external cavity walls may be required. *TBC*
  - ③ Cavity support to membrane between vents, in the form of rigid insulation. *TBC*



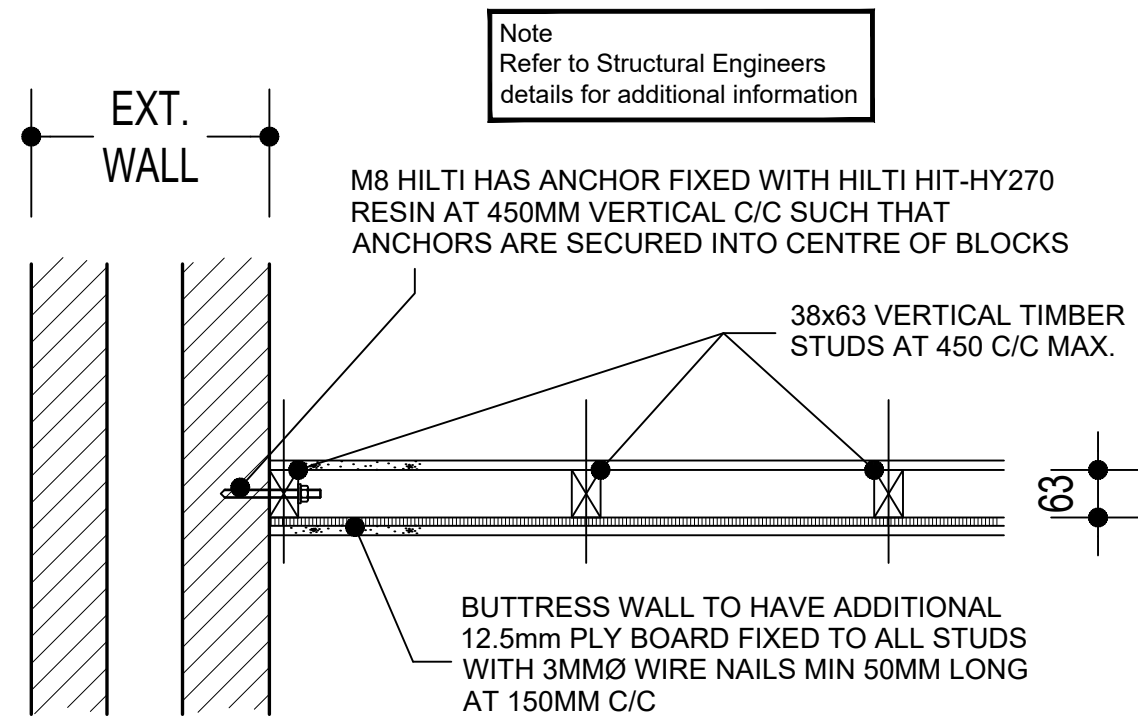
**H-B4: NON LOADBEARING INTERNAL PARTITION / FLOOR**

Issue: FEBRUARY 2019  
 Revision: -  
 Scale - 1:10

Project No. 1839

HERBERT ROAD, NEWPORT

# HOUSE TYPE DETAILS



## H-B5: TYPICAL STUD BUTTRESS WALL - PLAN

Issue: FEBRUARY 2019

Revision: -

Scale - 1:10

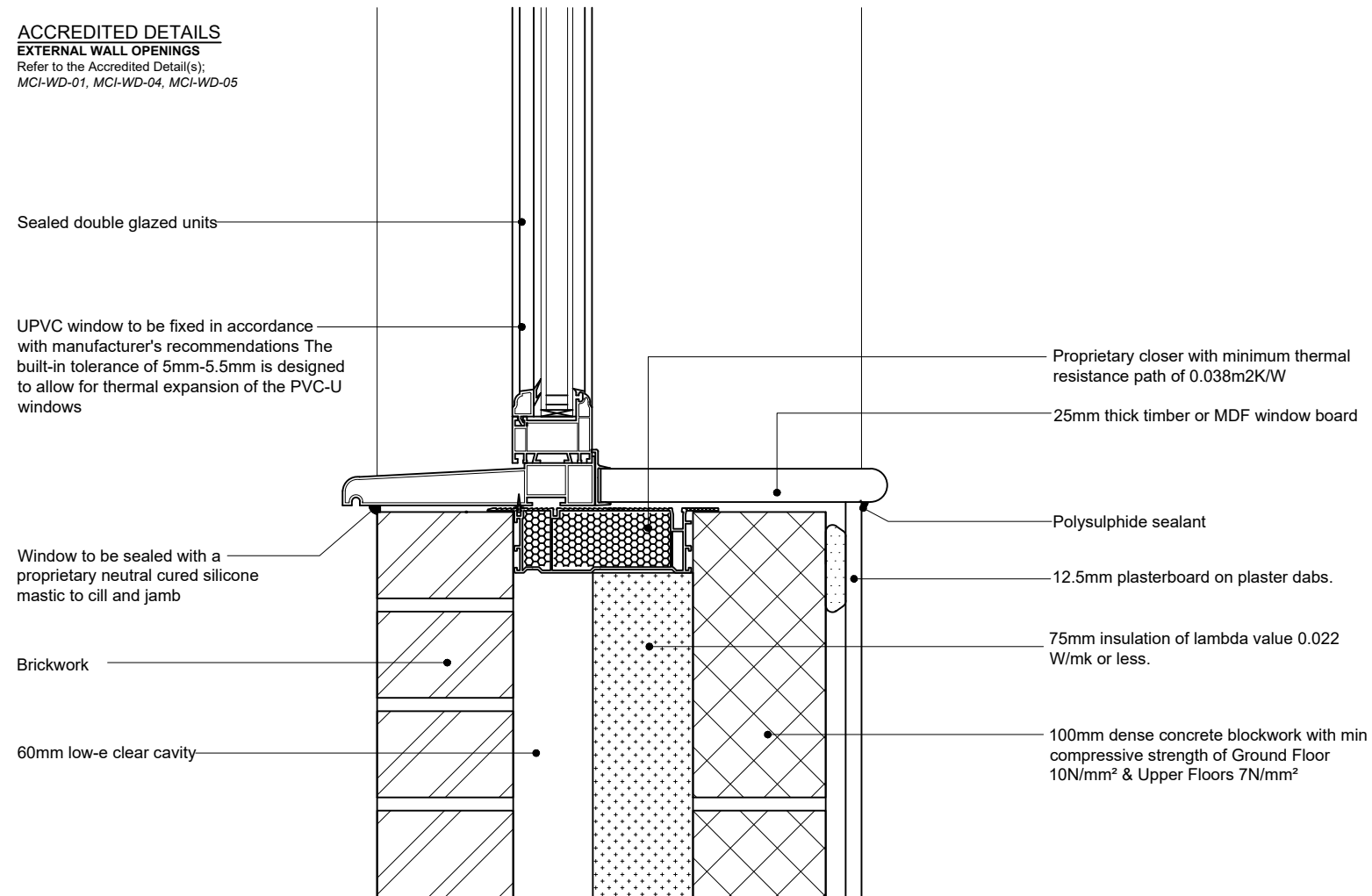
Project No. 1839

HERBERT ROAD, NEWPORT

# HOUSE TYPE DETAILS



**ACCREDITED DETAILS**  
**EXTERNAL WALL OPENINGS**  
Refer to the Accredited Detail(s):  
MCI-WD-01, MCI-WD-04, MCI-WD-05



## H-W1-B: WINDOW CILL WITHIN BRICKWORK

Issue: FEBRUARY 2019

Revision: .

Scale - 1:5

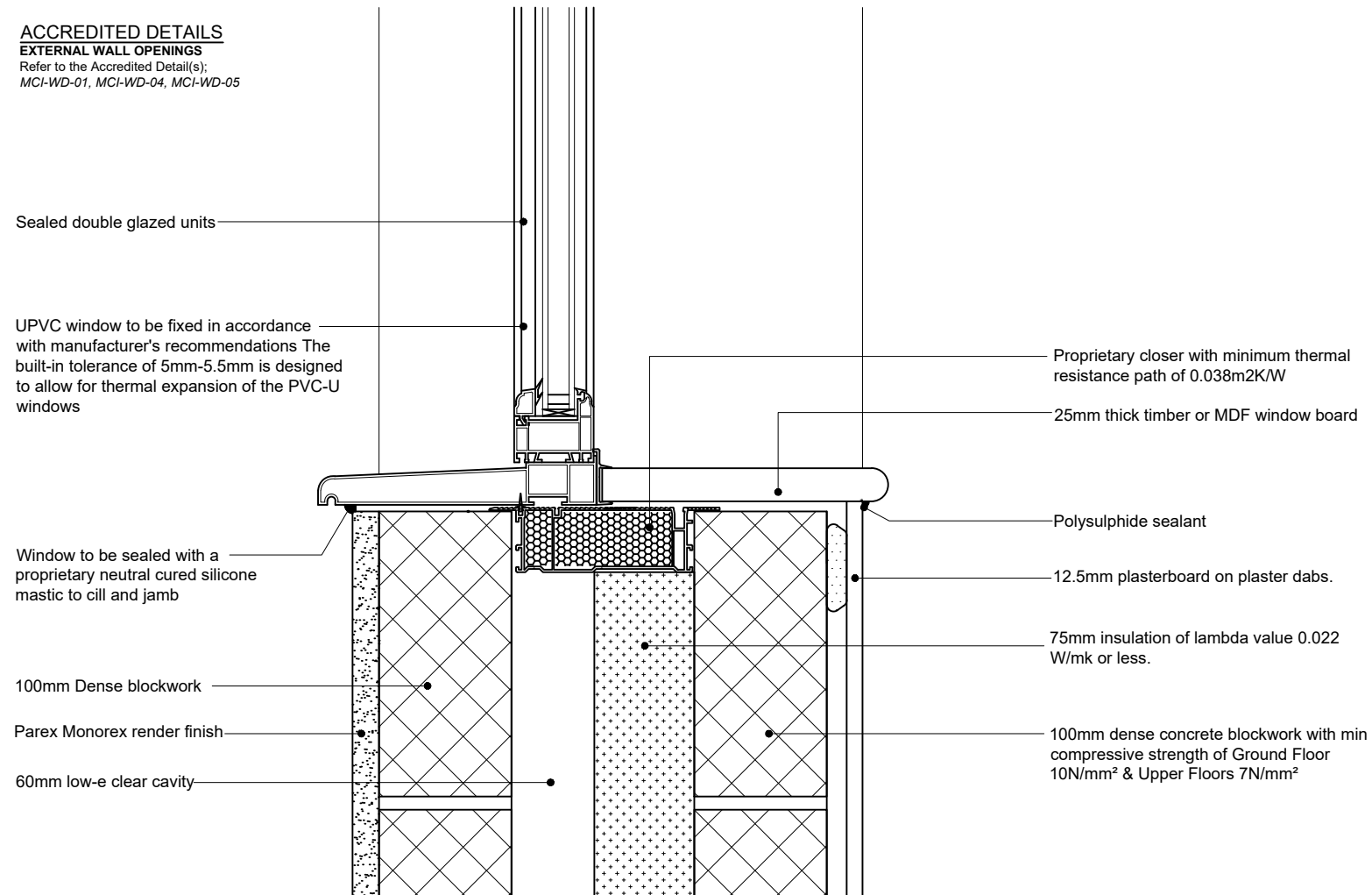
Project No. 1839

HERBERT ROAD, NEWPORT

# HOUSE TYPE DETAILS



**ACCREDITED DETAILS**  
**EXTERNAL WALL OPENINGS**  
Refer to the Accredited Detail(s):  
MCI-WD-01, MCI-WD-04, MCI-WD-05



## H-W1-R: WINDOW CILL WITHIN RENDER

Issue: FEBRUARY 2019

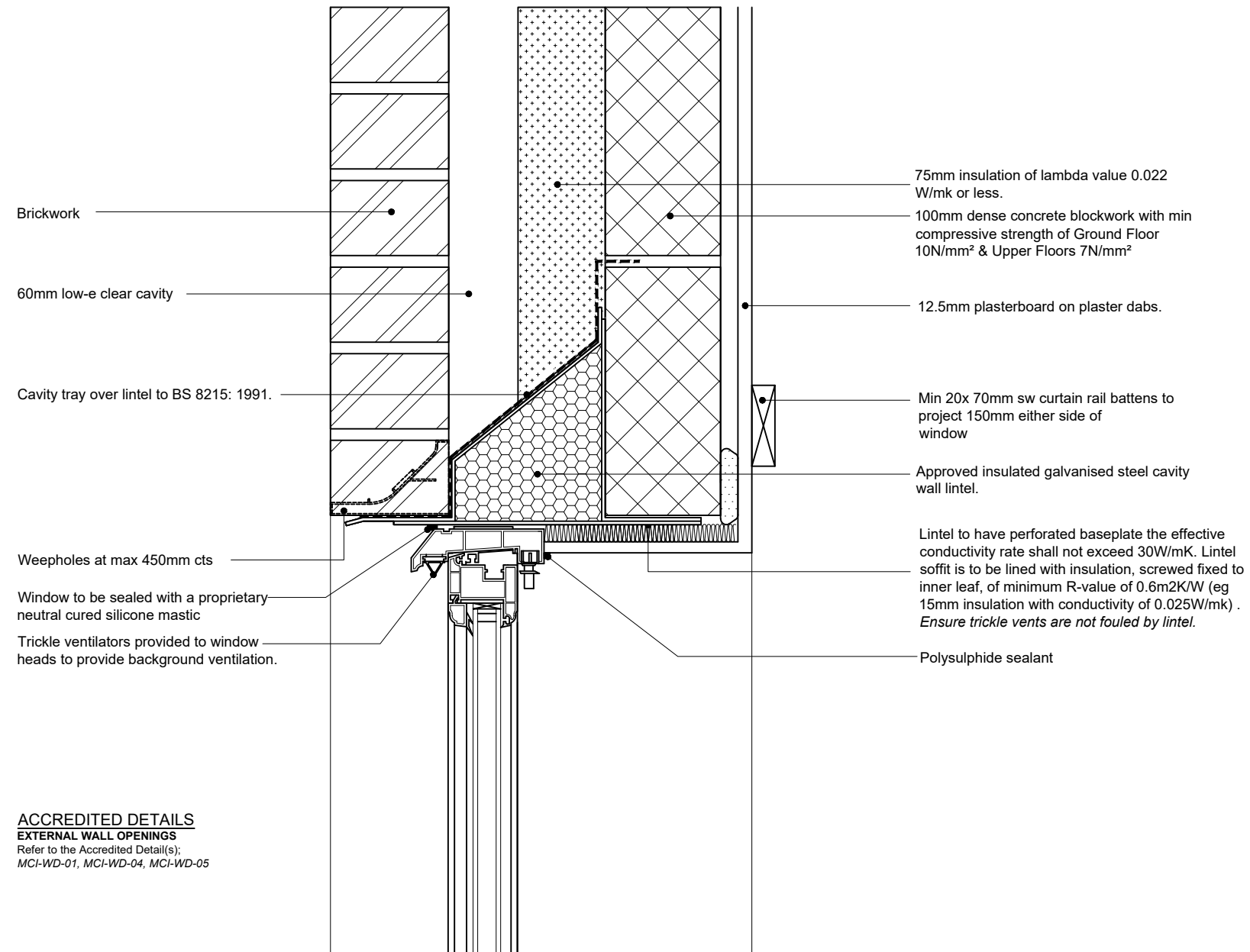
Revision: .

Scale - 1:5

Project No. 1839

HERBERT ROAD, NEWPORT

# HOUSE TYPE DETAILS



## H-W2-B: WINDOW HEAD WITHIN BRICKWORK

Issue: FEBRUARY 2019

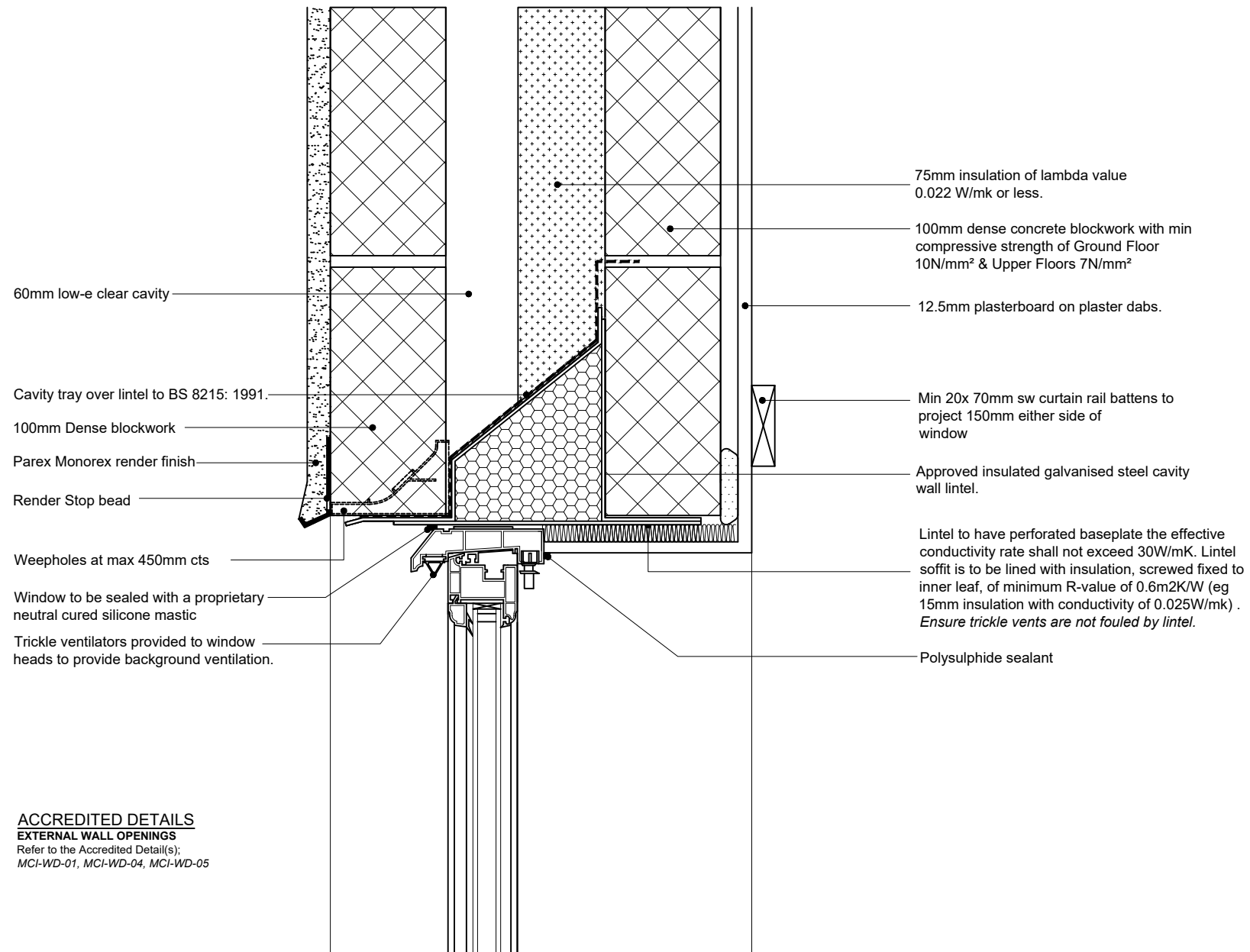
Revision: .

Scale - 1:5

Project No. 1839

HERBERT ROAD, NEWPORT

# HOUSE TYPE DETAILS



## H-W2-R: WINDOW HEAD WITHIN RENDER

Issue: FEBRUARY 2019

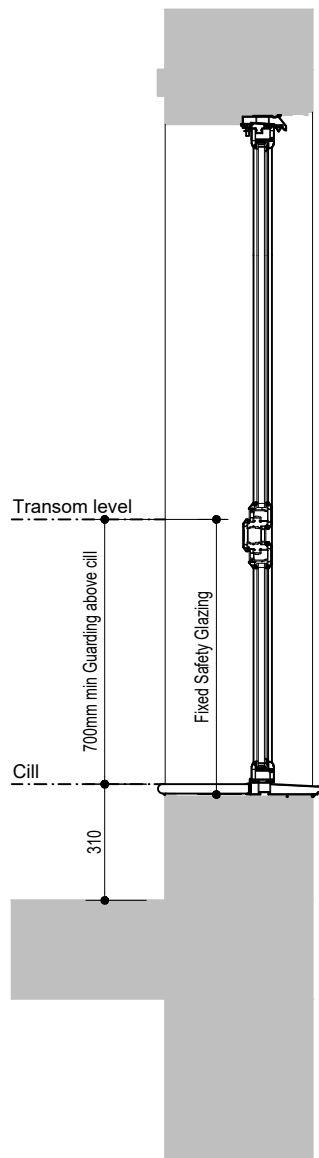
Revision: .

Scale - 1:5

Project No. 1839

HERBERT ROAD, NEWPORT

# HOUSE TYPE DETAILS



Glazing acting as guarding should be designed to resist the forces and impact as laid down in BS6399 and BS6180 Therefore, glazing that protects people from falling must meet these requirements

**FIXED LOW LEVEL GLAZING**  
Where the design incorporates low level glazing, less than 800mm above internal floor level such as a window, that is fixed (not openable), glazing and the framing will need to function as guarding where the difference in floor levels exceeds 600mm. The glass should be designed to resist the forces referred to in the British Standards above.



## H-W3: 1800MM DEEP WINDOW

Issue: FEBRUARY 2019

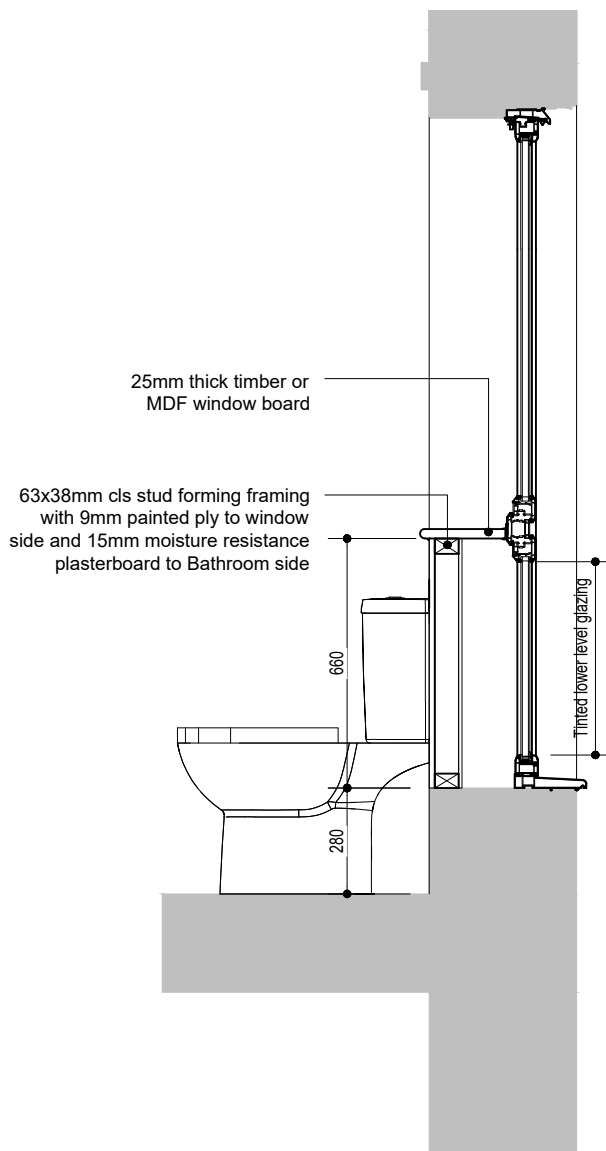
Revision: .

Scale - 1:20

Project No. 1839

HERBERT ROAD, NEWPORT

# HOUSE TYPE DETAILS



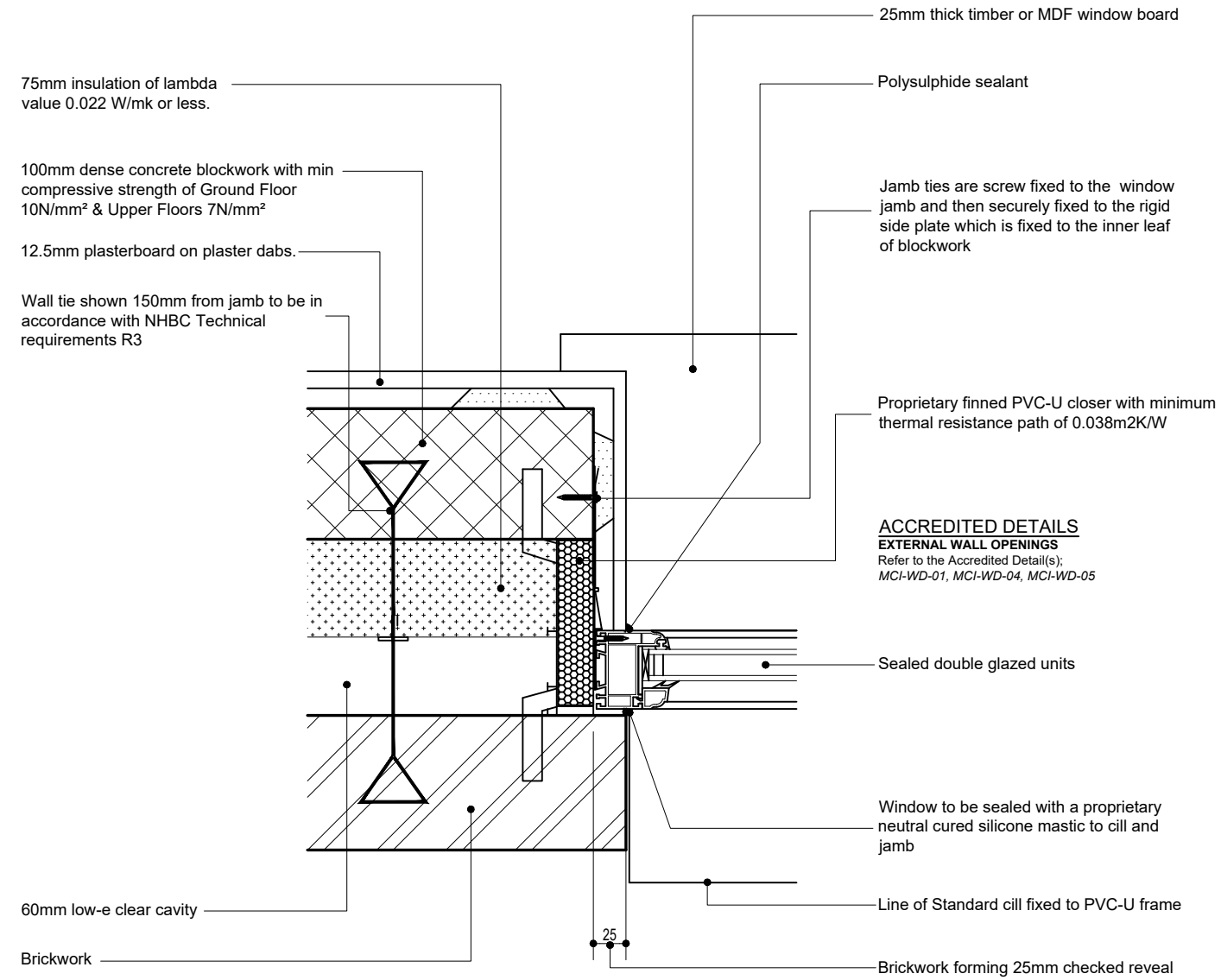
## H-W4: WINDOW BOXING

Issue: FEBRUARY 2019

Revision: .

Scale - 1:20

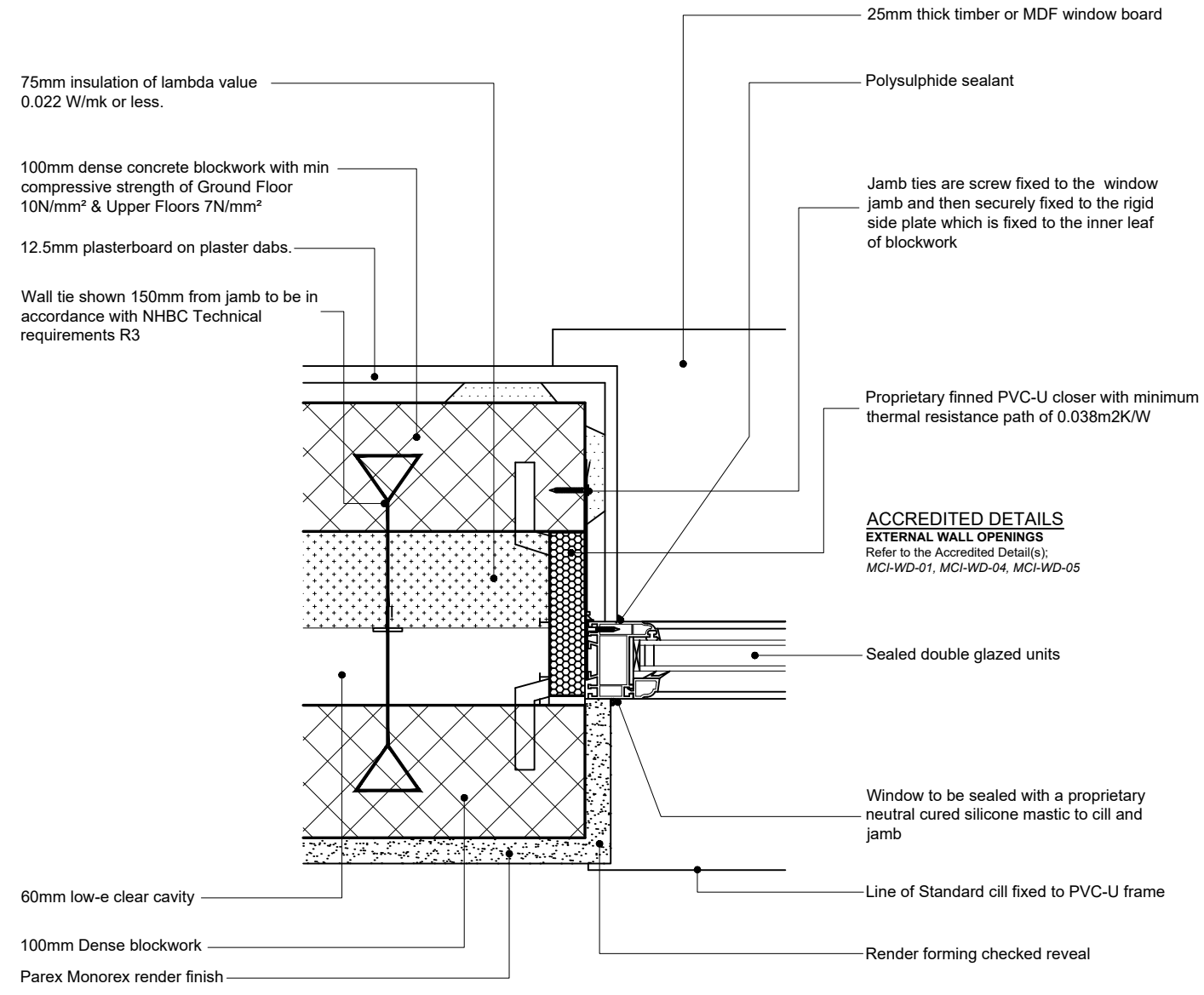
Project No. 1839  
 HERBERT ROAD, NEWPORT  
**HOUSE TYPE DETAILS**



**H-W5-B: WINDOW/DOOR CHECK REVEAL BRICKWORK**

Issue: FEBRUARY 2019  
 Revision: .  
 Scale - 1:5

Project No. 1839  
 HERBERT ROAD, NEWPORT  
**HOUSE TYPE DETAILS**



**H-W5-B: WINDOW/DOOR CHECK REVEAL RENDER**

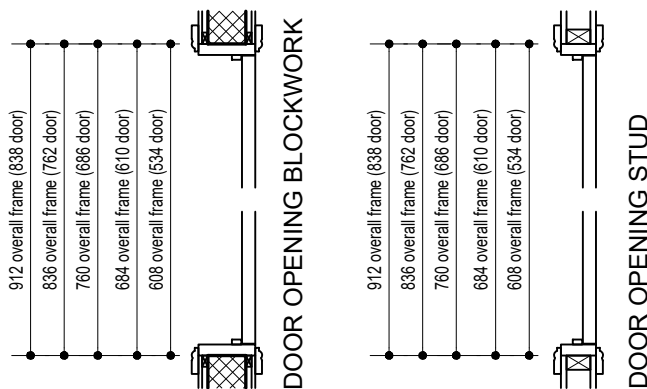
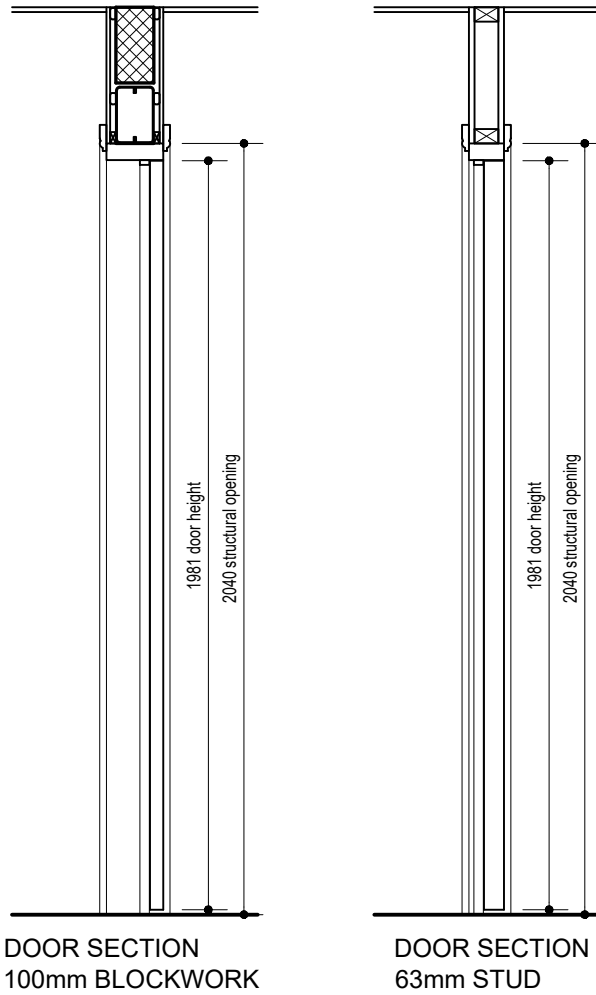
Issue: FEBRUARY 2019  
 Revision: .  
 Scale - 1:5



Project No. 1839

HERBERT ROAD, NEWPORT

# HOUSE TYPE DETAILS



## H-C1: INTERNAL DOOR SIZES

Issue: FEBRUARY 2019

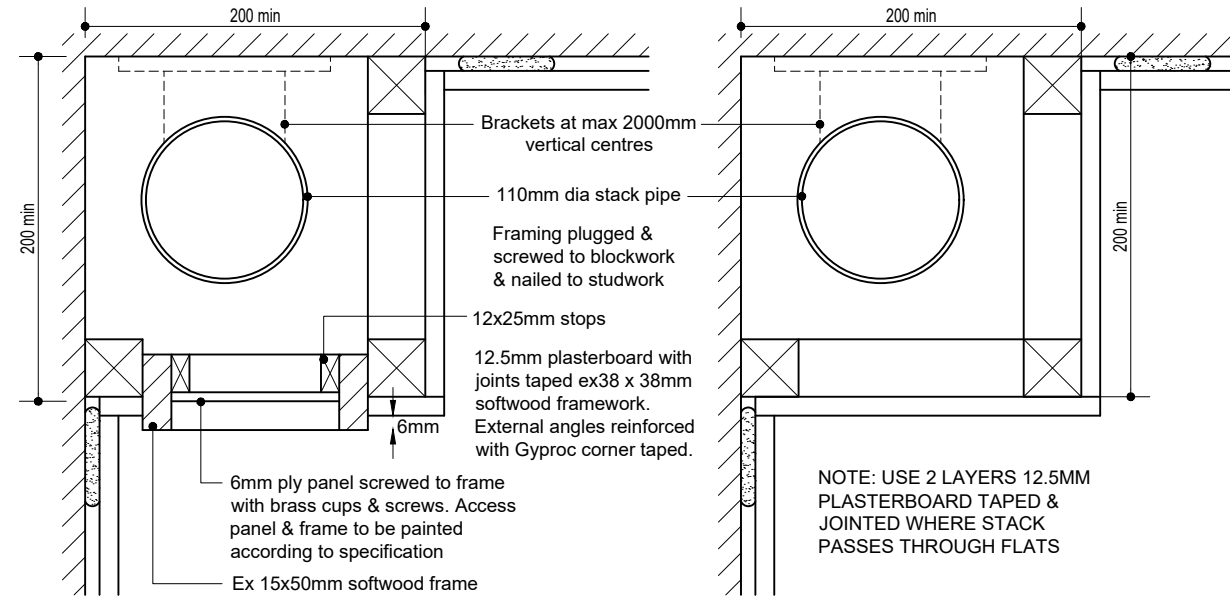
Revision: -

Scale - 1:20

Project No. 1839

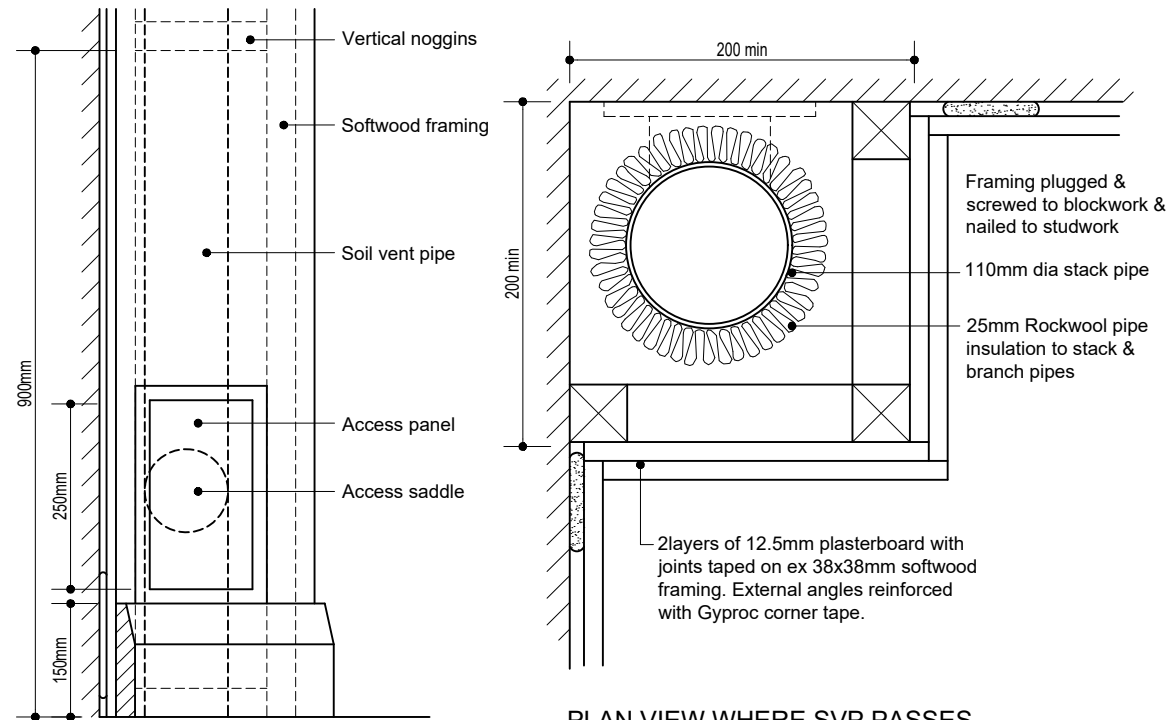
HERBERT ROAD, NEWPORT

# HOUSE TYPE DETAILS



ACCESS PANEL WHERE SPECIFIED

PLAN VIEW WHERE SVP PASSES THROUGH KITCHEN OR BATHROOM



TYPICAL ELEVATION

PLAN VIEW WHERE SVP PASSES THROUGH LIVING ROOM OR BEDROOM



**H-C2:** SVP BOXING

Issue: FEBRUARY 2019

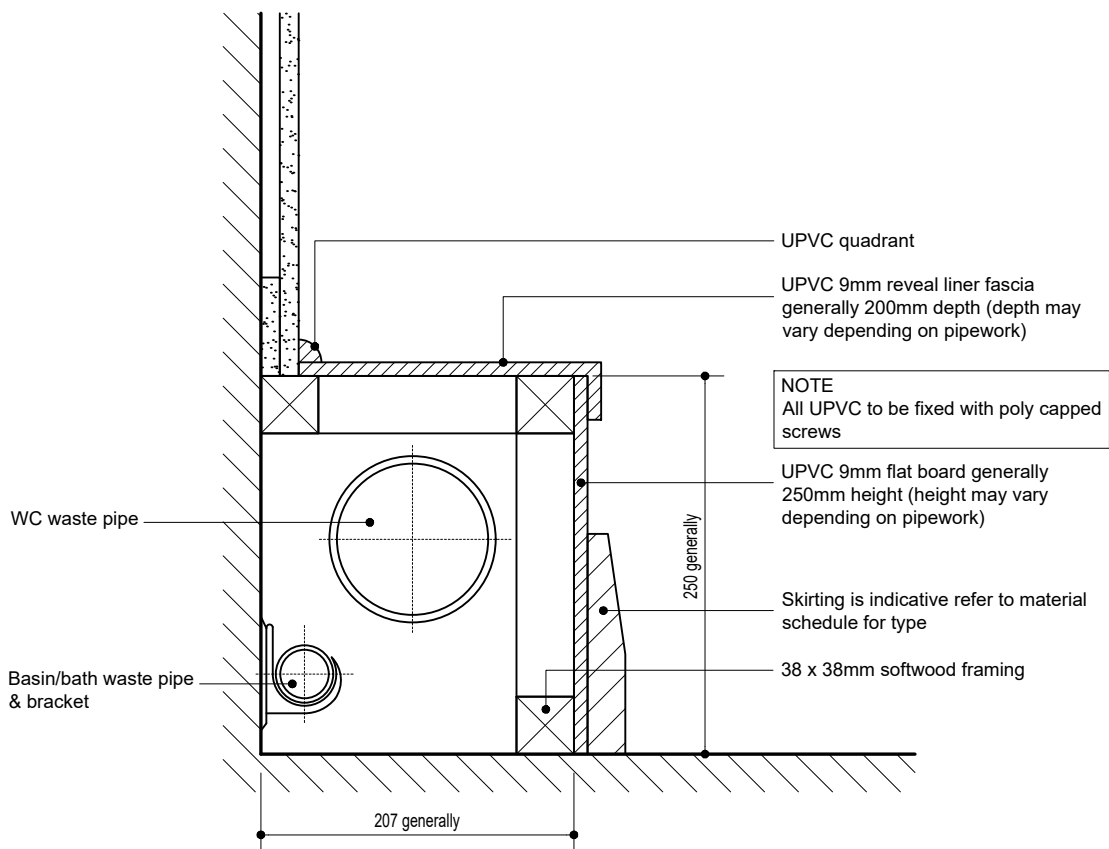
Revision: .

Scale - 1:5

Project No. 1839

HERBERT ROAD, NEWPORT

# HOUSE TYPE DETAILS



## H-C3: LOW LEVEL BOXING

Issue: FEBRUARY 2019

Revision: .

Scale - 1:5

# HOUSE TYPE DETAILS



DRAWING TO BE READ IN CONJUNCTION WITH APPROVED DOCUMENT N1 (WALES ) AND K4 (ENGLAND)

**SAFETY GLAZING**

Safety glazing to be provided to critical locations which can:  
 - if broken on impact, break so that the dangers of injury are minimised (i.e. break safely)  
 - resist impact without breaking  
 - be protected or shielded from impact

**CRITICAL LOCATION**

Locations considered critical in terms of safety are;  
 a) between finished floor level and 800mm above that level in internal, external walls and partitions  
 b) between finished floor level and 1500mm above the level in a door or side panel, within 300mm of either edge of the door.

**POSSIBLE SOLUTIONS**

Safety Breakage  
 From BS 6206: 1981- *Specification for impact performance requirements for flat safety glass and safety plastics for use in*

*buildings* - Clause 5.3, based on an impact test carried out resulting with the test material to remain unbroken or limited to one of the following:  
 a) a small clear opening, with limited size of detached particles; or  
 b) disintegration, providing the detached particles are of small size; or  
 c) breakage resulting in small particles which are not sharp or pointed.

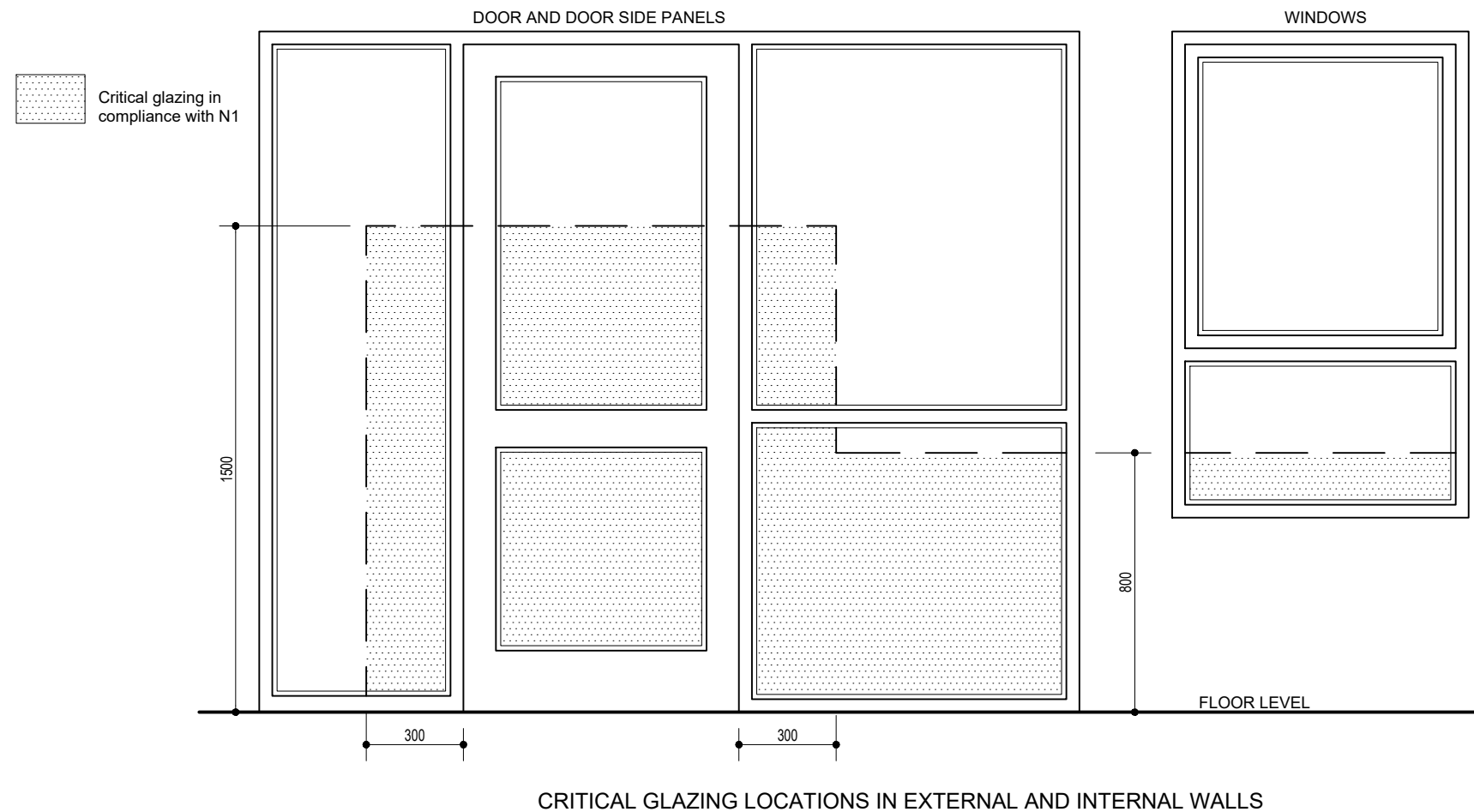
For Safe Breakage, a glazing material suitable for installation in a Critical Location would satisfy the Requirements of Class C of BS 6206 or, if it is installed in a door or in a door side panel and has a pane width exceeding 900mm, the Requirements of Class B of BS 6206.

**Robust Glazing**

Robustness relates to the strength of the glazing material. Annealed glass, gains strength through thickness; others such as polycarbonates or glass blocks are inherently strong. Refer to Wales AD N1 Dia 2 or England AD K4 Dia 5.2 for dimensions of glazed areas and required thickness, in annealed glass for use in large areas to shop fronts, showrooms, offices, factories and public buildings.

**Small panes**

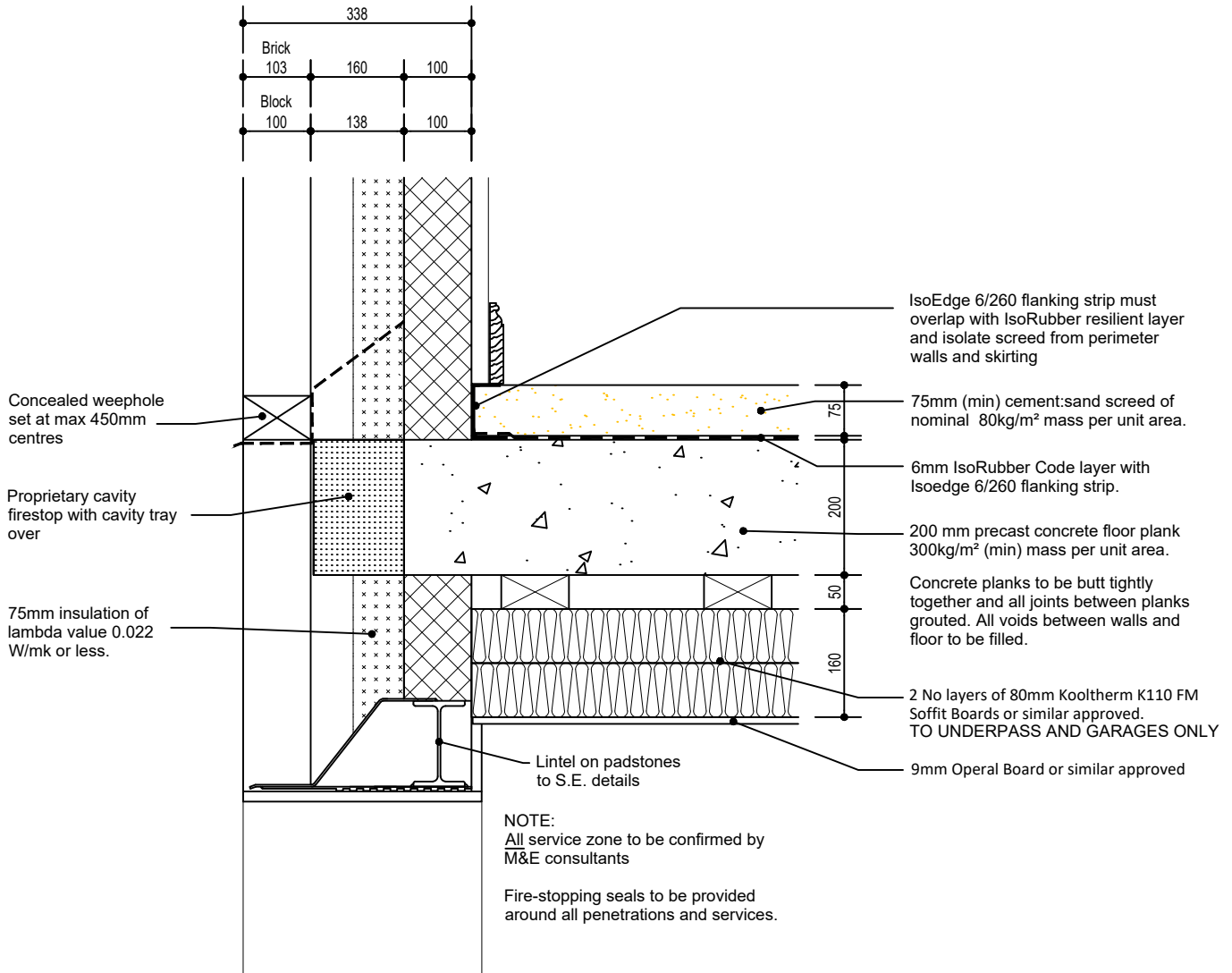
- Maximum area for a single pane in 0.5m<sup>2</sup>.
- Small panes of annealed glass to be not less than 6mm thick.
- Small panes should have a max width of 250mm



Project No. 1839

HERBERT ROAD, NEWPORT

# HOUSE TYPE DETAILS



## H-F1: FLAT OVER GARAGE - FLOOR / EXTERNAL WALL

Issue: FEBRUARY 2019

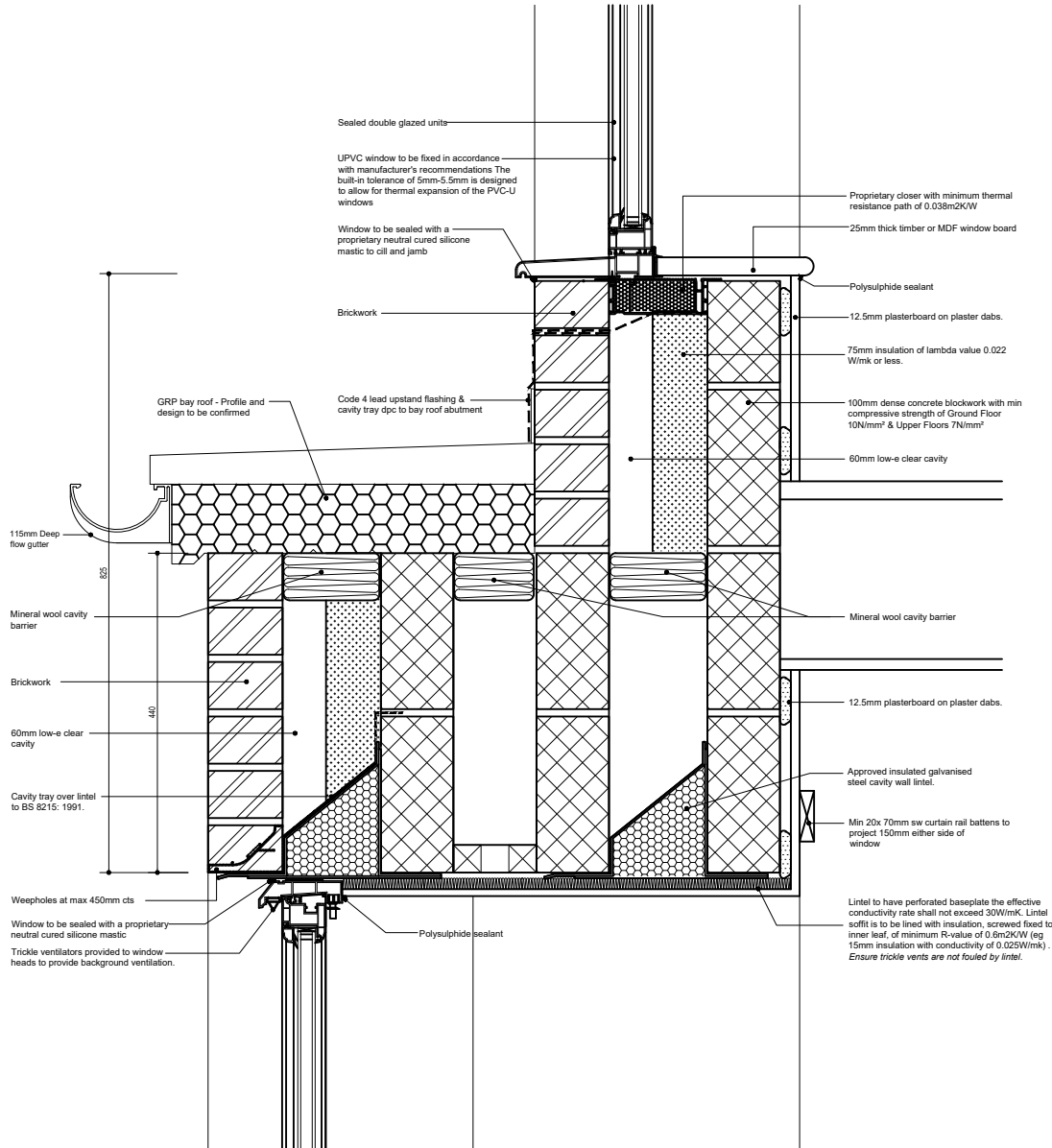
Revision: .

Scale - 1:10

Project No. 1839

HERBERT ROAD, NEWPORT

# HOUSE TYPE DETAILS



**H-F2: ROOF OVER PROJECTING BAY**

Issue: FEBRUARY 2019

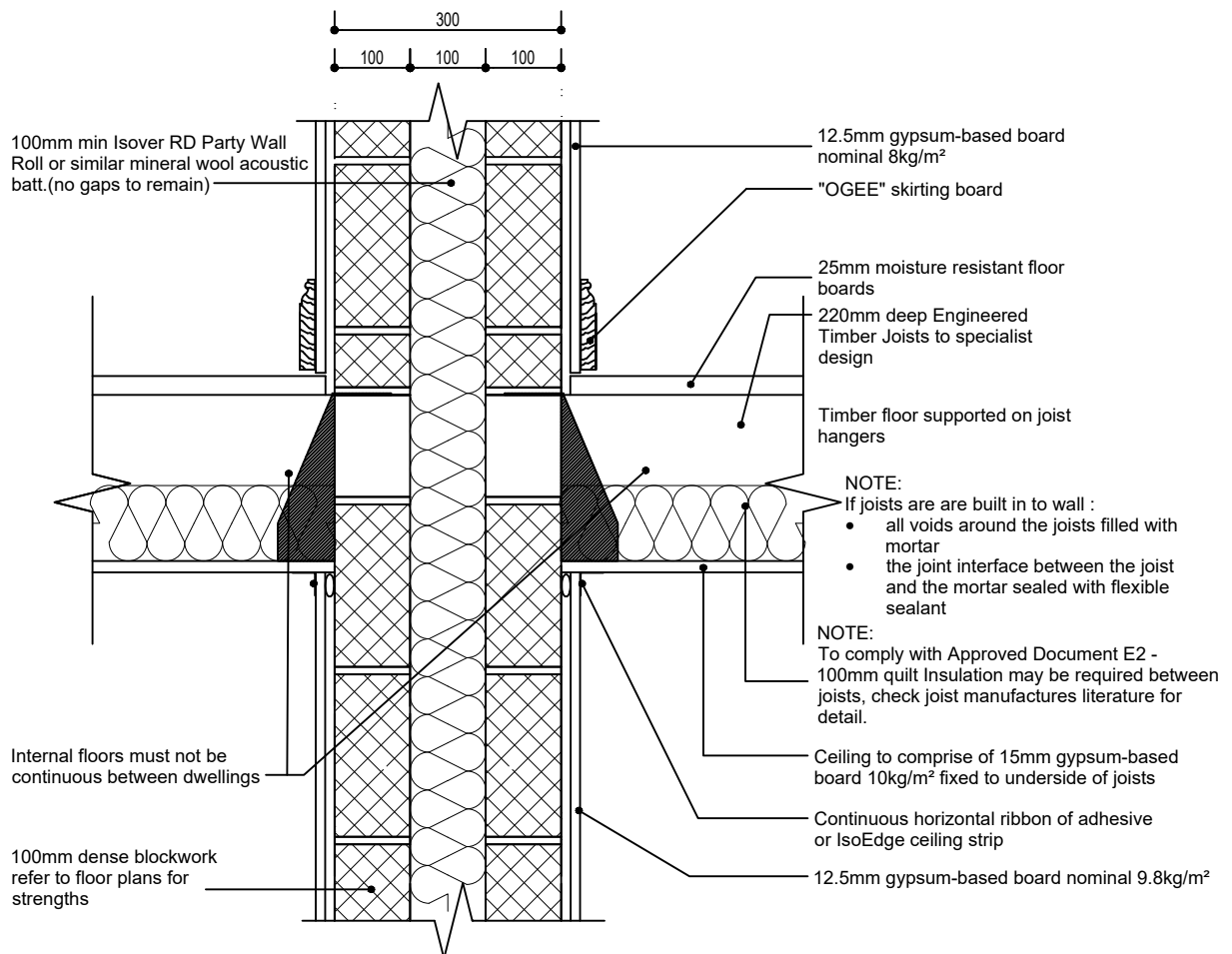
Revision: .

Scale - 1:10

Project No. 1839

HERBERT ROAD, NEWPORT

# HOUSE TYPE DETAILS



## H-F3:

### INTERNAL FLOOR JUNCTION WITH SEPARATING WALL

Issue: FEBRUARY 2019

Revision: .

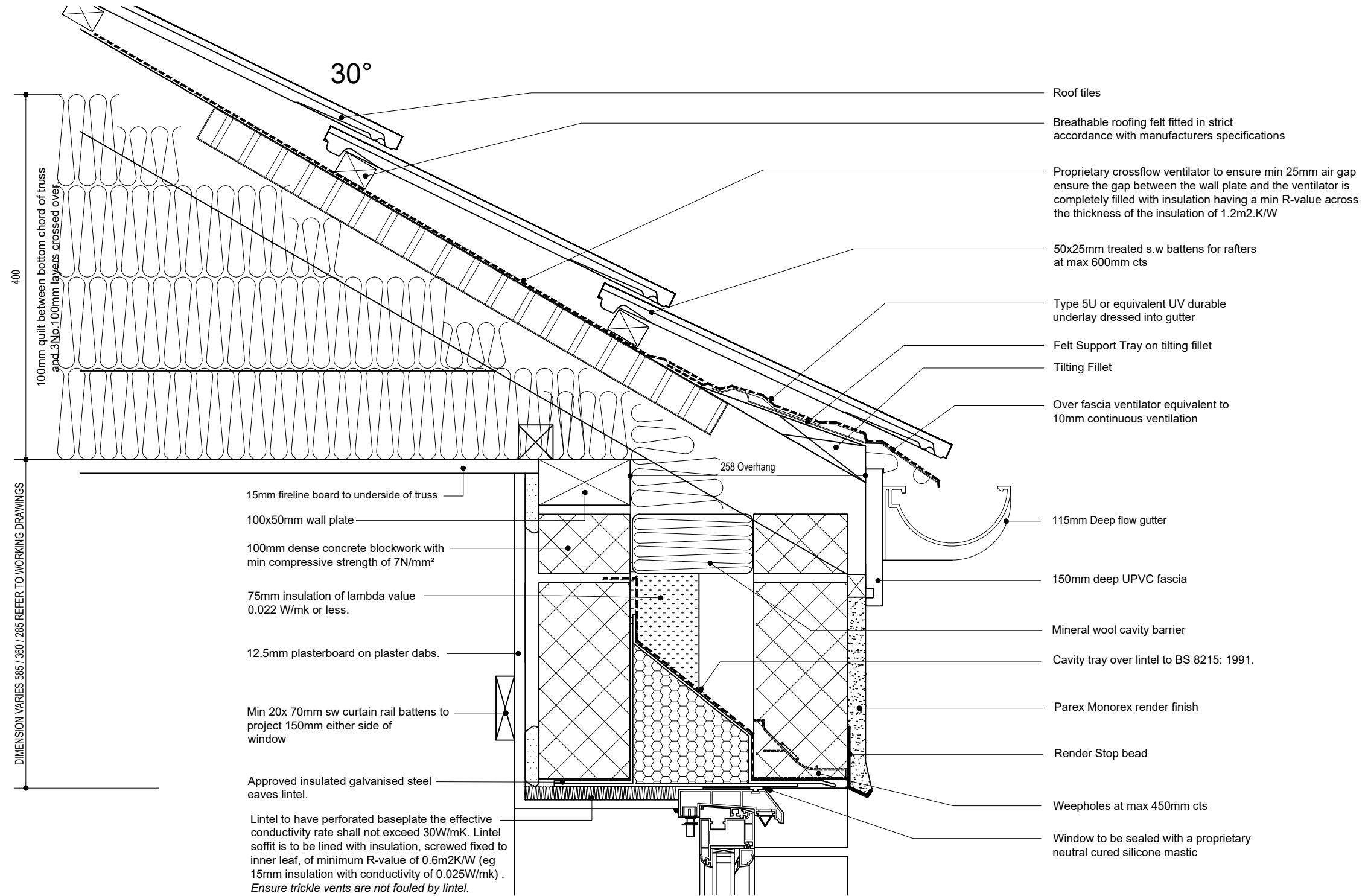
Scale - 1:10



Project No. 1839

HERBERT ROAD, NEWPORT

# HOUSE TYPE DETAILS



## H-R1-R: 30 DEG CLIPPED EAVES - RENDER

Issue: FEBRUARY 2019

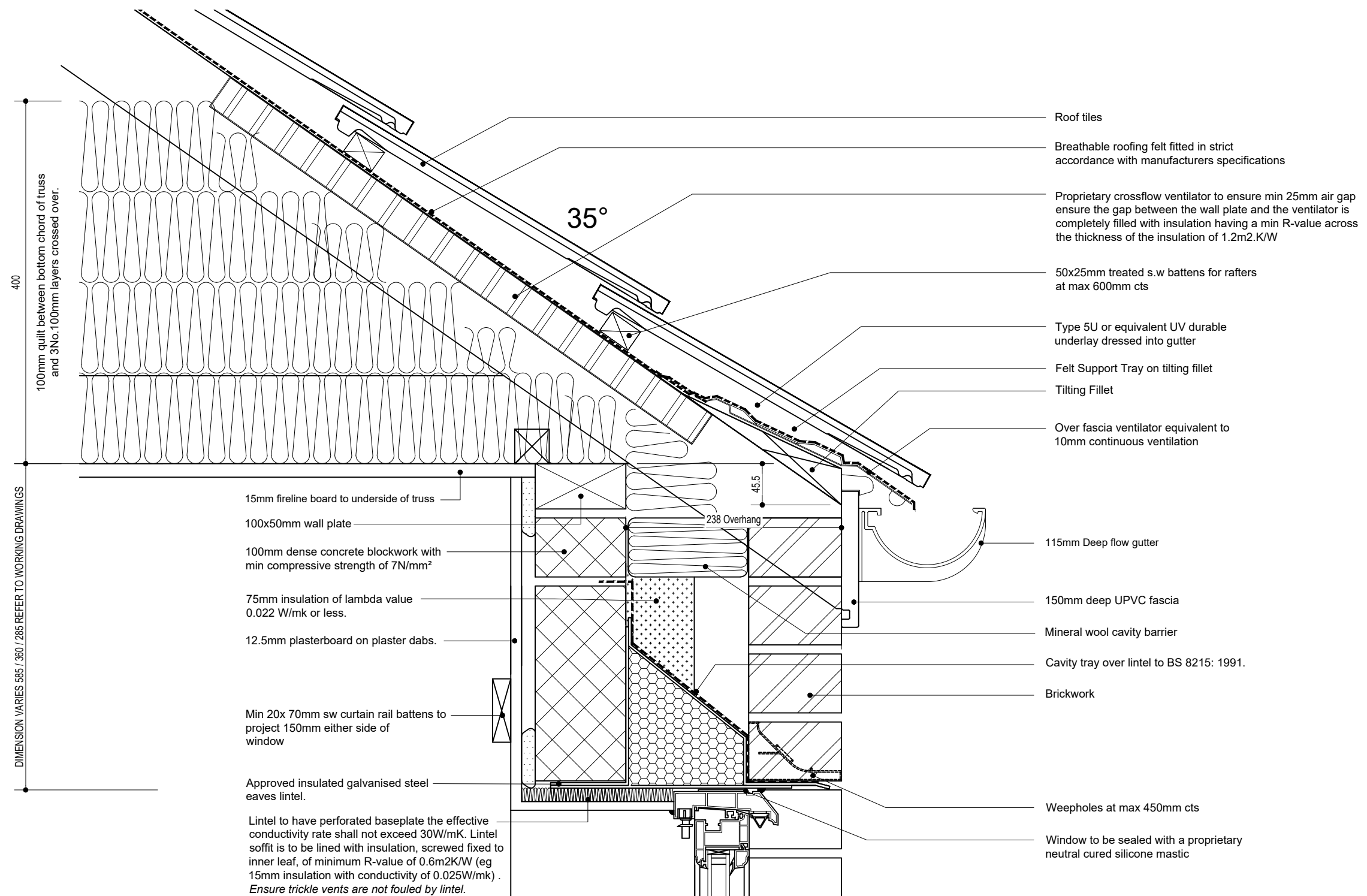
Revision: .

Scale - 1:5

Project No. 1839

HERBERT ROAD, NEWPORT

# HOUSE TYPE DETAILS



## H-R2-B: 35 DEG CLIPPED EAVES - BRICKWORK

Issue: FEBRUARY 2019

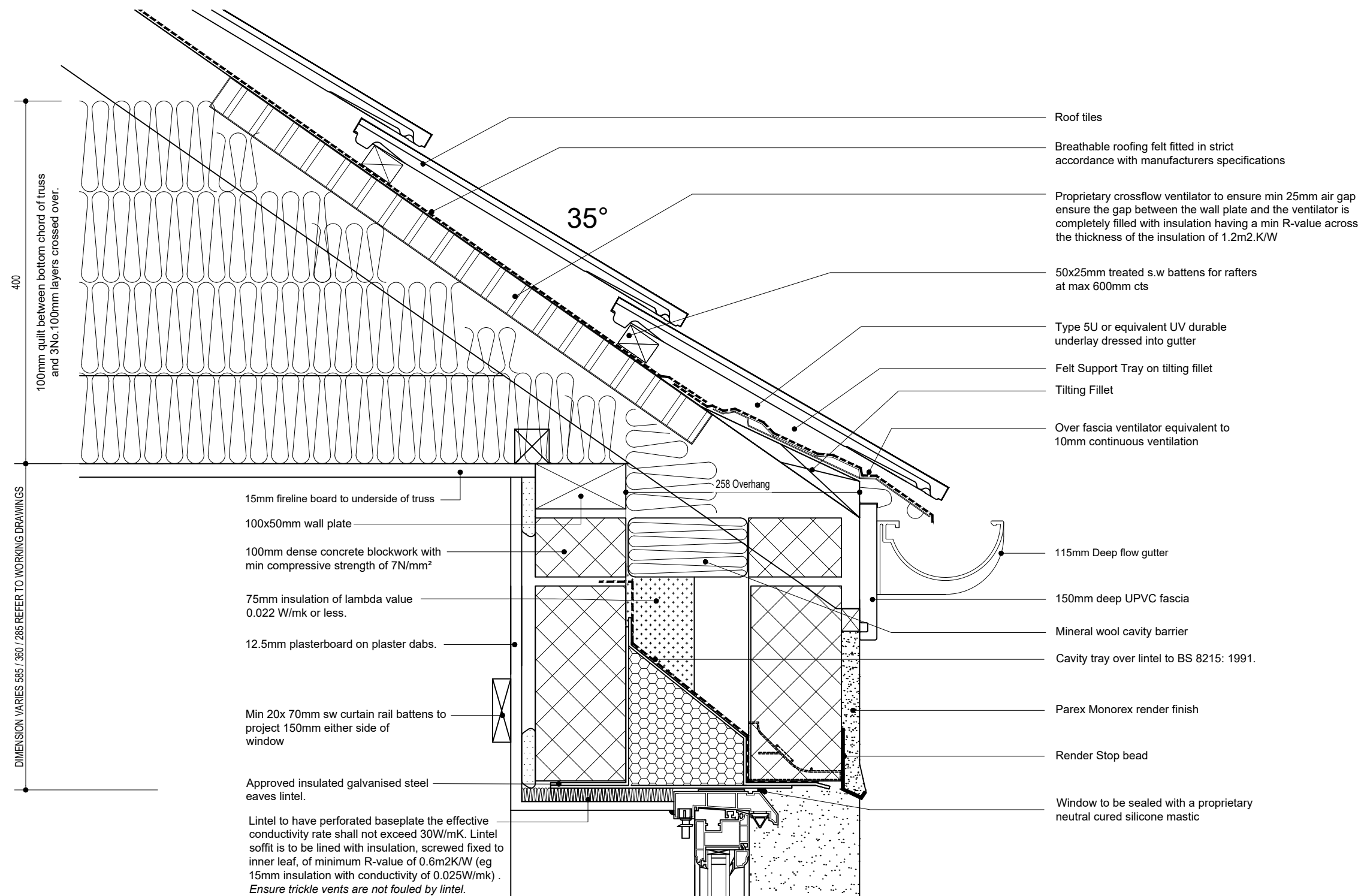
Revision: .

Scale - 1:5

Project No. 1839

HERBERT ROAD, NEWPORT

# HOUSE TYPE DETAILS



## H-R2-R: 35 DEG CLIPPED EAVES - RENDER

Issue: FEBRUARY 2019

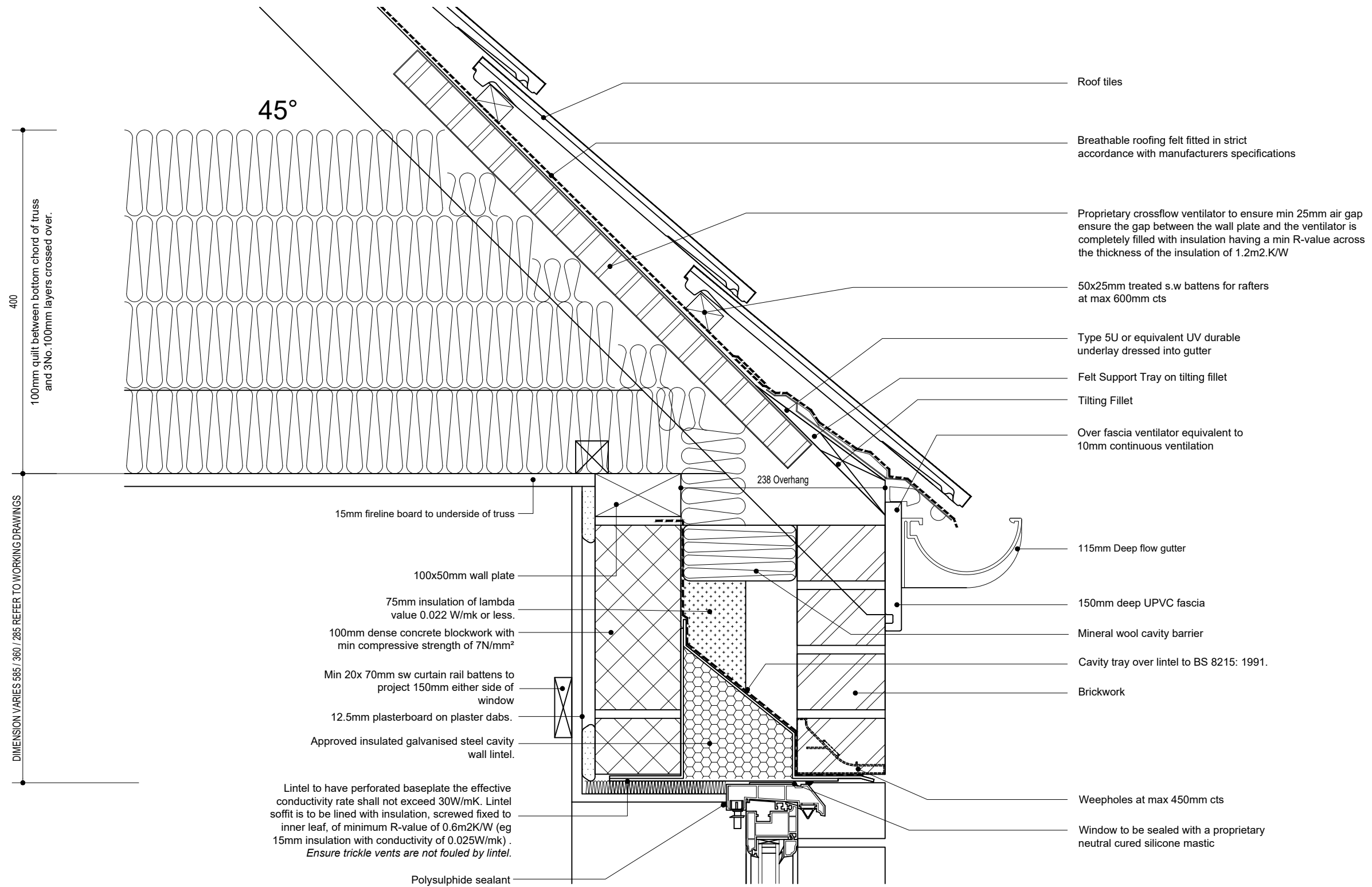
Revision: .

Scale - 1:5

Project No. 1839

HERBERT ROAD, NEWPORT

# HOUSE TYPE DETAILS



## H-R3-B: 45 DEG CLIPPED EAVES AT HEAD - BRICKWORK

Issue: FEBRUARY 2019

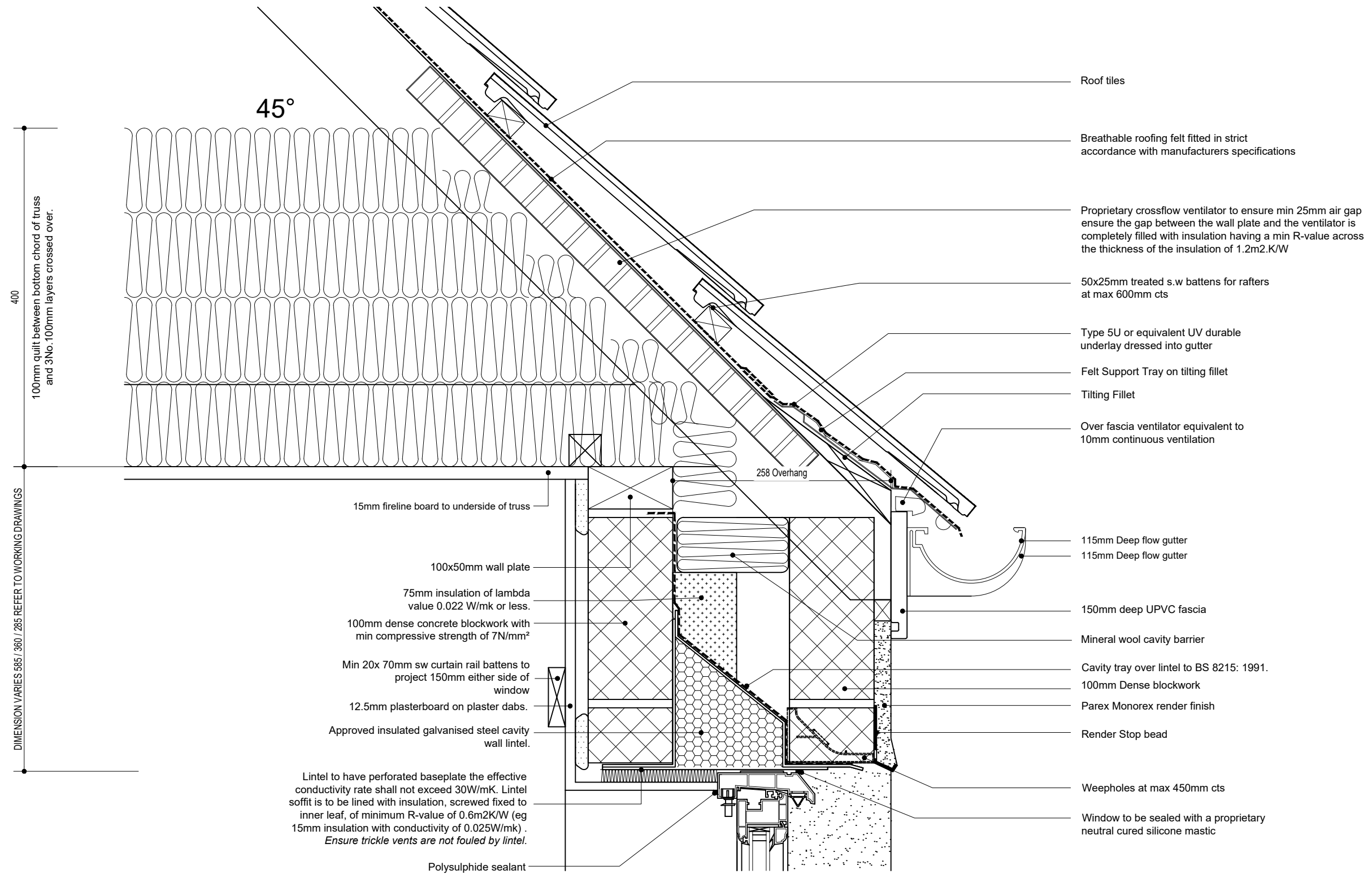
Revision: .

Scale - 1:5

Project No. 1839

HERBERT ROAD, NEWPORT

# HOUSE TYPE DETAILS



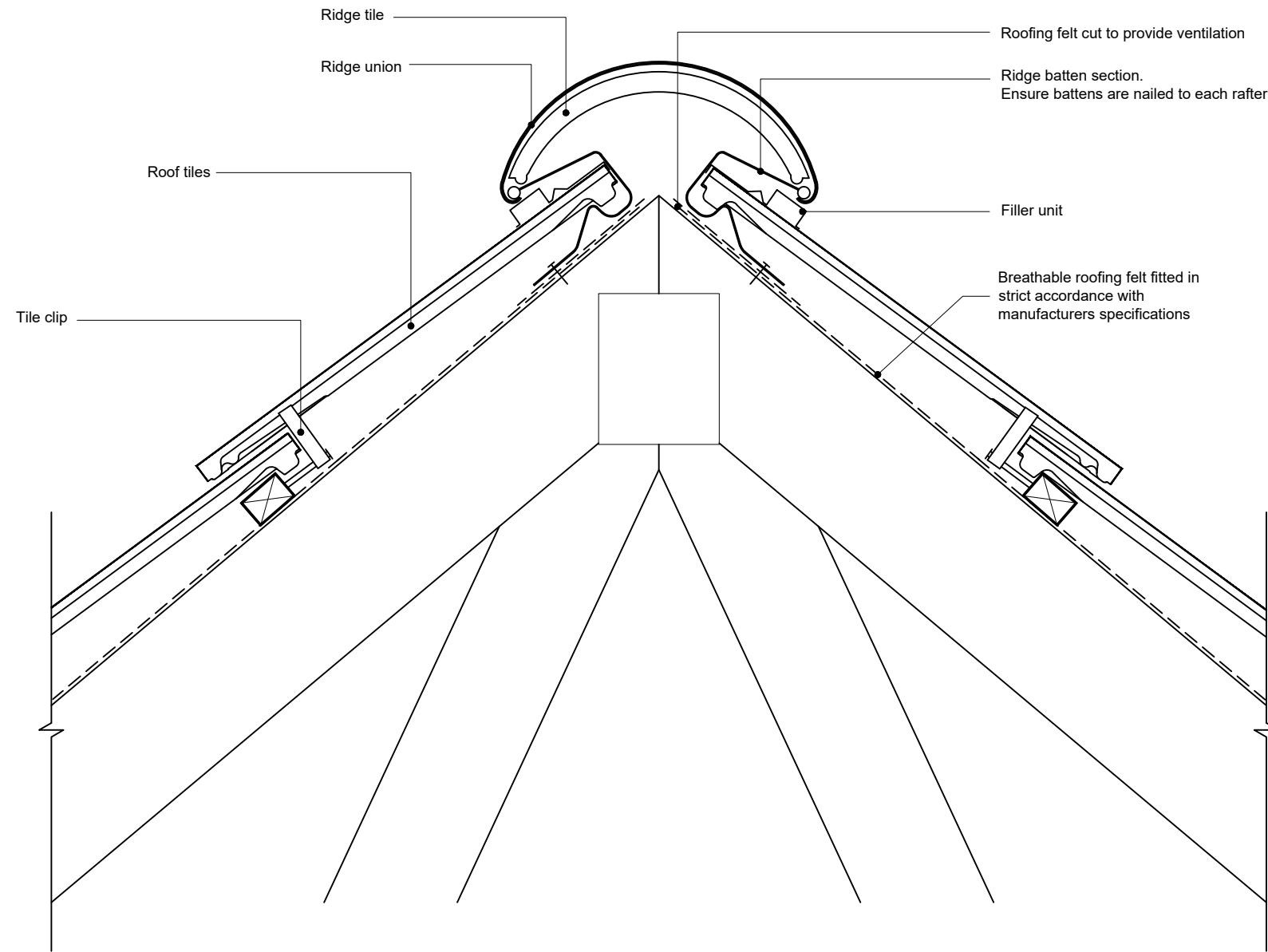
## H-R3-R: 45 DEG CLIPPED EAVES AT HEAD - RENDER

Issue: FEBRUARY 2019

Revision: .

Scale - 1:5

Project No. 1839  
HERBERT ROAD, NEWPORT  
**HOUSE TYPE DETAILS**



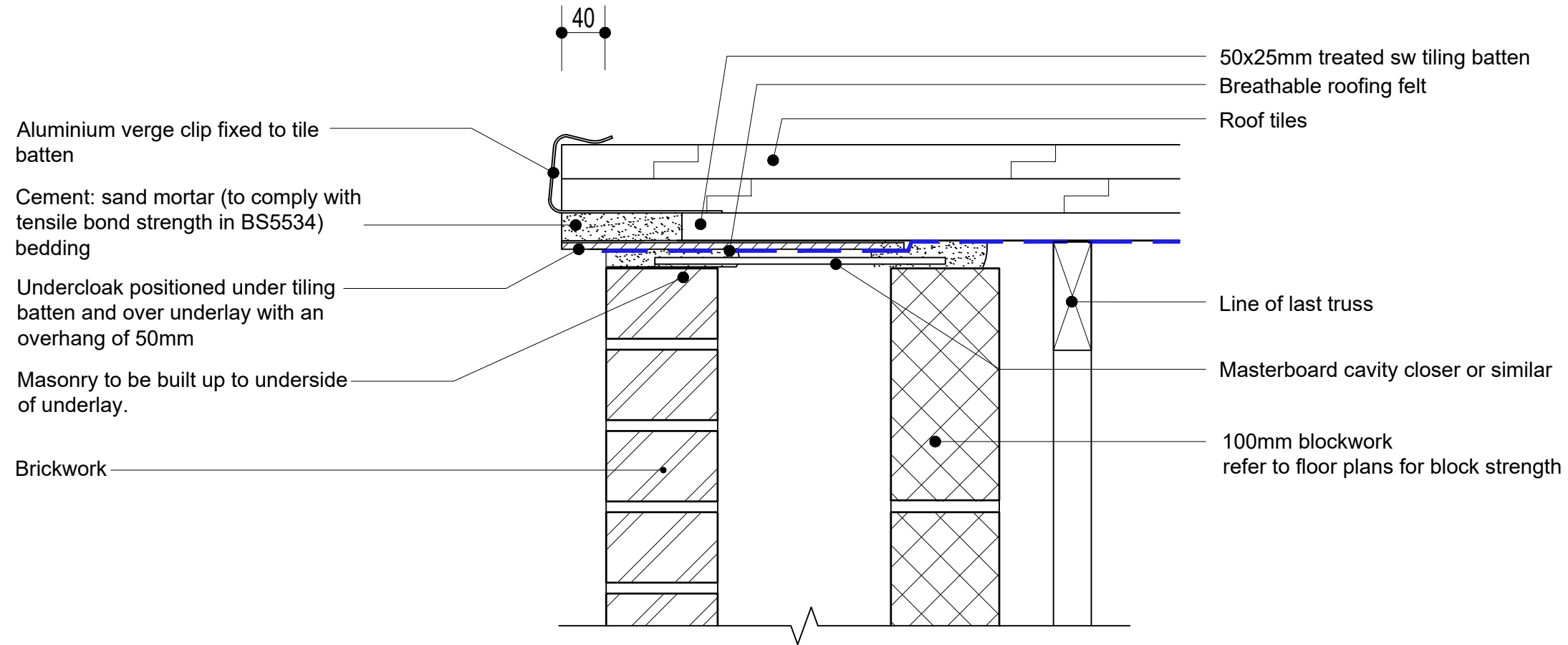
**H-R4: VENTILATED RIDGE**

Issue: FEBRUARY 2019  
Revision: .  
**Scale - 1:5**

Project No. 1839

HERBERT ROAD, NEWPORT

# HOUSE TYPE DETAILS



## MORTAR BEDDED VERGE

Ensure that gable wall is brought up level with top of rafters.

Carry underlay onto gable rafter and fix 6mm fibre cement undercloak of approved colour on top of underlay with 25 mm galvanised clout nails projecting 50mm beyond face of bargeboard.

Carry tiling battens over undercloak and finish on centre of gable rafter.

Fix tiles every course with verge clips.

Fix standard tiles, with interlock removed, and left hand half tiles to left hand verges.

Fix standard tiles and right hand half tiles to right hand verges. Use half tile pair.

Bed edge of verge tiles on 100mm wide bed of mortar ensuring that mortar is not displaced or cracked by mechanical fixing of tiles.



**H-R5-B:**

**WET VERGE - BRICKWORK**

Issue: FEBRUARY 2019

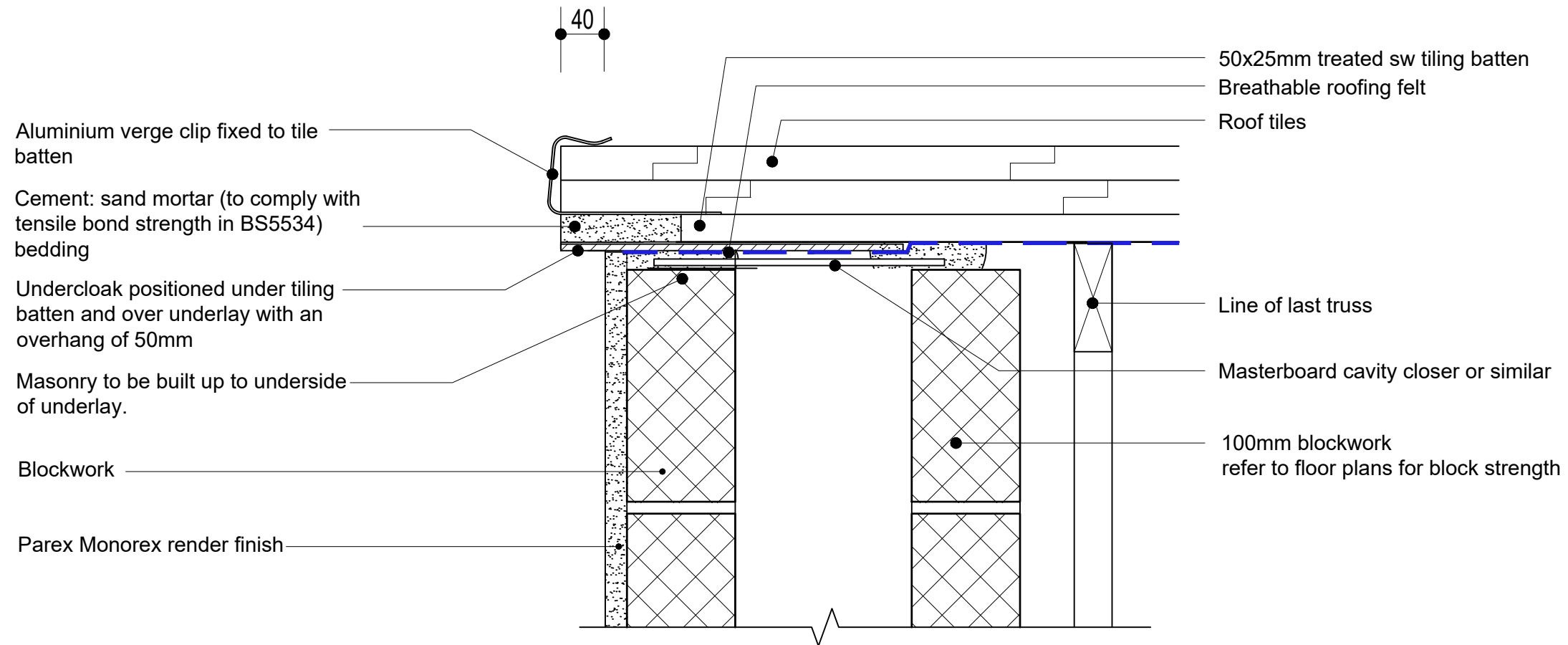
Revision: .

Scale - 1:5

Project No. 1839

HERBERT ROAD, NEWPORT

# HOUSE TYPE DETAILS



## MORTAR BEDDED VERGE

Ensure that gable wall is brought up level with top of rafters.

Carry underlay onto gable rafter and fix 6mm fibre cement undercloak of approved colour on top of underlay with 25 mm galvanised clout nails projecting 50mm beyond face of bargeboard.

Carry tiling battens over undercloak and finish on centre of gable rafter.

Fix tiles every course with verge clips.

Fix standard tiles, with interlock removed, and left hand half tiles to left hand verges.

Fix standard tiles and right hand half tiles to right hand verges. Use half tile pair.

Bed edge of verge tiles on 100mm wide bed of mortar ensuring that mortar is not displaced or cracked by mechanical fixing of tiles.



**H-R5-R: WET VERGE - RENDER**

Issue: FEBRUARY 2019

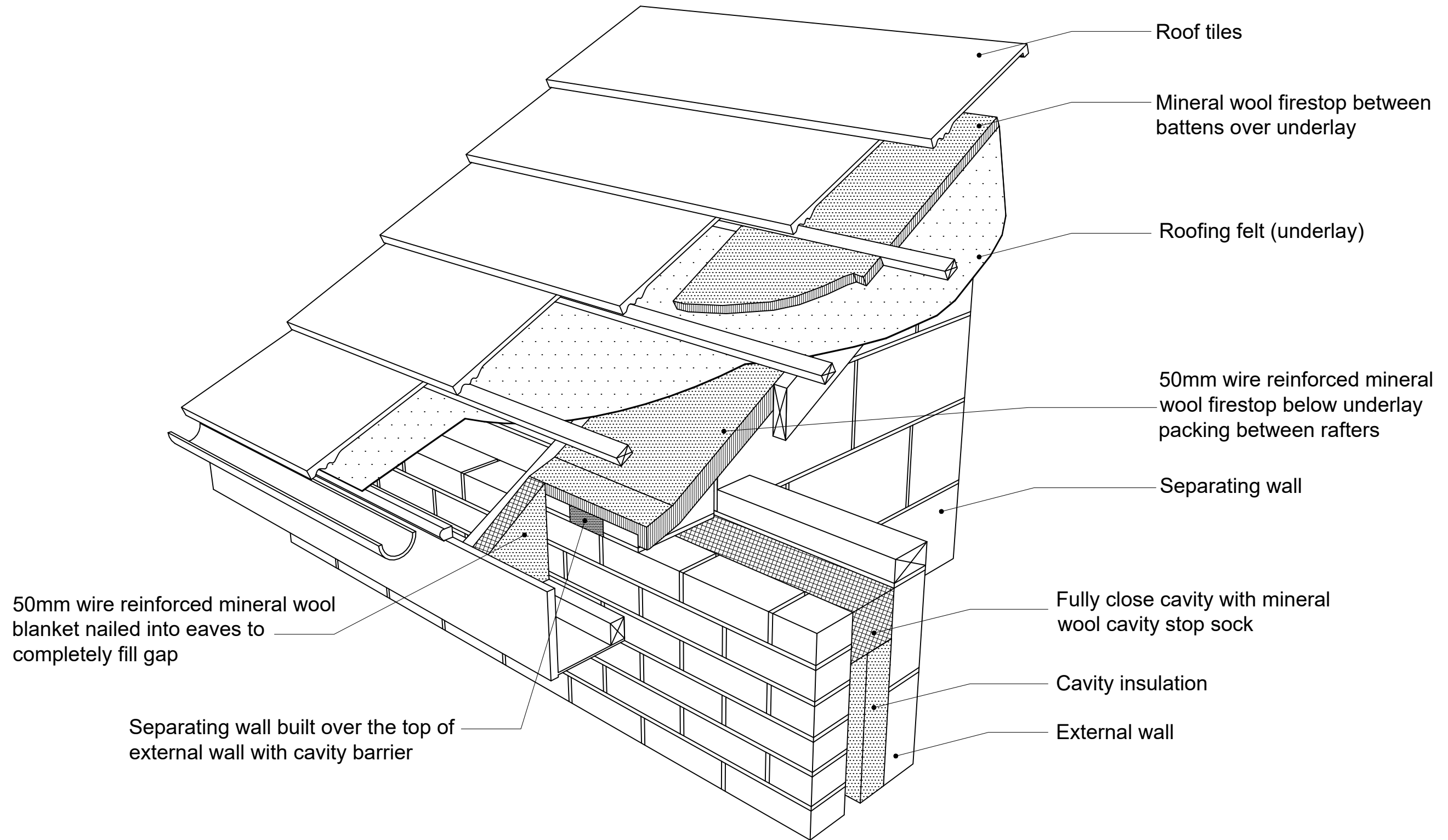
Revision: .

Scale - 1:5

Project No. 1839

HERBERT ROAD, NEWPORT

# HOUSE TYPE DETAILS



## H-R6: SEPARATING WALL AT EAVES

Issue: FEBRUARY 2019

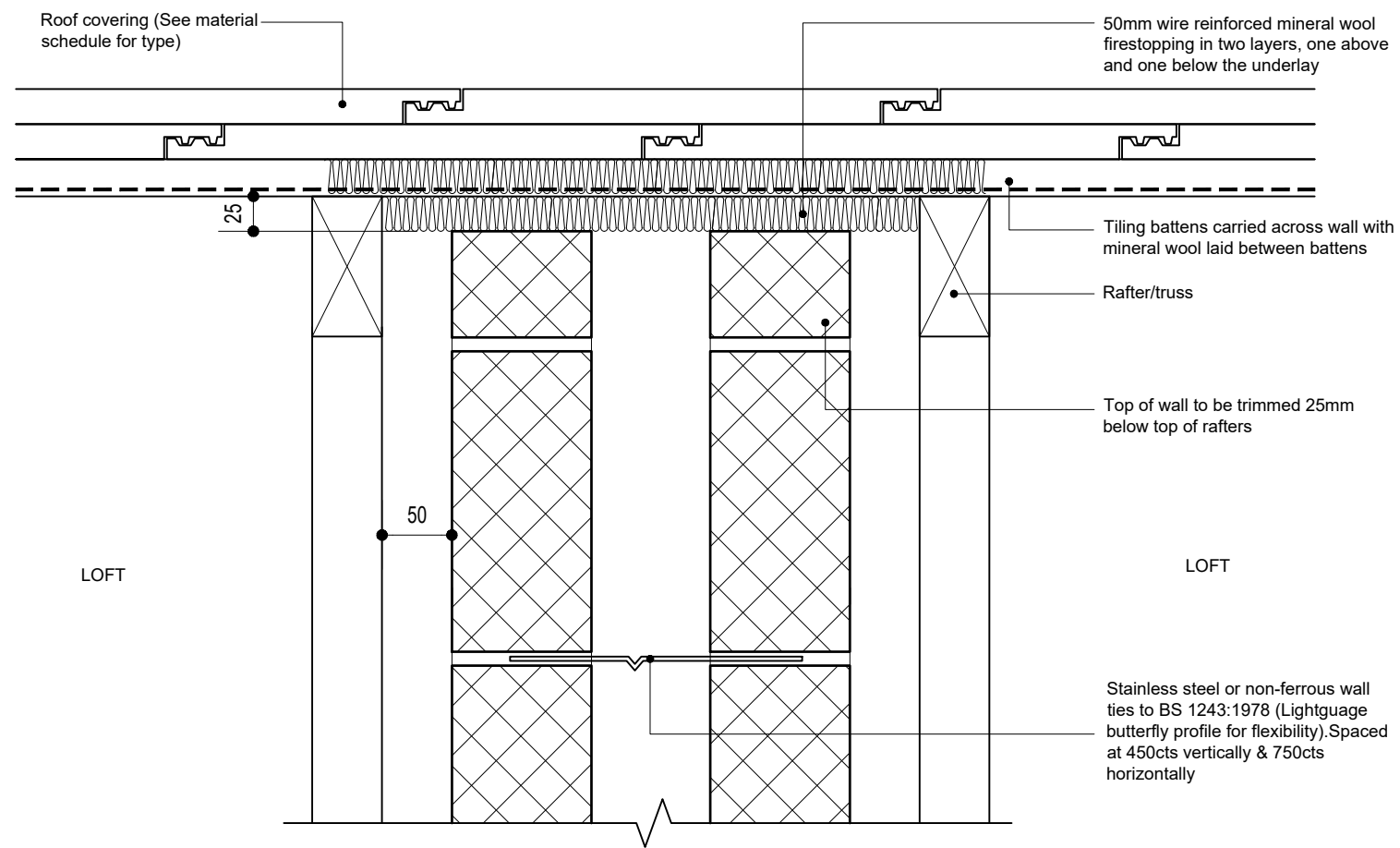
Revision: .

Scale - n/a

Project No. 1839

HERBERT ROAD, NEWPORT

# HOUSE TYPE DETAILS



## H-R7: SEPARATING WALL AT ROOF

Issue: FEBRUARY 2019

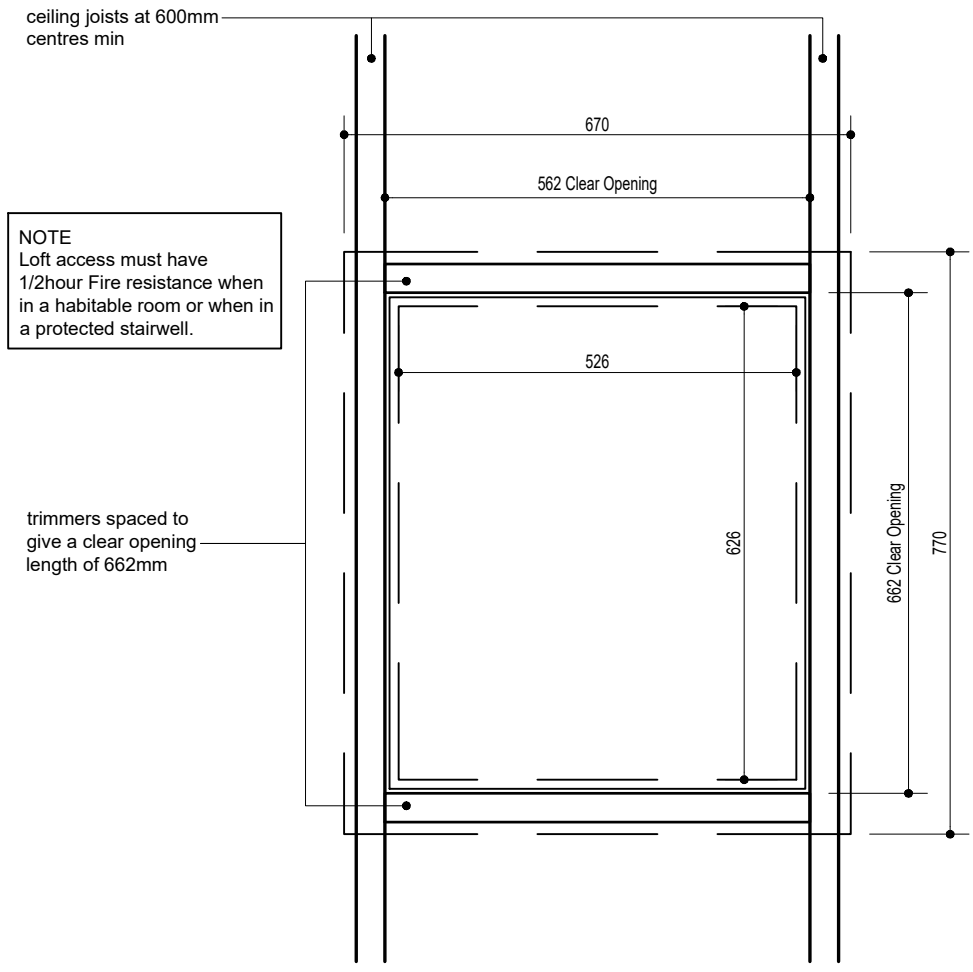
Revision: .

Scale - 1:5

Project No. 1839

HERBERT ROAD, NEWPORT

# HOUSE TYPE DETAILS



PROPRIETARY INSULATED ACCESS DOOR RECOMMENDED FOR THE ABOVE FRAME DIMENSIONS. REFER TO MANUFACTURER'S DETAILS FOR INSTALLATION AND FIXING DETAILS.



## H-R8: LOFT ACCESS

Issue: FEBRUARY 2019

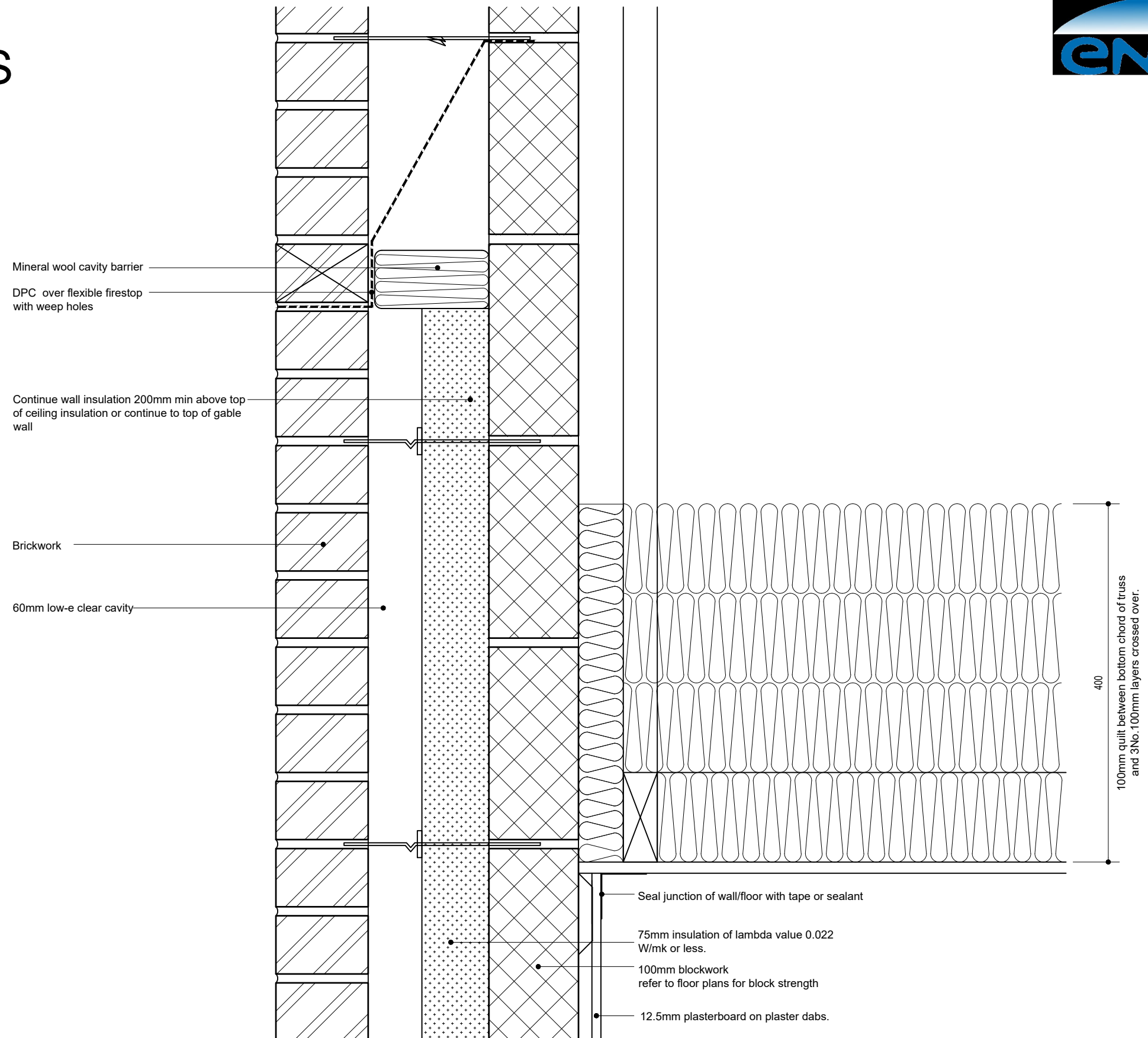
Revision: .

Scale - 1:10

Project No. 1839

HERBERT ROAD, NEWPORT

# HOUSE TYPE DETAILS



## H-R9: PITCHED ROOF VENTILATED LOFT

Issue: FEBRUARY 2019

Revision: .

Scale - 1:5