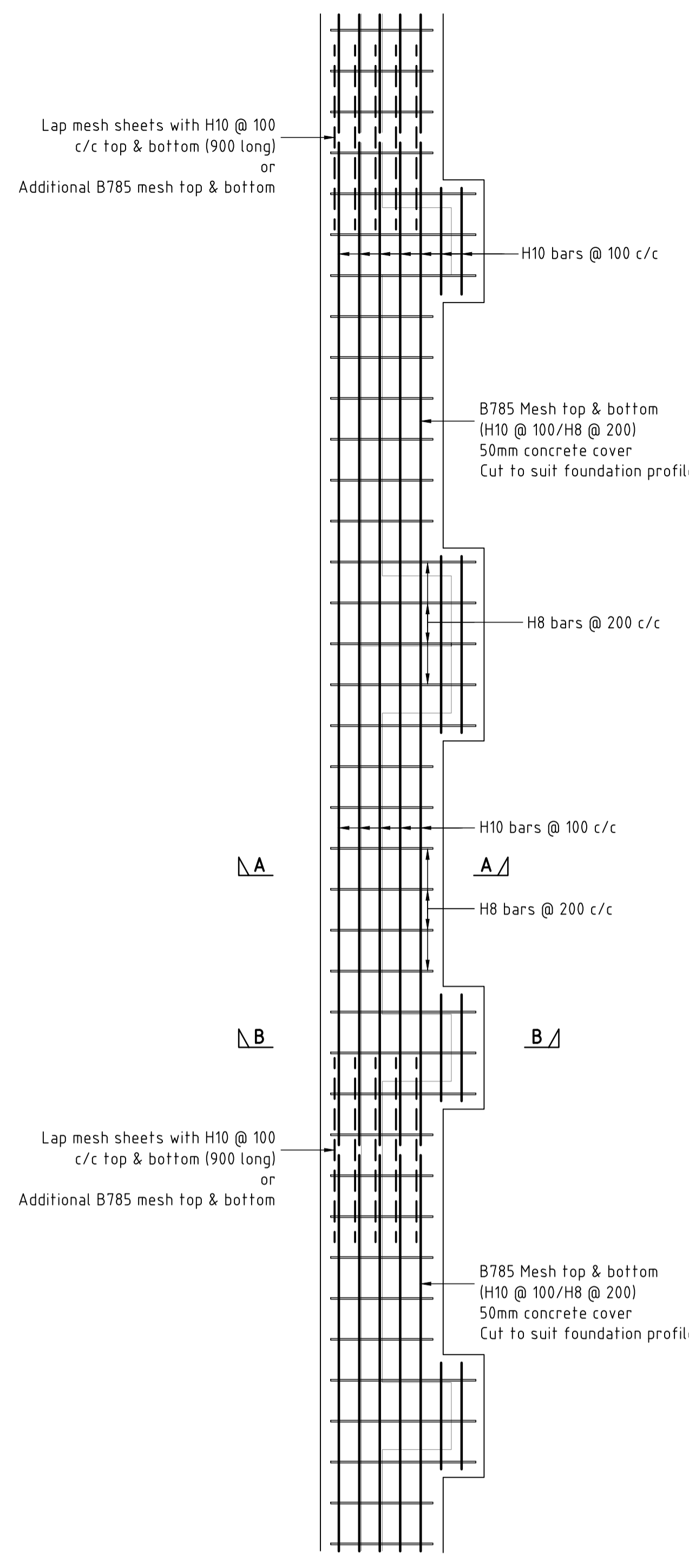
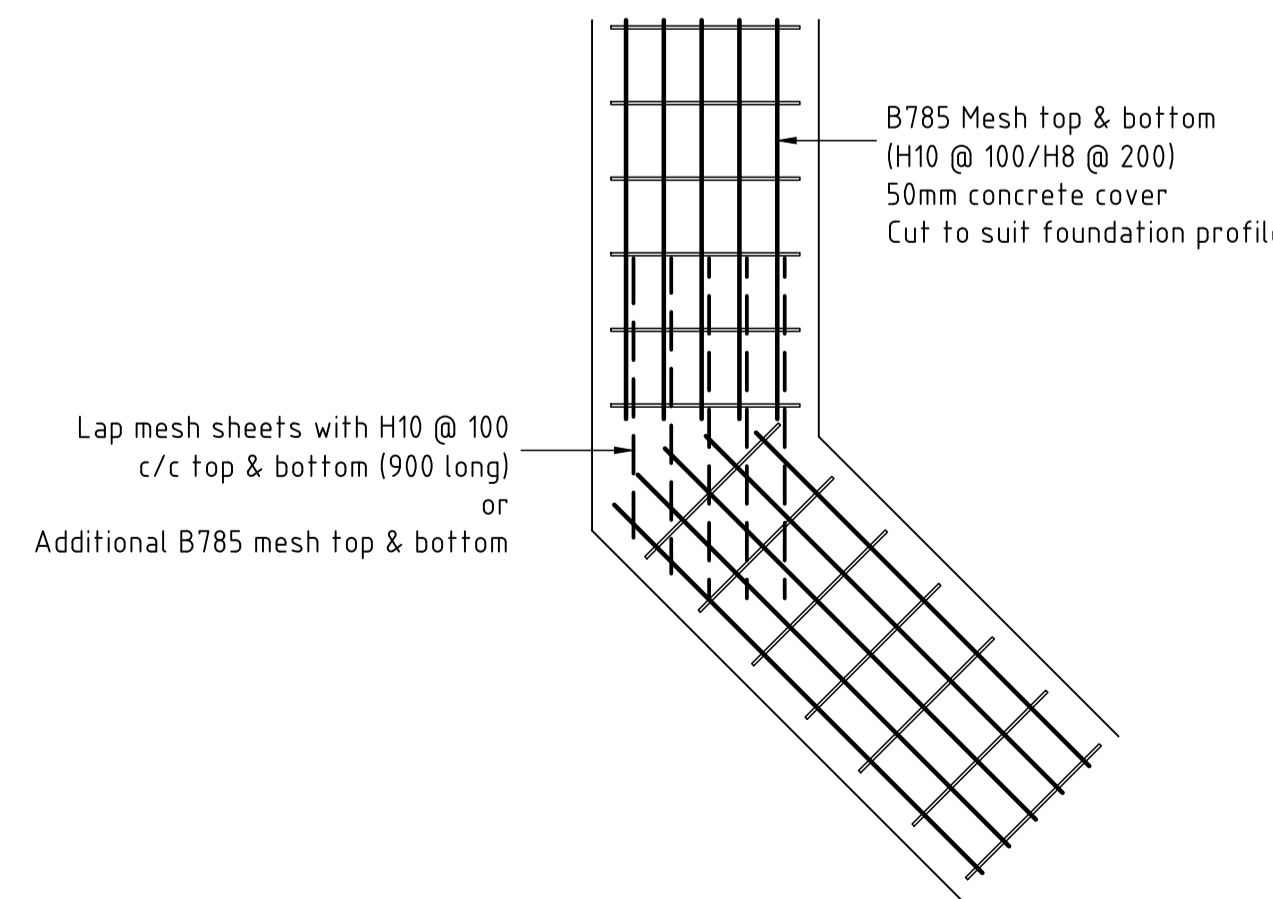


- Note:**
- Foundation/Wall: Suitable for non-retaining walls up to 1800mm Max. height.
 - Any soft spots to be removed & replaced with compacted sub-base or lean mix concrete.
 - Foundation design is based on a Min. 50 kN / m² bearing pressure into suitable bearing strata.
 - Foundations to penetrate minimum 200mm into bearing strata.
 - Underside of foundation to be min. 450mm below finished ground level for frost heave protection (or as advised by NHBC).
 - Mortar: Use mortar class (iii) Cement:Lime:Sand 1:1:5 to 6.
 - Movement joints: To be provided at Max. 9m centres (Approx. every 5th bay Max. if using pier construction). Joint to be for the full height of the wall (not foundations).
 - Wall coping: function of copings and capping's is aesthetic as well as protective. The protective function is against vertical water penetration and in shedding rainwater clear of the face as effectively as possible. The ideal coping should be durable, waterproof, weather the brickwork and constructed preferably with interlocking units. The overhang should include a throating recess or a drip not less than 13 mm wide, with the outer drip edge at least 40 mm from the face of the brickwork. A minimum weight of 15 kN / m² is preferred for copings with concrete or stone units. Some brick manufacturers can supply their own capping system which incorporates a dpc.

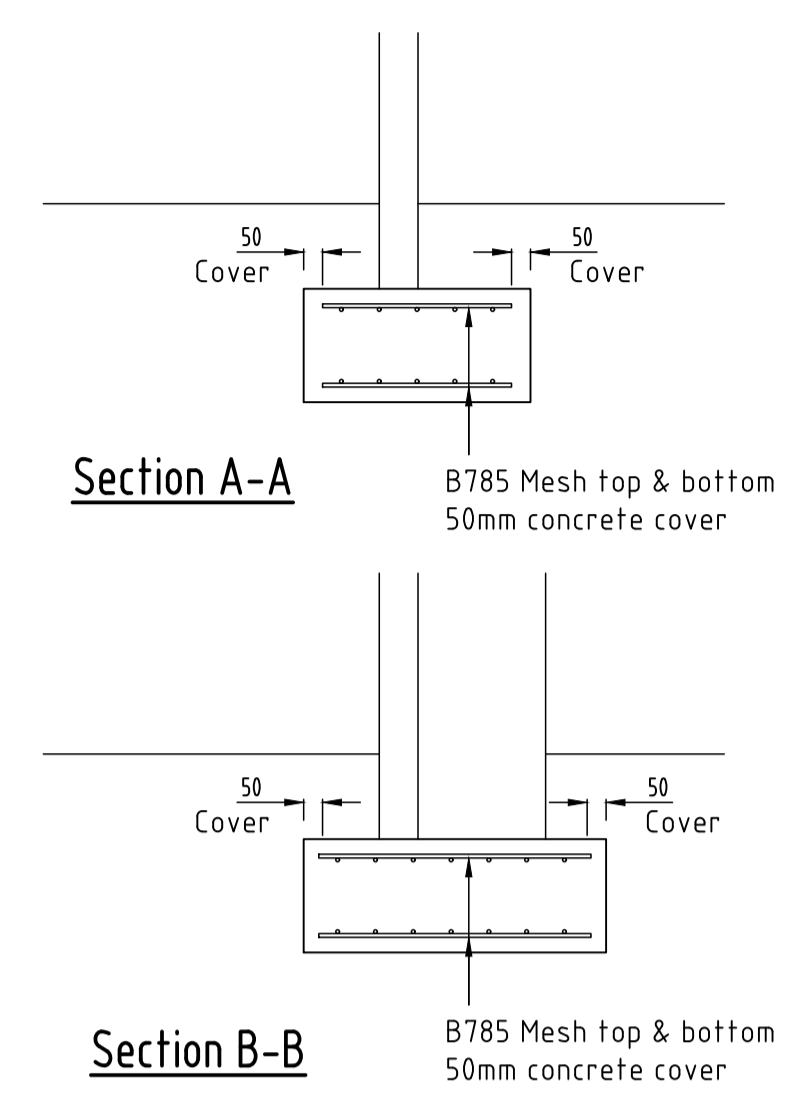
**Plan (102.5mm With piers 1 side)
Wall height up to 1800mm from FGL**



**Typical Foundation Plan
RC Details**



**Typical 45° Corner Foundation Plan
RC Details**



Section A-A

Section B-B

- Notes :-**
- General:
- Do not scale from this drawing, use figured dimensions only.
 - All dimensions are in millimetres, all levels are in metres.
 - This drawing to be read in conjunction with the latest Architects, Engineers & specialists drawings & specifications.
 - All soft spots to be removed & replaced with lean mix concrete as directed by the engineer.
 - All compaction to be carried out in accordance with the D.O.T specification.
- Foundations:
- Prior to excavation care must be taken to locate & clearly mark all existing services.
 - Prior to setting out of foundations all proposed setting out to be co-ordinated with Architects drawings & details.
 - Where applicable, foundations to be taken down to invert level of existing drainage.
 - Formations should never be left unprotected & continuously exposed to rain causing degradation, or left exposed/uncovered overnight, unless permitted by a qualified engineer.
 - Construction plant & other vehicular traffic should not be operated on unprotected formations.
 - All work to be undertaken & materials supplied in accordance with relevant British standards, codes of practice & building regulations.
 - Read this drawing in conjunction with the ground investigation report & the structural specification.
 - Formation level to be approved by the engineer/building control inspector.
- Masonry:
- Refer to Architects drawings for all masonry wall setting out.
 - Below DPC blockwork to be minimum 7N/mm², with type (ii) mortar to BS5628 Part 1. Above DPC blockwork to be minimum 7N/mm², mortar should revert to type (iii) mortar to BS5628 Part 1.
- Concrete:
- Mass concrete foundations to be Grade C16/20.
 - Blinding concrete to be Grade C8/10 (GEN 1).
 - The position of construction joints & pouring sequence to the engineers approval & agreed prior to construction.
 - Unless shown otherwise all surfaces to construction joints shall be scabbled back without disturbing coarse aggregate particles.

REV.	DATE	DETAILS	AMENDMENTS	BY	CHK

CLIENT:



phg CONSULTING ENGINEERS
PHG CONSULTING LTD
62A ALBANY ROAD
CARDIFF CF24 3RR

PROJECT:
**Engie
Herbert Road, Newport**

DRAWING TITLE:
**Freestanding Masonry Walls
1800mm High Max.**

DRAWN:	CHK:	STATUS:	SCALE:
DJT	WW	Construction	1:20 @ A1
DATE:	JOB NO.:	ENCL. NO.:	REV.:
12/03/19	1795	031	