









**Front Elevation**

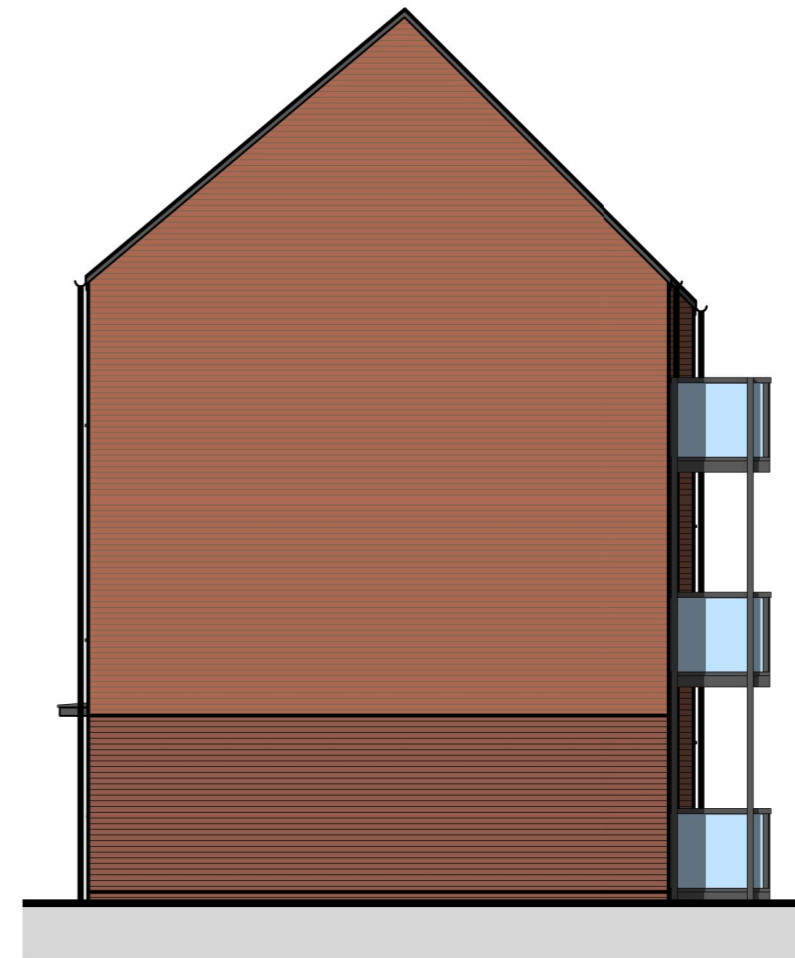
**Elevations - Type.2  
House Type 'K'**



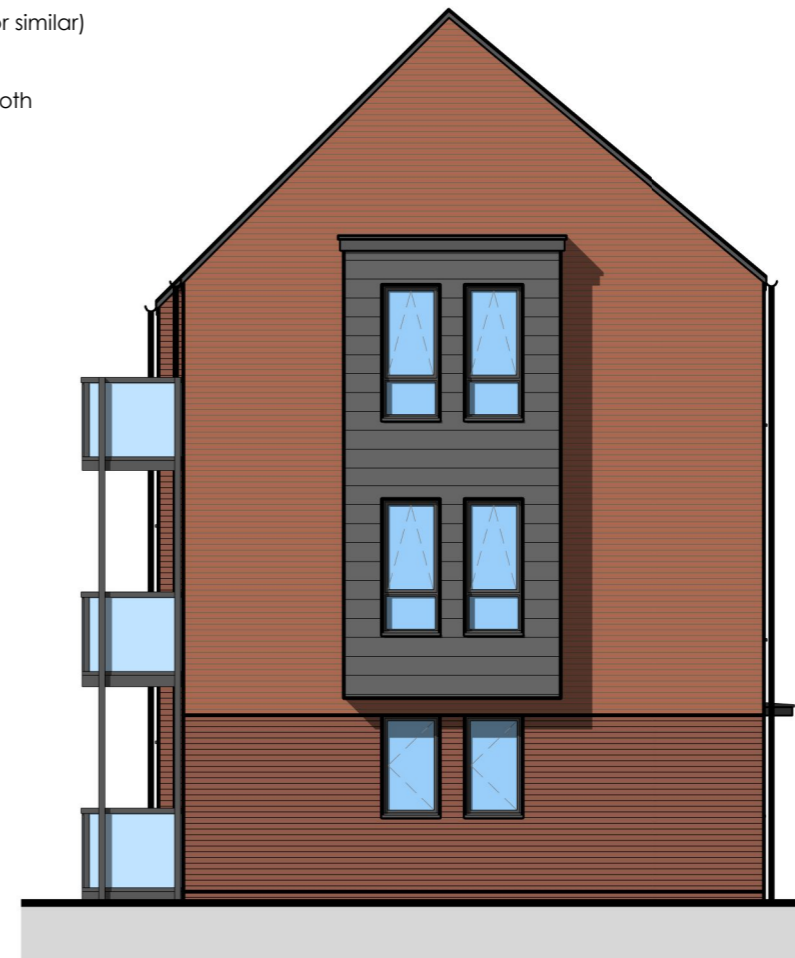
**Rear Elevation**

**Materials Schedule**

-  Concrete interlocking tiles  
(Russell 'Galloway' Anthracite or similar)
-  Clay facing bricks  
(Wieneberger 'Cranbrook Red' or similar)
-  Clay facing bricks  
(Wieneberger 'Staffordshire Smooth  
Crimson' or similar)
-  Cedral Click Wetherboard  
(Marley 'Slate Grey' or similar)
-  Grey, 7016 colour coated  
UPVC windows, doors & fascias
-  UPVC R.W goods - Black



**L.H.S Elevation**



**R.H.S Elevation**

Do not scale from this drawing.  
Refer to figured dimensions only.

The Contractors shall check all  
dimensions and report all errors and  
omissions to the Architect.

A Roofs, eaves and 13/03/18  
fascia revised.

| Rev | Description | Date | By |
|-----|-------------|------|----|
|-----|-------------|------|----|

Client  
**Pobl**

Project  
**Herbert Road**

Sheet name  
**House Type K -  
Elevations**

| Project No. | Drawing No.    | Revision |
|-------------|----------------|----------|
| <b>3073</b> | <b>(04)392</b> | <b>A</b> |

|                |              |
|----------------|--------------|
| Scale:         | Sheet size : |
| <b>1 : 100</b> | <b>A3</b>    |

|       |          |          |
|-------|----------|----------|
| Drawn | Director | Date     |
| WWM   | JM       | 20/12/17 |

| Project Status              | Stage     |
|-----------------------------|-----------|
| Preliminary: P Tender: T    | <b>PL</b> |
| Planning: PL Constructio: C |           |



Tregleath House, 1  
Serpentine Road, Newport,  
South Wales, NP20 4PF  
Tel: 01633 254711  
www.eosarchitects.co.uk