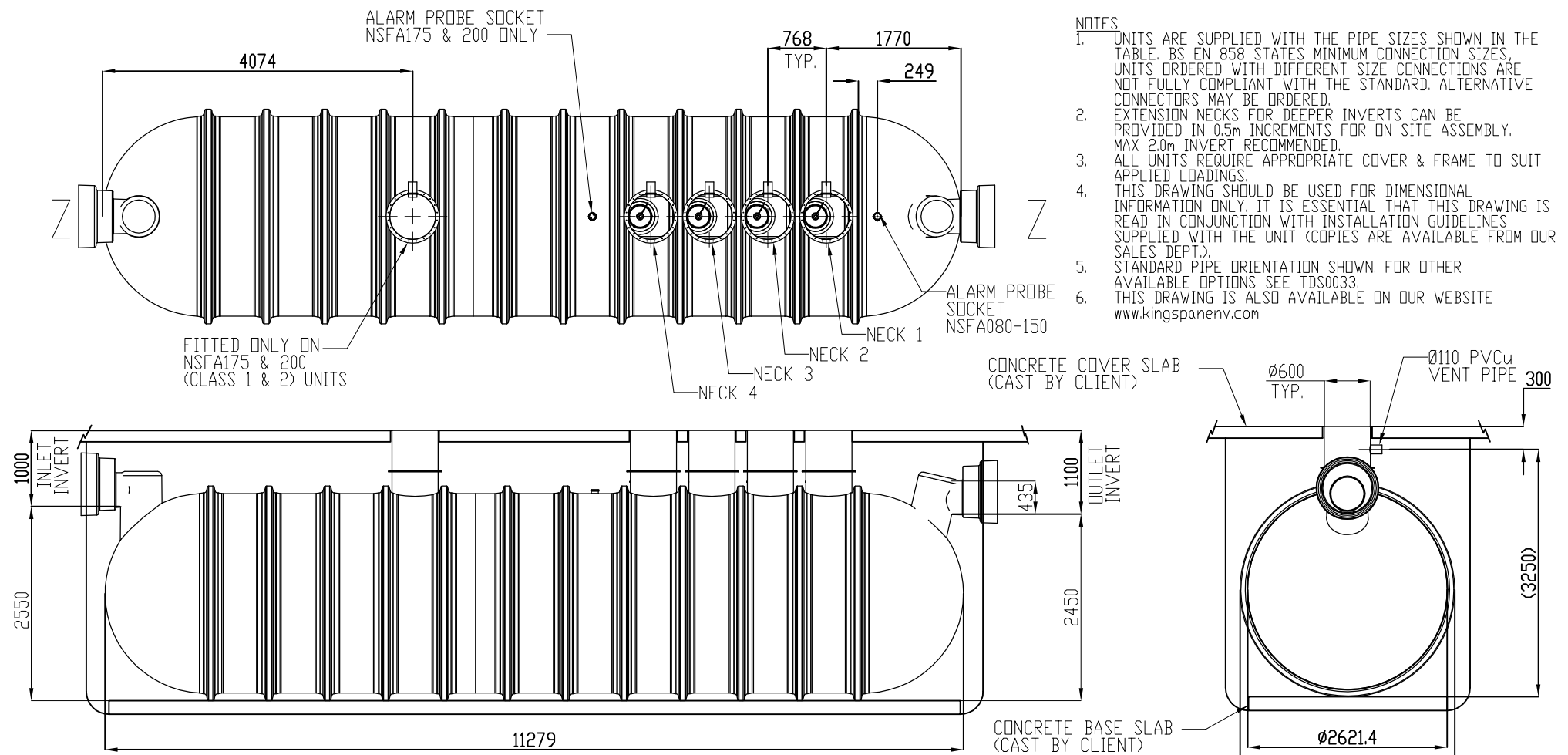


**General Notes :**

- 1.) Do not scale from this drawing.
- 2.) All dimensions are in millimetres.
- 3.) All levels are in metres relative to datum.
- 4.) All dimensions stated are to be confirmed on site prior to commencement of any works and any discrepancies found are to be reported to Steve Morgan Associates Limited immediately.

**TYPICAL SECTION/LAYOUT SHOWN**

EXACT SPECIFICATION TO BE APPROVED BY LOCAL HIGHWAY AUTHORITY & MANUFACTURER PRIOR TO THE COMMENCEMENT OF WORKS AND/OR ORDERING OF MATERIALS.



- NOTES**
1. UNITS ARE SUPPLIED WITH THE PIPE SIZES SHOWN IN THE TABLE. BS EN 858 STATES MINIMUM CONNECTION SIZES, UNITS ORDERED WITH DIFFERENT SIZE CONNECTIONS ARE NOT FULLY COMPLIANT WITH THE STANDARD. ALTERNATIVE CONNECTORS MAY BE ORDERED.
  2. EXTENSION NECKS FOR DEEPER INVERTS CAN BE PROVIDED IN 0.5m INCREMENTS FOR ON SITE ASSEMBLY. MAX 2.0m INVERT RECOMMENDED.
  3. ALL UNITS REQUIRE APPROPRIATE COVER & FRAME TO SUIT APPLIED LOADINGS.
  4. THIS DRAWING SHOULD BE USED FOR DIMENSIONAL INFORMATION ONLY. IT IS ESSENTIAL THAT THIS DRAWING IS READ IN CONJUNCTION WITH INSTALLATION GUIDELINES SUPPLIED WITH THE UNIT (COPIES ARE AVAILABLE FROM OUR SALES DEPT.).
  5. STANDARD PIPE ORIENTATION SHOWN. FOR OTHER AVAILABLE OPTIONS SEE TDS0033.
  6. THIS DRAWING IS ALSO AVAILABLE ON OUR WEBSITE [www.kingspanenv.com](http://www.kingspanenv.com)

UNIT REF.	UNIT CLASS	NOMINAL FLOW RATE (L/s)	APPROX. EMPTY WEIGHT (kg)	'L' OVERALL LENGTH	'A' BASE TO INLET INVERT	'B' OUTLET INVERT	'C' STD. PIPE DIA. (GRP)	NECK 1 FITTED	NECK 2 FITTED	NECK 3 FITTED	NECK 4 FITTED
NSFA080	1 & 2	80	1250	5744	2500	1050	300	P	P		
NSFA100	1 & 2	100	1350	6200	2500	1050	375/400	P	P		
NSFA125	1 & 2	125	1700	7365	2500	1050	450	P	P	P	
NSFA150	1 & 2	150	2000	8675	2550	1100	500/525	P	P	P	
NSFA175	1 & 2	175	2400	9975	2550	1100	500/525	P	P	P	P
NSFA200	1 & 2	200	2700	11280	2550	1100	600	P	P	P	P

Client <b>RIVERSEE LTD</b>	Project Description <b>PROPOSED HIGHWAY DRAINAGE ACCESS ROAD KLARGESTER OIL/PETROL SEPERATOR</b>	REV. By Date	Description	Scales <b>NTS @ A3</b>	Project Number <b>1155090</b>
<b>STEVE MORGAN ASSOCIATES</b> CONSULTING ENGINEERS	9 Clytha Park Road Newport NP20 4PB tel: 01633 266244 e-mail: <a href="mailto:engineers@smalimited.co.uk">engineers@smalimited.co.uk</a> Web: <a href="http://smalimited.co.uk">smalimited.co.uk</a>	Drawn <b>TDJ</b>	Date <b>27/06/16</b>		
		Checked	Date	Drawing Number <b>AR - 510</b>	Rev. <b>--</b>